

Sleep disturbances, academic performance, depressive symptoms and substance use among medical students in Bogota, Colombia

Julián Esteban Barahona-Correa¹

Juan Diego Aristizabal-Mayor¹

Pieralessandro Lasalvia¹

Álvaro J Ruiz^{2,3}

Patricia Hidalgo-Martínez^{3,4}

¹ Pontificia Universidad Javeriana, School of Medicine - Bogota - Cundinamarca - Colombia.

² Pontificia Universidad Javeriana, Department of Clinical Epidemiology and Biostatistics - Bogota - Cundinamarca - Colombia.

³ Pontificia Universidad Javeriana, Department of Internal Medicine, School of Medicine - Bogota - Cundinamarca - Colombia.

⁴ Hospital Universitario San Ignacio, Sleep Medicine Division - Bogota - Cundinamarca - Colombia.

ABSTRACT

Objective: Poor sleep patterns are common in undergraduates and may turn them prone to mood disorders, substance abuse and impaired academic performance. The aim of this study was to assess sleep disturbances among medical students, and whether associations with academic performance, depressive symptoms or substance use were present. **Methods:** Cross-sectional study in which 544 medical students of the Pontificia Universidad Javeriana in Bogota, Colombia were included. Using a computer-based survey, self-reported variables were assessed, including demographics, Pittsburgh Sleep Quality Index (PSQI), Epworth Sleepiness Scale (ESS), Berlin Questionnaire, *Diagnostic and Statistical Manual of Mental Disorders* (DSM) - IV depression criteria, Grade Point Average (GPA), and substance use. Associations between these variables were obtained. **Results:** Fifty-four percent of students were women. Poor sleep quality (PSQI>5) and daytime sleepiness (ESS>10) were found in 65% of the population. A higher GPA was more frequent in students with good sleep quality (OR= 2.6 [1.5-4.5]), lack of daytime sleepiness (OR= 2 [1.3-3.1]) and low risk of Obstructive Sleep Apnea Syndrome (OSAS) (OR= 3.1 [1.6-5.9]). DSM-IV depression criteria were fulfilled by 26% of the students and were associated with poor sleep patterns. Energy drinks use was associated with poor sleep quality. **Discussion:** Poor sleep quality, daytime sleepiness and depressive symptoms are frequent among medical students and are associated with lower academic performance. The identification of students at risk and the implementation of targeted interventions are warranted. Fostering adequate sleep habits and training on sleep medicine may partly counteract these issues.

Keywords: Students, Medical; Sleep; Sleep Disorders; Mood Disorders; Substance-Related Disorders; Latin America.

Corresponding author: Julián E. Barahona-Correa.

E-mail: barahonaj@javeriana.edu.co

Received: April 30, 2018; Accepted: October 29, 2018.

INTRODUCTION

The pivotal role of sleep seems forsaken. An adult should sleep at least 7 hours per night for a good health, although there are short and long-sleepers¹. Sleep disturbances, such as insomnia,² obstructive sleep apnea (OSA)³, and *shift work* disturbances⁴ decrease sleep quality and may generate sleep deprivation, which is ubiquitous among health-care providers. It may be classified as acute continuous or chronic partial (i.e., insufficient recovery sleep)⁵. The former presents dose-dependent deterioration in motor skills, mood and cognitive abilities, equivalent to a blood alcohol concentration of 0.004% rise per hour⁵. The latter generates depressed mood, attention and cognitive impairments, which may be seen after less than 6 hours of sleep per night in less than 2 weeks; it is equivalent to 24 hours of sleep deprivation. Subjects perceive they become adapted to sleep loss, but impairment tends to increase⁵. Given the importance of good sleep in synapse consolidation in the hippocampus and neocortex^{6,7} memory is one of the most affected features in human health, which may diminish academic performance.

Medical students are exposed to poor sleep, due to high work and study loads, overnight shifts, and emotionally challenging duties⁸. Recent evidence suggests they tend to sleep less than 6 hours per night^{9,10}. These factors may reduce academic performance, trigger mental health issues and have a negative impact on the performance of health-care systems⁸. Chang *et al* reported a prevalence of 66% of depressive symptoms and more than 50% of burnout syndrome in medical students¹¹. Dyrbye *et al*.¹² showed this syndrome undermines professional attitudes towards patients, facilitates dishonest behaviors, and diminishes altruistic values regarding physician's responsibility to society. Its relationship with sleep deprivation was shown by Söderström *et al*.¹³

Given the rising importance of sleep disturbances in public health, this subject has been approached in medical students all over the world with staggering results⁸. Sleep problems, such as insomnia and difficulty initiating and maintaining sleep, are frequent in college students¹⁴. Emotional distress has been reported to mediate these alterations¹⁵. For instance, anxiety is associated with a higher frequency of nightmares, and those students reporting a higher frequency tend to rate sleep quality as poorer¹⁶. This combination may lead to an increase risk of psychological and learning problems^{17,18} which may be buffered through psychological interventions that improve sleep¹⁹.

Further, reports in medical students in Saudi Arabia²⁰ and Germany²¹ showed a prevalence of 36% of daytime sleepiness using the Epworth Sleepiness Scale (ESS), and 59% of poor sleep quality using the Pittsburgh Sleep Quality Index (PSQI), respectively. Similar results were described in Estonian²² and Iranian studies²³. However, reports from Latin America

seem worse. Poor sleep quality may reach 88%²⁴ and daytime sleepiness may be as high as 60%^{25,26}.

Equally important, differences in circadian rhythmic expression between individuals promote circadian preferences, known as morningness-eveningness, which further influence students sleep patterns^{27,28}. Evening-type students appear to present a higher risk for depressive mood, suicidal ideations and substance abuse²⁹ although its impact in academic performance is conflicting: a study in the United States reported worse performance in evening-type students²⁷, but a Colombian study did not find differences⁹. Thus, sleep disturbances impact academic performance and mental health, drawing attention to the possible benefits of screening and targeted interventions for medical students with sleep disturbances, as these issues may turn our population prone to substance abuse and mental illnesses⁸. This information will be pivotal for curricula modifications worldwide.

The aim of our study was to determine sleep disturbances using validated questionnaires in a population of medical students in Bogota, Colombia, and its relationship with demographic characteristics, academic performance, depressive symptoms and substance use.

MATERIALS AND METHODS

Study design

Cross-sectional prevalence study in medical students of the School of Medicine at the Pontificia Universidad Javeriana, in Bogota, Colombia, during 2013. We included students with complete academic load, with academic duties within the city (i.e., preclinical lectures or clinical rotations), and who were at University campus when the survey was applied. No sample size was calculated, as the study was developed as a census. We excluded medical students on their last year of education (i.e., eleventh and twelfth semesters), on the basis that the tasks and schedules during this internship year hold more resemblance to those of the practicing physician than to the normal work dynamics of the medical student. All participants (99.9%) were over 16 years old and were considered adults, as they were in a university program. Moreover, sleep disorder questionnaires have been found to be reliable among university students³⁰.

Applied instruments

Sleep quality was determined using PSQI Colombian-validated version³¹ which discriminates between good and bad sleepers. A score of more than 5 define bad sleepers.

Daytime sleepiness was assessed using ESS Colombian-validated version³², which determine the chance of falling asleep in 8 different circumstances. Although it has been considered a useful tool for OSA screening, in a previous study, we did not find a correlation with OSA severity³³. Nevertheless, it is regarded as a significant symptom, which may point out to the existence of an altered sleep pattern.

The Berlin questionnaire (BQ) Colombian-validated version was used³⁴ for the assessment of OSA risk in our population. The survey measures 3 categories: snoring, daytime sleepiness, and obesity and high blood pressure. In our scenario, the last domain was self-reported: students were asked to take their blood pressure and weight one day before the survey as an academic exercise, but no additional information was given. Positive results in two domains detect a high-risk individual. It has been shown useful in patients 15 years old or older³⁵.

Regarding mood disorders, the *Diagnostic and Statistical Manual of Mental Disorders* (DSM) -IV diagnostic criteria were used. These criteria allow a major depression diagnosis when five out of nine criteria are present in the patient, provided depressed mood criterion is present³⁶. Although DSM-V is available since May 2013, we applied its previous version as multiple controversies, particularly regarding false-positive diagnosis with DSM-V were suggested in the literature³⁷. In addition, the study protocol was written and approved before this version was endorsed.

We selected questions concerning the frequency of use of the most often used substances during the last month, according to the “*National Survey on Psychoactive Substance Use in school-age population*”, developed in 2011³⁸, namely: energy drinks, alcohol, tobacco, marijuana, cocaine, stimulants (i.e., methylphenidate – Ritalin, methamphetamine – “Meth”) and tranquilizers (i.e., diazepam, lorazepam, alprazolam, clonazepam, etc). Given the economic-dependence of our target population, we considered that the economic capacity to obtain substances was similar between school-age population and medical students. Regarding alcohol consumption, individual episodes of consumption greater than one drink in the last month and total episodes of binge drinking (i.e., inebriation) in the same period were included.

Colombian grading system ranges from 1.0 to 5.0, the latter being the highest possible. Self-reported cumulative and actual grade point average (GPA) were obtained. We used a quantitative scale with five possible categories: <3.0, 3.0-3.4, 3.5-3.9, 4-4.4, >4.5.

The described tools were condensed in a questionnaire, which was applied to each semester. Students were free to either participate or not in the study. Two researchers (PH and AR) were lecturers during undergraduate studies, but had no responsibilities to grade them. A computer-based survey method was used (TurningPoint v8.0 for Windows). Each student was given a wireless response clicker to answer the questions projected on a screen. As self-reported answers were to be obtained, no personal data were associated to each clicker and, thus, the researchers were unable to identify each student's answer.

A time frame of 10 seconds was given for each question, which was considered sufficient after a pilot application was performed among the authors. Each participant had only one chance to answer the survey. To reassure that individuals were not sampled more than once, the survey was applied prior to the beginning of a lecture that was exclusive for each semester. Participants could not see their fellow students' answers.

Data analysis

The software yielded spreadsheets, which were analyzed using Graphpad Prism 7 for Mac. As variables were mainly categorical, absolute and relative frequencies were calculated. Chi square and Fisher's exact tests were used, as required. *P* values < 0.05 were considered significant. As multiple comparisons were performed, Bonferroni's correction was applied to determine significant findings.

Ethical considerations

The study protocol was reviewed and approved by the Research and Ethics Committee of the Pontificia Universidad Javeriana (FM-CIE-6086-13). The study was classified as a minimal risk research and conducted in agreement with Helsinki declaration, and the Resolution number 008430 of 1993 issued by the Ministry of Health of the Republic of Colombia.

RESULTS

We obtained data from 544 medical students. Table 1 shows the demographic characteristics of the surveyed medical student population. Due to the answering method (anonymous and elective), there were variations in the sub-group populations, as some of the participants were unwilling to answer some of the questions. Based on those missing answers, the number of participants changed from question to question. Fifty percent of the surveyed were between the ages of 19 and 21, and 54% were women. Sixty percent were on the preclinical study phase (i.e., first to fifth semester).

Table 2 shows sleep patterns of the surveyed population. We collected 300 analyzable PQSI scores, where we found a poor sleep quality prevalence of 65.7%.

A higher frequency of poor sleep quality was observed in 19-21 and 22-24 groups, compared with 16-18 group. No difference was observed regarding gender. Poor sleep quality was above 50% in every semester and no difference was observed between them ($p=0.4685$) (Figure 1). Prevalence of daytime sleepiness, measured by ESS ($n=471$), was 65% using a 10 points cut-off. Women showed a significant higher frequency of daytime sleepiness ($p=0.036$). No difference was observed regarding age group. The proportion of students with high risk of OSA, according to the BQ ($n=544$), was 9.9%, which was significantly more frequent in men. No difference was observed regarding age group. Neither work status nor study stage showed significant differences in any scale.

A significantly higher frequency of daytime sleepiness was observed in students with poor sleep quality ($p=0.0002$). However, no difference was obtained concerning high risk of OSA ($p=0.2578$).

Regarding academic performance, 50% of the population reported an overall GPA above 4.0 (Table 1). However, as shown in Figure 2 and Table 3, poor overall academic performance was associated with poor sleep patterns. GPA >4 were more frequent in students with PSQI <5 (67% vs. 43%, $p=0.001$; OR=2.6 [1.5-4.5]), ESS <10 (62% vs 45%, $p=0.002$;

Table 1. General characteristics of total surveyed population and by questionnaire.

Variable [n (%)]	Total (n=544)	PQSI (n=300) *	ESS (n=471) *	BQ (n=544) *	p-value
Age					
<16	5 (1)	4 (1)	5 (1)	5 (1)	0.96
16-18	138 (25)	80 (27)	121 (26)	138 (25)	
19-21	274 (50)	161 (54)	244 (52)	274 (50)	
22-24	103 (19)	48 (16)	85 (18)	103 (19)	
>25	8 (2)	2 (1)	8 (2)	8 (2)	
ND	16 (3)	5 (2)	8 (2)	16 (3)	
Gender					
Male	197 (36)	110 (37)	173 (37)	197 (36)	0.88
Female	296 (54)	170 (57)	259 (55)	296 (54)	
ND	51 (9)	20 (7)	39 (8)	51 (9)	
Currently working					
Yes	15 (3)	10 (3)	10 (2)	15 (3)	0.25
No	513 (94)	287 (96)	455 (97)	513 (94)	
ND	16 (3)	3 (1)	6 (1)	16 (3)	
Study stage					
Preclinical	325 (60)	185 (62)	281 (60)	325 (60)	0.94
Clinical	219 (40)	115 (38)	190 (40)	219 (40)	
Fulfilled DSM-IV Depression Criteria (n=529) *					
Yes	139 (26)	-	-	-	-
No	390 (74)	-	-	-	-
GPA (n=450) *					
<4	227 (50)	-	-	-	-
>4	223 (50)	-	-	-	-

*Available complete questionnaires/answers.

Abbreviations: PSQI Pittsburgh Sleep Quality Index; ESS Epworth Sleepiness Scale; BQ Berlin Questionnaire; ND No data.

Table 2. General characteristics by questionnaire score.

Variable [n (%)]	PSQI (n=300)*			ESS (n=471)*			BQ (n=544)*		
	<5	>5	p-value	<10	>10	p-value	Low risk	High risk	p-value
Age									
<16	3 (75)	1 (25)	0.02	2 (40)	3 (60)	0.69	5 (100)	0 (0)	0.38
16-18	38 (47)	42 (53)		46 (38)	75 (62)		125 (91)	13 (9)	
19-21	48 (30)	113 (70)		86 (35)	158 (65)		251 (92)	23 (8)	
22-24	13 (27)	35 (73)		24 (28)	61 (72)		87 (85)	16 (15)	
>25	-	2 (100)		3 (37)	5 (63)		7 (88)	1 (12)	
ND	1 (20)	4 (80)	4 (50)	4 (50)	15 (94)	1 (6)			
Gender									
Male	42 (38)	68 (62)	0.25	73 (42)	100 (58)	0.036**	167 (85)	30 (15)#	0.028**
Female	52 (31)	118 (69)		75 (29)	184(71)		275 (93)	21 (7)#	
ND	9 (45)	11 (55)		17 (44)	22 (56)		48 (94)	3 (6)	
Currently working									
Yes	2 (20)	8 (80)	0.62	4 (40)	6 (60)	0.94	14 (93)	1 (7)	0.80
No	100 (35)	187 (65)		159 (35)	296 (65)		461 (90)	52 (10)	
ND	1 (33)	2 (67)		2 (33)	4 (67)		15 (94)	1 (6)	
Study stage									
Preclinical	68 (37)	117 (63)	0.26	107 (38)	174 (62)	0.09	297 (91)	28 (9)	0.21
Clinical	35 (30)	80 (70)		58 (30)	132 (70)		193 (88)	26 (12)	

*Available complete questionnaires.

**Significant after Bonferroni's correction.

#After a significant p-value by Chi square test was obtained, Fisher's exact test was performed to determine which subgroups differed significantly.

**Values were calculated on available questionnaires for both variables.

Abbreviations: PSQI Pittsburgh Sleep Quality Index; ESS Epworth Sleepiness Scale; BQ Berlin Questionnaire; ND No data

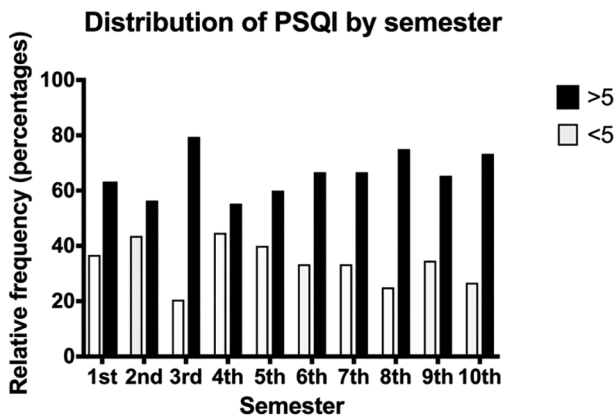


Figure 1. Distribution of PSQI by semester. A score of more than 5 in Pittsburgh Sleep Quality Index (PSQI) define bad sleepers.

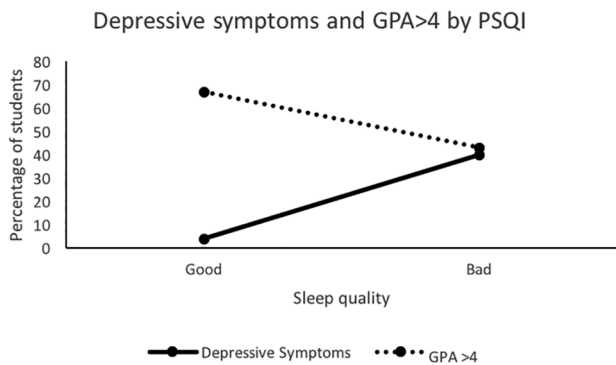


Figure 2. Depressive symptoms and GPA>4 distribution by PSQI. Solid line denotes depressive symptoms. Dotted line denotes GPA >4. Abbreviations: GPA Grade Point Average, PSQI Pittsburgh Sleep Quality Index.

OR=2 [1.3-3.1]), and low risk BQ (52% vs. 26%, $p=0.002$; OR=3.1 [1.6-5.9]).

As shown in Table 1, we found a high frequency of students fulfilling DSM-IV criteria for major depression (26%), with a particularly dramatic share in the poor sleep quality population (PSQI >5) compared with good sleepers (40% vs. 4%, $p<0.0001$) (Figure 2, Table 3). Further, this finding was reproduced in students with daytime sleepiness (ESS>10 32% vs. 16%, $p=0.001$), and high risk of OSA (47% vs. 24%, $p=0.002$).

As disclosed in Figure 3, we conducted an analysis of the prevalence of self-reported psychoactive substance use in the last month. Overall prevalence of alcohol use in at least one occasion was 79%; thirty-two percent of students reported one or more episodes of binge drinking. Energy drink usage was reported by 32% of the surveyed, whereas tobacco use was disclosed by 19% of the population (Table 4).

Students with PSQI >5 reported a more frequent consumption of energy drinks (37% vs. 17%, $p=0.002$). Those with high risk BQ exposed a high usage of energy drinks (47% vs. 30%) and marihuana (21% vs. 9%), although these findings were not significant after correction. Overall prevalence of both alcohol or tobacco use, were not different between groups (Table 5).

DISCUSSION

Poor sleep quality is present in up to two-thirds of medical students and is more frequent in those with daytime sleepiness. Furthermore, it appears to be associated with reduced academic performance, depressive symptoms and substance use.

The proportion of women in our study is in line with the gender distribution in Bogota (56%) according to data (2001-2014) from the Colombian Ministry of Education³⁹. A significant proportion of our population presents poor sleep quality. This finding has been reported worldwide⁸. In our region, Cardoso et al. reported a prevalence close to 14%, in contrast to studies in Peru, which found a prevalence ranging from 60%⁴⁰ to 90%⁴¹. A recent study in Brazil reported altered PSQI scores in up to 70% of medical students⁴². In Colombia, a prevalence as high as 88% has been reported²⁴. Further, our results support the evidence of poor sleep quality in medical students in public and private schools in Colombia. Escobar-Córdoba et al.²⁵ and Machado-Duque et al.⁴³ reported a prevalence of up to 80% of poor sleep quality in public universities in Colombia. Similar results support that medical students' populations in Latin America are akin to each other regarding their demanding curricula. Differences in socioeconomic characteristics between public and private universities seem to be unrelated to poor sleep quality. A relationship between chronic illnesses (i.e., asthma, diabetes, hypertension) and poor sleep quality has been described in medical students⁴⁴, which may be a subject for future research.

Two-thirds of our medical student population present daytime sleepiness that warrants medical intervention (i.e., ESS >10). Previous reports have shown similar results worldwide⁸, although our findings seem slightly higher. A study in Saudi Arabia showed a prevalence of 36%²⁰, similar to the prevalence in Argentina⁴⁵ and Peru⁴⁰. In contrast, higher levels have been reported in Brazil (39% to 50%)^{46,47} and Colombia (up to 60%)^{24-26,43,48}. Daytime sleepiness tends to get worse with each semester, which may induce students to decreased attention and performance, and may be associated with diminished academic results^{46,49}.

One in ten students may present OSA, which reduces quality of sleep and may pose a potential health threat. Data regarding OSA risk in medical students and physicians is scarce; BQ has not been previously applied to these populations. In contrast to our results, Lucero et al.⁴⁵ showed, using SLEEP-50 score, a prevalence of 0.32% in Argentinian medical students. Although a large portion of general population might be at high risk of OSA⁵⁰, a Nigerian study found that knowledge on OSA in medical students warrants improvement, and suggested to formally incorporate the evaluation of sleep disorders in undergraduate curricula⁵¹. This phenomenon has been reported in primary care physicians in Latin America⁵². Our findings support the need for further research on OSA risk in medical students and health-care workers, which may impair professional and academic performance, and pose a potential risk for health⁵⁰.

Poor sleep quality is associated with daytime sleepiness and OSA. Cardoso⁴⁷ previously described a significant relation between daytime sleepiness and poor sleep quality in medical

Table 3. Depressive symptoms and GPA score by questionnaire score.

Variable	PSQI (n=296)*			Epworth (n=464)*			Berlin (n=529)		
	<5	>5	p-value	<10	>10	p-value	Low risk	High risk	p-value
Fulfilled DSM-IV Depression Criteria									
Yes	4 (4)	117 (40)	<0.0001**	26 (16)	98 (32)	0.001**	114 (24)	25 (47)	0.002**
No	97 (96)	78 (60)		135 (84)	205 (68)		362 (76)	28 (53)	
GPA									
<4	29 (33)	94 (57)	0.001**	52 (38)	145 (55)	0.002**	193 (47)	34 (74)	0.002**
>4	59 (67)	72 (43)		86 (62)	119 (45)		211 (52)	12 (26)	
Total Available (%) [†]	254 (86)			402 (87)			450 (85)		

*Available complete questionnaires.

**Significant after Bonferroni's correction.

[†]As some individuals did not answer all the questions, only complete questionnaires with available GPA were included.

Regarding DSM-IV Depression Criteria all data were available.

Abbreviations: GPA Grade point average; PSQI Pittsburgh Sleep Quality Index; ESS Epworth Sleepiness Scale; BQ Berlin Questionnaire; ND No data.

Substance exposure at least once in last month

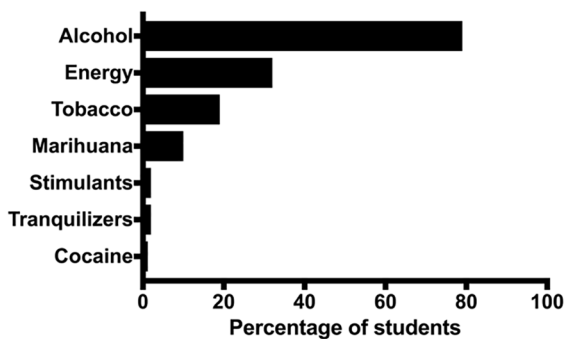


Figure 3. Substance exposure at least once in the last month. Stimulants include methylphenidate - Ritalin, methamphetamine - "Meth". Tranquilizers include diazepam, lorazepam, alprazolam, clonazepam, etc.

students. In addition, a positive trend was found in Nigeria⁴⁴.

Poor sleep quality and daytime sleepiness prevalence is similar in both preclinical and clinical years in our population, which agrees with previous reports^{40,48}. Our findings support the importance of identification of the population at-risk of sleep disturbances in early-years of medicine school and the implementation of targeted interventions.

Our results show that 1 in 4 students presents depressive symptoms, which are associated with poor sleep quality, daytime sleepiness and high risk of OSA. The relationship between mood and anxiety disorders and sleep disturbances is clear⁸. A study at Johns Hopkins School of Medicine found that insomnia posed a greater risk for clinical depression, which may last up to 30 years⁵³. Moreover, Hidalgo & Caumo⁵⁴ reported a higher risk for developing minor psychiatric disorders in Brazilian medical students with sleepiness, insomnia or less than 7 hours per night of sleep, which was further reproduced using a different questionnaire⁵⁵. Loayza et al.⁵⁵ suggested insomnia screening "might be a good tool for the identification of medical students who could benefit from psychiatric assessment and preventive measures". Some researchers have even related subjective poor

sleep quality with an increased risk of suicide⁵⁶. On the other hand, daytime sleepiness was associated with depression and anxiety in an Estonian cohort of medical students⁵⁷ and was found to be related to psychological distress in Malaysia⁵⁸. However, it is known that sleep disturbances may be a comorbidity, a symptom or even a cause of psychiatric disorders⁵⁹. The role of sleep quality in medical students should be addressed with curricula modifications processes to prevent potential mental health issues in future health-care workers.

Some researchers described a significant relation between daytime sleepiness and academic performance^{20,45} as we did using a GPA cutoff point of 4.0. However, evidence is conflicting^{24,25,43,60}. Our results suggest that students with good sleep quality, low daytime sleepiness or low risk of OSA might present a better academic performance. This was described previously by Veldi et al.²², who ascertained poor sleep quality correlated with lower academic achievements, although non-validated questionnaires were used.

Due to chronic sleep deprivation, medical students may be prone to psychotropic substance use. Substance use is frequent among medical students and is significantly associated to living alone, self-reported study difficulty and being a clinical student, whereas self-reported good mental health might be a protective factor⁶¹. Young people may present a higher frequency of alcohol or stimulant agents consumption in order to regulate sleep/wake cycle⁸. This behavior favors the use of stimulant to halt daytime sleepiness, and subsequently promotes the use of sedative agents to revert its effects, phenomenon known as "stimulant-sedation loop"⁶². For instance, a study in Peru found that 20% of medical students had used sleep medications during the last month⁶⁰. Further, frequent use of alcohol was significantly associated to poor sleep quality in Nigeria⁴⁴. Our results highlight a frequent use of alcohol, energy drinks and tobacco. Noteworthy, marihuana use was frequent in students with high risk of OSA. Although energy drinks are not naturally a category of substance abuse as other drugs, they were the most frequently associated with poor sleep patterns; no associations were found with alcohol or tobacco consumption.

Table 4. General characteristics by substance*.

Variable [n (%)]	Tobacco (n=530)	Alcohol (n=509)	Binge drink (n=524)	Energy drinks (n=516)	Marihuana (n=526)	Cocaine (n=524)	Stimulants+ (n=528)	Tranquilizers+ (n=532)
General population	103 (19)	402 (79)	197 (38)	166 (32)	52 (10)	4 (0.8)	12 (2)	11 (2)
Age								
<16	-	4 (1)	2 (40)	3 (2)	1 (2)	-	-	-
16-18	19 (18)	90 (22)	50 (37)	35 (21)	11 (21)	2 (50)	1 (8)	3 (27)
19-21	52 (50)	208 (52)	100 (37)	78 (47)	32 (62)	2 (50)	6 (50)	3 (27)
22-24	27 (26)	84 (21)	40 (42)	46 (28)	7 (14)	-	5 (42)	5 (45)
25 +	3 (3)	6 (2)	2 (25)	2 (1)	-	-	-	-
ND	2 (2)	10 (3)	3 (25)	2 (1)	1 (2)	-	-	-
Gender								
Male	51 (50)	162 (40)	90 (47)	71 (43)	29 (56)	2 (50)	6 (50)	5 (45)
Female	45 (44)	203 (51)	92 (32)	77 (46)	17 (33)	2 (50)	5 (42)	5 (45)
ND	7 (7)	37 (9)	15 (34)	18 (11)	6 (12)	-	1 (8)	1 (9)
Study stage								
Preclinical	56 (54)	232 (58)	118 (38)	88 (53)	34 (65)	3 (75)	6 (50)	6 (54)
Clinical	47 (46)	170 (42)	79 (37)	78 (47)	18 (35)	1 (25)	6 (50)	5 (45)

*Every exposure is measured as at least one episode in the last month. Only available responses were included, which explains the difference in sample sizes for each substance.
 +Stimulants includes Methylphenidate - Ritalin, Methamphetamine - "Meth"; Tranquilizers includes Diazepam, Lorazepam, Alprazolam, Clonazepam, etc.
 Abbreviations: ND No data.

Table 5. Substance use at least once in the last month by questionnaire score*.

Variable	PSQI		p-value	Epworth		p-value	Berlin		p-value
	<5	>5		<10	>10		Low	High	
Tobacco	14 (14)	42 (21)	0.1187	26 (16)	60 (20)	0.3807	88 (18)	15 (28)	0.1052
Alcohol	77 (79)	145 (77)	0.7639	123 (78)	226 (78)	0.9055	357 (78)	45 (86)	0.2079
Binge drink	30 (29)	79 (40)	0.0757	50 (31)	121 (40)	0.0682	176 (37)	21 (40)	0.7662
Energy drinks	18 (17)	72 (37)	0.002**	42 (26)	101 (34)	0.0730	142 (30)	24 (47)	0.0260
Marihuana	6 (6)	21 (11)	0.2046	16 (10)	28 (9)	0.8691	41 (9)	11 (21)	0.0112
Cocaine	-	2 (1)	0.5461	-	2 (1)	0.5432	4 (1)	-	0.9999
Stimulants+	-	6 (3)	0.964	3 (2)	8 (3)	0.7542	10 (2)	2 (4)	0.3344
Tranquilizers+	-	4 (2)	0.3022	3 (2)	6 (2)	0.9999	11 (2)	-	0.6136

*Values were calculated on available questionnaires for both variables.

**Significant after Bonferroni's correction

+Stimulants includes Methylphenidate - Ritalin, Methamphetamine - "Meth"; Tranquilizers includes Diazepam, Lorazepam, Alprazolam, Clonazepam, etc.

Abbreviations: PSQI Pittsburgh Sleep Quality Index; ESS Epworth Sleepiness Scale; BQ Berlin Questionnaire; ND No data.

Despite these alarming findings, our study has some limitations. First, we describe a cross-sectional design that may depict sub-acute disturbances, despite the time frame considered in most of the applied questionnaires (i.e., the last month). Follow-up studies are warranted to determine the impact of bad sleep habits on medical students. Second, although our study was planned as a census, to survey every student in each semester was a challenge. This phenomenon was reflected in the variability of sample within each semester, which may somehow bias results. Nonetheless, the fact that no differences were detected between semesters supports the validity of the findings. Third, some students did not answer all the questions, which yielded a reduction in the number of complete questionnaires available for analysis. Although this probably may bias the results, we show the usefulness of a computer-based method using wireless response clickers for large samples self-reported

assessment. This may facilitate data collection with an adequate reliability. Fourth, we acknowledge the self-application of DSM-IV may limit the external validity of the results. Alternative questionnaires would be more useful and comparable, such as Beck's Depression Inventory-II, which was adapted to DSM-IV and validated in Spanish in college students^{63,64}. Nonetheless, as acknowledged by the current DSM-5, depressive disorders are often accompanied by significant levels of anxiety. Thus, instruments that consider this feature may be more adequate for future research, such as the Patient Health Questionnaire Anxiety and Depression Scale⁶⁵. In any case, we consider our data highlights the high frequency of depression among this population. Fifth, we did not capture relevant information such as that obtained through sleep logs and actigraphy, and neither applied a chronotype questionnaire. For instance, the latter could shed light into whether students with depressive

mood were more frequently evening-type, a feature that should be explored. Further studies to screen and determine risk factors for mood disorders, that may allow targeted interventions, are warranted.

Our results support the fact that sleep disturbances are common among medical students. A higher prevalence, when compared with non-medical students and the general population, has been suggested⁸. It is essential to consider the effects of poor sleep in medical trainees on their physical and mental health, in order to improve their academic performance and quality of life⁸. Furthermore, the quality of health care delivery will improve and society overall could benefit.

CONCLUSION

Poor sleep quality and daytime sleepiness are common in our medical student population, and are associated with a diminished academic performance, depressive symptoms and substance abuse. Students with high risk of OSA are more common than expected. Noteworthy, a significant portion of students present mood disorders, which warrant medical intervention. As previously suggested⁸, more research and initiatives towards the improvement of sleep quality and knowledge, the identification of students at risk, and the development of targeted programs are urgently needed. Strategies to guarantee healthcare professionals safety and performance in developing countries are pivotal to support the quality of healthcare delivery.

Acknowledgements

We thank the students who participated in this study and the School of Medicine at the Pontificia Universidad Javeriana for their trust, collaboration and support.

REFERENCES

- Consensus Conference Panel; Watson NF, Badr MS, Belenky G, Bliwise DL, Buxton OM, Buysse D, et al. Recommended Amount of Sleep for a Healthy Adult: A Joint Consensus Statement of the American Academy of Sleep Medicine and Sleep Research Society. *J Clin Sleep Med*. 2015;11(6):591-2.
- Ohayon MM, Smirne S. Prevalence and consequences of insomnia disorders in the general population of Italy. *Sleep Med*. 2002;3(2):115-20.
- Lee W, Nagubadi S, Kryger MH, Mokhlesi B. Epidemiology of Obstructive Sleep Apnea: a Population-based Perspective. *Expert Rev Respir Med*. 2008;2(3):349-64.
- Ohayon MM. Epidemiology of insomnia: what we know and what we still need to learn. *Sleep Med Rev*. 2002;6(2):97-111.
- Olson EJ, Drage LA, Auger RR. Sleep deprivation, physician performance, and patient safety. *Chest*. 2009;136(5):1389-96.
- Diekelmann S, Born J. The memory function of sleep. *Nat Rev Neurosci*. 2010;11(2):114-26.
- Walker MP. The role of sleep in cognition and emotion. *Ann N Y Acad Sci*. 2009;1156:168-97.
- Azad MC, Fraser K, Rumana N, Abdullah AF, Shahana N, Hanly PJ, et al. Sleep disturbances among medical students: a global perspective. *J Clin Sleep Med*. 2015;11(1):69-74.
- Pérez-Olmos I, Talero-Gutiérrez C, González-Reyes R, Moreno CB. Ritmos circadianos de sueño y rendimiento académico en estudiantes de medicina. *Rev Cienc Salud*. 2006;4(2):147-57.
- Sitticharoon C, Srisuma S, Kanavitoon S, Summachiwakij S. Exploratory study of factors related to educational scores of first preclinical year medical students. *Adv Physiol Educ*. 2014;38(1):25-33.
- Chang E, Eddins-Folensbee F, Coverdale J. Survey of the prevalence of burnout, stress, depression, and the use of supports by medical students at one school. *Acad Psychiatry*. 2012;36(3):177-82.
- Dyrbye LN, Massie FS Jr, Eacker A, Harper W, Power D, Durning SJ, et al. Relationship between burnout and professional conduct and attitudes among US medical students. *JAMA*. 2010;304(11):1173-80.
- Söderström M, Jeding K, Ekstedt M, Perski A, Akerstedt T. Insufficient sleep predicts clinical burnout. *J Occup Health Psychol*. 2012;17(2):175-83.
- Schlarb AA, Kulesa D, Gulewitsch MD. Sleep characteristics, sleep problems, and associations of self-efficacy among German university students. *Nat Sci Sleep*. 2012;4:1-7.
- Hayley AC, Downey LA, Stough C, Sivertsen B, Knapstad M, Øverland S. Social and emotional loneliness and self-reported difficulty initiating and maintaining sleep (DIMS) in a sample of Norwegian university students. *Scand J Psychol*. 2017;58(1):91-9.
- Schredl M. Effects of state and trait factors on nightmare frequency. *Eur Arch Psychiatry Clin Neurosci*. 2003;253(5):241-7.
- Engle-Friedman M, Riela S, Golan R, Ventuneac AM, Davis CM, Jefferson AD, et al. The effect of sleep loss on next day effort. *J Sleep Res*. 2003;12(2):113-24.
- Gaultney JF. The prevalence of sleep disorders in college students: impact on academic performance. *J Am Coll Health*. 2010;59(2):91-7.
- Friedrich A, Schlarb AA. Let's talk about sleep: a systematic review of psychological interventions to improve sleep in college students. *J Sleep Res*. 2018;27(1):4-22.
- Abdulghani HM, Alrowais NA, Bin-Saad NS, Al-Subaie NM, Haji AMA, Alhaqwi AI. Sleep disorder among medical students: relationship to their academic performance. *Med Teach*. 2012;34 Suppl 1:S37-41.
- Ahrberg K, Dresler M, Niedermaier S, Steiger A, Genzel L. The interaction between sleep quality and academic performance. *J Psychiatr Res*. 2012;46(12):1618-22.
- Veldi M, Aluoja A, Vasar V. Sleep quality and more common sleep-related problems in medical students. *Sleep Med*. 2005;6(3):269-75.
- Nojomi M, Ghalhe Bandi MF, Kaffashi S. Sleep pattern in medical students and residents. *Arch Iran Med*. 2009;12(6):542-9.
- Monterrosa Castro A, Ulloque Caamaño L, Carriazo Julio S. Calidad del dormir, insomnio y rendimiento académico en estudiantes de medicina. *Duazary*. 2014;11(2):85-97.
- Escobar-Córdoba F, Benavides-Gélvez RE, Montenegro-Duarte HG, Eslava-Schmalbach JH. Somnolencia diurna excesiva en estudiantes de noveno semestre de la Universidad Nacional de Colombia. *Rev Fac Med*. 2011;59(3):191-200.
- Escobar-Córdoba F, Cortés-Rueda MF, Canal-Ortiz JS, Colmenares-Becerra LA, Becerra-Ramírez HA, Caro-Rodríguez CC. Somnolencia diurna excesiva en estudiantes de tercer semestre de medicina de la Universidad Nacional de Colombia. *Rev Fac Med*. 2008;56(3):235-44.
- Taylor DJ, Clay KC, Bramoweth AD, Sethi K, Roane BM. Circadian phase preference in college students: relationships with psychological functioning and academics. *Chronobiol Int*. 2011;28(6):541-7.
- Adan A, Archer SN, Hidalgo MP, Di Milia L, Natale V, Randler C. Circadian typology: a comprehensive review. *Chronobiol Int*. 2012;29(9):1153-75.
- Bakotic M, Radosevic-Vidacek B, Koscec Bjelajac A. Morningness-eveningness and daytime functioning in university students: the mediating role of sleep characteristics. *J Sleep Res*. 2017;26(2):210-8.
- Migacz E, Wichniak A, Kukwa W. Are questionnaires reliable in diagnosing sleep-disordered breathing in university students? *J Laryngol Otol*. 2017;131(11):965-71.
- Escobar-Córdoba F, Eslava-Schmalbach J. Colombian validation of the Pittsburgh Sleep Quality Index. *Rev Neurol*. 2005;40(3):150-5.
- Chica-Urzola HL, Escobar-Córdoba F, Eslava-Schmalbach J. Validating the Epworth sleepiness scale. *Rev Salud Publica (Bogota)*. 2007;9(4):558-67.
- Ruiz-Morales A, Hidalgo-Martinez P, Páez S, Perilla AM, González CA. Correlation of the Epworth somnolence scale with the diagnosis and severity of the obstructive sleep apnea-hypopnea syndrome (OSAHS). *Rev Colomb Neumol*. 2013;25(1):10-5.
- Polanía-Dussan IG, Escobar-Córdoba F, Eslava-Schmalbach J, Netzer NC. Validación colombiana del cuestionario Berlín. *Rev Fac Med*. 2013;61(3):231-8.
- Netzer NC, Hoegel JJ, Loubé D, Netzer CM, Hay B, Alvarez-Sala R, et al. Prevalence of symptoms and risk of sleep apnea in primary care. *Chest*. 2003;124(4):1406-14.
- Zimmerman M, McGlinchey JB, Young D, Chelminski I. Diagnosing major depressive disorder: II: is there justification for compound symptom criteria? *J Nerv Ment Dis*. 2006;194(4):235-40.
- Wakefield JC. DSM-5: proposed changes to depressive disorders. *Curr Med Res Opin*. 2012;28(3):335-43.

38. Gobierno Nacional de la República de Colombia. Estudio nacional de consumo de sustancias psicoactivas en población escolar - Informe final [Internet]; 2011 [cited 2018 Jul 20]. Available from: https://www.unodc.org/documents/colombia/Documentostecnicos/Estudio_Consumo_Escolares.pdf
39. Ministerio de Educación de Colombia. Graduados - Observatorio laboral para la educación [Internet]. [cited 2018 Jul 20]. Available from: <http://bi.mineducacion.gov.co:8380/eportal/web/men-observatorio-laboral/ubicacion-geografica>
40. Rosales E, Egoavil M, Cruz CL, Castro JR. Somnolencia y calidad del sueño en estudiantes de medicina de una universidad peruana. *An Fac Med Lima*. 2007;68(2):150-8.
41. Del Pielago Meoño AF, Failoc Rojas VE, Plasencia Dueñas EA, Díaz Vélez C. Calidad de sueño y estilo de aprendizaje en estudiantes de Medicina Humana de la Universidad Nacional Pedro Ruiz Gallo. *Acta Méd Peruana*. 2013;30(4):63-8.
42. Corrêa CC, Oliveira FK, Pizzamiglio DS, Ortolan EVP, Weber SAT. Sleep quality in medical students : a comparison across the various phases of the medical course. *J Bras Pneumol*. 2017;43(4):285-9.
43. Machado-Duque ME, Echeverri Chabur JE, Machado-Alba JE. Excessive Daytime Sleepiness, Poor Quality Sleep, and Low Academic Performance in Medical Students. *Rev Colomb Psiquiatr*. 2015;44(3):137-42.
44. James BO, Omoaregba JO, Igbese OO. Prevalence and correlates of poor sleep quality among medical students at a Nigerian university. *Ann Niger Med*. 2011;5(1):1-5.
45. Lucero C, Buonanotte CF, Perrote FM, Concarì IA, Quevedo P, Passaglia G, et al. Trastornos del sueño-vigilia en alumnos de 5.º año de Medicina de la Universidad Nacional de Córdoba y su impacto sobre el rendimiento académico. *Neurol Argentina*. 2014;6(4):184-92.
46. Rodrigues RN, Viegas CA, Abreu E Silva AA, Tavares P. Daytime sleepiness and academic performance in medical students. *Arq Neuropsiquiatr*. 2002;60(1):6-11.
47. Cardoso HC, Bueno FCC, Mata JC, Alves APR, Jochims I, Vaz Filho IHR, et al. Avaliação da qualidade do sono em estudantes de Medicina. *Rev Bras Educ Med*. 2009;33(3):349-55.
48. Ulloque-Caamaño L, Monterrosa-Castro A, Carriazo-Julio S. Somnolencia diurna y rendimiento académico de estudiantes de medicina de una universidad pública Colombiana. *Rev Cienc Biom*. 2013;4(1):31-41.
49. Pérez-Olmos I, Ibáñez-Pinilla M. Night shifts, sleep deprivation, and attention performance in medical students. *Int J Med Educ*. 2014;5:56-62.
50. Ruiz-Morales A, Hidalgo Martínez P, Sanchez Mejía SI, Perea Bello AH, Segura Salguero JC, Chavarriaga Soto J, et al. Síndrome de apnea-hipopnea obstructiva del sueño (SAHOS) y su relación con complicaciones perioperatorias: revisión de la literatura. *Univ Med (Colombia)*. 2014;55(4):407-23.
51. Ozoh OB, Iwuala SO, Desalu OO, Ojo OO, Okubadejo NU. An Assessment of the Knowledge and Attitudes of Graduating Medical Students in Lagos, Nigeria, Regarding Obstructive Sleep Apnea. *Ann Am Thorac Soc*. 2015;12(9):1358-63.
52. Cherrez Ojeda I, Jaffe DB, Guerrero T, Mantilla R, Santoro I, Gabino G, et al. Attitudes and knowledge about obstructive sleep apnea among Latin American primary care physicians. *Sleep Med*. 2013;14(10):973-7.
53. Chang PP, Ford DE, Mead LA, Cooper-Patrick L, Klag MJ. Insomnia in young men and subsequent depression. The Johns Hopkins Precursors Study. *Am J Epidemiol*. 1997;146(2):105-14.
54. Hidalgo MP, Caumo W. Sleep disturbances associated with minor psychiatric disorders in medical students. *Neurol Sci*. 2002;23(1):35-9.
55. Loayza HMP, Ponte TS, Carvalho CG, Pedrotti MR, Nunes PV, Souza CM, et al. Association between mental health screening by self-report questionnaire and insomnia in medical students. *Arq Neuropsiquiatr*. 2001;59(2-A):180-5.
56. Bernert RA, Turvey CL, Conwell Y, Joiner TE Jr. Association of poor subjective sleep quality with risk for death by suicide during a 10-year period: a longitudinal, population-based study of late life. *JAMA Psychiatry*. 2014;71(10):1129-37.
57. Eller T, Aluoja A, Vasar V, Veldi M. Symptoms of anxiety and depression in Estonian medical students with sleep problems. *Depress Anxiety*. 2006;23(4):250-6.
58. Zailinawati AH, Teng CL, Chung YC, Teow TL, Lee PN, Jagmohani KS. Daytime sleepiness and sleep quality among Malaysian medical students. *Med J Malaysia*. 2009;64(2):108-10.
59. Ford DE, Kamerow DB. Epidemiologic study of sleep disturbances and psychiatric disorders. An opportunity for prevention? *JAMA*. 1989;262(11):1479-84.
60. Sáez GJ, Santos RG, Salazar CK, Carhuancho-Aguilar J. Calidad del sueño relacionada con el rendimiento académico de estudiantes de medicina humana. *Horiz Med (Barcelona)*. 2013;13(3):25-32.
61. Makanjuola AB, Daramola TO, Obembe AO. Psychoactive substance use among medical students in a Nigerian university. *World Psychiatry*. 2007;6(2):112-4.
62. Lund HG, Reider BD, Whiting AB, Prichard JR. Sleep patterns and predictors of disturbed sleep in a large population of college students. *J Adolesc Health*. 2010;46(2):124-32.
63. Estrada Aranda BD, Delgado Álvarez C, Landero Hernández R, González Ramírez MT. Propiedades psicométricas del modelo bifactorial del BDI-II (versión española) en muestras mexicanas de población general y estudiantes universitarios. *Univ Psychol*. 2015;14(1):125-36.
64. Beck AT, Steer RA, Ball R, Ranieri W. Comparison of Beck Depression Inventories -IA and -II in psychiatric outpatients. *J Pers Assess*. 1996;67(3):588-97.
65. Kroenke K, Wu J, Yu Z, Bair MJ, Kean J, Stump T, et al. Patient Health Questionnaire Anxiety and Depression Scale: Initial Validation in Three Clinical Trials. *Psychosom Med*. 2008;70(6):716-27.