

## The “Negative” Impact of a Subgaleal Drain: Post-cranioplasty Negative Pressure Subgaleal Drain-induced Ascending Transtentorial Herniation

### Abstract

One commonly practiced procedural step to reduce the risk of postoperative hematoma accumulation when performing cranioplasties is to place a closed negative-pressure subgaleal drain. We present a patient with sinking skin flap syndrome that underwent such a procedure and subsequently experienced immediate postoperative ascending transtentorial herniation and intracranial hemorrhage remote from the surgical site. On determining that the subgaleal drain was the responsible cause, it was immediately removed, and the patient had neurological recovery. Fewer than 30 cases of life-threatening subgaleal drain-related complications have been documented, and this is the first reported case of ascending herniation occurring after cranioplasty. This report illustrates the potential risks of subgaleal drainage, the importance of early recognition of this rare phenomenon and that intervention can be potentially life-saving.

**Keywords:** *Ascending transtentorial herniation, cranioplasty, subgaleal drainage*

### Introduction

Cranioplasties are regularly performed neurosurgical procedures that can be associated with a variety of complications such as bone flap infection, seizures, and surgical site hematoma in almost a third of patients.<sup>[1]</sup> However, most complications are readily amenable to treatment and seldom fatal. One commonly practiced procedural step to reduce the risk of postoperative hematoma accumulation is to place a closed negative-pressure subgaleal drain. We present a patient with sinking skin flap syndrome (SSFS) that underwent a cranioplasty and subgaleal drainage. She subsequently experienced immediate postoperative ascending transtentorial herniation (ATH). Fewer than 30 cases of life-threatening subgaleal drain-related complications have been documented. This case illustrates the importance of early recognition of this rare phenomenon and intervention can be potentially life-saving.

### Case Report

A 58-year-old female with a history of chronic rheumatic heart disease and atrial fibrillation was admitted for cranioplasty. She previously underwent a decompressive craniectomy for the management of her

massive right middle and anterior cerebral artery infarction 6 months before. The ischemic stroke rendered the patient severely disabled with left hemiplegia and hemisensory loss. The patient also experienced chronic headache and nonspecific dull aching pain over the left side of the body that required gabapentin for partial relief. There was a large right fronto-parietal-temporal scalp concavity coinciding with a craniectomy skull defect of 25 cm × 20 cm [Figure 1a-c].

Cranioplasty using the patient’s autologous bone flap was performed uneventfully and there was no intraoperative breach of the dura. Blood loss was 150 ml and the operation lasted for 100 minutes. During scalp wound closure, a single subgaleal suction drain was placed with vacuum applied as a routine measure. The drain was a negative pressure closed system with an inner diameter of 3.33 mm (Fr 10) and according to the manufacturer supplied medical device specifications, exerted a negative pressure 75 mmHg (10kPa). Within 1 hour after extubation the patient developed status epilepticus with bilateral eye deviation to the left. Pupil size was 3 mm bilaterally and reactive to light. There was fast atrial fibrillation (160 beats/min) and hypotension of 85/40 mmHg. At that

**Peter Y. M. Woo,  
Wilson H. Y. Lo,  
Hoi-Tung Wong,  
Kwong-Yau Chan**

*Department of Neurosurgery,  
Kwong Wah Hospital,  
Yau Ma Tei, Hong Kong*

**Address for correspondence:**  
Dr. Peter Y. M. Woo,  
Department of Neurosurgery,  
Kwong Wah Hospital,  
Room 1101, Main Building,  
25 Waterloo Road, Hong Kong.  
E-mail: [wym307@ha.org.hk](mailto:wym307@ha.org.hk)

#### Access this article online

**Website:** [www.asianjns.org](http://www.asianjns.org)

**DOI:** 10.4103/ajns.AJNS\_285\_17

#### Quick Response Code:



**How to cite this article:** Woo PY, Lo WH, Wong HT, Chan KY. The “negative” impact of a subgaleal drain: Post-cranioplasty negative pressure subgaleal drain-induced ascending transtentorial herniation. *Asian J Neurosurg* 2019;14:256-61.

This is an open access journal, and articles are distributed under the terms of the Creative Commons Attribution-NonCommercial-ShareAlike 4.0 License, which allows others to remix, tweak, and build upon the work non-commercially, as long as appropriate credit is given and the new creations are licensed under the identical terms.

**For reprints contact:** [reprints@medknow.com](mailto:reprints@medknow.com)

junction, the subgaleal drain output was <20 ml. The patient was mechanically ventilated and her seizures were controlled after administering intravenous midazolam and phenytoin. A computed tomography (CT) brain scan showed an interhemispheric acute subdural hematoma, intraventricular hemorrhage within the left occipital horn of the lateral ventricle with obliteration of the quadrigeminal and superior cerebellar cisterns. There was also upward displacement of the vermis at the level of the incisura and flattening of the posterior third ventricle [Figure 1d-f]. The patient was diagnosed with ATH and the subgaleal drain was immediately removed. She was sedated for 24 hours and a CT brain performed the next day showed resolution of the ATH [Figure 1g, h]. The patient eventually recovered to her preoperative functional performance level with no further headaches and resolution of her limb numbness. There were no seizures and her phenytoin was weaned off a month after the cranioplasty.

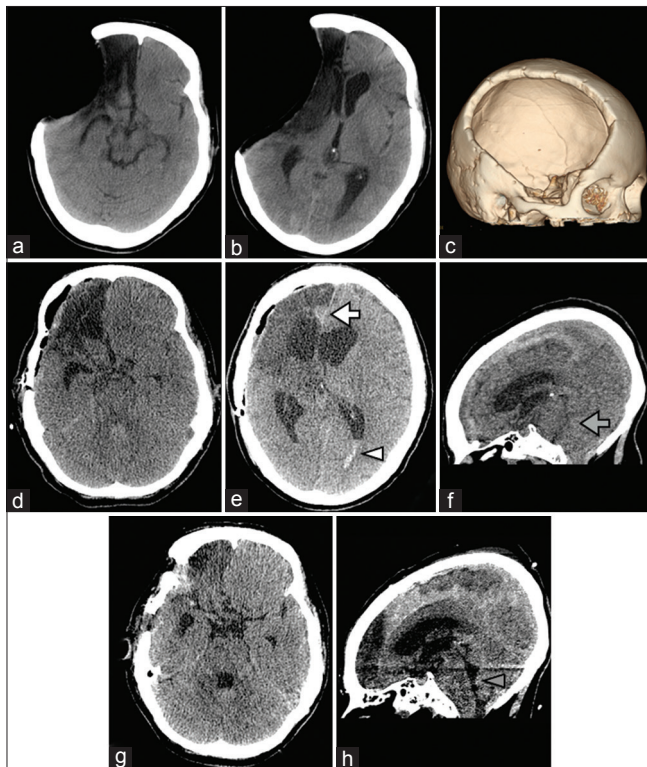
## Discussion

The term “SSFS” was first introduced in 1977 by Yamaura and is synonymous with the “syndrome of the trephined” that exclusively affects craniectomy patients.<sup>[2]</sup> The clinical presentation is protean ranging from chronic fatigue,

headache, and dizziness to more disabling symptoms such as cognitive decline, seizures, visual disturbances, speech, and sensorimotor deficits.<sup>[3]</sup> The exact incidence is unknown, but from a prospective cohort study of patients with malignant middle cerebral artery syndrome who underwent hemispherectomy 26% experienced SSFS 5 months after the procedure.<sup>[4]</sup> There are no diagnostic criteria, but a characteristic feature of SSFS is the reversibility of symptoms after cranioplasty and this has led to greater understanding of its possible pathophysiology.<sup>[5]</sup> The syndrome is believed to develop when atmospheric pressure exceeds intracranial pressure and in extreme cases can manifest as paradoxical herniation. The paradox lying in the fact that herniation occurs in the absence of intracranial hypertension. The consequences of atmospheric pressure exertion on a large craniectomy site can be far reaching. Not only is there direct brain compression but also a global disruption of cerebrospinal fluid (CSF) hydrodynamics with regional reductions in microarterial and venous outflow circulation.<sup>[3]</sup> Cranioplasty has been shown to elicit significant improvements in cerebral perfusion by xenon-133 CT; glucose metabolism by fluorodeoxyglucose-18 positron emission tomography; and systolic craniocaudal CSF flow velocities by dynamic phase-contrast magnetic resonance imaging.<sup>[4-6]</sup> In spite of the benefits of cranioplasty, there have been sporadic reports of postoperative hemorrhagic stroke or diffuse cerebral edema (DCE or pseudohypoxic edema) attributed to the rapid increase in cerebral blood flow following reexpansion of fragile damaged brain tissue with impaired vascular autoregulation.<sup>[7-10]</sup> We suspect that the additional application of negative pressure drainage in our patient may have aggravated luxury hyperperfusion injury as exemplified by the presence of subdural and intraventricular hemorrhage.

From the year 2000–2017, 25 patients, including the present case, have been reported to develop severe cardiovascular changes, DCE, or intracranial hemorrhage attributable to negative-pressure drainage [Table 1]. Most patients had preceding SSFS and experienced drain-related complications after cranioplasty regardless of the presence of a CSF shunt. Two developed severe intracerebral hemorrhage secondary to tearing of the superior sagittal sinus and even intracranial aneurysm rupture after an otherwise uneventful craniotomy.<sup>[12,15]</sup> An overwhelming majority of these cases were fatal and neurological deterioration usually occurred within 3 hours after the operation.

Ever since Georges Dieulafoy’s 1873 seminal treatise on the merits of “pneumatic aspiration” in the management of wounds, the placement of drains has dominated surgical practice.<sup>[26]</sup> In his treatise, Dieulafoy cautioned that “the operator must be condemned who makes use of aspiration without understanding.”<sup>[26,27]</sup> The induction of acute intracranial hypotension by subgaleal drains



**Figure 1:** Preoperative computed tomography scan revealing a large sunken craniectomy site with paradoxical herniation (a, b axial; c three-dimensional reconstruction). Immediate postcranioplasty scan showing interhemispheric acute subdural hematoma (white arrow), intraventricular hemorrhage (white arrowhead) and ascending transtentorial herniation with upward displacement of the cerebellar vermis (grey arrow) (d, e, axial; f midsagittal). One-day postoperative scan after subgaleal drain removal showing spontaneous resolution of transtentorial herniation (g, axial; h, midsagittal)

**Table 1: Characteristics of patients with postcranioplasty/craniotomy negative-suction subgaleal drainage-related complications**

Author, year	Patient age (years)/sex	Primary etiology	Procedure	CSF shunt (yes/no)	Interval duration to cranioplasty	Sinking scalp flap (yes/no)	Postprocedure time duration to deterioration	Postoperative presentation	Radiological findings	Outcome
Van Roost <i>et al.</i> <sup>[11]</sup>	32/male	TBI	Cranioplasty	Yes	NS	NS	NS	Coma; bilateral fixed and dilated pupils	NS	Death
Mohindra <i>et al.</i> <sup>[12]</sup>	13 months/male	Traumatic leptomeningeal cyst	Craniotomy and dural repair	No	-	-	Immediate	Fresh blood in drain; cardiac arrest	Autopsy: Torn SSS	Death
Toshniwal <i>et al.</i> <sup>[13]</sup>	45/female	Intracranial aneurysm	Craniotomy for clipping	No	-	-	Immediate	Bradycardia	-	No new deficit
Karamchandani <i>et al.</i> , 2006 <sup>[14]</sup>	65/female	Intracranial aneurysm	Craniotomy for clipping	No	-	-	Immediate	Bradycardia; hypotension	-	No new deficit
Prabhakar <i>et al.</i> , <sup>[15]</sup>	45/male	Intracranial aneurysm	Craniotomy for clipping	No	-	-	Immediate	Fresh blood in drain	Surgical exploration: rupture of incompletely clipped aneurysm	Death
Honeybul <sup>[16]</sup>	22/male	TBI	Cranioplasty	No	3 months	Yes	NS	Coma; bilateral dilated pupils; hypertension; tachycardia; seizure	DCE	Death
	16/male	TBI	Cranioplasty	Yes	2 months	Yes	3 h	Coma; bilateral dilated pupils; hypertension	DCE	Death
	16/male	TBI	Cranioplasty	Yes	2.5 months	Yes	1 h	Coma; bilateral dilated pupils; hypertension	DCE	Death
Roth <i>et al.</i> <sup>[17]</sup>	3.5/male	Choroid plexus carcinoma	Cranioplasty	No	NS	No	Immediate	Bradycardia; hypotension	EDH	No new deficit
Zebian and Critchley <sup>[18]</sup>	40/female	Ischemic stroke	Cranioplasty	Yes	24 months	Yes	NS	Coma; bilateral dilated pupils; seizure	DCE; ICH	Death
Bhagat <i>et al.</i> <sup>[19]</sup>	60/male	Intracranial aneurysm	Craniotomy for clipping	No	-	-	Immediate	Asystole	-	NS
Yadav <i>et al.</i> <sup>[20]</sup>	1/male	Arachnoid cyst	Craniotomy for excision	No	-	-	Immediate	Asystole	IVH	Death
Broughton <i>et al.</i> <sup>[21]</sup>	NS	NS	Cranioplasty	No	NS	Yes	NS	Coma; bilateral dilated pupils; tachycardia	DCE	Death
Lee <i>et al.</i> <sup>[10]</sup>	50/female	Aneurysmal SAH	Cranioplasty	NS	2 months	Yes	Autologous	Seizure	DCE	NS

*Contd...*

Table 1: Contd...

Author, year	Patient age (years)/sex	Primary etiology	Procedure	CSF shunt (yes/no)	Interval duration to cranioplasty	Sinking scalp flap (yes/no)	Postprocedure time duration to deterioration	Postoperative presentation	Radiological findings	Outcome
Sviril <sup>[22]</sup>	22/male	TBI	Cranioplasty	No	9 months	NS	Autologous	Coma; bilateral dilated pupils	DCE	Death
	14/male	TBI	Cranioplasty	Yes	10 months	Yes	Autologous	Coma; bilateral dilated pupils	DCE	Death
	28/male	TBI	Cranioplasty	Yes	17 months	Yes	Methylmethacrylate	Coma; bilateral dilated pupils	DCE; ICH	Death
	24/male	TBI	Cranioplasty	No	3 months	Yes	Autologous	Coma; bilateral dilated pupils	DCE	Death
Honeybul <i>et al.</i> <sup>[23]</sup>	25/female	Ischemic stroke	Cranioplasty	No	11 months	Yes	Titanium	Coma; bilateral dilated pupils	DCE	Death
	74/female	Ischemic stroke	Cranioplasty	No	2 months	Yes	Autologous	Seizure	DCE; ICH	Death
	41/female	Hemorrhagic stroke	Cranioplasty	No	12 months	NS	Titanium	Seizure	DCE	Death
Moon <i>et al.</i> , 2016 <sup>[9]</sup>	22/male	TBI	Cranioplasty	Yes	4 months	Yes	NS	Coma	DCE	Disability
Kaneshiro <i>et al.</i> <sup>[24]</sup>	64/male	Hemorrhagic stroke	Cranioplasty	No	1 month	Yes	Titanium	Coma; bilateral dilated pupils	DCE	Death
Shen <i>et al.</i> <sup>[25]</sup>	51/male	TBI	Cranioplasty	No	6 months	Yes	Autologous	Coma; bilateral dilated pupils; seizure	DCE; ICH	Death
Current	58/female	Ischemic stroke	Cranioplasty	No	6 months	Yes	Autologous	Seizure	DCE, ATH, IVH, SDH	Disability

CSF – Cerebrospinal fluid; TBI – Traumatic brain injury; SAH – Subarachnoid hemorrhage; SSS – Superior sagittal sinus; NS – Not specified; PEEK – Polyether ether ketone; DCE – Diffuse cerebral edema; ICH – Intracerebral hemorrhage; IVH – Intraventricular hemorrhage; SDH – Subdural hematoma; ATH – Ascending transtentorial herniation



can result in catastrophic outcomes.<sup>[11-25,28,32]</sup> Our patient likely experienced ATH when vacuum suction to the supratentorial compartment was applied. The immediate clamping of the subgaleal drain with subsequent recovery of the patient's consciousness and stabilization of vital signs supports this theory. ATH, also known as reverse or upward coning, is the least frequently encountered of brain herniation syndromes. It is generally triggered by the abrupt supratentorial decompression of obstructive hydrocephalus secondary to cerebellar mass lesions in 65% of cases.<sup>[29]</sup> The precipitous plunge of supratentorial compartment pressure establishes a steep gradient that displaces the anterior lobe and vermis of the cerebellum superiorly through the tentorial incisura. Subsequent brainstem compression and compaction of the basal veins could cause life-threatening hemorrhagic venous infarction. Early signs of ATH include somnolence, cardiovascular collapse, arrhythmias (either bradycardia, atrial, or ventricular fibrillation), and pinpoint pupils.<sup>[2,3]</sup> A high-index of suspicion is required for this uncommon phenomenon and is potentially reversible if recognized early. This is the first documented case of ATH occurring after cranioplasty, but it is believed that previous cases of severe bradycardia and arterial hypotension encountered during subgaleal drain placement may have been due to the rostral shift of trigeminal or vagal brainstem nuclei.<sup>[13,14,17,19,32]</sup>

To demonstrate the degree of intracranial compartment pressure changes created, researchers have noted that intracranial pressure in the contralateral hemisphere can drop expeditiously to -20 mmHg at the moment of drain vacuum suction.<sup>[11]</sup> Furthermore, an experimental study of three commonly used closed drainage systems discovered that significantly high negative pressures, in excess of -150 mmHg and beyond physiological intra-arterial pressure, could be generated.<sup>[27]</sup> In contrast, there is little evidence to support the prophylactic use of closed suction drainage and its adoption is typically founded on anecdotal experience.<sup>[27,30,31]</sup> Only two retrospective cohort studies of supratentorial craniotomy patients were performed and both failed to demonstrate their efficacy in preventing postoperative epidural hematoma.<sup>[30,31]</sup>

This case illustrates the risks of routine negative-pressure subgaleal drainage during cranioplasty for patients with suspected SSFS. To avoid this complication, we recommend refraining from drain placement by conducting meticulous hemostasis, and if considered necessary, withholding vacuum application until after the cranioplasty. Alternatively, one may dispense with suction altogether and allow drainage to occur passively by gravity although the efficacy of such a measure remains unknown.

#### Declaration of patient consent

The authors certify that they have obtained all appropriate patient consent forms. In the form the patient(s) has/have

given his/her/their consent for his/her/their images and other clinical information to be reported in the journal. The patients understand that their names and initials will not be published and due efforts will be made to conceal their identity, but anonymity cannot be guaranteed.

#### Acknowledgment

The preparation of this manuscript was supported by the Kwong Wah Hospital Clinical Research Center.

#### Financial support and sponsorship

Nil.

#### Conflicts of interest

There are no conflicts of interest.

#### References

- Zanaty M, Chalouhi N, Starke RM, Clark SW, Bovenzi CD, Saigh M, *et al.* Complications following cranioplasty: Incidence and predictors in 348 cases. *J Neurosurg* 2015;123:182-8.
- Yamura A, Makino H. Neurological deficits in the presence of the sinking skin flap following decompressive craniectomy. *Neurol Med Chir (Tokyo)* 1977;17:43-53.
- Annan M, De Toffol B, Hommet C, Mondon K. Sinking skin flap syndrome (or syndrome of the trephined): A review. *Br J Neurosurg* 2015;29:314-8.
- Winkler PA, Stummer W, Linke R, Krishnan KG, Tatsch K. Influence of cranioplasty on postural blood flow regulation, cerebrovascular reserve capacity, and cerebral glucose metabolism. *J Neurosurg* 2000;93:53-61.
- Dujovny M, Fernandez P, Alperin N, Betz W, Misra M, Mafee M, *et al.* Post-cranioplasty cerebrospinal fluid hydrodynamic changes: Magnetic resonance imaging quantitative analysis. *Neurol Res* 1997;19:311-6.
- Yoshida K, Furuse M, Izawa A, Iizima N, Kuchiwaki H, Inao S, *et al.* Dynamics of cerebral blood flow and metabolism in patients with cranioplasty as evaluated by <sup>133</sup>Xe CT and <sup>31</sup>P magnetic resonance spectroscopy. *J Neurol Neurosurg Psychiatry* 1996;61:166-71.
- Chitale R, Tjoumakaris S, Gonzalez F, Dumont AS, Rosenwasser RH, Jabbour P, *et al.* Infratentorial and supratentorial strokes after a cranioplasty. *Neurologist* 2013;19:17-21.
- Cecchi PC, Rizzo P, Campello M, Schwarz A. Haemorrhagic infarction after autologous cranioplasty in a patient with sinking flap syndrome. *Acta Neurochir (Wien)* 2008;150:409-10.
- Moon HJ, Park J, Kim SD, Lim DJ, Park JY. Multiple, sequential, remote intracranial hematomas following cranioplasty. *J Korean Neurosurg* 2007;42:228-31.
- Lee GS, Park SQ, Kim R, Cho SJ. Unexpected severe cerebral edema after cranioplasty: Case report and literature review. *J Korean Neurosurg Soc* 2015;58:76-8.
- Van Roost D, Thees C, Brenke C, Oettel F, Winkler PA, Schramm J, *et al.* Pseudohypoxic brain swelling: A newly defined complication after uneventful brain surgery, probably related to suction drainage. *Neurosurgery* 2003;53:1315-26.
- Mohindra S, Mukherjee KK, Chhabra R, Khosla VK. Subgaleal suction drain leading to fatal sagittal sinus haemorrhage. *Br J Neurosurg* 2005;19:352-4.
- Toshniwal GR, Bhagat H, Rath GP. Bradycardia following negative pressure suction of subgaleal drain during craniotomy

- closure. *Acta Neurochir (Wien)* 2007;149:1077-9.
14. Karamchandani K, Chouhan RS, Bithal PK, Dash HH. Severe bradycardia and hypotension after connecting negative pressure to the subgaleal drain during craniotomy closure. *Br J Anaesth* 2006;96:608-10.
  15. Prabhakar H, Bithal PK, Chouhan RS, Dash HH. Rupture of intracranial aneurysm after partial clipping due to aspiration drainage system – A case report. *Middle East J Anaesthesiol* 2008;19:1185-90.
  16. Honeybul S. Sudden death following cranioplasty: A complication of decompressive craniectomy for head injury. *Br J Neurosurg* 2011;25:343-5.
  17. Roth J, Galeano E, Milla S, Hartmannsgruber MW, Weiner HL. Multiple epidural hematomas and hemodynamic collapse caused by a subgaleal drain and suction-induced intracranial hypotension: Case report. *Neurosurgery* 2011;68:E271-5.
  18. Zebian B, Critchley G. Sudden death following cranioplasty: A complication of decompressive craniectomy for head injury. *Br J Neurosurg* 2011;25:785-6.
  19. Bhagat H, Mangal K, Jain A, Sinha R, Mallik V, Gupta SK, *et al.* Asystole following craniotomy closure: Yet another complication of negative-pressure suctioning of subgaleal drain. *Indian J Anaesth* 2012;56:304-5.
  20. Yadav M, Nikhar SA, Kulkarni DK, Gopinath R. Cardiac arrest after connecting negative pressure to the subgaleal drain during craniotomy closure. *Case Rep Anesthesiol* 2014;2014:146870.
  21. Broughton E, Pobereskin L, Whitfield PC. Seven years of cranioplasty in a regional neurosurgical centre. *Br J Neurosurg* 2014;28:34-9.
  22. Sviri GE. Massive cerebral swelling immediately after cranioplasty, a fatal and unpredictable complication: Report of 4 cases. *J Neurosurg* 2015;123:1188-93.
  23. Honeybul S, Damodaran O, Lind CR, Lee G. Malignant cerebral swelling following cranioplasty. *J Clin Neurosci* 2016;29:3-6.
  24. Kaneshiro Y, Murata K, Yamauchi S, Urano Y. Fatal cerebral swelling immediately after cranioplasty: A case report. *Surg Neurol Int* 2017;8:156.
  25. Shen L, Zhou Y, Xu J, Su Z. Malignant cerebral swelling after a cranioplasty: A case report and literature review. *World Neurosurg* 2017. pii: S1878-8750(17) 31830-2.
  26. Dieulafoy G. In: Masson G, editor. *Treatise on the Aspiration of Morbid Liquids, Medico-Surgical Methods for Diagnosis and Treatment*. Paris: Librairie de L'Academie de Medicine; 1873.
  27. Grobmyer SR, Graham D, Brennan MF, Coit D. High-pressure gradients generated by closed-suction surgical drainage systems. *Surg Infect (Larchmt)* 2002;3:245-9.
  28. Demetriades AK. Negative pressure suction from subgaleal drainage: Bradycardia and decreased consciousness. *Acta Neurochir (Wien)* 2008;150:1111.
  29. Cuneo RA, Caronna JJ, Pitts L, Townsend J, Winestock DP. Upward transtentorial herniation: Seven cases and a literature review. *Arch Neurol* 1979;36:618-23.
  30. Choi SY, Yoon SM, Yoo CJ, Park CW, Kim YB, Kim WK, *et al.* Necessity of surgical site closed suction drain for pterional craniotomy. *J Cerebrovasc Endovasc Neurosurg* 2015;17:194-202.
  31. Guangming Z, Huancong Z, Wenjing Z, Guoqiang C, Xiaosong W. Should epidural drain be recommended after supratentorial craniotomy for epileptic patients? *Surg Neurol* 2009;72:138-41.
  32. Hernández-Palazón J, Tortosa JA, Sánchez-Bautista S, Martínez-Lage JF, Pérez-Flores D. Cardiovascular disturbances caused by extradural negative pressure drainage systems after intracranial surgery. *Br J Anaesth* 1998;80:599-601.