

Access this article online
Quick Response Code:

Website: www.jlponline.org
DOI: 10.4103/JLP.JLP_48_18

# Occurrence and characterization of hyperviscous K1 and K2 serotype in *Klebsiella pneumoniae*

Poothakuzhiyil Remya, Mariappan Shanthi, Uma Sekar

## Abstract:

**BACKGROUND:** *Klebsiella pneumoniae* causes both nosocomial and community-associated infections. Hypervirulent *K. pneumoniae* (hvKP), new variant of *K. pneumoniae*, can cause invasive infections in young healthy individuals as well as in the immunocompromised population. Hypervirulent strains frequently belong to capsular serotypes K1 or K2. Emergence of antimicrobial resistance in hvKP is a cause for concern.

**AIM AND OBJECTIVE:** The present study was done to detect the K1 and K2 serotypes among clinical isolates of *K. pneumoniae*, spectrum of infections caused by them and presence of common beta-lactamases encoding genes in them.

**MATERIALS AND METHODS:** A total of 370 isolates of *K. pneumoniae*, isolated from various clinical samples over a period of 1 year was included in this study. Antibiotic susceptibility testing to various classes of antimicrobials was done as per Clinical and Laboratory Standard Institute guidelines. The presence of *K2A* (specific to serotype K2), *magA* (specific to serotype K1), and *mpA* genes was detected by multiplex polymerase chain reaction (PCR). Extended-spectrum beta-lactamases (TEM, SHV, and CTX-M), plasmid-mediated AmpCs (MOX, CIT, DHA, ACC, EBC, and FOX), and carbapenemase genes (IMP, VIM, NDM, KPC, and OXA-48) were also determined by PCR.

**RESULTS:** Among the 370 isolates, 8 harbored *K2A* gene and one harbored *magA*. *mpA* gene was detected in three isolates along with K1 or K2 serotypes. Seven *K2A*-positive isolates were resistant to one or more classes of antimicrobials. The studied ESBL genes were present in four isolates. Two isolates harbored carbapenemase genes (NDM-1, OXA-48) along with ESBLs.

**CONCLUSION:** K2 serotype is more prevalent among hvKP isolates. They can harbor ESBLs and Carbapenemase genes. K1 serotype is rather uncommon in *K. pneumoniae*. Acquisition of multidrug-resistant genes by these strains adds to their virulence and limits the treatment options.

## Key words:

Hypervirulent, K1 or K2 serotype, *Klebsiella pneumoniae*, molecular method, multidrug resistance, underlying diseases

## Introduction

*Klebsiella pneumoniae* is a well-known human pathogen associated with both community-acquired and nosocomial infections. Classic *K. pneumoniae* (cKP) is the term used for the commonly recognized strains of *K. pneumoniae*, which cause bacteremia, pneumonia, urinary tract, and

other infections. In 1986, hypervirulent *K. pneumoniae* (hvKP), a new variant of these bacteria, was first reported from Taiwan. Compared to cKP, hvKP strains produce hypermucoviscous colonies when grown on agar plates. They are capable of causing invasive and serious infections in immunocompromised as well as in healthy individuals.<sup>[1,2]</sup> Hypervirulent strains of *K. pneumoniae* are now circulating worldwide.<sup>[3]</sup>

This is an open access journal, and articles are distributed under the terms of the Creative Commons Attribution-NonCommercial-ShareAlike 4.0 License, which allows others to remix, tweak, and build upon the work non-commercially, as long as appropriate credit is given and the new creations are licensed under the identical terms.

For reprints contact: reprints@medknow.com

**How to cite this article:** Remya P, Shanthi M, Sekar U. Occurrence and characterization of hyperviscous K1 and K2 serotype in *Klebsiella pneumoniae*. J Lab Physicians 2018;10:283-8.

Department of  
Microbiology,  
Sri Ramachandra Medical  
College and Research  
Institute, Chennai,  
Tamil Nadu, India

**Address for  
correspondence:**  
Dr. Poothakuzhiyil Remya,  
Department of  
Microbiology,  
Sri Ramachandra  
Medical College and  
Research Institute, Porur,  
Chennai - 600 116,  
Tamil Nadu, India.  
E-mail: remmoos@gmail.  
com

Submission: 07-04-2018  
Accepted: 10-04-2018

There are a number of virulence factors that contribute to the pathogenicity of *K. pneumoniae*. They include hypermucoviscosity-specific capsular serotypes, especially K1 or K2, virulence gene *FimH* (fimbrial adhesion), *rmpA* (regulator of mucoid phenotype), *uge* (UDP-glucose 4-epimerase), *kfu* (an iron uptake system), and *alls* (allantoin metabolism).<sup>[4,5]</sup>

*K. pneumoniae* is known to synthesize capsules, which are essential for its virulence. At least, 78 capsular serotypes exist in this bacteria. Among hvKP, eight capsular serotypes occur; of them K1 and K2 are the most virulent that have been described to date. The capsules of K1 and K2 serotype essentially protect the bacteria from phagocytosis.<sup>[4,6]</sup>

K1 or K2 serotypes are more prevalent in invasive infections.<sup>[7]</sup> Serotype-specific gene for K1 is *magA* (mucoviscosity associated gene A), and for K2 serotype, it is *K2A* (K2 capsule-associated gene A). *magA* gene was first described by Fang *et al.* in 2004 and Chuang *et al.* found that it is restricted to the gene cluster of capsular serotype K1. Similarly, *K2A* gene, which corresponds to *magA* in K1 serotype, is highly specific to the *cps* gene cluster of capsular serotype K2. Detection of both *magA* and *K2A* is a rapid and accurate method for the detection of K1 and K2 serotypes of *K. pneumoniae*.<sup>[8,9]</sup> *rmpA* (regulator of mucoid phenotype A) gene is a plasmid-mediated regulator of capsular polysaccharide synthesis. It is also associated with hypermucoviscosity phenotype and invasive disease.<sup>[2,8]</sup>

The past hypervirulent strains of *K. pneumoniae* were susceptible to all antimicrobials except ampicillin.<sup>[6]</sup> However, the first report from China in 2014 described that the clonal complexes of hvKP can be MDR.<sup>[3]</sup>

This study was conducted to detect the K1 and K2 serotypes among clinical isolates of *K. pneumoniae*, the spectrum of infections caused by them and the presence of common beta-lactamases encoding genes in them.

## Materials and Methods

### Bacterial isolates

The study was conducted in a University teaching hospital in South India. A total number of 370 clinically significant, consecutive, nonduplicate isolates of *K. pneumoniae*, collected from September 2014 to August 2015 were included in this study.

The source of isolates were urine ( $n = 170$ ), exudative specimens ( $n = 132$ ), respiratory secretions such as bronchial wash, endotracheal aspirate, pleural fluid ( $n = 38$ ), and blood ( $n = 30$ ).

The isolates were identified up to species level by automated system (VITEK2 GN-card; BioMerieux, Brussels, Belgium) and/or standard biochemical tests.<sup>[10]</sup>

The clinical significance of all isolates was determined by significant colony count, presence of bacteria in gram stain and correlating clinical history.

### Phenotypic detection of hyperviscosity

Hyperviscosity of the isolates was tested by evaluating the formation of a mucoviscous string of >5 mm, when using an inoculation loop to stretch a colony grown on an agar plate.<sup>[1]</sup>

### Antimicrobial susceptibility testing

Antibiotic susceptibility testing was done by Kirby–Bauer disc diffusion method for different classes of antibiotics such as cefotaxime (30 µg), ceftazidime (30 µg), cefoxitin (30 µg), amikacin (30 µg), and ciprofloxacin (5 µg), piperacillin/tazobactam (100 µg/10 µg), and imipenem (10 µg) (Himedia laboratories, Mumbai, Maharashtra, India) as per Clinical and Laboratory Standard Institute guidelines.<sup>[11]</sup> ATCC *Escherichia coli* 25,922 was used as control strain.

The clinical history was sought for all the K1 and K2 serotypes from the medical records.

### Molecular methods

#### Multiplex polymerase chain reaction for virulence-associated genes

Bacterial DNA was extracted by boiling method. Genomic DNA was used as the template and multiplex polymerase chain reaction (PCR) was carried out to amplify *magA* (specific for K1 serotype), *K2A* (specific for K2 serotype), and *rmpA* genes as per earlier described methods.<sup>[5]</sup> PCR was performed with a final volume of 25 µl. Each reaction contained 10 pmol of each primer (Sigma-Aldrich, India), 10 mM of dNTP mixture (Takara, India), 5U Taq polymerase (Takara, India) in 2.5 µl of 10X Taq polymerase buffer (Mg<sup>2+</sup>+plus). A volume of 2 µl of template DNA was added to 23 µl of the master mixture. Negative controls were PCR mixture with water (instead of template DNA) and were included in every PCR run.

The PCR conditions were as follows: initial activation at 95°C for 15 min, followed by 30 cycles at 94°C for 30 s, annealing at 60°C for 90 s, extension at 72°C for 60 s, and the final extension was at 72°C for 10 min. The amplicons were separated at 100 V in a 1.5% agarose gel containing ethidium bromide.

The primers used are summarized in Table 1. Previously, characterized strains were used as positive controls.

### Detection of beta-lactamase encoding genes by polymerase chain reaction

For the study isolates, PCR was performed to detect the presence of common lactamase genes namely, ESBLs (TEM, SHV, and CTX-M), plasmid-mediated AmpCs (MOX, CIT, DHA, ACC, EBC, and FOX), and Carbapenemase genes (IMP, VIM, NDM, and KPC and OXA-48). The primers used for beta-lactamase genes were selected based on the previous studies.<sup>[12-14]</sup>

### DNA sequencing

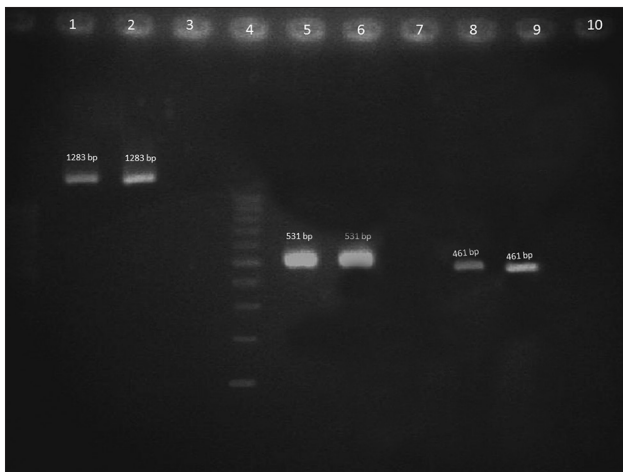
PCR positive amplicons were purified and sequenced by big dye 3.1 cycle sequencing kit using the Sanger AB13730XL DNA analyzing instrument (Sci genome, India). The nucleotide sequences analyzed were compared with the sequence available at the National Centre for Biotechnology information website (www.ncbi.nlm.nih.gov).

The sequences were submitted to the genbank with the following accession numbers MF188922 (*K2A*), MF188924 (*magA*), and MF188921 (*rmpA*).

## Results

Of the 370 isolates 9 (2.4%) carried one or more studied virulence genes, and all the nine isolates were positive for the string test. Six isolates of them carried only *K2A*. One isolate harbored *magA* along with *rmpA*. Genes for *K2A* and *rmpA* coexisted in two isolates. Gel picture of the amplified genes was showed in Figure 1.

Of the K1, K2 serotypes serotype positive isolates, two were susceptible to all classes of antibiotics tested while the others (*n* = 7) exhibited resistance to one or more classes of antibiotics. The resistance exhibited



**Figure 1:** Gel picture of the amplified genes. Lane 1-magA test strain, Lane 2 – magA-positive control, Lane 3 - Negative control, Lane 4 – 100 bp Ladder, Lane 5-K2A test strain, Lane 6 - K2A positive control, Lane 7 - Negative control, Lane 8-rmpA test strain, Lane 9 – rmpA-positive control, and Lane 10 - Negative control

to various classes of antibiotics were as follows cefotaxime 100% (7/7), ceftazidime 100% (7/7), ceftoxitin 57% (4/7), amikacin 42.8% (3/7), ciprofloxacin 57% (4/7), piperacillin/tazobactam 71.4% (5/7), and imipenem 28.5%(2/7).

The occurrence of the studied beta-lactamase genes along with virulence is shown in

Table 2. Notably, plasmid-mediated AmpC genes were not detected in any of the K1 or K2 serotypes.

All three studied ESBL genes, TEM+SHV+CTX-M together were detected along with *K2A* gene in 4 isolates of *K. pneumoniae*, and one harbored two ESBL genes (SHV+CTX-M). SHV alone was found in one *K2A*-positive isolate. Only one *magA*-positive isolate in this study carried *blaSHV*.

Of the eight *K2A* positives, two isolates harbored NDM and OXA-48 along with all three ESBL genes.

Clinical profile of the patients harboring K1, K2 serotypes and the beta-lactamase genes detected in them are shown in Table 3.

## Discussion

*K. pneumoniae* is a common nosocomial and a potential community-acquired pathogen which can cause infections in all age groups, especially in the

**Table 1: Primers used for virulence genes detection**

Gene	Primer	Amplicon
K2A	F-CAACCATGGTGGTGCATTAG	531
	R-TGGTAGCCATATCCCTTTGG	
magA	F-GGTGCTCTTACATCATTGC	1283
	R-GCAATGGCCATTTGCGTTAG	
rmpA	F-CATTAGAGTATTGGTTGACAG	461
	R-CTTGCATGAGCCATCTTTCA	

**Table 2: Coexistence of beta-lactamase genes along with virulence genes**

Beta-lactamase genes	Virulence genes		
	K2A alone (K2 serotype)	magA (K1 serotype) and rmpA	K2A and rmpA
ESBL genes			
TEM + SHV + CTX-M	4	Nil	Nil
SHV alone	Nil	1	1
SHV + CTX-M	Nil	Nil	1
AmpC beta lactamases	Nil	Nil	Nil
Carbapenemase encoding genes			
IMP/VIM	Nil	Nil	Nil
NDM + OXA-48	2	Nil	Nil
TEM + SHV + CTX-M			
KPC	Nil	Nil	Nil

**Table 3: Clinical profile and beta-lactamase genes detected in the patients harboring K1, K2 serotypes**

Sample ID	Serotype	Source of specimen	Diagnosis	Underlying disease conditions	Beta-lactamase genes detected	Outcome
E8097	K1	Pus	Perianal abscess	Diabetes mellitus	SHV alone	Recovered
MS6414	K2	Blood	Cholangitis with sepsis	Chronic pancreatitis, diabetes mellitus, postwhipples surgery	TEM + SHV + CTX-M NDM + OXA-48	Death
MS7499	K2	Broncho alveolar lavage	Sepsis	Diabetes mellitus	TEM + SHV + CTX-M	Death
U29674	K2	Urine	Urinary tract infection	None	TEM + SHV + CTX-M	Recovered
U29821	K2	Urine	Urinary tract infection	CA cervix	TEM + SHV + CTX-M NDM + OXA-48	Recovered
U24755	K2	Urine	Urinary tract Infection	Chronic kidney disease, diabetes mellitus	TEM + SHV + CTX-M	Recovered
MS607	K2	Pus	Chronic otitis media	None	TEM + SHV + CTX-M	Recovered
R2928	K2	Broncho alveolar lavage	Pneumonia	Decompensated liver disease, diabetes mellitus	SHV alone	Recovered
R3289	K2	Broncho alveolar lavage	Pneumonia	Adenocarcinoma of lung	SHV + CTX-M	Recovered

immunocompromised. The emergence of hypervirulent strains broadens the occurrence of infection among healthy and immunocompetent individuals also.<sup>[15,16]</sup> Several virulence factors are identified in *K. pneumoniae* including capsules, lipopolysaccharides, siderophores, and fimbriae. Of these, capsule is the most studied virulence factor. Among the capsular serotypes identified to date, K1 and K2 serotypes are mostly reported in invasive diseases and known to be hypervirulent or hypermucoviscous.<sup>[17]</sup>

In this study, 2.16% of the total isolates only harboured *K2A* gene (specific to K2 serotype), and only one carried *magA* gene (specific to K1 serotype). In the present study, K2 serotype is the most predominant among hyperviscous *K. pneumoniae*. This is in contrast to observations made in other countries. K1 is the most predominant serotype in a study from east China (68.9%) followed by K2 serotype (20%). They were isolated from liver abscess patients.<sup>[2]</sup> In Asia, K1 is the main serotype followed by K2.<sup>[18]</sup> A study from Germany in 2014 reported one K1 and one K2 serotype in liver abscess patients.<sup>[18]</sup> In Taiwan, K1 serotype was detected in 63.4% of liver abscess, and K2 in 14.2%.<sup>[19]</sup> A publication from Japan in 2016, described K1 serotype in one and K2 serotype in two liver abscess patients.<sup>[20]</sup> The presence of K1 or K2 serotypes are also being reported from North America, Europe, Australia, Africa, and the Middle East.<sup>[6]</sup> Although K1/K2 serotypes are frequently associated with liver abscess, they have been isolated from extrahepatic abscess also.<sup>[2,4,18,21]</sup>

In this study, three isolates coharbored *rmpA* gene along with K1 and K2 serotypes. Association of *rmpA* gene was found in 55% (16/29) of isolates elsewhere.<sup>[1]</sup> Occurrence of *rmpA* gene along with K2 serotypes has been reported from France and Japan also.<sup>[3,20]</sup>

In the past, hvKP were susceptible to all classes of antibiotics, except ampicillin.<sup>[6]</sup> In this study, only two isolates among the nine K1 or K2 serotypes were susceptible to all classes of antibiotics tested. The seven *K2A* positive isolates were resistant to one more classes of antimicrobials tested. A study from France reported resistance to third-generation cephalosporins and to all aminoglycosides except Amikacin among K2 serotypes.<sup>[3]</sup> Another study by Zhang *et al.* reported resistance to all classes of antibiotics including carbapenems among K1 and K2 serotypes.<sup>[22]</sup>

Antibiotic resistance is commonly associated with cKP, and till 2014, it was believed that hvKP is independent of multidrug resistance.<sup>[22,23]</sup> Only two isolates with SHV-1 was detected from K1 and K2 serotypes in this study. This SHV-1 is a chromosomal gene inherently found in all *K. pneumoniae*. The presence of ESBL genes, such as TEM, SHV, and CTX-M, were detected in 4 (4/8) of K2 serotypes. Surgers L *et al.* (2016). observed CTX-M3-producing strain of K2 hvKP in a patient with liver abscess ( $n = 3$ ).<sup>[3]</sup> Another study from China, detected 17% (5/29) of hvKP producing ESBLs.<sup>[1]</sup>

Carbapenemase genes were detected in two K2 serotypes in this study. In both the isolate, NDM 1 and OXA 48 were present along with ESBL (TEM, SHV and CTX M) genes. To the best of our knowledge, no study has yet reported the presence of NDM and OXA-48 together in a K2 serotype. The presence of NDM-1 in K1 serotype was reported by Fabrice Compain *et al.* in a recent study.<sup>[24]</sup> Mei *et al.* in 2017 described the presence of NDM-5 in K2 serotype.<sup>[25]</sup> Another study from China highlighted the occurrence of KPC-2 along with K1 hvKP.<sup>[22]</sup>

In this study, K1 serotype was detected in one patient with perianal abscess. In Korea, 4.9% of *K. pneumoniae* isolated from stool specimens were of K1 serotype.<sup>[26]</sup> Liu *et al.*

opined that *K. pneumoniae* is one of the major causative agents for perianal abscess in diabetic patients.<sup>[27]</sup>

In the present study, fatal outcome was observed in two patients with K2 *K. pneumoniae*. One of them had sepsis due to cholangitis caused by K2 serotype harboring TEM, SHV, CTX-M, NDM, and OXA 48. The other patient also had sepsis associated with pneumonia caused by K2 serotype harboring TEM, SHV, and CTX-M. Regard to underlying or comorbid condition, two patients in this study had no identifiable underlying disease. Five had diabetes mellitus. This is one of the well-recognized risk factor for hvKP infections. Malignancy, chronic kidney disease, and chronic liver disease were the other risk factors identified in the study patients.

## Conclusion

Acquisition of MDR genes by hvKP strains is worrisome and should be closely monitored. Management of infections caused by these will become extremely challenging because the outcome will be worse with inappropriate treatment. A combination of multidrug resistance and hypervirulence will lead to poorer outcomes. Detection of genes determining the hyperviscosity is therefore important for anticipating severe infections with invasive spread. Molecular typing of the hvKP can help to determine clonal relatedness of the strains and give insights with their epidemiology.

## Acknowledgment

All the authors are grateful for the financial assistance provided by Sri Ramachandra Medical College and Research Institute as Founder Chancellor Fellowship.

## Financial support and sponsorship

This study was financially supported by the Founder Chancellor Ramasamy Udayar Fellowship provided by Sri Ramachandra Medical College and Research Institute.

## Conflicts of interest

There are no conflicts of interest.

## References

- Li W, Sun G, Yu Y, Li N, Chen M, Jin R, et al. Increasing occurrence of antimicrobial-resistant hypervirulent (hypermucoviscous) *Klebsiella pneumoniae* isolates in China. *Clin Infect Dis* 2014;58:225-32.
- Qu TT, Zhou JC, Jiang Y, Shi KR, Li B, Shen P, et al. Clinical and microbiological characteristics of *Klebsiella pneumoniae* liver abscess in East China. *BMC Infect Dis* 2015;15:161.
- Surgers L, Boyd A, Girard PM, Arlet G, Decré D. ESBL-producing strain of hypervirulent *Klebsiella pneumoniae* K2, France. *Emerg Infect Dis* 2016;22:1687-8.
- Ku YH, Chuang YC, Yu WL. Clinical spectrum and molecular characteristics of *Klebsiella pneumoniae* causing community-acquired extrahepatic abscess. *J Microbiol Immunol Infect* 2008;41:311-7.
- Compain F, Babosan A, Brisse S, Genel N, Audo J, Ailloud F, et al. Multiplex PCR for detection of seven virulence factors and K1/K2 capsular serotypes of *Klebsiella pneumoniae*. *J Clin Microbiol* 2014;52:4377-80.
- Shon AS, Bajwa RP, Russo TA. Hypervirulent (hypermucoviscous) *Klebsiella pneumoniae*: A new and dangerous breed. *Virulence* 2013;4:107-18.
- Lin JC, Siu LK, Fung CP, Tsou HH, Wang JJ, Chen CT, et al. Impaired phagocytosis of capsular serotypes K1 or K2 *Klebsiella pneumoniae* in type 2 diabetes mellitus patients with poor glycemic control. *J Clin Endocrinol Metab* 2006;91:3084-7.
- Al-Jailawi MH, Zedan TH, Jassim KA. Multiplex-PCR assay for identification of *Klebsiella pneumoniae*. *Int J Pharm Sci Rev Res* 2014;26:112-7.
- Yu WL, Fung CP, Ko WC, Cheng KC, Lee CC, Chuang YC, et al. Polymerase chain reaction analysis for detecting capsule serotypes K1 and K2 of *Klebsiella pneumoniae* causing abscesses of the liver and other sites. *J Infect Dis* 2007;195:1235-6.
- Collee JG, Miles RS, Matt B. Test for identification of bacteria. In: Collee JG, Fraser AG, Marmion BP, Simmons A, editors. *Mackie and McCartney Practical Medical Microbiology*. 14<sup>th</sup> ed., Ch. 7. Edinburgh: Churchill Livingstone; 1996. p. 131-49.
- Clinical and Laboratory Standards Institute. Performance Standards for Antimicrobial Susceptibility Testing. 25<sup>th</sup> Informational Supplement Document M100-S25. Wayne: Clinical and Laboratory Standards; 2015.
- Hassan MI, Alkharsah KR, Alzahrani AJ, Obeid OE, Khamis AH, Diab A, et al. Detection of extended spectrum beta-lactamases-producing isolates and effect of AmpC overlapping. *J Infect Dev Ctries* 2013;7:618-29.
- Pérez-Pérez FJ, Hanson ND. Detection of plasmid-mediated AmpC beta-lactamase genes in clinical isolates by using multiplex PCR. *J Clin Microbiol* 2002;40:2153-62.
- Poirel L, Walsh TR, Cuvillier V, Nordmann P. Multiplex PCR for detection of acquired carbapenemase genes. *Diagn Microbiol Infect Dis* 2011;70:119-23.
- Yang PY, Huang CC, Leu HS, Chiang PC, Wu TL, Tsao TC, et al. *Klebsiella pneumoniae* bacteremia: Community-acquired vs. Nosocomial infections. *Chang Gung Med J* 2001;24:688-96.
- Paczosa MK, Meccas J. *Klebsiella pneumoniae*: Going on the offense with a strong defense. *Microbiol Mol Biol Rev* 2016;80:629-61.
- Ko KS. The contribution of capsule polysaccharide genes to virulence of *Klebsiella pneumoniae*. *Virulence* 2017;8:485-6.
- Bilal S, Volz MS, Fiedler T, Podschun R, Schneider T. *Klebsiella pneumoniae*-induced liver abscesses, Germany. *Emerg Infect Dis* 2014;20:1939-40.
- Fung CP, Chang FY, Lee SC, Hu BS, Kuo BI, Liu CY, et al. A global emerging disease of *Klebsiella pneumoniae* liver abscess: Is serotype K1 an important factor for complicated endophthalmitis? *Gut* 2002;50:420-4.
- Seo R, Kudo D, Gu Y, Yano H, Aoyagi T, Omura T, et al. Invasive liver abscess syndrome caused by *Klebsiella pneumoniae* with definite K2 serotyping in Japan: A case report. *Surg Case Rep* 2016;2:72.
- Rivero A, Gomez E, Alland D, Huang DB, Chiang T. K2 serotype *Klebsiella pneumoniae* causing a liver abscess associated with infective endocarditis. *J Clin Microbiol* 2010;48:639-41.
- Zhang R, Lin D, Chan EW, Gu D, Chen GX, Chen S, et al. Emergence of carbapenem-resistant serotype K1 hypervirulent *Klebsiella pneumoniae* strains in China. *Antimicrob Agents Chemother* 2016;60:709-11.
- McCabe R, Lambert L, Frazee B. Invasive *Klebsiella pneumoniae* infections, California, USA. *Emerg Infect Dis* 2010;16:1490-1.
- Compain F, Vandenberghe A, Gominet M, Genel N, Lebeaux D, Ramahefasolo A, et al. Primary osteomyelitis caused by an NDM-1-producing *K. pneumoniae* strain of the highly virulent

- sequence type 23. *Emerg Microbes Infect* 2017;6:e57.
25. Mei YF, Liu PP, Wan LG, Liu Y, Wang LH, Wei DD, *et al.* Virulence and genomic feature of a virulent *Klebsiella pneumoniae* sequence type 14 strain of serotype K2 harboring *bla*<sub>NDM-5</sub> in China. *Front Microbiol* 2017;8:335.
26. Chung DR, Lee H, Park MH, Jung SI, Chang HH, Kim YS, *et al.* Fecal carriage of serotype K1 *Klebsiella pneumoniae* ST23 strains closely related to liver abscess isolates in Koreans living in Korea. *Eur J Clin Microbiol Infect Dis* 2012;31:481-6.
27. Liu CK, Liu CP, Leung CH, Sun FJ. Clinical and microbiological analysis of adult perianal abscess. *J Microbiol Immunol Infect* 2011;44:204-8.