

Clinical profile and outcome of adult Hodgkin lymphoma: Experience from a tertiary care institution

Rahul Narayan Maddi,
Vijay Gandhi Linga¹,
Kalpathi Krishnamani Iyer¹,
Joseph Stalin Chowdary¹,
Sadashivudu Gundeti¹,
Raghunadharao Digumarti²,
Tara Roshini Paul³

Department of Medical Oncology, Chalmada Anand Rao Institute of Medical Sciences, Karimnagar, ²Director and Department of Medical Oncology, Tata Memorial Center, Vishakapatnam, Andhra Pradesh, Departments of ¹Medical Oncology and ³Pathology, Nizams Institute of Medical Sciences, Hyderabad, Telangana, India

Address for correspondence:

Dr. Vijay Gandhi Linga,
Department of Medical Oncology,
Nizams Institute of Medical
Science, Hyderabad - 500 082,
Telangana, India.
E-mail: vijaygandhilinga@yahoo.com

ABSTRACT

Treatment and outcome of Hodgkin lymphoma (HL) are the true success story of modern medicine. The data from the developing countries on long-term outcome of patients with HL is sparse. **Aims:** Primary objective is to assess the progression-free survival (PFS). Secondary objective are overall survival (OS) and toxicities. **Settings and Design:** This is a retrospective analysis from the case records from a single institution. **Materials and Methods:** Institutional Ethical Committee approval was obtained. Between January 1991 and December 2010, 301 patients (age ≥ 18 years) underwent treatment at our institution. **Statistical Analysis:** Kaplan–Meyer curves were used to calculate the PFS and OS. **Results:** The median age at presentation was 36 years, range from 19 to 75 years. The male to female ratio was 2.9:1. Seventy-five percent of patients had B symptoms. Majority presented in advanced stage (Stage III and IV) disease (64.7%). Mixed cellularity (74.4%) was the most common histology, followed by nodular sclerosis (13.9%). The most common chemotherapy regimen used was ABVD (61%). **Conclusions:** Median follow-up of the cohort was 18.5 months (range 2–225). PFS and OS rate at 5 years is 66.3% and 79.7% respectively.

Key words: Chemotherapy and toxicities, Hodgkin lymphoma, survival

INTRODUCTION

Treatment and outcome of Hodgkin lymphoma (HL) are the true success story of modern medicine. There was a gradual improvement in the outcome of HL with the advent of better understanding of the biology of disease, staging techniques, treatment involving multidiscipline's of modern medicine and tailoring of treatment.^[1–4] The outcome of HL in developed countries from the cancer registries are widely available,^[5–7] few studies with small number of the patient are reported from the Indian subcontinent.^[8–16] This is the first study from the state of Andhra Pradesh, attempting to add data to the existing literature. We have analyzed HL patients treated at our center over a 20-year period.

MATERIALS AND METHODS

This is a retrospective analysis of HL presenting to a single tertiary care center in the region. Between January 1991 and December 2010, 370 patient's aged more than 18yrs who were newly diagnosed. Of these, 301 underwent complete

work-up and received at least 2 cycles of treatment and were analyzed. The initial work-up included detailed clinical evaluation (history and physical examination), complete blood counts, viral markers, two-dimensional echo (if indicated), renal and liver function tests, and serum lactate dehydrogenase. Lymph node (LN) biopsy was done in all patients. Computed tomography (CT) scan or ultrasound of the whole abdomen, CT scan or X-ray of the chest or positron emission tomography-CT whole body. Except in Stage I patients, bone marrow biopsies were done in all other patients. Patients were staged according to the modified Ann Arbor system.^[3,17] A diagnosis of HL was made based on morphological features on the LN biopsy with further confirmation by immunohistochemistry and sub-classification as per the WHO criteria.^[18] A

This is an open access article distributed under the terms of the Creative Commons Attribution-NonCommercial-ShareAlike 3.0 License, which allows others to remix, tweak, and build upon the work non-commercially, as long as the author is credited and the new creations are licensed under the identical terms.

For reprints contact: reprints@medknow.com

How to cite this article: Maddi RN, Linga VG, Iyer KK, Chowdary JS, Gundeti S, Digumarti R, Paul TR. Clinical profile and outcome of adult Hodgkin lymphoma: Experience from a tertiary care institution. Indian J Med Paediatr Oncol 2015;36:255-60.

Access this article online

Quick Response Code:



Website:
www.ijmpo.org

DOI:
10.4103/0971-5851.171550

mediastinal mass occupying more than one-third of the thoracic diameter or any LN mass more than 10 cm was taken as a bulky disease. All the patients were consented for treatment before starting chemotherapy. Institutional ethical committee approval was taken before analyzing the data.

Treatment protocol

A few patients before 1999 received MOPP, COPP/ABV or COPP-type regimens, and standard ABVD chemotherapy was administered in remaining patients. The doses of ABVD are already described.¹¹⁶ Patients with early stage HL (Stages IA, IB, and IIA) were planned for 4 cycles of ABVD chemotherapy followed by involved field radiotherapy (IFRT 25-40 Gy). All the other patients were planned for 6-8 cycles of chemotherapy with radiotherapy (RT) for initial bulky sites and/or residual disease. Patients failing first-line therapy were offered second-line chemotherapy \pm RT.

Response assessment

Patients were examined prior to each dose of chemotherapy for clinical response and toxicity. The response was assessed by both clinical and radiological at the end of 3-4 cycles of chemotherapy and then at the end of therapy. Complete response (CR) was defined as complete resolution of disease at all sites clinically and radiologically and normal bone marrow studies (wherever involved at diagnosis). Partial response (PR) was defined as a decrease in diameter of measurable lesions by $\geq 50\%$. Progressive disease (PD) as the appearance of new lesions or increase in the size of lesions. Stable disease (SD) if does not fit into above two criteria.¹¹⁹

Follow-up

Patients in complete remission were followed 3 months for the first 2 years, and 6 months for next 3 years and yearly thereafter.

Statistical analysis

Progression-free survival (PFS) was defined as time from start of treatment till relapse or PD, no CR at the end of first-line treatment, or death due to any cause, loss to follow-up with disease. Overall survival (OS) was defined as the time from the diagnosis to the death, loss to follow-up with the disease. Patient characteristics were analyzed using descriptive statistics. Inferential statistics was utilized for prognostic factors using log-rank *t*-test and the Kaplan–Meier curve, estimated survival. GraphPad prism 4.0 (GraphPad Software Inc, California, USA) is used for the survival curves and prognostic factors.

RESULTS

Patient characteristics are given in Table 1. A total of 301 patients were eligible for analysis. The median age of presentation was 36 years (range 19-75). There were of a total of 224 males and 77 females (ratio 2.9:1). Two

Table 1: Patient characteristics (n = 301)

Parameter	n (%)
Male (male:female)	224 (2.9:1)
Age (range)	Median age 36 years (19-75)
Stage at presentation (%)	
Stage I	37/301 (12.2)
Stage II	69/301 (22.9)
Stage III	117/301 (38.8)
Stage IV	78/301 (25.9)
B symptoms	228/301 (75.7)
Histopathological subtype (%)	
Mixed cellularity	224/301 (74.4)
Nodular sclerosis	42/301 (13.9)
Lymphocyte rich	8/301 (2.6)
Lymphocyte depleted	16/301 (5.3)
Nodular lymphocyte predominant	11/301 (3.6)
Hodgkin lymphoma	
Treatment (%)	
ABVD	184/301 (61.1)
COPP	29/301 (9.6)
COPP + ABV	51/301 (16.9)
MOPP/MVPP	28/301 (9.3)
RT	6/301 (1.9)
Others	4/301 (1.2)
Treatment response (%)	
CR	267/301 (88.7)
PR	27/301 (8.9)
SD	4/301 (1.3)
PD	3/301 (0.9)

RT – Radiotherapy; CR – Complete response; PR – Partial response; SD – Stable disease; PD – Progressive disease

hundred and twenty-eight (75.7%) patients presented with B symptoms. Staging with standard investigations revealed 37/301 (12.2%), 69/301 (22.9%), 117/301 (38.8%) 78/301 (25.9%) as Stage I, II, III and IV respectively. Fifty-five (18.2%) patients had the bulky disease at initial presentation. The histopathological examination revealed mixed cellularity (MC) in 224/301 (74.4%) of patients, followed by nodular sclerosis (NS) in 42/301 (13.9%), lymphocyte rich in 8/301 (2.6%), lymphocyte depleted in 16/301 (5.3%). Eleven patients (3.6%) had nodular lymphocyte predominant HL.

Treatment

Chemotherapy

The standard ABVD every 2 weekly was given in 184/301 (61.1%) as first-line treatment. The hybrid regimen COPP + ABV were given in 51/301 (16.9%). First generation protocol MOPP/MVPP in 28/301 (9.3%) and 29/301 (9.6%) received COPP.

Radiotherapy

Among those treated with chemotherapy, 12.2% received IFRT. Six patients (all Stage IA) received RT alone. The RT doses ranged from 20 to 45 Gy.

Outcome

Response to treatment

At end of the planned first line treatment the response to treatment were evaluated, 267/301 (81%) attained CR, 27/301 (8.9%) had PR, 4/301 (1.3%) had SD and 3/301 (0.9%) had PD. The median follow-up was 18.5 months (range 2-225). The median PFS has not reached yet. The 5 years PFS was 66.3% [Figure 1]. The median OS for the entire cohort has not reached. The OS at 5 years is 79.7%.

Prognostic factors

Stage at diagnosis had significant impact on the PFS, the PFS at 5 years was significantly higher for patients with early stage (Stage IA, IB, IIA) (80.5%) compared to advanced HL (IIB, IIIA, IIIB, IVA, IVB) (65.7%) ($P = 0.005$) [Figure 2]. For the whole group, there was a trend for better PFS for patients without B symptoms ($P = 0.09$). Other factors

like age at diagnosis, gender, histology, hemoglobin, total leukocyte count, absolute lymphocyte count, and serum albumin had no influence on the PFS [Table 2].

In advanced stage disease (IIB-IVB), total leukocyte count at the time of diagnosis had statistical significance for PFS. Other factors like age at diagnosis, gender, histology, hemoglobin, absolute lymphocyte count, and serum albumin did not influence PFS [Table 3].

In the early stage (IA, IB, IIA), there was significant PFS benefit for patients with less than three LN improvement. There was no effect of size of the mediastinal mass, extranodal involvement, bulky disease, and B symptoms on PFS [Table 4].

Toxicities and complications

Grades 3-4 myelosuppression was the most common hematological toxicity with or without febrile neutropenia in 37/301 (12.2%). Other toxicities were anemia, thrombocytopenia, nausea and vomiting, neurotoxicity, pulmonary, and cardiac [Table 5].

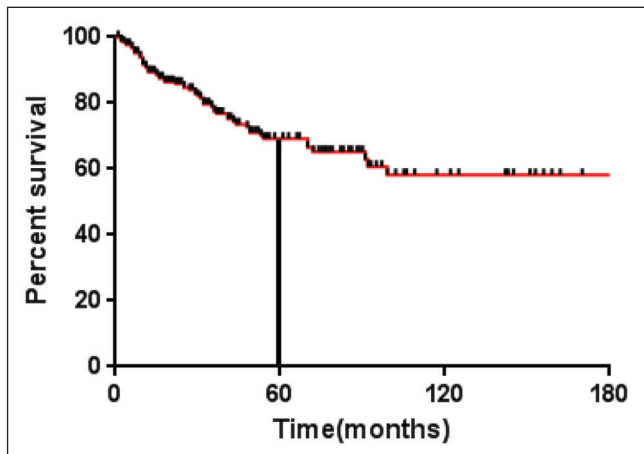


Figure 1: Progression free survival (months) for the entire cohort ($n = 301$)

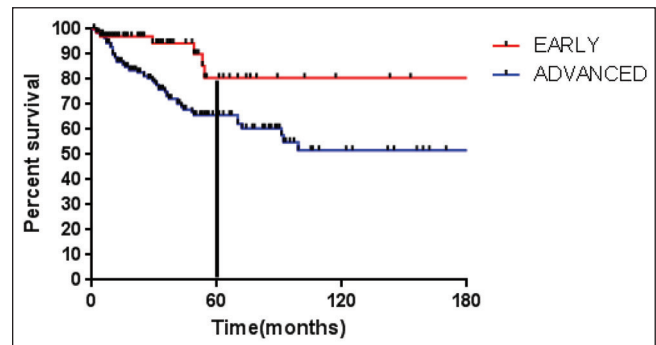


Figure 2: Progression free survival (months) for early and advanced stage

Table 2: Prognostic factors (all patients included)

Variable	All patients n (%)	5 years PFS (%)	P Log-rank test
Age	>45-87 (28.9)	72.9	0.57
	<45-214 (71.0)	67.6	
Sex	Male-224 (74.4)	64.8	0.69
	Female-77 (25.5)	80.3	
Histology NS versus MC	NS-42 (13.9)	72.8	0.94
	MC-224 (74.4)	68.9	
B symptoms	Present-228 (75.7)	66.9	0.09
	Absent-73 (24.2)	73.4	
Stage	Early stage (IA, IB, IIA)-61 (22.2)	80.5	0.005
	Advanced stage (IIB-IV)-240 (77.7)	65.7	
Hemoglobin (in available patients)	<10.5 g/dL-139 (46.1)	63.0	0.24
	>10.5 g/dL-138 (45.8)	73.4	
TLC (in available patients)	<15,000 cells/cmm-239 (79.4)	69.6	0.35
	>15,000 cells/cmm-38 (12.5)	63.3	
Lymphocyte count as % of TLC (in available patients)	<8%-11 (3.57)	85.7	0.38
	>8%-259 (86.3)	67.7	
Serum albumin (in available patients)	>4 g/dL-102 (34.2)	78.2	0.41
	<4 g/dL-172 (57.4)	61.9	

PFS – Progression free survival; TLC – Total lymphocyte count; NS – Nodular sclerosis; MC – Mixed cellularity

Table 3: Advanced stage (Stage IIB-IVB) prognostic factors

Variable	n (240) (%)	5 years PFS (%)	P Log-rank test
Age	>45 - 85 (35.4)	63	0.53
	<45 - 155 (64.6)	54	
Sex	Male - 184 (76.6)	58	0.95
	Female - 56 (23.4)	58	
Histology NS versus MC	NS - 32 (15)	50	0.21
	MC - 180 (84.9)	60	
B symptoms	Present - 213 (88.7)	60	0.49
	Absent - 27 (11.3)	43	
Hemoglobin (in available patients)	<10.5 g/dL - 128 (52.8)	54	0.201
	>10.5 g/dL - 97 (40.0)	63	
TLC (in available patients)	<15,000 cells/cmm - 192 (79.3)	63	0.03
	>15,000 cells/cmm - 33 (13.6)	43	
Lymphocyte count as % of TLC (in available patients)	<8% - 11 (4.5)	70	0.212
	>8% - 208 (85.9)	56	
Serum albumin (in available patients)	>4 g/dL - 71 (29.3)	58	0.56
	<4 g/dL - 153 (63.2)	55	

TLC – Total lymphocyte count; NS – Nodular sclerosis; MC – Mixed cellularity; PFS – Progression free survival

Table 4: Early stage (IA/B and IIA)

Variable	n (61)(%)	5 years PFS (%)	P Log-rank test
Number of lymph nodal groups involved	<3-58 (95)	70	0.008
	>3-3 (5)	30	
Large mediastinal mass	Absent-54 (88.5)	72	0.70
	Present-4 (6.5)	30	
Extra nodal involvement	Absent-60 (98.4)	68	0.78
	Present-1 (1.6)	100	
Bulky disease (>10 cm)	Absent-48 (78.6)	70	0.73
	Present-10 (16.3)	65	
B symptoms	Absent-46 (75.4)	67	0.801
	Present-14 (22.9)	64	

PFS – Progression free survival

Table 5: Toxicities and complications

Toxicity	n (%)
Grade 3-4 neutropenia	37 (12.2)
Grade 3-4 anemia	31 (10.2)
Grade 3-4 thrombocytopenia	27 (8.97)
Grade 3-4 nausea and vomiting	23 (7.6)
Grade 3-4 neurotoxicity	6 (1.9)
Lung toxicity	12 (3.9)
Cardiotoxicity	5 (1.6)

DISCUSSION

This retrospective analysis gives us a broad overview about the real world scenario of the cancer treatment facility in the state of Andhra Pradesh. To the best of our knowledge at least 15-20% of patients refuse treatment, the reason could be low socioeconomic status, illiteracy, lack of awareness, distance from the treatment center and moving to better treatment center. At least

20-25% of patients were lost to follow-up at different time points, the reasons could be a relapse, change of address, employment, and others. Since 2008 onwards, the Government of Andhra Pradesh took an initiative to provide a health insurance scheme for below poverty line, this may improve treatment outcomes.

Comparisons between the different studies are given in Table 6. There are two distinct features from this study, the median age of presentation is lesser than the western countries, and there is also the absence of a bimodal distribution, which was also seen in other Indian studies.^[8,13] A similar pattern is also seen in the Asian and Blacks in SEER data.^[6] Other findings are higher M to F ratio, higher frequency of B symptoms, a higher proportion of patients with advanced HL, and MC as the predominant histology subtype. The peak incidence of disease was in the fourth decade, and there was no second peak after 50 years. Median age is slightly higher than in other studies as we have included patients from 19 years, and many Indian studies have included from 15 years.^[8,16] Higher male to female ratio has also been reported in earlier studies from India^[8-16] and other countries with limited resources.^[20] In the present study, the clinical presentation is more or less similar to earlier studies. Here, notably 75.7% of patients had B symptoms at presentation. This is higher than in the studies from developed countries ($\leq 20\%$).^[3-7] Similarly, a higher proportion of patients (64.7%) had Stages III and IV disease, a figure higher than that reported in US SEER data-36%.^[6] These adverse prognostic features at initial presentation in the present study possibly could be due to delay in presentation. Seventy-four percent of patients had MC histology, a figure similar to reports from countries with limited resources,^[20] but much higher than

Table 6: Comparative studies

Parameters	Present study	New Delhi ^[6]	Mumbai ^[6]	US SEER data ^[6]
Study period	1991-2010	1998-2005	1993-1996	2000-2007
Number <i>n</i>	301	262	179	16,710
Age range	19-75 years Median 36 years	15-72 years Median 30 years	<15 years, 49% >15 years, 51%	Mean 42 years (white) Mean 38 (Asian/black)
Sex				
Male:female	2.9:1	3.1:1	4:1	1.27:1
B symptoms (%)	75.7	63	55	36
Histology (%)				
MC	74.4	52	66-71	13.1
NS	13.9	38	12-15	59.4
Stage				
I	12.2	15	31	19.3
II	22.9	29	22	39.4
III	38.8	31	39	18.7
IV	25.9	24	8	16.6
Outcome				
PFS	66.3%-5 years	FFTF 78.3% -5 years	EFS 76-88%- 8 years	
OS	79.7%-5 years	86.6%-5 years	89-100%-8 years	RSR- 87%-2 years, 80% - 5 years

SEER – Surveillance Epidemiology and End Results; PFS – Progression free survival; OS – Overall survival, FFTF – Freedom from treatment failure; EFS – Event free survival; RSR – Relative survival risk

that reported from a developed nations where NS subtype is common^[3-7] [Table 6].

In the present study, the patients advanced stage (IIB-IV vs. I-II), is a significant predictor of PFS. Other variable like age, sex, total leukocyte count, absolute lymphocyte count, low hemoglobin, B symptoms, and bulk disease were not predictors for PFS.

In the early stage (IA, IB, IIA) there is significant PFS benefit for patients with less than three LN improvement. In advanced stage disease (IIB-IVB) total leukocyte count at the time of diagnosis has statistical significance for PFS. Other factors like age at diagnosis, gender, histology, hemoglobin, absolute lymphocyte count, and serum albumin had no influence on PFS. The reasons could be small patient numbers, short follow-up period, inclusion of loss to follow-up with the disease as event and selection bias.

The PFS and OS are marginally inferior to the studies from India, as we have included a loss to follow-up with the disease in our present analysis.^[8,13,16] Given the overall circumstances the outcome of HL is encouraging in this part of the country.

Acknowledgments

All the supporting departments at NIMS, M/S Roche and Dr. Ramesh Nimmagadda for R-Lymph Software and Mr. Imran (DEO and CTA).

Financial support and sponsorship

Nil.

Conflicts of interest

There are no conflicts of interest.

REFERENCES

1. Ansell SM. Hodgkin lymphoma: 2012 update on diagnosis, risk-stratification, and management. *Am J Hematol* 2012;87:1096-103.
2. Cerci JJ, Linardi CC, Pracchia LF, Junior JS, Trindade E, Delbeke D, *et al.* 2-[18F]-fluoro-2-desoxy-D-glucose positron emission tomography initial staging impacts on survival in Hodgkin lymphoma. *World J Radiol* 2013;5:484-90.
3. Diehl V, Thomas RK, Re D. Part II: Hodgkin's lymphoma – Diagnosis and treatment. *Lancet Oncol* 2004;5:19-26.
4. Armitage JO. Early-stage Hodgkin's lymphoma. *N Engl J Med* 2010;363:653-62.
5. Pulte D, Jansen L, Gondos A, Emrich K, Holleczeck B, Katalinic A, *et al.* Improved population level survival in younger Hodgkin lymphoma patients in Germany in the early 21st century. *Br J Haematol* 2014;164:851-7.
6. Shenoy P, Maggioncalda A, Malik N, Flowers CR. Incidence patterns and outcomes for Hodgkin lymphoma patients in the United States. *Adv Hematol* 2011;2011:725219.
7. Bessell EM, Bouliotis G, Armstrong S, Baddeley J, Haynes AP, O'Connor S, *et al.* Long-term survival after treatment for Hodgkin's disease (1973-2002): Improved survival with successive 10-year cohorts. *Br J Cancer* 2012;107:531-6.
8. Ganesan P, Kumar L, Raina V, Sharma A, Bakhshi S, Sreenivas V, *et al.* Hodgkin's lymphoma – long-term outcome: An experience from a tertiary care cancer center in North India. *Ann Hematol* 2011;90:1153-60.
9. Ramadas K, Sankaranarayanan R, Nair MK, Nair B, Padmanabhan TK. Adult Hodgkin's disease in Kerala. *Cancer* 1994;73:2213-7.
10. Dinshaw KA, Advani SH, Gopal R, Nair CN, Talvalkar GV, Gangadharan P, *et al.* Management of Hodgkin's disease in western India. *Cancer* 1984;54:1276-82.
11. Shanta V, Sastri DV, Sagar TG, Sasikala K, Krishnamurthi S. A review of Hodgkin's disease at the Cancer Institute, Madras. *Clin Oncol* 1982;8:5-15.
12. Dinshaw K, Pande S, Advani S, Ramakrishnan G, Nair C, Talvalkar G, *et al.* Pediatric Hodgkin's disease in India. *J Clin Oncol* 1985;3:1605-12.

13. Chandi L, Kumar L, Kochupillai V, Dawar R, Singh R. Hodgkin's disease: A retrospective analysis of 15 years experience at a large referral centre. *Natl Med J India* 1998;11:212-7.
14. Arya LS, Dinand V, Thavaraj V, Bakhshi S, Dawar R, Rath GK, *et al.* Hodgkin's disease in Indian children: Outcome with chemotherapy alone. *Pediatr Blood Cancer* 2006;46:26-34.
15. Raina V, Sharma A, Mohanti BK, Kumar R, Dawar R, Rath GK. Etoposide, vinblastine, adriamycin and prednisolone (EVAP) combination chemotherapy as first-line treatment for Hodgkin's disease. *Natl Med J India* 2003;16:199-203.
16. Laskar S, Gupta T, Vimal S, Muckaden MA, Saikia TK, Pai SK, *et al.* Consolidation radiation after complete remission in Hodgkin's disease following six cycles of doxorubicin, bleomycin, vinblastine, and dacarbazine chemotherapy: Is there a need? *J Clin Oncol* 2004;22:62-8.
17. Lister TA, Crowther D, Sutcliffe SB, Glatstein E, Canellos GP, Young RC, *et al.* Report of a committee convened to discuss the evaluation and staging of patients with Hodgkin's disease: Cotswolds meeting. *J Clin Oncol* 1989;7:1630-6.
18. Jaffe ES, Harris NL, Stein H, Vardiman JW, editors. World Health Organization classification of tumors. Pathology and Genetics of Tumors of Hematopoietic and Lymphoid Tissues. Lyon: IARC Press; 2001.
19. Miller AB, Hoogstraten B, Staquet M, Winkler A. Reporting results of cancer treatment. *Cancer* 1981;47:207-14.
20. Gerhartz HH, Beykirch M, Hiller E, Wilmanns W. Chemotherapy dose and survival in advanced Hodgkin's disease. *Acta Haematol* 1993;89:137-40.