

Adrenal metastases in a post-radiation malignant fibrous histiocytoma after low-dose radiation for a benign condition

Prasanth Ganesan,

Seema Kaushal¹,

Sanjay Thulkar²,

Sameer Bakhshi

Departments of Medical Oncology,
¹Pathology and ²Radiodiagnosis,
Dr. B. R. A. Institute Rotary Cancer
Hospital, All India Institute of
Medical Sciences, New Delhi, India

Address for correspondence:

Dr. Sameer Bakhshi,
Department of Medical Oncology,
Dr. B. R. A. Institute Rotary
Cancer Hospital, All India Institute
of Medical Sciences,
New Delhi, India.
E-mail: sambakh@hotmail.com

ABSTRACT

A 29-year-old male presented with an aggressive malignant fibrous histiocytoma of his leg 14 years after he had received low-dose radiation to the area for a benign indication. The other unusual feature of this case was the large unilateral adrenal metastasis. We describe this very rare presentation of sarcoma and briefly review the relevant literature.

Key words: Adrenal gland, radiation, sarcoma

INTRODUCTION

Post-radiation sarcoma (PRS) is a well-described entity, constituting 2-3% of all sarcomas.^[1-3] It occurs after 4-55 years in 0.6-0.8% patients who receive radiation for various indications.^[2,3] Often, they are aggressive tumors; metastases are common and they have a poor prognosis.^[1-4] Osteosarcoma is the most commonly occurring PRS overall, but among soft tissue tumors, malignant fibrous histiocytoma (MFH) predominates.^[1-3] We describe a patient who developed post-radiation MFH with a few unusual features.

CASE REPORT

A 29-year-old male noted right leg swelling which rapidly grew over 4 months. Simultaneously, he developed anorexia and pain in his abdomen. At presentation, he had a soft tissue tumor involving the entire right leg with skin infiltration and ulceration [Figure 1a]. He also had a large

right hypochondrial abdominal mass. Details of past history revealed that 15 years back he had had a local resection of a hemangioma in his right leg. This lesion had recurred a year later which had been treated with local radiotherapy (20 Gy in 5 fractions). Thereafter, he had remained asymptomatic till the current presentation.

Magnetic resonance imaging showed a large soft tissue mass with heterogeneous signal intensity (areas suggestive of hemorrhage and necrosis) involving the entire right leg including the tibial and fibular diaphysis. Abdominal computerized tomography (CT) scan showed a right suprarenal lesion with mass effect on the kidney and liver infiltration [Figure 1b]; additionally inferior vena cava thrombosis was also noted [Figure 1c]. Bone scan showed lesions only in the right tibia and fibula; chest CT scan showed lung metastases [Figure 1c]. In view of the very large ulcerating tumor, the patient underwent a palliative right above knee amputation. Histopathology of the resected specimen showed an MFH with storiform pattern of growth and 5-6 mitoses per high power field; the cells were highly pleomorphic with presence of tumor giant cells, areas of necrosis, and atypical mitosis; histiocytic nature of the tumor was confirmed by CD68 positivity [Figure 2a-d]. Evaluation for a primary adrenal disease revealed normal serum cortisol and urinary catecholamines. Biopsy from the adrenal mass showed a metastatic tumor morphologically

Access this article online

Quick Response Code:



Website:
www.ijmpo.org

DOI:
10.4103/0971-5851.113417

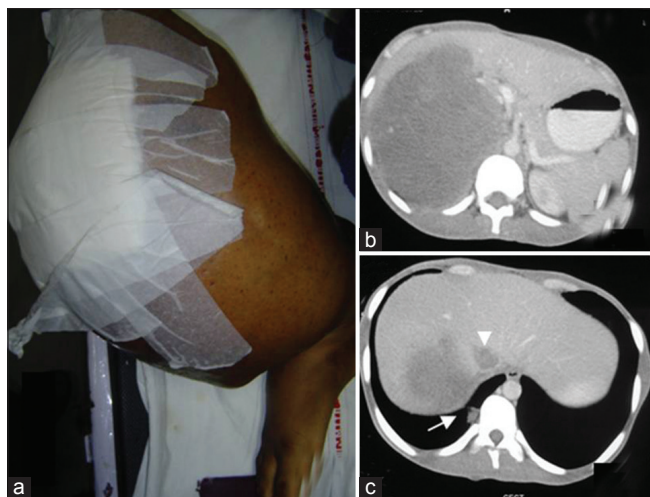


Figure 1: A large tumor mass in the right leg with skin involvement and ulceration (wound dressing done) (a) CT scan of the abdomen shows a large adrenal lesion (b) with infiltration of the liver (c) inferior Vena Caval thrombus (c, arrowhead), and lung metastasis (c, arrow)

similar to the primary leg sarcoma. The patient was started on palliative chemotherapy with single agent doxorubicin; he, however, discontinued after 2 cycles of chemotherapy due to progressive disease.

DISCUSSION

Ionizing radiation has been shown to cause genetic defects including defects in p53 expression which may predispose to cancer.^[5] Though the entity of PRS had been described earlier, it gained acceptance only in 1948, when Cahan *et al.* proposed criteria for diagnosing PRSs of the bone.^[6] In our patient, the prior history of radiation, the long latency from the original radiation, and the development of histologically confirmed sarcoma in the previously irradiated field all point toward a diagnosis of PRS.

Our patient had received a relatively small dose of 20 Gy which had caused the development of sarcoma 14 years later. PRS can occur with both low- and high-energy radiation though, and a well-defined threshold dose does not exist.^[6] Most of the earlier series described cases who had received a median of 50-60 Gy and it was doubted whether low-dose radiation could actually cause sarcoma.^[7] In a series of 47 cases described in 1978, none occurred with doses less than 30 Gy.^[8] Recent reports, however, have described sarcomas developing even with low doses of radiation.^[9] In a series of 65 patients of PRS, Strauss *et al.* reported four cases who had received ≤ 20 Gy radiation.^[5]

Our patient had abdominal pain as a predominant presenting feature, and had a large abdominal lump. Adrenal metastasis, though described in sarcomas including MFH,^[10] is very uncommon and even rarely diagnosed

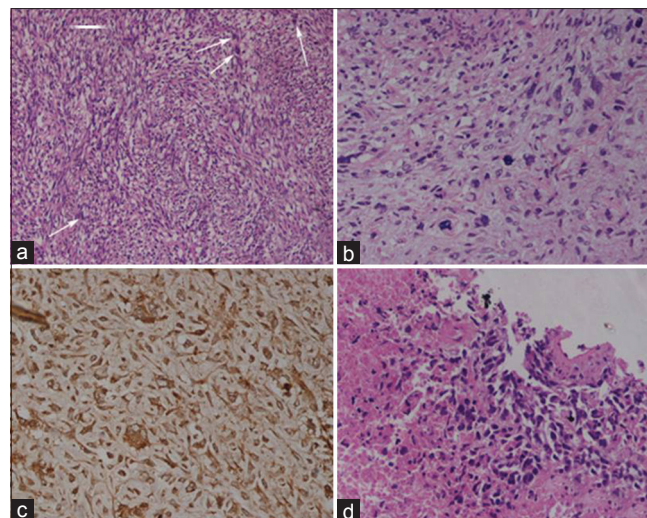


Figure 2: Histology of amputated specimen shows sarcoma with storiform pattern and mitotic figures (arrows) (H and E, $\times 200$) (a) highly pleomorphic tumor cells and atypical mitosis (H and E, $\times 400$) (b) and immunohistochemical positivity for CD68 (Immunoperoxidase, $\times 200$) (c) biopsy from adrenal lesion showing necrosis and metastatic sarcoma with similar morphology (H and E, $\times 400$) (d)

clinically. Most of the described cases have been seen postmortem.^[11,12] In a series of 421 metastatic adrenal tumors, only 7 cases were from sarcomas, all of which were detected post mortem.^[13] In the report by Kobayashi *et al.*, antemortem diagnosis of adrenal metastasis in an asymptomatic patient was possible only by using [F-18] Fluorine 18 Flurodeoxyglucose Positron Emission Tomography-CT imaging.^[10] To our knowledge, this is the first report of a PRS presenting with adrenal metastasis.

The entity of PRS is a disastrous outcome of potentially curative therapies for many tumors. Current radiation practices focus on limiting both the field and dose of radiation to reduce the risks of PRS. Unfortunately, our patient received radiation for a benign indication which led to disastrous consequences much later in life. The case evidences the need for prolonged follow-up in patients who have been treated with ionizing radiation.

REFERENCES

1. Mark RJ, Poen J, Tran LM, Fu YS, Selch MT, Parker RG. Postirradiation sarcomas. A single-institution study and review of the literature. *Cancer* 1994;73:2653-62.
2. Cha C, Antonescu CR, Quan ML, Maru S, Brennan MF. Long-term results with resection of radiation-induced soft tissue sarcomas. *Ann Surg* 2004;239:903-9; Discussion 909-10.
3. Bjerkehagen B, Smeland S, Walberg L, Skjeldal S, Hall KS, Nesland JM, *et al.* Radiation-induced sarcoma: 25-year experience from the Norwegian Radium Hospital. *Acta Oncol* 2008;47:1475-82.
4. Inoue YZ, Frassica FJ, Sim FH, Unni KK, Petersen IA, McLeod RA. Clinicopathologic features and treatment of postirradiation sarcoma of bone and soft tissue. *J Surg Oncol*

- 2000;75:42-50.
5. Strauss PG, Schmidt J, Pedersen L, Erfle V. Amplification of endogenous proviral MuLV sequences in radiation- induced osteosarcomas. *Int J Cancer* 1988;41:616-21.
 6. Cahan WG, Woodard HQ, Higinbotham NL, Stewart FW, Coley B. Sarcoma arising in irradiated bone: Report of eleven cases. 1948. *Cancer* 1998;82:8-34.
 7. Kim JH, Chu FC, Woodard HQ, Melamed MR, Huvo A, Cantin J. Radiation-induced soft-tissue and bone sarcoma. *Radiology* 1978;129:501-8.
 8. Lagrange JL, Ramaioli A, Chateau M, Marchal C, Resbeut M, Richaud P, *et al.* Sarcoma after Radiation Therapy: Retrospective Multiinstitutional Study of 80 Histologically Confirmed Cases. *Radiology* 2000;216:197-205.
 9. Cahan WG. Radiation-induced sarcoma—50 years later. *Cancer* 1998;82:6-7.
 10. Kobayashi E, Kawai A, Seki K, Tateishi T, Beppu Y. Bilateral adrenal gland metastasis from malignant fibrous histiocytoma: Value of [F-18]FDG PET-CT for diagnosis of occult metastases. *Ann Nucl Med* 2006;20:695-8.
 11. Terashima K, Aoyama K, Nihei K, Nito T, Imai Y, Takahashi K, *et al.* Malignant fibrous histiocytoma of the heart. *Cancer* 1983;52:1919-26.
 12. Hiasa Y, Shimoyama T, Kitahori Y, Konishi N, Sakaguchi Y, Murata Y, *et al.* Malignant fibrous histiocytoma with widespread metastasis and pulmonary cancer. *Acta Pathol Jpn* 1986;36:113-22.
 13. Lam KY, Lo CY. Metastatic tumors of the adrenal glands: A 30-year experience in a teaching hospital. *Clin Endocrinol (Oxf)* 2002;56:95-101.

How to cite this article: Ganesan P, Kaushal S, Thulkar S, Bakhshi S. Adrenal metastases in a post-radiation malignant fibrous histiocytoma after low-dose radiation for a benign condition. *Indian J Med Paediatr Oncol* 2013;34:31-3.

Source of Support: Nil, **Conflict of Interest:** None declared.

Author Help: Reference checking facility

The manuscript system (www.journalonweb.com) allows the authors to check and verify the accuracy and style of references. The tool checks the references with PubMed as per a predefined style. Authors are encouraged to use this facility, before submitting articles to the journal.

- The style as well as bibliographic elements should be 100% accurate, to help get the references verified from the system. Even a single spelling error or addition of issue number/month of publication will lead to an error when verifying the reference.
- Example of a correct style
Sheahan P, O'leary G, Lee G, Fitzgibbon J. Cystic cervical metastases: Incidence and diagnosis using fine needle aspiration biopsy. *Otolaryngol Head Neck Surg* 2002;127:294-8.
- Only the references from journals indexed in PubMed will be checked.
- Enter each reference in new line, without a serial number.
- Add up to a maximum of 15 references at a time.
- If the reference is correct for its bibliographic elements and punctuations, it will be shown as CORRECT and a link to the correct article in PubMed will be given.
- If any of the bibliographic elements are missing, incorrect or extra (such as issue number), it will be shown as INCORRECT and link to possible articles in PubMed will be given.