

Stenosis of the Intestinal Wall Extending from the End of the Ileum to the Cecum and the Ascending Colon

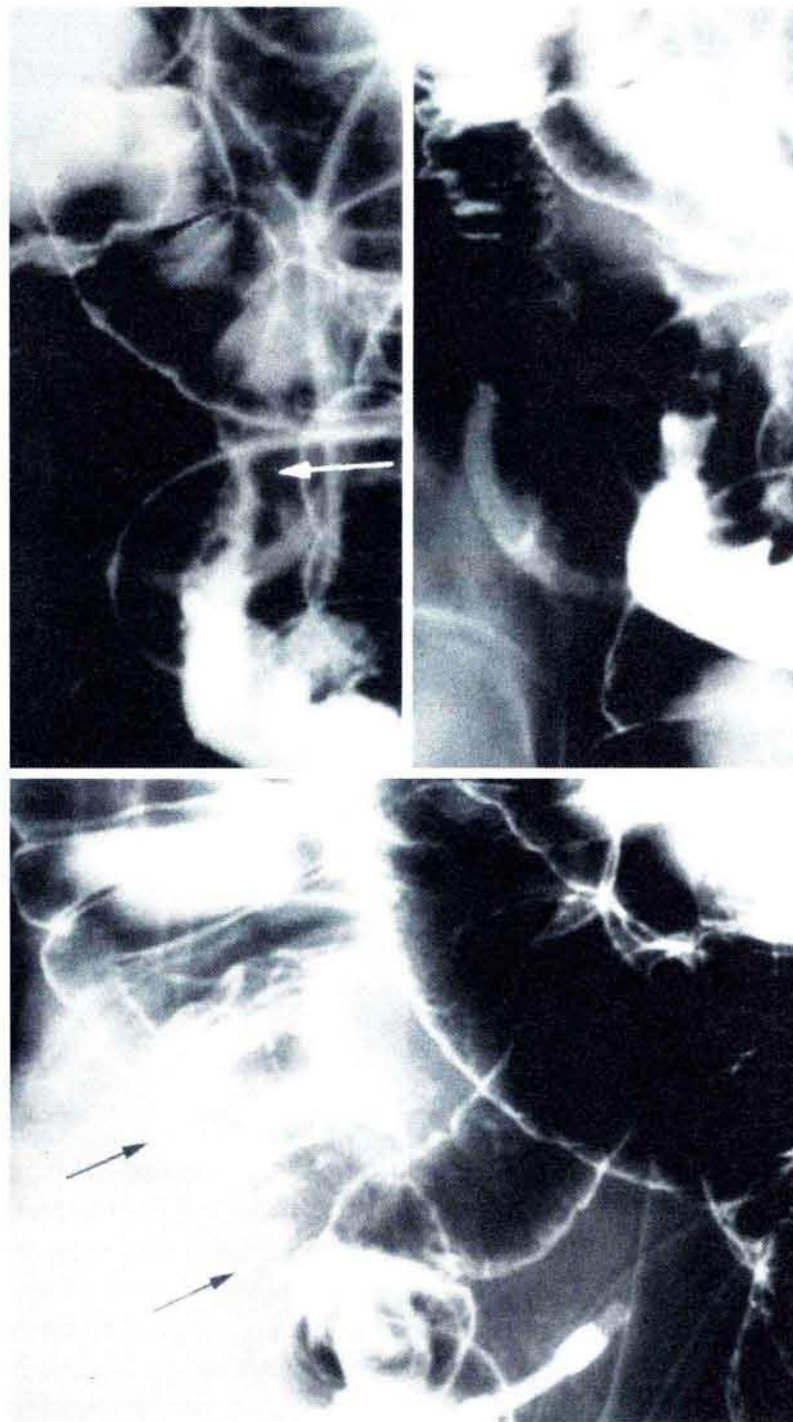
S. Yoshii¹, H. Hanai¹, F. Watanabe², H. Iwasaki², K. Sugimoto², R. Higuti², H. Kubota², H. Honda², E. Kaneko¹

¹ First Department of Medicine, Hamamatsu University School of Medicine, Hamamatsu, Shizuoka, Japan

² Department of Internal Medicine, Fujieda Municipal General Hospital, Fujieda, Shizuoka, Japan

Corresponding Author

Shigeto Yoshii, M.D.
 First Department of Medicine
 Hamamatsu University
 School of Medicine
 3600 Handa-cho
 Hamamatsu 431-31
 Japan
 Fax: +81-53-434-9447



A 63-year-old man with extremely rare diffuse infiltrative carcinoma of the colon originating in the cecum. A barium enema (Figure 1) showed a long narrowing lumen of the terminal ileum (white arrows), moderate obstruction of the cecum and the ascending colon (black arrows) and a lack of intraluminal mass or mucosal ulcers.

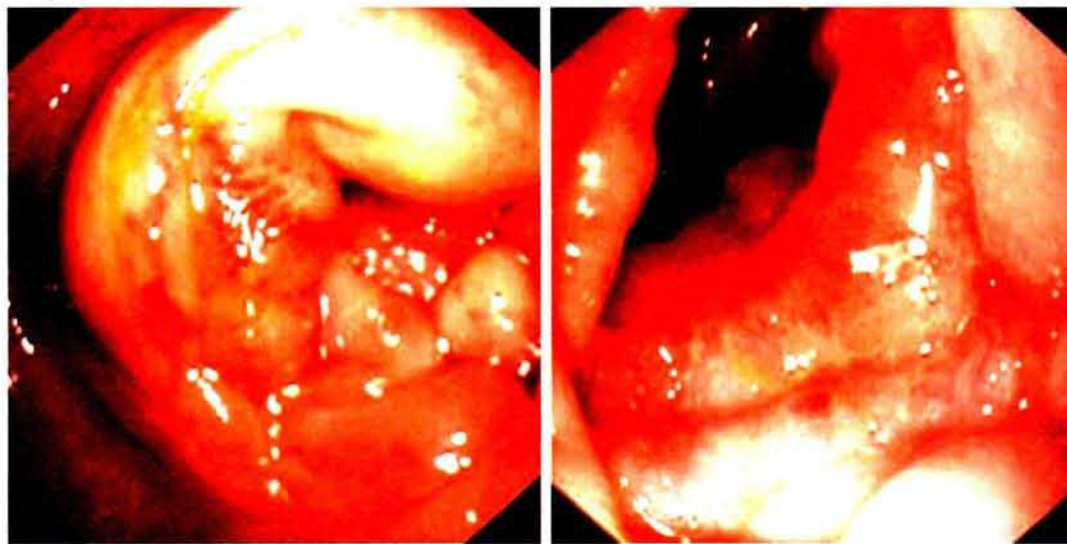


Figure 2 is an endoscopic view of the ascending colon demonstrating luminal narrowing with sporadic erosions and edema.