

## Endoscopic Diagnosis of Retrograde Jejunojejunal Intussusception

We reported here a case of postgastrectomy retrograde jejunojejunal intussusception in a patient with coffee-ground vomiting. The diagnosis was correctly made at endoscopy, and confirmed with contrast examination.

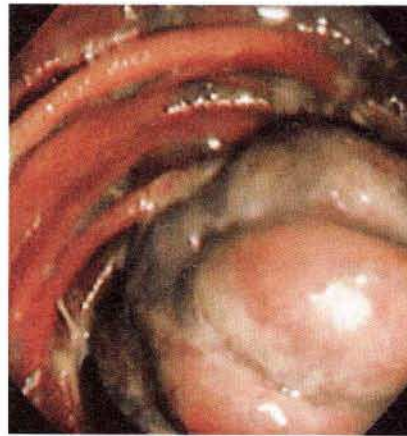
A 73-year-old man was admitted with acute onset of coffee-ground vomiting. He had undergone Polya gastrectomy eight years previously for upper gastrointestinal bleeding. At endoscopy, jejunojejunal intussusception was noted in the efferent limb; the jejunal mucosa was edematous (Figure 1). Water-soluble contrast was then injected via the endoscope. There was a "claw sign", with contrast stopping abruptly at the intussusceptum (Figure 2). At emergency laparotomy, the intussusception was reduced, and a nonviable segment of the jejunum was resected. Bowel continuity was restored with primary small-bowel anastomosis. The patient's recovery was uneventful. Pathologic examination of the resected jejunum did not reveal any cause for the intussusception.

Jejunojejunal intussusception is a rare complication after gastric surgery. It can present as an acute fulminant type, or a chronic relapsing type. Endoscopic diagnosis of the condition has been well described (1-3), and endoscopic reduction of jejunojejunal intussusception has been reported in a single case (4). The present case confirms that the diagnosis can be made at endoscopy. The role of endoscopic reduction, however, remains unproved. Due to the chronic relapsing nature of the condition and the subsequent risk of incarceration of the intussusceptum, surgery should be the primary treatment (5).

### References

1. Brown JW: Retrograde jejunojejunal intussusception confirmed pre-operatively by gastroscopy. *Gastrointest Endosc* 1970; 17: 70-1.
2. Domjan L, Baltas B. Chronic recurrent jejunojejunal intussusception diagnosed by gastroscopy. *Endoscopy* 1975; 7: 105-8.
3. Ertresvaag K, Haffnir JFW. Jejunojejunal intussusception, an acute exacerbation diagnosed by gastroscopy. *Endoscopy* 1981; 13: 131-3.
4. Kochhar R, Saxena R, Nagi B, et al. Endoscopic management of retrograde jejunojejunal intussusception. *Gastrointest Endosc* 1988; 34: 56-7.
5. Czerniak A, Bass A, Bat L, et al. Jejunojejunal intussusception. *Arch Surg* 1987; 122: 1191-2.

*D. W. H. Lee, J. Y. W. Lau, A. C. W. Chan, S. C. S. Chung,  
A. K. C. Li*  
Dept. of Surgery, Chinese University of Hong Kong,  
Prince of Wales Hospital, Hong Kong



**Figure 1:** Endoscopic view of the jejunum showing retrograde jejunojejunal intussusception.



**Figure 2:** Contrast study showing the "claw sign" (arrow).

*Corresponding Author*  
A. K. C. Li, M.D.  
Dept. of Surgery  
Chinese University of Hong Kong  
Prince of Wales Hospital  
Shatin  
Hong Kong  
Fax: +852-26370979