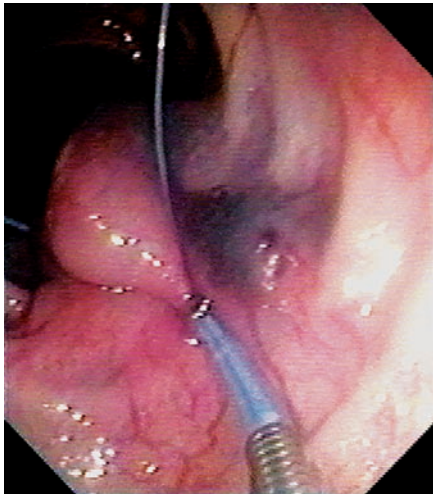
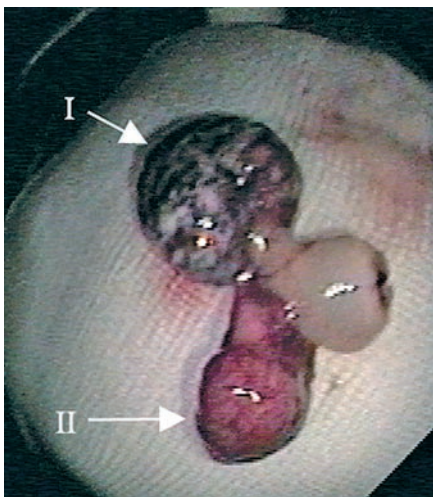


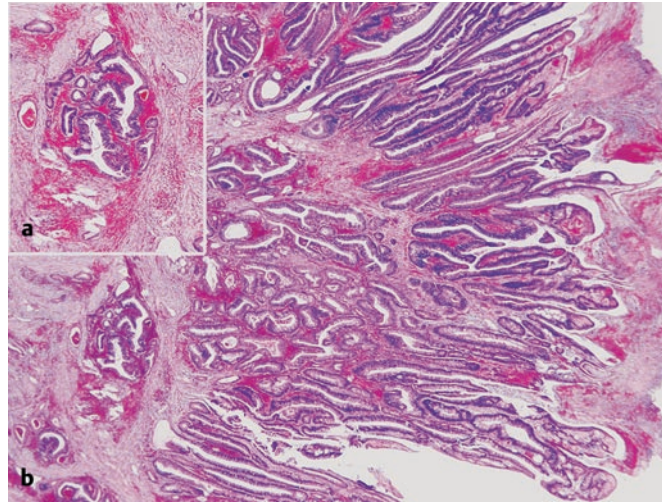
# A Janus-Headed Polyp: Adenoma and Carcinoma with a Single Stalk



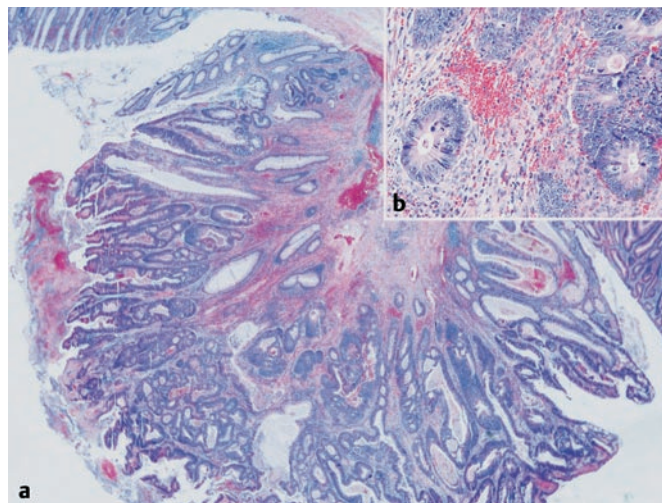
**Figure 1** A 70-year-old patient was admitted to hospital due to lower gastrointestinal bleeding from a biopsy site in a large polyp in the sigmoid colon. A polypectomy was performed after placement of an Endoloop. Histopathological examination revealed a tubular villous adenoma and an adenocarcinoma, with the two tumors growing out of a single pedicle.



**Figure 4** The resection specimen shows a two-headed polyp growing out of a single stalk. The first head (the adenocarcinoma, I) measured  $1.5 \times 1.5$  cm, the second head (the adenoma, II) was  $1.0 \times 1.0$  cm, and the pedicle was  $1.3 \times 0.7$  cm. So far as we are aware, this is the first description of an adenocarcinoma and an adenoma growing out of a single stalk. We have termed it "Janus-headed" after the Roman god Janus, the double-faced god of entrances and exits, whose image was often placed in doorways and who symbolized things that have two sides – a good one and a bad one.



**Figure 2** Microscopic examination of the first head showed that it was a highly differentiated adenocarcinoma with neoplastic glands in the muscularis mucosae (a), arising within an adenoma (b). There was a focus of invasion surrounded by desmoplasia (a). Periodic acid-Schiff, original magnification  $\times 200$  (a),  $\times 16$  (b).



**Figure 3** The second head consisted of a tubulovillous adenoma with high-grade dysplasia. The adenoma consisted of dysplastic tubular crypts, as well as finger-like structures, and had a gland-within-gland appearance without intervening stroma. **b** The dysplastic epithelium, with enlarged and stratified nuclei, extending into the upper third of the cells, with loss of polarity. Hematoxylin-eosin, original magnification  $\times 200$  (a),  $\times 16$  (b).

S. Gölder<sup>1</sup>, F. Bataille<sup>2</sup>, J. Schölmerich<sup>1</sup>, G. Rogler<sup>1</sup>

<sup>1</sup> Dept. of Internal Medicine I, University of Regensburg, Regensburg, Germany

<sup>2</sup> Dept. of Pathology, University of Regensburg, Regensburg, Germany

## Corresponding Author

G. Rogler, M.D., Ph. D.

Dept. of Internal Medicine I  
University Regensburg  
93042 Regensburg  
Germany

Fax: +49-941-944 7073

E-mail: gerhard.rogler@klinik.uni-regensburg.de