

# Acute Esophageal Necrosis (Black Esophagus): Endoscopic and Histopathologic Appearance

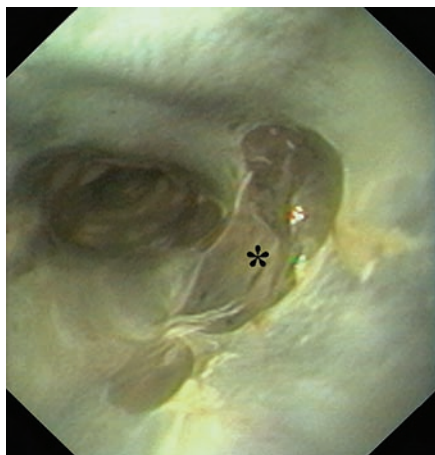


Figure 1 A 55-year-old woman in generally poor condition was admitted with life-threatening gastrointestinal bleeding. At endoscopy a dark diffuse black-greenish appearance was seen in the middle part of the esophagus. The necrotic esophageal mucosa was covered by pseudomembrane (asterisk) that could easily be removed by forceps.

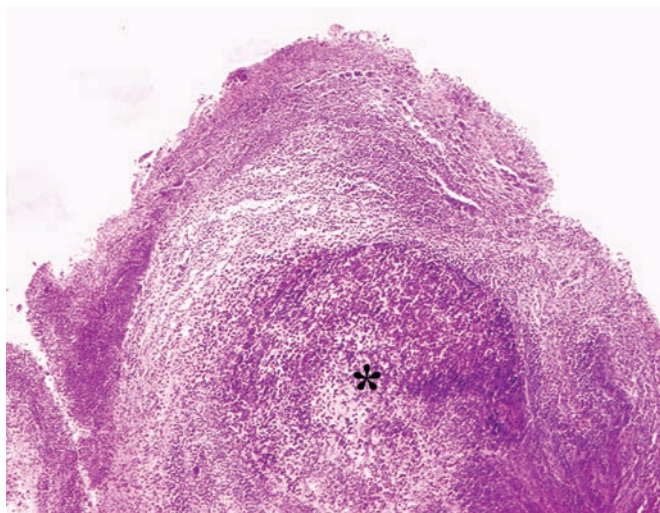


Figure 2 Mucosal and submucosal necrosis was found at histology (hematoxylin–eosin stain). Non-specific granuloma was seen at the centre (asterisk).

**S. Rejchrt<sup>1</sup>, T. Douda<sup>1</sup>, M. Kopáčová<sup>1</sup>,  
M. Šíroký<sup>1</sup>, R. Repák<sup>1</sup>, J. Nožička<sup>2</sup>,  
J. Špaček<sup>2</sup>, J. Bureš<sup>1</sup>**

<sup>1</sup> Clinical Centre, Second Department of Medicine, Charles University Teaching Hospital, Hradec Králové, Czech Republic

<sup>2</sup> The Fingerland Institute of Pathology, Charles University Teaching Hospital, Hradec Králové, Czech Republic

## Corresponding Author

**S. Rejchrt, M.D., Ph.D.**

Clinical Centre, Second Department of Medicine, Charles University Teaching Hospital  
Sokolská 408  
Hradec Králové  
50005 Czech Republic  
Fax: +420-495-832003  
E-mail: rejchrt@lfhk.cuni.cz



Figure 3 Appearance at control endoscopy after 3 months. Re-epithelialization had taken place in the proximal esophagus and circular ulceration covered with white fibrin was seen in the distal esophagus.

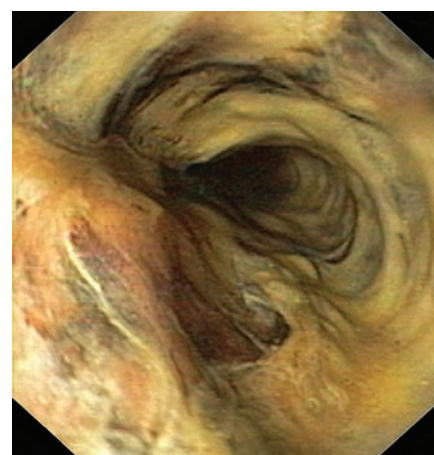


Figure 4 A 47-year-old man with relapse of cancer of the oral cavity. The patient was referred for percutaneous endoscopic gastrostomy (PEG) tube placement and an asymptomatic black esophagus was found.