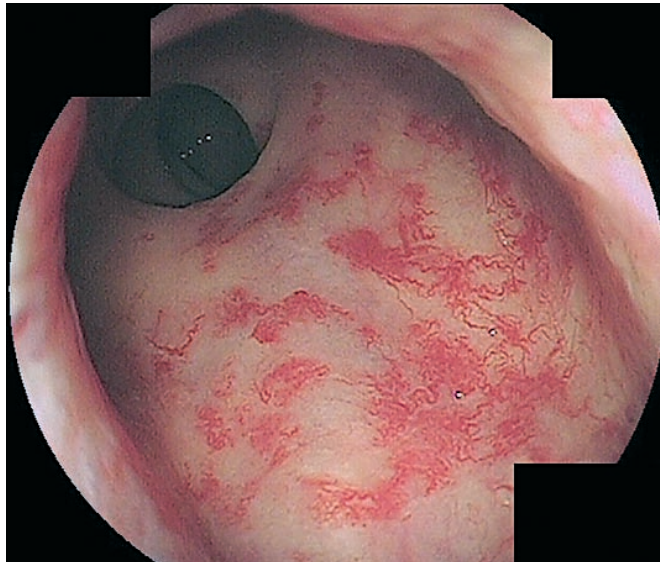


# Multiple Confluent Telangiectatic Lesions Following Radiation Treatment for Prostate Cancer

**Y. Komuro, T. Watanabe, H. Nagawa**  
Department of Surgical Oncology, Faculty of Medicine, University of Tokyo, Tokyo, Japan

## Corresponding Author

**Y. Komuro, M.D.**  
Department of Surgical Oncology  
Faculty of Medicine  
University of Tokyo  
7-3-1 Hongo  
Bunkyo-ku  
Tokyo 113-8655  
Japan  
Fax: +81-3-38116822  
E-mail: komuro@kt.rim.or.jp



**Figure 1** Endoscopic view of chronic radiation-induced proctitis. The anterior rectal mucosa appeared edematous and friable with multiple confluent neovascular telangiectatic lesions. The patient had been treated 3 years previously for prostate cancer, with a total dose of 60 Gy.