



SCL19A3 gene mutation with Leigh-like phenotype presentation: a potentially treatable disease

Mutação do gene SCL19A3 com apresentação do fenótipo Leigh: uma doença potencialmente tratável

Leonardo Furtado Freitas¹ Eduardo Carvalho Miranda² Thelma Ribeiro Noce^{3,4}
Aline Pimentel Amaro² Márcio Luís Duarte⁵

¹ McGill University, Department of Radiology, Division of Neuroradiology, Montreal QC, Canada.

² Rede MaterDei de Saúde, Departamento de Neuroradiologia, Belo Horizonte MG, Brazil.

³ Rede MaterDei de Saúde, Departamento de Neurologia Infantil, Belo Horizonte MG, Brazil.

⁴ Hospital Felício Rocho, Belo Horizonte MG, Brazil.

⁵ Universidade de Ribeirão Preto, Campus Guarujá, Guarujá SP, Brazil.

Address for correspondence: Leonardo Furtado Freitas (email: drleonardofurtado@gmail.com)

Arq. Neuropsiquiatr. 2023;81(11):1020–1021.

A two-month-old boy presented with breastfeeding difficulty, hypoactivity, hyporeactivity, and seizures. Neuroimaging showed multiple areas of cytotoxic and vasogenic edema in the midbrain, cerebellum, basal ganglia, and brain hemispheres, with lactate peak (► **Figure 1**). Exome sequencing revealed a heterozygous mutation c.597dup (p.His200Serfs*25) in the *SCL19A3* gene.

The *SCL19A3* gene encodes thiamine transporter-2. Mutations can result in thiamine metabolism dysfunction syndrome-2, and they can present as early as infantile Leigh-like syndrome,¹ a potentially treatable disease. This patient was submitted to thiamine and biotin replacement, but his evolution confirmed a poor prognosis (► **Figure 2**).² The poor outcome warrants genetic counseling for the families.

Authors' Contributions

LFF: conceptualization, formal analysis, investigation, validation, visualization, writing of the original draft,

and writing – review and editing; ECM: formal analysis, investigation, visualization, and writing – review & editing; TRN: formal analysis, funding acquisition, supervision, validation, and visualization; APA: investigation, supervision, validation, visualization, and writing of the original draft; MLD: validation, visualization, writing of the original draft, and writing – review and editing.

Conflict of Interest

The authors have no conflict of interest to declare.

References

- 1 Haack TB, Klee D, Strom TM, et al. Infantile Leigh-like syndrome caused by SLC19A3 mutations is a treatable disease. *Brain* 2014; 137(Pt 9):e295
- 2 Alfadhel M. Early Infantile Leigh-like SLC19A3 Gene Defects Have a Poor Prognosis: Report and Review. *J Cent Nerv Syst Dis* 2017; 9:1179573517737521

received

May 26, 2023

received in its final form

June 20, 2023

accepted

June 24, 2023

DOI <https://doi.org/10.1055/s-0043-1772606>.

ISSN 0004-282X.

© 2023. The Author(s).

This is an open access article published by Thieme under the terms of the Creative Commons Attribution 4.0 International License, permitting copying and reproduction so long as the original work is given appropriate credit (<https://creativecommons.org/licenses/by/4.0/>).

Thieme Revinter Publicações Ltda., Rua do Matoso 170, Rio de Janeiro, RJ, CEP 20270-135, Brazil

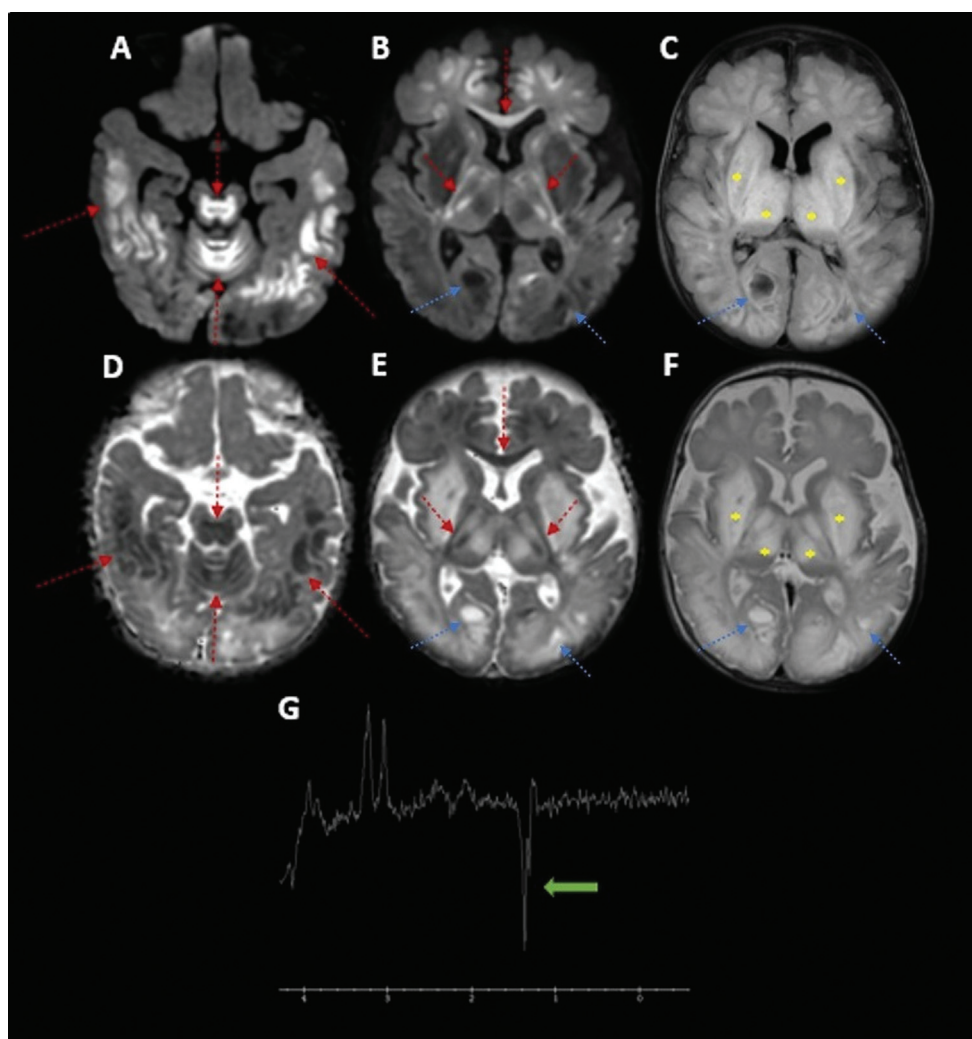


Figure 1 Brain magnetic resonance imaging (MRI) scan at two months of age. Axial diffusion (A,B); fluid-attenuated inversion recovery (FLAIR) (C); apparent diffusion coefficient (ADC) map (D,E); and T2-weighted imaging (F). Symmetric areas of cytotoxic (red arrows) and vasogenic (asterisk) edema in the midbrain, superior vermis, subcortical white matter of the cerebral hemispheres, genu of the corpus callosum, internal capsules, and basal ganglia, mainly in the putamina and thalami. There are also some cystic changes in the occipital lobes (blue arrows). Magnetic resonance spectroscopy (MRS) (G) with intermediate TE (144 ms) showing the lactate inverted peaks at 1.3 ppm chemical shift (green arrow).

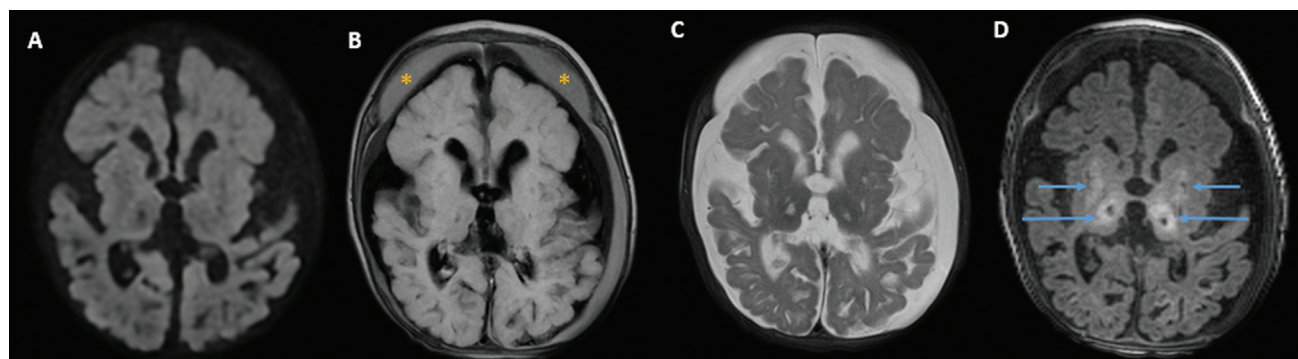


Figure 2 Two-month follow-up after treatment with biotin and thiamine. Axial diffusion (A); FLAIR (B); T2- (C) and T1-weighted (D) multiplanar gradient-recalled (MPGR) imaging. Resolution of the areas with restriction diffusion and interval encephalomalacia and necrosis in the basal ganglia bilaterally, mainly in the thalami (arrows). There is diffuse cerebral atrophy and holohemispheric subdural hematomas (asterisk), due to stretching of the bridging veins.