

W. ZHAO, B.-J. LI* (TSINGHUA UNIVERSITY, BEIJING AND NANKAI UNIVERSITY, TIANJIN, P. R. OF CHINA)

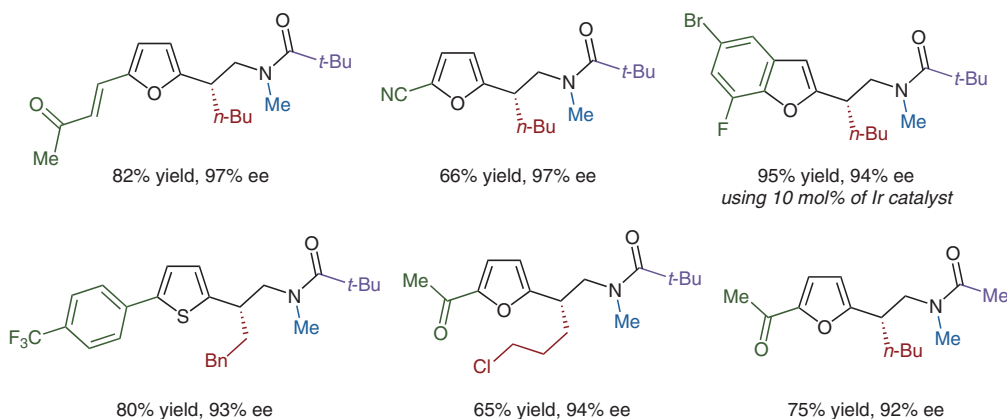
Directing Group Repositioning Strategy Enabled Site- and Enantioselective Addition of Heteroaromatic C–H Bonds to Acyclic Internal Alkenes

J. Am. Chem. Soc. **2023**, *145*, 6861–6870, DOI: 10.1021/jacs.3c00095.

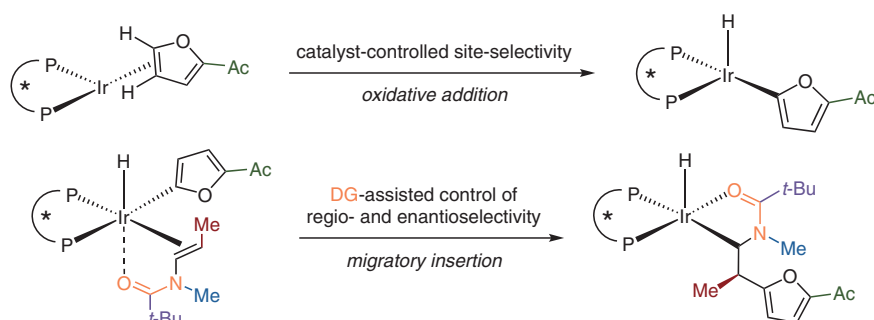
Ir-Catalyzed Regio- and Enantioselective Synthesis of β -Heteroaryl Amides via Site-Selective C–H Activation



Selected examples:



Key steps in the catalytic cycle:



Significance: The Li group reports the iridium-catalyzed addition of substituted furans and thiophenes to internal alkenes in a highly regio- and enantioselective fashion. This atom-economical methodology featuring a C–H metalation provides access to valuable chiral amides bearing a tertiary benzylic center, which were subjected to subsequent transformations.

Comment: DFT calculations were performed to explain the site-, regio- and enantioselectivity of the reaction. The enamide moiety acts as a directing group, guiding the C–H addition onto the more electron-rich position of the olefin. This reactivity is contrary to the more established regioselectivity of hydro(hetero)arylation processes. KIE studies revealed C–H bond cleavage constitutes the turnover-limiting step.

SYNFACTS Contributors: Mark Lautens, Xavier Abel-Snape
Synfacts 2023, 19(06), 0565 Published online: 11.05.2023
DOI: 10.1055/s-0042-1752500; Reg-No.: L07423SF

© 2023, Thieme. All rights reserved.
Georg Thieme Verlag KG, Rüdigerstraße 14, 70469 Stuttgart, Germany

Category

Metals in Synthesis

Key words

iridium catalysis

site-selectivity

regioselectivity

heteroaryl amides

directing group

Synfact
of the
Month

This document was downloaded for personal use only. Unauthorized distribution is strictly prohibited.