

Platelet to Lymphocyte Ratio and Neutrophil to Lymphocyte Ratio in Missed Abortion

Ismail Biyik¹  Mustafa Albayrak²  Fatih Keskin³ 

¹Department of Obstetrics and Gynecology, School of Medicine, Kütahya Health Sciences University, Kütahya, Turkey

²Department of Obstetrics and Gynecology, Florence Nightingale Hospital, Istanbul, Turkey

³Private Balkan Hospital, Edirne, Turkey

Address for correspondence Ismail Biyik, Department of Obstetrics and Gynecology, Karacabey State Hospital, Bursa, Turkey (e-mail: dribiyik@hotmail.com).

Rev Bras Ginecol Obstet 2020;42(5):235–239.

Abstract

Objective Missed abortion occurs in ~ 15% of all clinical pregnancies. The pathogenesis is not clearly known. However, defective placentation resulting in maternal systemic inflammatory response is considered responsible for missed abortion. Platelet lymphocyte ratio (PLR) and neutrophil lymphocyte ratio (NLR) are increasingly cited parameters of inflammation in the literature. However, no study evaluated the PLR and NLR rates in missed abortions so far. The aim of the present study is to investigate whether complete blood count (CBC) inflammatory parameters such as NLR and PLR are increased in patients with missed abortion.

Methods Medical records of 40 pregnant women whose gestation ended in missed abortion at between 6 and 14 weeks of gestation and of 40 healthy pregnant women were collected and compared retrospectively. The groups were compared regarding hemoglobin, hematocrit, platelet count (PLT), mean platelet volume (MPV), platelet distribution width (PDW), PLR and NLR.

Results Platelet distribution width, NLR and PLR values were higher in the missed abortion group compared with the healthy pregnant women group (rates are $p = 0.043$; $p = 0.038$; and $p = 0.010$, respectively). Hematocrit, MPV, and lymphocyte values were found to be lower in the missed abortion group compared with the healthy pregnant women group ($p = 0.027$, $p = 0.044$ and $p = 0.025$, respectively).

Conclusion The PDW, NLR and PLR values of the missed abortion group were reported high; and MPV values were reported low in the present study. These findings may help to speculate a defective placentation in the pathogenesis of missed abortion.

Keywords

- ▶ missed abortion
- ▶ platelet to lymphocyte ratio
- ▶ neutrophil to lymphocyte ratio
- ▶ inflammation

Introduction

Missed abortion is defined as an embryonic part of the pregnancy left in the uterus after embryonic or fetal death. A total of 15% of all clinically diagnosed pregnancies result in abortion (miscarriage).¹ Almost all of the 1st trimester pregnancy losses occur following missed abortion.² It is thought that chromosomal anomalies, immunological causes, uterine anomalies, endocrine causes and infections are responsible for

the etiopathogenesis of missed abortion. However, the exact cause is not known. There are studies reporting that missed abortion may develop due to defective placentation with resultant maternal systemic inflammatory response.^{3–7} It is known that serum inflammatory cytokines interleukin 2 (IL-2), interleukin 12 (IL-12) and tumor necrosis factor α (TNF- α) increase in patients with missed abortion.^{8,9}

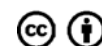
Platelet count (PLT), mean platelet volume (MPV), platelet distribution width (PDW), platelet lymphocyte ratio (PLR)

received
August 6, 2019
accepted
March 2, 2020

DOI <https://doi.org/10.1055/s-0040-1709693>.
ISSN 0100-7203.

Copyright © 2020 by Thieme Revinter Publicações Ltda, Rio de Janeiro, Brazil

License terms



and neutrophil lymphocyte ratio (NLR) are the parameters of complete blood count (CBC) for inflammation and/or ischemia. Neutrophil lymphocyte ratio is the ratio of absolute neutrophil count to the absolute lymphocyte count. It is regarded as a marker of the immune response of the body to offending agents. It is also regarded as a rapid and simple parameter indicative of systemic inflammation and stress.¹⁰ Platelet lymphocyte ratio is another parameter known to increase during thrombosis and inflammation.¹¹ Mean platelet volume has been associated with thrombocyte volume, function, and activation and its increase is associated with the presence and prognosis of vascular disease, including peripheral, cerebrovascular, and coronary artery disease.^{12,13} Along with MPV, platelet distribution width (PDW) is a marker of platelet activation.¹⁴ It is generally accepted that thrombocyte volume is determined during the production of thrombocytes from megakaryocytes.¹⁵ Larger thrombocytes are younger and less reactive.¹⁶

Some studies claim that pre-eclampsia and miscarriage (missed abortion) are similarly placenta-related diseases culminating in placental dysfunction, since both diseases have a common inflammatory component.¹⁷ Inflammatory markers such as NLR, PLR and MPV values are reported to increase in pre-eclampsia.¹⁸ Oylumlu et al¹⁹ claimed NLR as a prognostic marker to determine the systemic inflammatory response increase in pre-eclampsia. Therefore, we investigated whether the increase of these mediators are associated with missed abortion. However, to the best of our knowledge, no study evaluated NLR and PLR parameters in missed abortion so far.

The aim of the present study is to investigate whether CBC inflammatory parameters such as NLR and PLR are increased in patients with missed abortion.

Methods

Ethical approval was obtained from the Ethics Committee of the SBU Bursa Yuksek Ihtisas Education and Research Hospital for this retrospective case-control study (2011-KAEK-25 2019/03-04). Permission was obtained from the patients for the study. The study was conducted in accordance with the Helsinki Declaration Principles. A total of 40 missed abortion patients and 40 matched healthy pregnant women at < 14 weeks of gestation admitted to the Gynecology and Obstetrics Clinic of the Bursa Karacabey State Hospital between January 2015 and December 2018 were included in the study. Demographic data such as age, previous gestations, parity, number of living children, height and weight were recorded.

A total of 80 women between the ages of 17 and 42 years old in between 6^{0/7} and 13⁺⁶ gestational week were included in the study. Missed abortion diagnosis was accepted as the loss of fetal heartbeat in a pregnant woman before the 14th gestational week whose intrauterine fetal heart rate was detected previously. Additionally, women who had active vaginal bleeding with at least 6 weeks of pregnancy in which the heartbeat was undetectable were also accepted as missed abortion. Women with thyroid dysfunction, diabetes mellitus, hematologic disease, history of thrombosis, systemic lupus erythematosus, multiple pregnancy, smoking habits, active infection, malig-

nancy, chronic inflammatory diseases (such as arthritis) or those on anti-inflammatory drugs or glucocorticoids were excluded from study. Those with detectable pathologies claimed to be involved in missed abortion pathophysiology, such as uterine anomalies, were excluded from the study. To eliminate the effect of obesity, only those with a body mass index (BMI) of < 25 kg / m² were included in the study. Those with anembryonic pregnancy were excluded from the study.

Gestational age was determined based on the last menstrual period, which was confirmed by crown rump length (CRL) measurement on abdominal or transvaginal ultrasound. If the last menstrual period was uncertain or a discrepancy of > 1 week was detected between the last menstrual period or CRL measurement, the latter was accepted as true. Ultrasound imaging was performed by the same sonographer with the same device (Medison X8 Sonoace, Samsung Medison, Seoul, South Korea). All of the images were obtained by a 3.5 MHz convex transabdominal transducer or a 5 MHz vaginal probe was used when abdominal diagnosis could not be made reliably.

Laboratory Parameters

Laboratory parameters such as hemoglobin, hematocrit, PLT, MPV, PDW, PLR, and NLR were recorded. Blood samples were drawn from the antecubital vein and collected in tubes containing ethylene diamine tetra acetic acid (K3EDTA). In the missed abortion group, blood was taken immediately after the diagnosis. The complete blood count was analyzed in an automatic full blood count machine (Cell-Dyn 3700, Abbott, Chicago, IL, USA).

Statistical Analysis

Continuous variables were expressed as mean \pm standard deviation (SD) or median (minimum: maximum) values. Categorical variables were expressed as n (%). The chi-squared test was used to compare categorical variables between groups. The independent *t*-test was used to compare continuous variables between groups. For statistical analysis, SPSS Statistics for Windows, Version 21.0 (IBM Corp., Armonk, NY, USA) was used. A *p*-value < 0.05 was considered statistically significant. A receiver operating characteristic (ROC) curve was constructed to determine the cutoff values of PDW and PLR for the diagnosis of missed abortion.

Results

The two groups were similar in terms of maternal age, gestational age, body weight, BMI, gravidity, parity and number of living children (*p* > 0.005). The number of previous abortions was higher in the missed abortion group (*p* < 0.0001) (– **Table 1**).

Hemoglobin, platelet and neutrophil values were similar between the groups (*p* > 0.005). Platelet distribution width, NLR, and PLR values were higher in the missed abortion group (*p* = 0.043, *p* = 0.038 and *p* = 0.010, respectively). Hematocrit, MPV, and lymphocyte values of missed abortion patients were

Table 1 Demographic parameters of groups

Variables	Missed abortion (n = 40)	Healthy pregnant (n = 40)	p-value
Age (years old)	29.27 ± 6.84	28.37 ± 5.13	0.508
Weight (kg)	66.54 ± 14.39	68.61 ± 15.89	0.543
Height (cm)	161.60 ± 6.67	162.72 ± 6.64	0.452
BMI (kg/m ²)	25.47 ± 5.34	25.89 ± 5.71	0.732
Gravidity	2 (1–7)	2 (1–13)	0.557
Parity	1 (0–4)	1 (0–7)	0.440
History of abortion	1 (1–4)	0 (0–5)	< 0.0001
Living child	1 (0–4)	1 (0–5)	0.477
GA(days)	54.82 ± 11.54	54.12 ± 12.04	0.791

Abbreviations: BMI, Body mass index; GA, Gestational age.

Table 2 Hematologic parameters of groups

Variables	Missed abortion (n = 40)	Healthy pregnant (n = 40)	p-value
Hemoglobin (g/dL)	12.62 ± 1.18	12.19 ± 0.96	0.075
Hematocrit (%)	38.11 ± 3.10	36.66 ± 2.64	0.027
Platelet (10 ³ / μl)	256.50 ± 76.27	253.63 ± 66.38	0.858
MPV (fl)	9.07 ± 1.48	9.72 ± 1.33	0.044
PDW (%)	16.65 ± 0.79	16.30 ± 0.73	0.043
Neutrophil (10 ³ / μl)	5.34 ± 1.89	5.30 ± 1.39	0.909
Lymphocyte (10 ³ / μl)	1.81 ± 0.57	2.13 ± 0.69	0.025
NLR	3.22 ± 1.69	2.60 ± 0.74	0.038
PLR	154.15 ± 66.85	123.72 ± 30.09	0.010

Abbreviations: MPV, mean platelet volume; NLR, neutrophil to lymphocyte ratio; PDW, platelet distribution width; PLR, platelet to lymphocyte ratio.

found to be lower compared with controls ($p = 0.027$, $p = 0.044$ and $p = 0.025$, respectively) (► **Table 2**).

Receiver operating characteristic analysis was performed to determine diagnostic PDW and PLR values for missed abortion. A PDW value > 16.35 determined missed abortion with 70% sensitivity and 62.5% specificity. A PLR value > 123.14 determined miscarriage with 62.5% sensitivity and 55% specificity (► **Fig. 1**).

Discussion

The human fetus develops in a low-oxygen environment during the early stages of pregnancy. To maintain a low oxygen concentration, extravillous trophoblasts invade the uterine tissues and form a shell cell barrier into the ends of

the uteroplacental arteries.²⁰ This barrier protects the placenta during the early stages of pregnancy from the detrimental effects of free oxygen radicals formed as a result of early and excessive blood flow due to maternal circulation.²¹ Increased oxygen radicals cause necrosis and apoptosis in the placental villous tree of the trophoblast epithelium.¹⁷ Additionally, lipid peroxidation, which is also detrimental to invading trophoblastic tissue, also takes place in the placenta due to increased free oxygen radicals. Lipid peroxidation activates the cascade of biochemical events that causes leukocyte activation, adhesion and aggregation of platelets.¹⁷ Leukocyte activation causes an increase in inflammation parameters in blood and thrombosis resulting in ischemia of gestational tissues, which hinders the further development of the placenta. As a result of this defective placentation, maternal systemic inflammatory response increases as reflected in increased PLR and NLR.²²

Studies on NLR, PLR and MPV have grown recently following the discovery of their immense values in the prediction and prognosis of many medical conditions. These parameters are potent markers of inflammation that underlies the basic pathologies of various diseases. The rapid availability of these parameters without additional costs to the patients may gradually replace the older markers of inflammation.

Jauniaux et al¹⁷ reported that the preeclampsia and loss of pregnancy (missed abortion) were placenta-related disease. In preeclampsia, inflammation and oxidative stress biomarkers increase in maternal blood.²³ Among these increased inflammatory CBC markers, such as NLR, PLR, PDW and MPV, were shown to be elevated in pre-eclampsia.^{18,19,24–27} The same model may also apply to missed abortion.

In the present study, PDW, NLR and PLR values of the missed abortion group were reported higher, and MPV values were reported lower compared with controls. We found only one study reporting the decrease in MPV in abortion. However, as far as we know, no study reported an increase in MPV in abortion compared with controls in the literature. Kosus et al²⁸ found similar MPV values between healthy pregnant women and women with missed abortion. Bas et al²⁹ found that MPV and PLR levels in the spontaneous abortion group were low; neutrophil, lymphocyte, NLR values were high in the same group. Eroglu et al³⁰ reported no difference in MPV values between healthy pregnant women and women with missed abortion. However, to the best of our knowledge, there is no study to report PDW, NLR and PLR values in missed abortion compared with controls.

Our findings of high PDW, NLR and PLR values in missed abortion patients support the idea that claims a similarity between the ethiopathogenesis of missed abortion and preeclampsia. Increased NLR and PLR values in missed abortion may be the reflection of an increased maternal systemic response due to placentation disorder and trophoblast injury in the early stages of pregnancy, similar to pre-eclampsia. Likewise, we also think that high PDW values are a reflection of increased endothelial damage and risk of thrombosis as a result of defective placentation, a process similar to preeclampsia. It was previously shown that there is an increase in systemic inflammatory markers with increased TNF- α ,

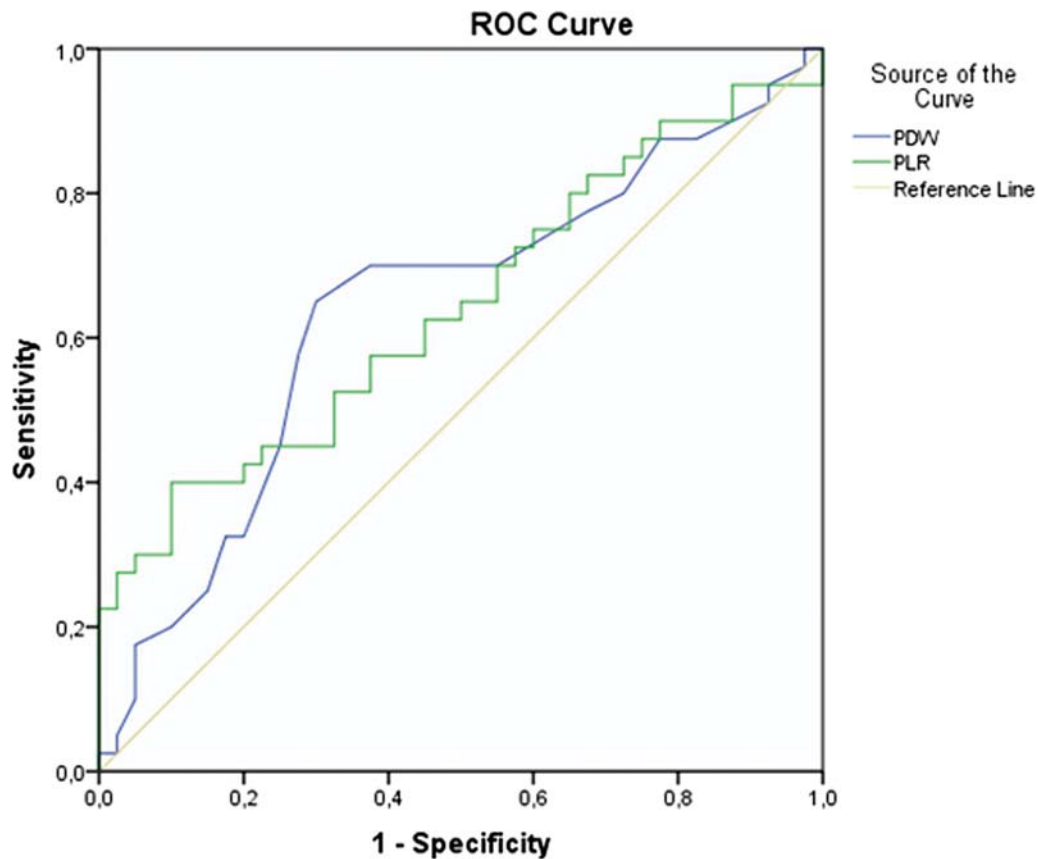


Fig. 1 ROC curve analysis of complete blood count parameter for the determination of the diagnosis of missed abortion.

interferon gamma and IL-2, IL-6, IL-10 and IL-12 levels in missed abortion.^{8,9,31,32} The investigation of cytokines is expensive compared with the CBC parameters. However, CBC is almost routinely requested in the evaluation of missed abortion and does not add up additional cost if the CBC parameters may have any place. Experimental therapies directed at increased inflammatory response are investigated in pre-eclampsia,³³ but no similar study was conducted for missed abortion. We think that our study may be another clue that increased inflammatory responses are operative in missed abortion. However, detailed and elaborative studies are needed to speculate that this inflammatory response may be an indirect sign of defective placentation in missed abortion as in the case of pre-eclampsia.

Conclusion

In the present study, increased PDW, NLR and PLR and decreased MPV values in missed abortion were found compared with controls, which supports increased maternal systemic inflammatory response.

Contributors

All of the authors participated in the concept and design of the present study; analysis and interpretation of data; drafting or revising of the manuscript, and they have approved the manuscript as submitted. All authors are responsible for the reported research.

Conflict of Interests

The authors have no conflict of interests to declare.

References

- 1 Wilcox AJ, Weinberg CR, O'Connor JF, Baird DD, Schlatterer JP, Canfield RE, et al. Incidence of early loss of pregnancy. *N Engl J Med*. 1988; 319(04):189–194. Doi: 10.1056/NEJM198807283190401
- 2 Cunningham FG, Leveno KJ, Bloom SL, Spong CY, Dashe JS, Hoffman BL, et al. Abortion. In: Cunningham FG, Leveno KJ, Bloom SL, Spong CY, Dashe JS, Hoffman BL, et al. *Williams obstetrics*. 24th ed. New York: McGraw Hill; 2014:350–351
- 3 Kim YM, Bujold E, Chaiworapongsa T, Yoon BH, Thaler HT, Rotmensch S, Romero R. Failure of physiologic transformation of the spiral arteries in patients with preterm labor and intact membranes. *Am J Obstet Gynecol*. 2003;189(04):1063–1069. Doi: 10.1067/S0002-9378(03)00838-X
- 4 Ozturk O, Bhattacharya S, Saridogan E, Jauniaux E, Templeton A. Role of utero-ovarian vascular impedance: predictor of ongoing pregnancy in an IVF-embryo transfer programme. *Reprod Biomed Online*. 2004; 9(03):299–305. Doi: 10.1016/s1472-6483(10)62145-1
- 5 Hustin J, Jauniaux E, Schaaps JP. Histological study of the materno-embryonic interface in spontaneous abortion. *Placenta*. 1990;11 (06):477–486. Doi: 10.1016/s0143-4004(05)80193-6
- 6 Hempstock J, Jauniaux E, Greenwold N, Burton GJ. The contribution of placental oxidative stress to early pregnancy failure. *Hum Pathol*. 2003;34(12):1265–1275. Doi: 10.1016/j.humpath.2003.08.006
- 7 Jauniaux E, Burton GJ. Pathophysiology of histological changes in early pregnancy loss. *Placenta*. 2005;26(2-3):114–123. Doi: 10.1016/j.placenta.2004.05.011
- 8 Gücer F, Balkanlı-Kaplan P, Yüksel M, Sayin NC, Yüce MA, Yardim T. Maternal serum levels of tumor necrosis factor-alpha and

- interleukin-2 receptor in threatened abortion: a comparison with normal and pathologic pregnancies. *Fertil Steril*. 2001;76(04):707–711. Doi: 10.1016/s0015-0282(01)02002-7
- 9 Paradisi R, Porcu E, Venturoli S, Maldini-Casadei M, Boni P. Maternal serum levels of pro-inflammatory cytokines in missed and threatened abortion. *Am J Reprod Immunol*. 2003;50(04):302–308. Doi: 10.1034/j.1600-0897.2003.00065.x
 - 10 Zahorec R. Ratio of neutrophil to lymphocyte counts—rapid and simple parameter of systemic inflammation and stress in critically ill. *Bratisl Lek Listy*. 2001;102(01):5–14
 - 11 Çakıroğlu Y, Vural F, Vural B. The inflammatory markers in polycystic ovary syndrome: association with obesity and IVF outcomes. *J Endocrinol Invest*. 2016;39(08):899–907. Doi: 10.1007/s40618-016-0446-4
 - 12 Vizioli L, Muscari S, Muscari A. The relationship of mean platelet volume with the risk and prognosis of cardiovascular diseases. *Int J Clin Pract*. 2009;63(10):1509–1515. Doi: 10.1111/j.1742-1241.2009.02070.x
 - 13 Bath PM, Butterworth RJ. Platelet size: measurement, physiology and vascular disease. *Blood Coagul Fibrinolysis*. 1996;7(02):157–161
 - 14 Jagroop IA, Clatworthy I, Lewin J, Mikhailidis DP. Shape change in human platelets: measurement with a channelyzer and visualisation by electron microscopy. *Platelets*. 2000;11(01):28–32. Doi: 10.1080/09537100075760
 - 15 Martin J. The relationship between megakaryocyte ploidy and platelet volume. *Blood Cells*. 1989;15(01):108–121
 - 16 van der Loo B, Martin JF. Megakaryocytes and platelets in vascular disease. *Baillieres Clin Haematol*. 1997;10(01):109–123. Doi: 10.1016/s0950-3536(97)80053-4
 - 17 Jauniaux E, Poston L, Burton GJ. Placental-related diseases of pregnancy: Involvement of oxidative stress and implications in human evolution. *Hum Reprod Update*. 2006;12(06):747–755. Doi: 10.1093/humupd/dml016
 - 18 Yücel B, Ustun B. Neutrophil to lymphocyte ratio, platelet to lymphocyte ratio, mean platelet volume, red cell distribution width and plateletcrit in preeclampsia. *Pregnancy Hypertens*. 2017;7:29–32. Doi: 10.1016/j.preghy.2016.12.002
 - 19 Oylumlu M, Ozler A, Yildiz A, Oylumlu M, Acet H, Polat N, et al. New inflammatory markers in pre-eclampsia: echocardiographic epicardial fat thickness and neutrophil to lymphocyte ratio. *Clin Exp Hypertens*. 2014;36(07):503–507. Doi: 10.3109/10641963.2013.863324
 - 20 Burton GJ, Woods AW, Jauniaux E, Kingdom JC. Rheological and physiological consequences of conversion of the maternal spiral arteries for uteroplacental blood flow during human pregnancy. *Placenta*. 2009;30(06):473–482. Doi: 10.1016/j.placenta.2009.02.009
 - 21 Jauniaux E, Hempstock J, Greenwold N, Burton GJ. Trophoblastic oxidative stress in relation to temporal and regional differences in maternal placental blood flow in normal and abnormal early pregnancies. *Am J Pathol*. 2003;162(01):115–125. Doi: 10.1016/S0002-9440(10)63803-5
 - 22 Mihi D, Razvan C, Malutan A, Mihaela C. Evaluation of maternal systemic inflammatory response in preeclampsia. *Taiwan J Obstet Gynecol*. 2015;54(02):160–166. Doi: 10.1016/j.tjog.2014.03.006
 - 23 Ferguson KK, Meeker JD, McElrath TF, Mukherjee B, Cantonwine DE. Repeated measures of inflammation and oxidative stress biomarkers in preeclamptic and normotensive pregnancies. *Am J Obstet Gynecol*. 2017;216(05):527.e1–527.e9. Doi: 10.1016/j.ajog.2016.12.174
 - 24 Gogoi P, Sinha P, Gupta B, Fimal P, Rajaram S. Neutrophil-to-lymphocyte ratio and platelet indices in pre-eclampsia. *Int J Gynaecol Obstet*. 2019;144(01):16–20. Doi: 10.1002/ijgo.12701
 - 25 Gezer C, Ekin A, Ertas IE, Ozeren M, Solmaz U, Mat Emre, Taner CE, et al. High first-trimester neutrophil-to-lymphocyte and platelet-to-lymphocyte ratios are indicators for early diagnosis of pre-eclampsia. *Ginekol Pol*. 2016;87(06):431–435. Doi: 10.5603/GP.2016.0021
 - 26 Serin S, Avcı F, Ercan O, Köstü B, Bakacak M, Kiran H. Is neutrophil/lymphocyte ratio a useful marker to predict the severity of pre-eclampsia? *Pregnancy Hypertens*. 2016;6(01):22–25. Doi: 10.1016/j.preghy.2016.01.005
 - 27 Kurtoglu E, Kokcu A, Celik H, Tosun M, Malatyalioglu E. May ratio of neutrophil to lymphocyte be useful in predicting the risk of developing preeclampsia? A pilot study. *J Matern Fetal Neonatal Med*. 2015;28(01):97–99. Doi: 10.3109/14767058.2014.905910
 - 28 Kosus N, Kosus A, Yildirim M, Duran M, Turhan NO. Mean platelet volume as a marker of thrombosis in patients with missed abortion. *Acta Haematol*. 2011;125(04):208–209. Doi: 10.1159/000322943
 - 29 Bas FY, Tola EN, Sak S, Cankaya BA. The role of complete blood inflammation markers in the prediction of spontaneous abortion. *Pak J Med Sci*. 2018;34(06):1381–1385. Doi: 10.12669/pjms.346.15939
 - 30 Eroglu M, Keskin U, Yildirim AO, Saygi IA, Gun I, Topuz S. Can mean platelet volume predict abortion? *Med Glas (Zenica)*. 2013;10(02):283–287
 - 31 Calleja-Agius J, Jauniaux E, Pizzey AR, Muttukrishna S. Investigation of systemic inflammatory response in first trimester pregnancy failure. *Hum Reprod*. 2012;27(02):349–357. Doi: 10.1093/humrep/der402
 - 32 Prins JR, Gomez-Lopez N, Robertson SA. Interleukin-6 in pregnancy and gestational disorders. *J Reprod Immunol*. 2012;95(1–2):1–14. Doi: 10.1016/j.jri.2012.05.004
 - 33 Rolnik DL, Wright D, Poon LCY, Syngelaki A, O’Gorman N, de Paco Matallana C, et al. ASPRE trial: performance of screening for preterm pre-eclampsia. *Ultrasound Obstet Gynecol*. 2017;50(04):492–495. Doi: 10.1002/uog.18816