



# Imaging Spectrum of Pediatric Nonspecific Aortoarteritis on CT Angiography: A Retrospective Study

Ashish Verma<sup>1</sup> Ishan Kumar<sup>1</sup> Priyanka Aggarwal<sup>2</sup> Ram C. Shukla<sup>1</sup>

<sup>1</sup>Department of Radiodiagnosis and Imaging, Institute of Medical Sciences, Banaras Hindu University, Varanasi, India

<sup>2</sup>Department of Paediatrics, Institute of Medical Sciences, Banaras Hindu University, Varanasi, India

**Address for correspondence** Ishan Kumar, MBBS, MD, DNB, Department of Radiodiagnosis and Imaging, Institute of Medical Sciences, Banaras Hindu University, Varanasi 221005, India (e-mail: ishanjd@gmail.com).

Ann Natl Acad Med Sci (India) 2019;55:145–150

## Abstract

**Introduction** Takayasu's arteritis, a chronic, idiopathic, inflammatory panarteritis, is the major cause of Aortoarteritis in pediatric age group. The purpose of this study is to analyze the patterns of involvement and imaging findings of pediatric Takayasu's arteritis.

**Materials and Methods** We retrospectively reviewed the CT angiographic images of 11 pediatric cases reported as "Takayasu's arteritis" or "nonspecific arteritis" over the period of last 3 years.

**Results** Mural thickening with luminal stenosis was the most common findings. Aneurysmal dilatation of the descending thoracic aorta was observed in one case. Vessel stenoses without mural thickening, thrombosis and collateral vessel formation were the other findings. Pattern of involvement ranged from variable involvement of thoracic and abdominal aorta and their branches.

**Conclusion** Awareness of its CT angiographic appearances and distribution pattern can help the clinicians and radiologists to have high index of suspicion in aiding early diagnosis and better management of this disease

## Keywords

- ▶ Takayasu's arteritis
- ▶ pediatric
- ▶ nonspecific aortoarteritis
- ▶ CT angiography

## Introduction

Aortoarteritis, is a blanket term that accommodates a wide array of infectious and noninfectious inflammatory conditions which involve aorta and its major branches. The multitude and nonspecific nature of its clinical symptoms often lead to delayed diagnosis and thereby compromised management of these patients. Large vessel vasculitides such as Takayasu disease and giant cell arteritis are the major noninfectious causes; however, other collagen vascular diseases such as rheumatoid arthritis and ankylosing spondylitis also can lead to aortoarteritis. Infectious aortitis was usually a complication of infectious endocarditis in preantibiotic era. Aorta is normally very resistant to infection and infectious aortitis is nowadays usually associated with pre-existing aortic aneurism, diabetes, cystic medial necrosis, or surgery. *Staphylococcus aureus*, salmonella species, and tuberculosis are the usual culprits.<sup>1</sup> Takayasu's

arteritis, a chronic, idiopathic, inflammatory panarteritis, is the major cause of aortoarteritis in pediatric age group. In children, it is the most common cause of renovascular hypertension.<sup>2</sup> The disease is common in India which befits its proposed causal association with tuberculosis. The nature of this association is however not completely understood yet. In 1994 the Takayasu Conference in Tokyo proposed an angiographic classification, which divides the disease in six subgroups (▶ **Table 1**). In addition, an appendage of a "C+" or "P+" was used to denote coronary or pulmonary involvement.<sup>3,4</sup>

Ultrasound with Color Doppler is the first diagnostic modality used for screening of the disease which can assess branches of aortic arch, abdominal aorta, and its branches and can show downstream flow changes in the extremities. Conventional angiography has been traditionally considered gold standard for diagnosis.<sup>5</sup> However, they have been largely replaced by noninvasive modalities such as CT angiography

DOI <https://doi.org/10.1055/s-0039-1697238>  
ISSN 0379-038X.

©2019 National Academy of Medical Sciences (India)

License terms



**Table 1** Angiographic classification of Takayasu's arteritis

Type I	Branches from the aortic arch
Type IIa	Ascending aorta, aortic arch, and its branches
Type IIb	Ascending aorta, aortic arch, and its branches, thoracic descending aorta
Type III	Thoracic descending aorta, abdominal aorta, and/or renal arteries
Type IV	Abdominal aorta and/or renal arteries
Type V	Combined features of Types IIb and IV

and MRI which can demonstrate mural changes even before luminal narrowing occur.

## Materials and Methods

We searched our CT scan center archives to look for the word "Takayasu's arteritis" or "nonspecific arteritis" reported over the period of last 3 years. From the total cases, we selected patients with age less than 18 years. The diagnosis of Takayasu's arteritis was based on criteria given by Sharma et al according to which presence of two major, or one major and two minor, or four minor criteria suggested the diagnosis (►Table 2).<sup>6</sup> CT angiography was performed on all the cases by 64-channel multidetector CT (Lightspeed Ultra, GE Medical Systems, Milwaukee, WI). A 20-gauge needle was placed into the antecubital vein, and nonionic contrast material, iohexol (Omnipaque 300; GE Healthcare) was injected at a rate of 2.5 to 3.0 mL/s using a power injector (OptiVantage DH; Tyco, Mallinckrodt) in amount of 2 mL/kg. Slice thickness of 1.25 mm was used during arterial and venous phase with pitch value of 1.

## Results

A total of 23 patients were reported as Takayasu's arteritis or nonspecific aortoarteritis. Of these 23 patients 11 were

**Table 2** Diagnostic criteria for Takayasu's arteritis

Major criteria	Minor criteria
<ul style="list-style-type: none"> <li>Left mid-subclavian artery lesion</li> <li>Right mid-subclavian artery lesion</li> <li>Characteristic signs and symptoms of at least 1-month duration (including limb claudication, pulselessness or pulse differences in limbs, an unobtainable or significant blood pressure difference, fever, neck pain, transient amaurosis, blurred vision, syncope, dyspnea, or palpitations)</li> </ul>	<ul style="list-style-type: none"> <li>High erythrocyte sedimentation rate</li> <li>Carotid artery tenderness</li> <li>Hypertension</li> <li>Aortic regurgitation or annuloaortic ectasia</li> <li>Pulmonary artery lesion</li> <li>Left mid-common carotid lesion</li> <li>Distal brachiocephalic trunk lesion</li> <li>Descending thoracic aorta lesion</li> <li>Abdominal aorta lesion</li> <li>Coronary artery lesions</li> </ul>

of pediatric age group (<18 years) and we retrospectively reviewed CT angiographic findings of these 11 pediatric patients of Takayasu's disease. Three of them were males and 8 were females. Their age ranged from 12 to 18 years (mean age 15 years). In 5 out of 11 patients, both abdominal and thoracic aorta with their branches were involved. Isolated thoracic and isolated abdominal aorta with their branches were involved in three cases each. Pattern of distribution of disease is summarized in ►Table 3. Two of the patients showed pulmonary artery dilatation and coronary arteries were involved in none of the cases. Ten out of 11 patients were started on prednisone. One was given prednisone with antitubercular regimen as CT raised suspicion of tuberculosis revealing mediastinal and retroperitoneal lymphadenopathy and cavitary lesions in lungs along with bronchiectasis which was confirmed on histopathological examination. Antihypertensive drugs were given in the patients presenting with hypertension. No follow-up CT scan was performed predominantly due to financial issues and patients were followed up mainly by clinical examination, erythrocyte sedimentation rate levels, and Doppler studies wherever possible.

Typical CT angiographic features of the patients are summarized in ►Table 4 and ►Table 5 in thoracic and abdominal lesions. Mural thickening with luminal stenosis was the most common finding (►Figs. 1 and 2). Aneurysmal dilatation of the descending thoracic aorta was observed in one case (►Fig. 2). Vessel stenosis without mural thickening, thrombosis and dilatation were the other findings. Collateral vessels were observed in many cases both in thoracic and abdominal vessels (►Fig. 3). In thorax these vessels were visible around subclavian and carotid arteries predominantly derived from intercostal vessels. In abdomen multiple retroperitoneal, and abdominal wall collateral vessels were

**Table 3** Pattern of involvement in 11 pediatric cases of Takayasu's disease

Involved segment	No. of cases	%
Ascending aorta	2	18.2
Arch of aorta	3	27.3
Descending aorta	7	63.6
Proximal abdominal aorta	4	36.4
Mid abdominal aorta	4	36.4
Distal abdominal aorta	3	27.3
Right common carotid artery	2	18.2
Left common carotid artery	4	36.4
Brachiocephalic artery	2	18.2
Right subclavian artery	2	18.2
Left subclavian artery	6	54.6
Superior mesenteric and/or celiac artery	3	27.3
Right renal artery	4	36.4
Left renal artery	7	63.6

**Table 4** Sites of involvement and findings on CT angiography in eight pediatric patients of Takayasu's arteritis with thoracic lesions

Artery involved	Mural thickening		Dilatation		Thrombi		Ulcer like lesion		Collateralization	
	No.	%	No.	%	No.	%	No.	%	No.	%
Ascending thoracic aorta	2	25	0	0	0	0	0	0	1	12.5
Arch of aorta	3	37.5	0	0	0	0	0	0	1	12.5
Descending thoracic aorta	7	87.5	1	12.5	1	12.5	1	12.5	0	0
Brachiocephalic	2	25	0	0	0	0	0	0	0	0
Common carotid (right)	2	25	0	0	0	0	0	0	1	12.5
Common carotid (left)	4	50	0	0	1	12.5	0	0	3	37.5
Subclavian (right)	2	25	0	0	0	0	0	0	2	25
Subclavian (left)	5	62.5	0	0	1	12.5	0	0	6	75
Vertebral (right)	1	12.5	0	0	0	0	0	0	1	12.5
Vertebral (left)	2	25	0	0	0	0	0	0	2	25
Pulmonary artery	0	0	2	25	0	0	0	0	0	0

**Table 5** Sites of involvement and findings on CT angiography in eight pediatric patients of Takayasu's arteritis with abdominal lesions

Segment involved	Mural thickening		Ostial narrowing		Stenosis without thickening		Thrombosis	
	No.	%	No.	%	No.	%	No.	%
Proximal abdominal aorta	4	50	0	0	0	0	1	12.5
Mid abdominal aorta	4	50	0	0	0	0	0	0
Distal abdominal aorta	1	12.5	0	0	2	25	0	0
Celiac trunk and superior mesenteric artery	0	0	2	25	1	12.5	0	0
Right renal artery	0	0	4	50	3	37.5	0	0
Left renal artery	1	12.5	7	87.5	4	50	2	25

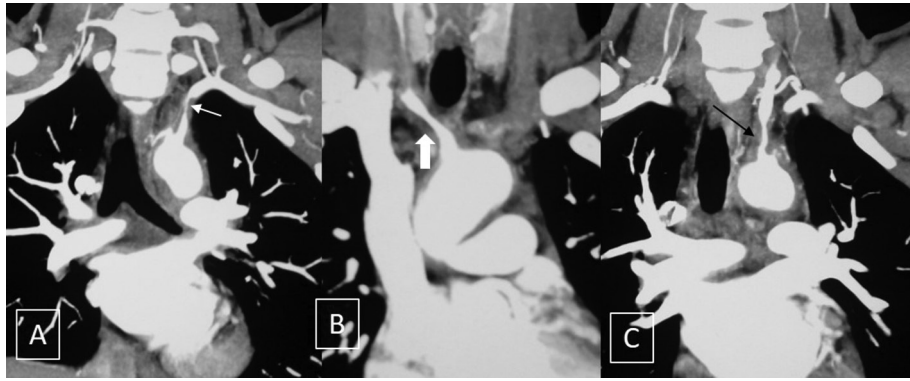
observed. Paravertebral and inferior mesenteric artery also contributed to the formation of collateral around renal artery in one case. One of the cases also revealed pontine infarct. In abdomen, involvement of aorta and renal arteries was the most commonly involved site with cases presenting with diffuse mural thickening leading to diffuse narrowing as well as ostial stenosis. Ostial stenosis was also seen at the origin of celiac and superior mesenteric artery (►Fig. 4). Two cases of vessel lumen thrombosis were seen, one involving left subclavian and other involving right common carotid artery (►Fig. 5). One of the cases of descending thoracic aortic aneurysm was partially thrombosed (►Fig. 2).

## Discussion

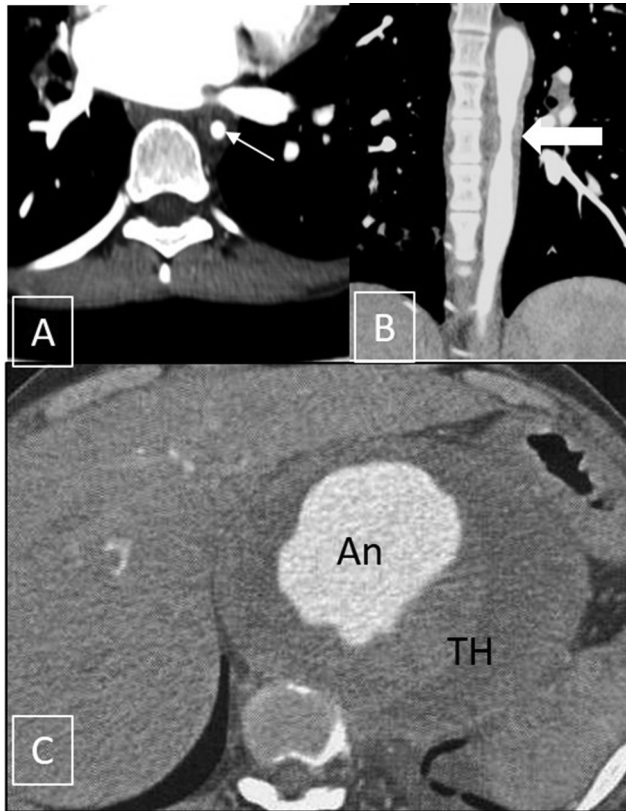
Takayasu's disease, also known as Martorell syndrome, occlusive thromboangiopathy, or pulseless disease, has a more aggressive course in pediatric age group with a reported 5-year mortality rate of 35 to 40%.<sup>7-9</sup> Many studies have shown it to be associated with tuberculosis; however, the nature of association is not clear.<sup>7</sup> One out of 11 of our cases also had tuberculosis and was treated with steroid as well as antitubercular regimen. Takayasu's arteritis is difficult to

diagnose in children as most of the cases present with generalized systemic manifestations and nonspecific complaints. However, high degree of suspicion is mandated in our country given the disease has relative frequency in this region. The disease has a predilection for young female as also found in our study.

The clinical symptoms correlated well with the pattern of vessel involvement of the disease in our study. Eight out of 11 cases presented with hypertension, seven of which revealed renal artery involvement on CT angiography. One of them was associated with renal infarct. Cases with symptoms like headache, dizziness, neck tenderness revealed carotid and vertebral artery involvement on imaging. One of the cases also revealed pontine infarct. Cases with abdominal aortic involvement are related with vague abdominal pain and other abdominal symptoms. Different investigation modalities have been used to evaluate Takayasu's arteritis. Sonography remains primary modality to evaluate carotid and subclavian arteries and was used in follow up of the patients in our study. CT angiography has largely replaced conventional angiography in diagnosis and work up of these patients because besides luminal changes CT can also assess mural thickening, intraluminal thrombus, collateral vessels,



**Fig. 1** Short segment mural thickening with luminal narrowing is seen in left subclavian (white arrow in A), brachiocephalic (solid white arrow in B) and left common carotid (black arrow in C) arteries.

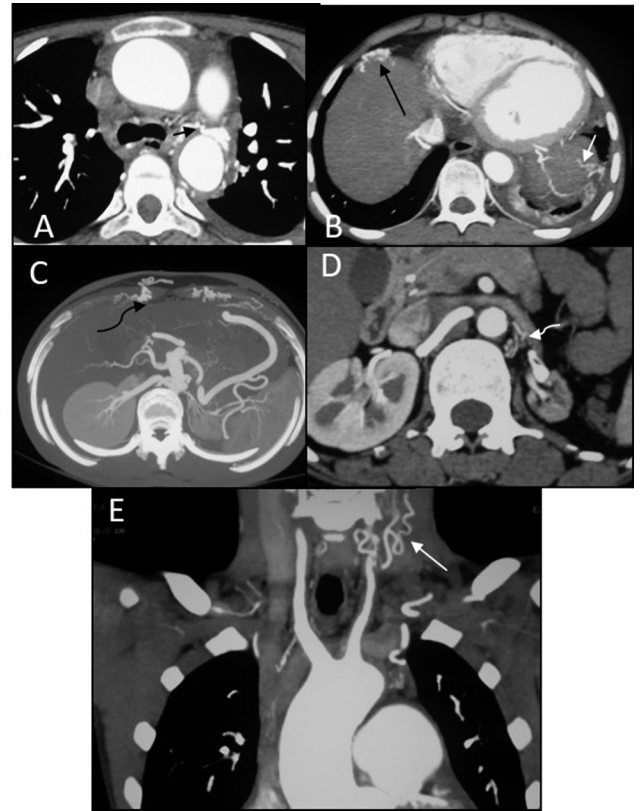


**Fig. 2** (A, B) These figures show circumferential mural thickening in descending thoracic aorta causing significant luminal narrowing (white arrows). Another patient (C) showing aneurysmal dilatation of the involved aortic segment (An) with partial luminal thrombosis (TH).

and other end organ changes unlike conventional angiography.<sup>10-12</sup> In our study we came across following findings on CT angiography.

**Vessel Wall Thickening**

Mural thickening, with or without luminal stenosis, and increased vessel wall enhancement of the involved segment are the most common findings that are associated with this disease. Various studies have shown the decrease of mural thickening and enhancement with treatment.<sup>10-12</sup> Paul et al

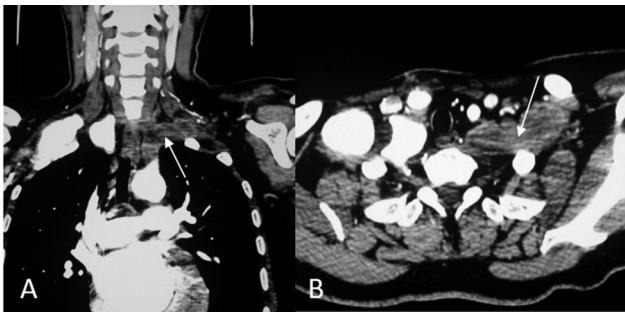


**Fig. 3** Multiple collateral vessels are seen in various patients in CT angiographic images: aortopulmonary (A, short black arrow), left phrenic (B, small white arrow), anterior perihepatic (B, large white arrow), anterior abdominal wall (C, curved black arrow), left cervical collaterals (E, large white arrow are seen). (D) This shows paravertebral collaterals replacing left renal artery in a case (curved black arrow).

studied the role of electron beam CT in follow up of 16 patients and demonstrated the decrease of vessel wall thickening with appearance of wall calcification with treatment.<sup>5</sup> In our study all the cases were associated with enhancing soft tissue density thickening of vessel walls. Transmural calcification of thickened arterial wall is also an important feature of Takayasu’s arteritis and is seen in approximately one-third of patients. Few studies have reported double ring pattern enhancement in the thickened vessel wall.<sup>13</sup>



**Fig. 4** Diffuse mural thickening and narrowing of bilateral renal artery in a patient (A, white arrows). Another patient shows ostial stenosis of the origin of left renal artery (B, black arrow). Small renal infarct (\*) is depicted in (C). A patient with abdominal involvement (D) shows thickening and stenosis of proximal abdominal aorta with ostial stenosis (curved black arrow) of origin of celiac trunk with poststenotic dilatation (curved white arrow).



**Fig. 5** Coronal (A) and axial (B) images showing complete thrombotic occlusion of left subclavian artery (white arrows).

### Segmental Vessel Narrowing and Ostial Stenosis

Luminal narrowing can be observed in 90% of the patients.<sup>13,14</sup> The narrowing can be either due to arterial wall thickening or can be associated with vessel wall inflammation and fibrosis. In our study, segmental stenosis was found most commonly in abdominal aorta, descending thoracic aorta, and branches of aortic arch predominantly in subclavian and carotid arteries. Narrowing at the origin of renal arteries (7 out of 11), celiac trunk, and superior mesenteric arteries (2 out of 11) was also found. Takayasu's arteritis is the most common cause of renal artery stenosis. Carotid and extremity artery stenosis can lead to cerebrovascular stroke or limb claudication.<sup>13,14</sup> Recently a case of supravalvular aortic stenosis caused by Takayasu's arteritis has been reported.<sup>15</sup>

### Intraluminal Thrombus

Thrombus formation in Takayasu's arteritis can be attributed to raised platelet count and raised plasma levels of platelet factor 4, beta thromboglobulin, thrombin/antithrombin complex, fibrinopeptide A, and D-dimer as demonstrated by various

studies.<sup>10,16</sup> In our study thrombosis of subclavian, carotid, and renal arteries was observed. A partially thrombosed aneurysm was also seen in descending thoracic aorta. Besides the thrombosis of the involved arterial lumen, various reports have described venous thrombosis due to hypercoagulable states. Isolated case reports have described cases of cerebral venous thrombosis presenting as acute onset headache and superior mesenteric vein thrombosis presenting as acute abdomen in Takayasu's arteritis.<sup>17</sup> However, due to the rarity of venous thrombosis it has not been established whether thromboembolic event have an association with arteritis or is just anecdotal.

### Collateral Vessels

Where there is blood, there is a way. Chronic luminal occlusion instigates formation of vascular collaterals and their assessment is useful in planning therapy. Various collateral pathways get recruited to supply the ischemic tissues depending upon the stenosed vessel. In our study we came across various intercostal, paravertebral, abdominal and chest wall, retroperitoneal and mesenteric collaterals. A notable collateral pathway that has been described in the obstruction of aorta is Winslow pathway, which connects internal thoracic artery, superior and inferior epigastric artery, and external iliac artery. Prominent Winslow pathway can lead to limb claudication due to stealing effect as well as systemic arterial hypertension.<sup>18</sup> An isolated case report has described a coronary-carotid collateral pathway originating from left anterior descending artery and left circumflex arteries. CT angiography can provide an accurate understanding of the anatomy of collaterals in every patient. Depending on the symptomatology, CT angiography also may aid in therapeutic decision of percutaneous embolization of the collateral responsible for the symptom.<sup>19</sup>

### Other Miscellaneous Findings

Additionally CT angiography can also demonstrate aneurysmal dilatation of involved vessel, pulmonary and coronary artery involvement. Pulmonary and coronary artery involvement has been reported in 63.3 and 44.4%, respectively.<sup>10</sup> However, in our study 2 out of 11 (18.2%) cases involved pulmonary artery and none of the cases revealed coronary artery involvement. CT also helps to evaluate end organ changes such as renal parenchymal atrophy, renal and cerebral infarcts and thus helps in modifying treatment protocol. Rare manifestations of Takayasu's arteritis include brain leptomeningitis, intracranial arteritis, and pyodermagangrenosum.<sup>20-22</sup>

Recently there has been interest in the role of MRI in Takayasu arteritis as it can detect very early mural changes with better sensitivity and can give useful information about disease activity.<sup>23</sup> [18F]-Fluorodeoxyglucose positron emission tomography has also been proposed to evaluate response to treatment in Takayasu arteritis.

### Conclusion

Takayasu disease follows more hostile course in pediatric age group with high mortality. Awareness of its CT angiographic appearances and distribution pattern can help the

clinicians and radiologists to have high index of suspicion in aiding early diagnosis and better management of this disease.

#### Conflict of Interest

None declared.

#### References

- Restrepo CS, Ocazonez D, Suri R, Vargas D. Aortitis: imaging spectrum of the infectious and inflammatory conditions of the aorta. *Radiographics* 2011;31(2):435–451
- Kanitkar M. Renovascular hypertension. *Indian Pediatr* 2005;42(1):47–54
- Hata A, Noda M, Moriawaki R, Numano F. Angiographic findings of Takayasu arteritis: new classification. *Int J Cardiol* 1996;54(Suppl):S155–S163
- Barto D, Bonta E, Ghiorghe S. Takayasu's arteritis—an update. *Cercetări Experimentale&Medico-Chirurgicale Anul XIII. Nr3–4/2006*:149–152
- Paul JF, Fiessinger JN, Sapoval M, et al. Follow-up electron beam CT for the management of early phase Takayasu arteritis. *J Comput Assist Tomogr* 2001;25(6):924–931
- Sharma BK, Jain S, Suri S, Numano F. Diagnostic criteria for Takayasu arteritis. *Int J Cardiol* 1996;54(Suppl):S141–S147
- Morales E, Pineda C, Martínez-Lavín M. Takayasu's arteritis in children. *J Rheumatol* 1991;18(7):1081–1084
- Lee KS, Sohn EY, Hong CY, Kang SR, Berg K. Primary arteritis (Pulseless Disease) in Korean children. *Acta Paediatr Scand* 1967;56(5):526–536
- Aluquin VPR, Albano SA, Chan F, Sandborg C, Pitlick PT. Magnetic resonance imaging in the diagnosis and follow up of Takayasu's arteritis in children. *Ann Rheum Dis* 2002;61(6):526–529
- Akazawa H, Ikeda U, Yamamoto K, Kuroda T, Shimada K. Hypercoagulable state in patients with Takayasu's arteritis. *Thromb Haemost* 1996;75(5):712–716
- Kim SY, Park JH, Chung JW, et al. Follow-up CT evaluation of the mural changes in active Takayasu arteritis. *Korean J Radiol* 2007;8(4):286–294
- Lupi-Herrera E, Sánchez-Torres G, Marcushamer J, Mispireta J, Horwitz S, Vela JE. Takayasu's arteritis. Clinical study of 107 cases. *Am Heart J* 1977;93(1):94–103
- Zhu FP, Luo S, Wang ZJ, Jin ZY, Zhang LJ, Lu GM. Takayasu arteritis: imaging spectrum at multidetector CT angiography. *Br J Radiol* 2012;85(1020):e1282–e1292
- Mason JC. Takayasu arteritis—advances in diagnosis and management. *Nat Rev Rheumatol* 2010;6(7):406–415
- Kim DY, Kim HW. Atypical initial presentation of Takayasu arteritis as isolated supra-valvular aortic stenosis. *J Cardiothorac Surg* 2016;11:15
- Ishikawa K. Natural history and classification of occlusive thromboaropathy (Takayasu's disease) *Circulation* 1978;57(1):27–35
- Huang Y, Ye Z, Zheng Z, et al. Superior mesenteric artery thrombosis of Takayasu arteritis: a case report and review of the literatures. *J Am Coll Cardiol* 2015;66(16, Supplement):C247
- Babu SNM, Chacko S, Irodi A, Joseph E, Joseph G. Winslow pathway collaterals in Takayasu arteritis with middle aortic syndrome. *IHJ Cardiovasc Case Rep* 2019;3:39–43
- Ando H, Funabashi N, Uehara M, et al. Abnormal collateral arterial systems in Takayasu's arteritis and Leriche's syndrome evaluated by whole body acquisition using multislice computed tomography. *Int J Cardiol* 2007;121(3):306–308
- Thokchom NS, Sangma KA, Hafi Bishurul NA, Verma K. Pyoderma Gangrenosum with Takayasu's arteritis: a rare association. *J Med Soc* 2018;32(3):231–233
- Tanna D, Mendiratta N, Negalur N. An unusual case of Takayasu arteritis presenting as leptomeningitis with obstructive hydrocephalus. *Rheumatol Adv Pract* 2018;2(suppl 1):rky033.001
- Edwards SL, Baker V, Boswell GE, Butts MS. A rare case of Takayasu arteritis with intracranial involvement, aortic valvulitis, and giant cell aortitis. *J Clin Rheumatol* 2018. Doi: 10.1097/RHU.0000000000000960
- Choe YH, Han BK, Koh EM, Kim DK, Do YS, Lee WR. Takayasu's arteritis: assessment of disease activity with contrast-enhanced MR imaging. *Am J Roentgenol* 2000;175(2):505–511