

## Erratum

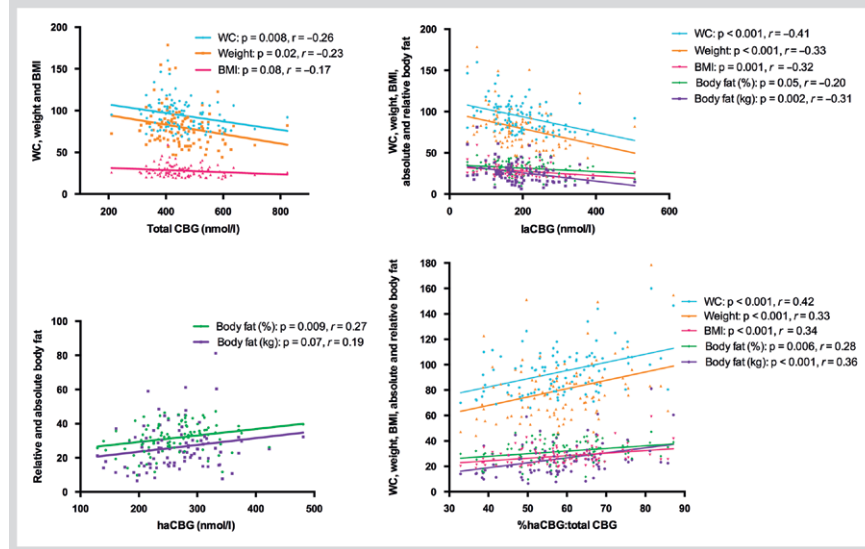
## Evidence of Reduced CBG Cleavage in Abdominal Obesity: A Potential Factor in Development of the Metabolic Syndrome

M. A. Nenke, J. G. Lewis, W. Rankin, D. J Torpy

Horm Metab Res 2016; 48 (08): 523–528

DOI: 10.1055/s-0042-108728

Fig. 1 was published incorrectly in the print issue. Please see the correct version below.



**Fig. 1** Correlations between CBG affinity forms and anthropometric measurements in the total cohort. WC: Waist circumference (cm); weight (kg); BMI: Body mass index ( $\text{kg}/\text{m}^2$ ).