




Chronic Drug-Induced Liver Injury from Labetalol during the Postpartum Period: A Case Report

Bruce Lee, MD¹  Suriya Xiong, PharmD, BCACP² Elizabeth A. Westen, MD³ Julie Ann Warner, MD⁴

¹Department of Obstetrics and Gynecology, Rochester General Hospital, Rochester, New York

²Department of Pharmaceutical Care – Ambulatory Care, Digestive Health Center, University of Iowa Hospitals & Clinics, Coralville, Iowa

³Department of Maternal-Fetal Medicine, Rochester General Hospital, Rochester, New York

⁴Department of Pathology and Laboratory Medicine, Rochester General Hospital, Rochester, New York

Address for correspondence Bruce Lee, MD, Rochester General Hospital, 625 South Goodman St, Apt 206, Rochester, NY 14620 (e-mail: Bruce7ee920@gmail.com).

AJP Rep 2024;14:e43–e47.

Abstract

Keywords

- drug-induced liver injury
- labetalol
- preeclampsia
- postpartum
- transaminitis

Drug-induced liver injury (DILI) is a common cause of transaminitis in pregnancy. A 34-year-old G3P2012 presented 3 weeks postpartum for preeclampsia with severe features. After receiving acute antihypertensive medications, she was discharged home with labetalol. She presented 5 months later with general malaise, scleral icterus, nausea, and mild right upper quadrant pain and found to have significantly elevated transaminitis. She had a negative infectious, autoimmune, biliary, and steatohepatitis workup. A liver biopsy was performed supporting the diagnosis of DILI. After patient self-discontinued labetalol, her hepatitis significantly improved. However, she developed chronic DILI and liver enzymes normalized during her subsequent pregnancy at 34 weeks. Patient's written consent was obtained for this case report. Chronic DILI secondary to labetalol use is a rare and potentially fatal condition that should be considered on the differential for transaminitis during pregnancy and postpartum period.

Liver disease during pregnancy and the postpartum period is a diagnostic conundrum for clinicians due to an extensive broad differential diagnosis. Approximately 3% of women are affected by some form of liver disease during pregnancy.¹ Drug-induced liver injury (DILI) is one important cause that is a challenging diagnosis due to the lack of objective testing, incomplete knowledge of mechanism, and variety of offending agents.^{1,2} The most common causes of DILI in pregnancy include analgesics, antihypertensive medications (methyldopa and hydralazine), antimicrobials (nitrofurantoin and minocycline), antiretroviral agents, anticholinergics, and propylthiouracil.^{2,3} A combination of genetic predisposition and environmental factors related to drug metabolism

causes a complex cascade of cellular events leading to liver injury.⁴ Withdrawal of the offending agent is the primary management leading to spontaneous resolution.^{2,4}

Labetalol is a selective α - and nonselective β -adrenergic antagonist and is one of the first-line treatments for preeclampsia.⁵ It has an excellent safety profile and efficacy compared with hydralazine and calcium channel blockers in the treatment of hypertension (HTN) in pregnancy.⁵ Common side effects include orthostatic hypotension, dizziness, bradycardia, nausea, and diarrhea.⁶ In the literature, the majority of DILI from labetalol are in nonpregnant individuals that resulted in mild–moderate transaminitis (up to 8%).⁶ Rarely DILI has been reported in pregnancy. Chronic liver

received

June 12, 2022

accepted

October 20, 2023

accepted manuscript online

November 11, 2023

DOI <https://doi.org/10.1055/a-2209-4636>

10.1055/a-2209-4636.

ISSN 2157-6998.

© 2024. The Author(s).

This is an open access article published by Thieme under the terms of the Creative Commons Attribution-NonDerivative-NonCommercial-License, permitting copying and reproduction so long as the original work is given appropriate credit. Contents may not be used for commercial purposes, or adapted, remixed, transformed or built upon. (<https://creativecommons.org/licenses/by-nc-nd/4.0/>)

Thieme Medical Publishers, Inc., 333 Seventh Avenue, 18th Floor, New York, NY 10001, USA

injury occurs in approximately 17% of individuals experiencing DILI; however, according to LiverTox, no cases of chronic DILI have ever been reported related to labetalol use.^{2,6,7}

We present a rare case of pregnancy-related DILI from labetalol resulting in chronic hepatitis.

Case

A 34-year-old G3P2012 presented 3 weeks postpartum for preeclampsia with severe features. She previously underwent an uncomplicated primary cesarean section for persistent category 2 tracings after an induction of labor for oligohydramnios at 39^{5/7} weeks. Intrapartum she developed gestational HTN with normal liver enzymes. She was discharged on postpartum day (PPD) 2. Her medical history included an antinuclear antibody (ANA) titer 1:640 and skin biopsy of rash on her back for lupus workup that was negative. No prior history of liver disease. There was no alcohol or tobacco use. Allergies included shellfish (nausea and vomiting).

She presented to her 1-week postpartum visit with blood pressure (BP) of 140/80 and repeat laboratory tests were significant for an aspartate transaminase/alanine transaminase (AST/ALT) 45/33 U/L (normal, 7–37 U/L and 10–49 U/L, respectively). She then presented to the emergency room on PPD 19 after home nursing visit reported an elevated BP of 160/100. She reported headache and dizziness and was found to have severe range BPs requiring a total of 140 mg of intravenous (IV) labetalol and 20 mg of IV hydralazine. She

was diagnosed with preeclampsia with severe features, received 24 hours of magnesium sulfate, and achieved adequate BP control. Her laboratory tests were significant for: normal complete blood count (CBC), AST/ALT 42/28 U/L, and normal protein/creatinine 162.9 mg/g (0–100 mg/g). She was discharged home after a 3-day hospital stay with labetalol 300 mg twice daily.

She developed chronic HTN postpartum and her primary care provider (PCP) increased her labetalol to 400 mg twice daily 3 months postpartum. She returned to her PCP after another 1 month and was prescribed hydralazine 50 mg twice daily due to persistent elevated BPs. However, the patient reported never taking this medication and was only on her prescribed labetalol at this time. She had not previously traveled, had sick contacts, or took any herbal supplements. Outpatient laboratory tests showed persistent elevated AST/ALT 38/47 and normal total bilirubin (TB) 0.3 mg/dL (normal, 0.3–1.2 mg/dL). A nephrology consult and renal ultrasound (US) were ordered, but patient did not follow-up.

She presented to the urgent care 6 months postpartum for general malaise, scleral icterus, and nausea and mild right upper quadrant pain. She attributed this to her labetalol medication and self-discontinued. Outpatient laboratory tests were remarkable for a normal CBC, AST/ALT 1,294/1,589 U/L, alkaline phosphatase (Alk Phos) 229 U/L (normal, 42–98 U/L), TB 8.4 mg/dL, amylase 145 U/L (normal, 28–100 U/L), lipase 33 U/L (normal, 6–51 U/L), and negative hepatitis (A, B, C) panel (► Fig. 1). Direct bilirubin was 7.7 mg/dL (normal, 0–0.3 mg/dL)

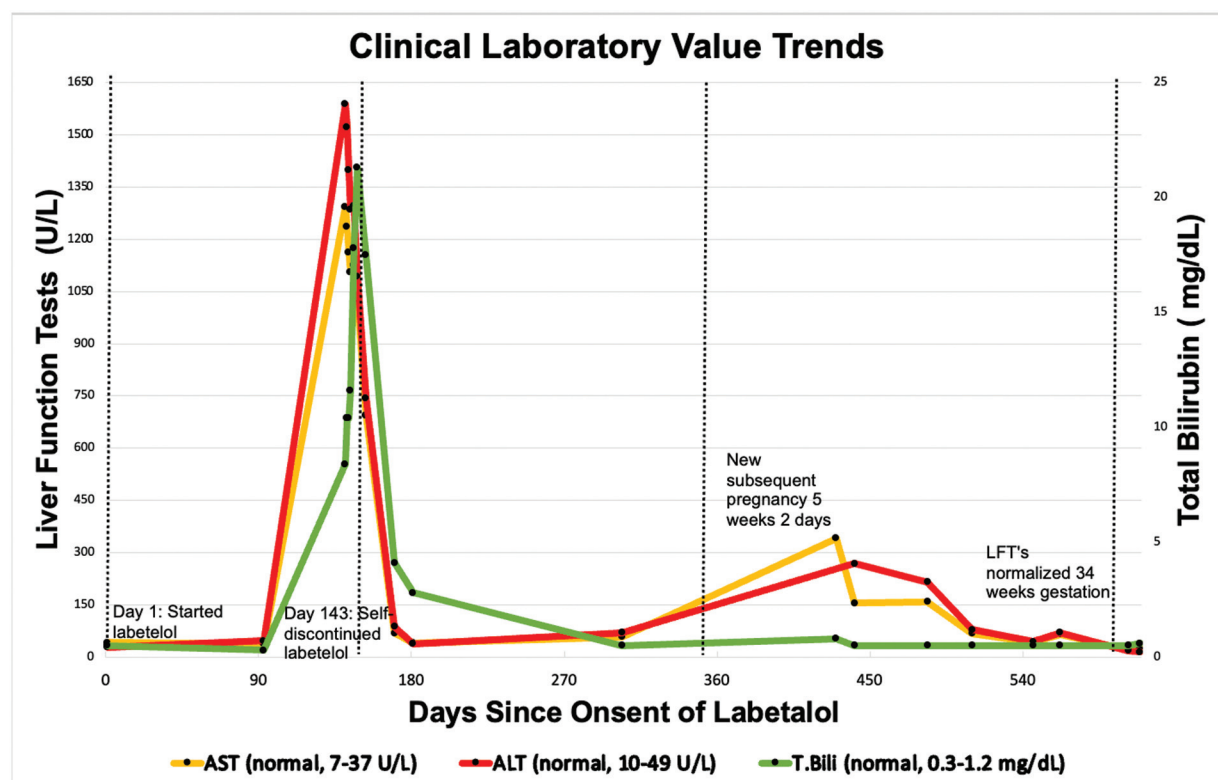


Fig. 1 LFTs and total bilirubin laboratory trends associated with labetalol use. LFTs normalized approximately 15 months after self-discontinuation of labetalol at her subsequent pregnancy at 34 weeks' gestation. ALT, alanine transaminase; AST, aspartate transaminase; LFTs, liver function tests.

and indirect was 2.8 mg/dL (0.1–1.0 mg/dL). She was subsequently admitted for further evaluation with medicine, gastroenterology, and nutrition. She had a negative urine toxicology and salicylates screen.

Autoimmune workup was unremarkable: rheumatoid factor, anticardiolipin antibody (AB) immunoglobulin (Ig) G and IgM, antidouble-stranded DNA, antismooth muscle A IgG, antimitochondrial M2 AB, F-actin AB IgG, beta-2-glycoprotein IgG and IgM, C3 87 mg/dL (normal, 90–180 mg/dL) and normal C4. She previously had an elevated ANA titer 1:640. Cytomegalovirus (CMV), Epstein–Barr virus (EBV), coronavirus disease 2019, and T-spot were negative. Alpha-1 antitrypsin and ceruloplasmin were negative. Iron studies showed iron 125 µg/dL (normal, 40–170 µg/dL), total iron-binding capacity 324 µg/dL (normal 250–450 µg/dL), iron saturations 39% (normal, 15–55%), and ferritin 439 ng/mL (normal, 10–291 ng/mL). Coagulation studies showed mildly elevated prothrombin time 15 seconds (normal, 10.2–12.9 seconds), international normalized ratio 1.3 (normal, 0.9–1.1), and activated partial thromboplastin time 37.2 seconds (normal, 25.1–36.5 seconds). Abdominal US demonstrated a normal liver with two small hemangiomas. Doppler US showed hypoechoic liver parenchyma, slightly elevated resistive index of the hepatic artery, and normal major vessels of the liver and spleen.

Labetalol dosage was reduced from 400 mg twice daily to 100 mg twice daily due to suspicion of DILI, though patient did not take this. Due to patient childcare needs, she was discharged home with outpatient follow-up. Primary team suspected possible autoimmune etiology due to previous positive ANA screen. She was discharged on labetalol 200 mg twice daily and declined other anti-HTN medications, though patient reports not taking labetalol.

An outpatient liver biopsy was performed. Biopsy showed portal inflammation with neutrophils, lymphocytes, and scattered eosinophils. There was no significant cholestasis or steatosis. A trichrome stain demonstrated portal and perisinusoidal fibrosis and reticulin stain showed normal hepatocyte architecture. There was evidence of both acute and chronic inflammation. CMV and EBV stain were negative. A cluster of differentiation 128 immunohistochemical stain showed scattered plasma cells in portal areas. Given the lack of autoimmune and infectious etiologies, and presence of eosinophils, this was most consistent with labetalol-induced hepatotoxicity.

One-and-a-half weeks later, her liver enzymes decreased to AST/ALT 695/744 U/L and then 2 weeks later, AST/ALT 69/87 associated with self-discontinuing labetalol. Her liver enzymes significantly improved, but never normalized over the next 7 months. Subsequently, she became pregnant and resulted in worsening liver enzymes ALT 341 U/L. Fortunately, her liver enzymes decreased at 21 weeks' gestation AST/ALT 68/79 U/L and ultimately normalized at 34 weeks' gestation. She presented at 35 weeks for preterm labor and underwent a repeat cesarean section for category 2 tracing. She developed postpartum severe preeclampsia and received nifedipine with adequate BP control.

Discussion

Labetalol is one of the first-line antihypertensive medications to treat HTN in pregnancy and overall has an excellent safety profile.⁵ However, labetalol also has the highest risk of DILI among beta-antagonists causing mild–moderate transaminitis in up to 8% of patients.⁶ The specific mechanism remains unknown; however, it is thought to be due to a metabolic idiosyncratic disposition that follows a hepatocellular pattern of injury with a latency period of 3 months (time of initiating drug to DILI) and resolves after 1 month.⁷ Idiosyncratic reactions occur less commonly, have a varied presentation and less consistent dosage relationship, and only affects susceptible individuals.² Obstetricians should be aware of the potential for hepatotoxicity as it is one of the most commonly used antihypertensive medications.

The American College of Gastroenterology (ACG) provides diagnosis and treatment guidelines for DILI. The most important evaluation is a complete and thorough medical history as well as ruling out other etiologies as DILI is a diagnosis of exclusion.² The differential diagnosis is broad and includes acute viral hepatitis, autoimmune hepatitis (AIH), acute Budd–Chiari's syndrome, Wilson's disease, biliary obstruction, and DILI. Imaging such as an abdominal US is useful to evaluate for infiltrative process and to exclude biliary tract pathology.² The Roussel Uclaf Causality Assessment Method is a useful clinical diagnostic tool in evaluation of DILI.^{2,8} Our patient had an R factor of 15.7 (indicating hepatocellular injury) and scored 9 indicating a highly probable cause. In addition, the National Institute of Diabetes and Digestive and Kidney Diseases and the National Library of Medicine developed *LiverTox*, a free and helpful online DILI resource that provides an up-to-date and unbiased medical database for clinicians and patients.

A review of the literature revealed few case reports of DILI from labetalol occurring during pregnancy.^{9–12} In two of these cases, withdrawal of labetalol led to the resolution of transaminitis over several weeks.^{10,11} In more severe cases, combination of labetalol and methyldopa resulted in acute liver failure (ALF) and liver cirrhosis at 27 weeks' gestation.⁹ The most recent case involved a 37-year-old patient at 13 weeks who presented with ALF and required emergency liver transplantation.¹² Similarly, our patient had a significant decline in liver enzymes approximately one-and-a-half weeks after self-discontinuing labetalol. However, she developed chronic DILI that persisted for more than 12 months and resolved at 34 weeks' gestation in her subsequent pregnancy. To the best of our knowledge, this is the first reported case of chronic DILI due to labetalol.

The role of liver biopsy remains controversial as it is not necessary for the diagnosis of DILI. Per the ACG guidelines, a liver biopsy is indicated in our patient case as AIH remained a possible etiology due to a prior history of a positive ANA screen. It is possible that she may have an underlying autoimmune condition that has yet to be identified, but the significant decline of her liver enzymes associated with stopping labetalol argues for a DILI etiology. A trial of corticosteroids could have also been considered as recent

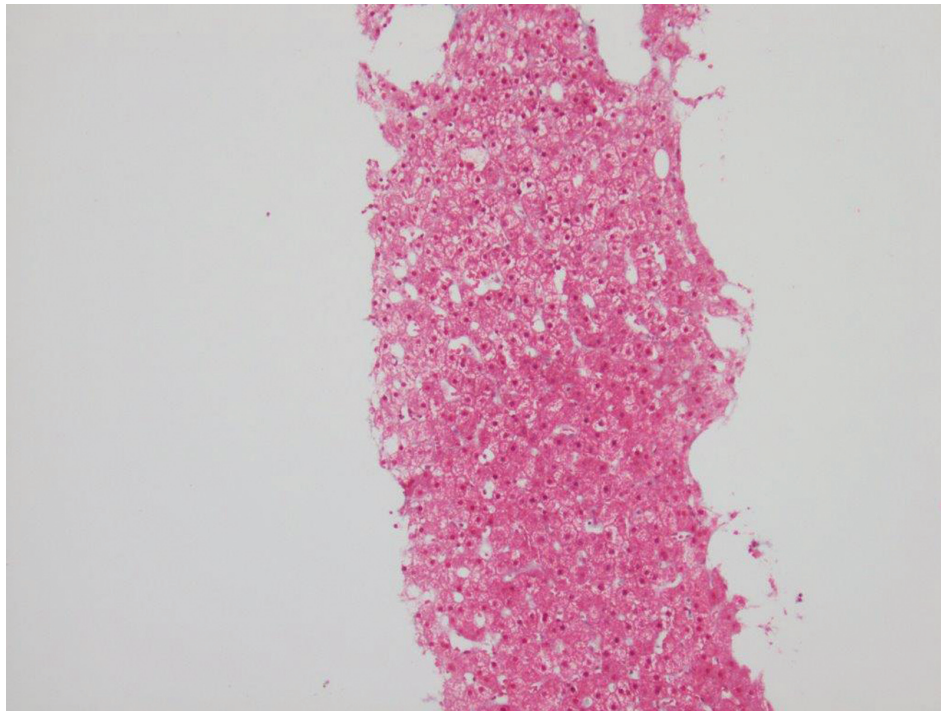


Fig. 2 Normal liver biopsy with trichrome stain at $\times 100$.

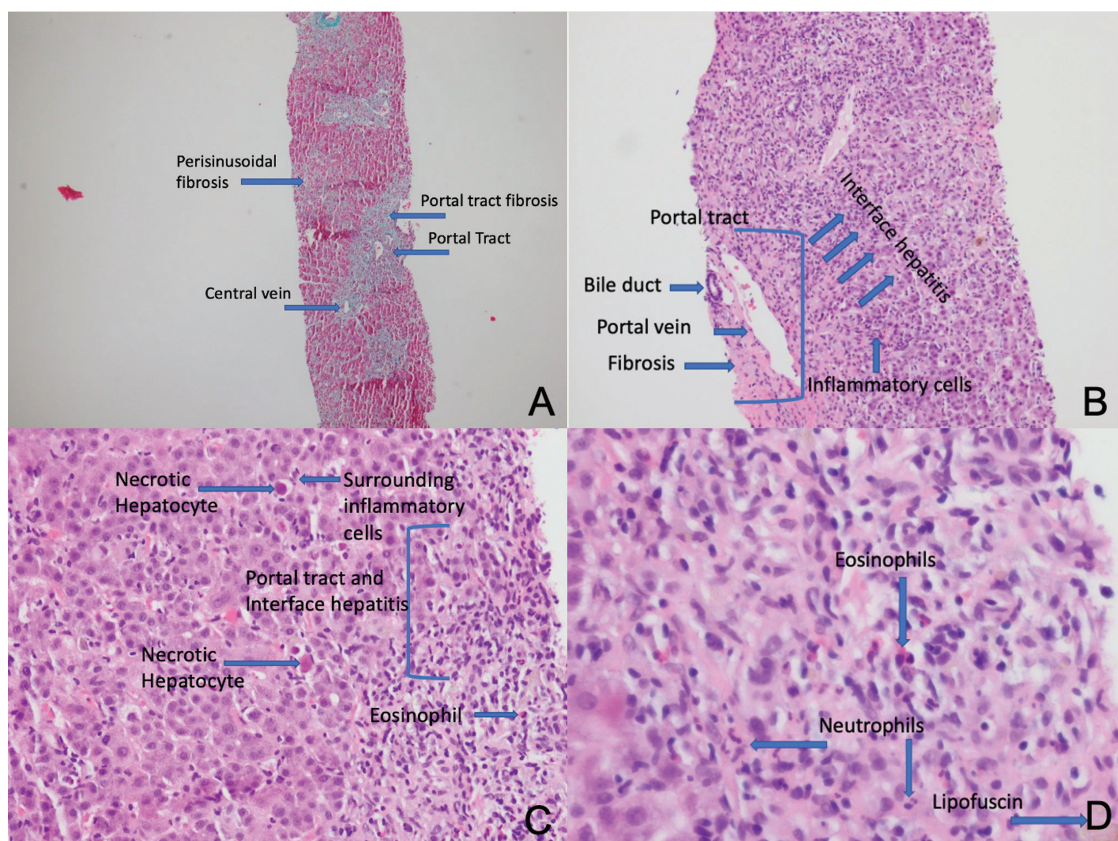


Fig. 3 (A) Trichome stain at $\times 40$ magnification. Inflamed liver parenchyma with perisinusoidal fibrosis and portal tract fibrosis. (B) Hematoxylin and eosin (H&E) stain at $\times 100$ magnification showing inflamed liver core. There is significant inflammation of the portal tract and interface hepatitis in the liver parenchyma. (C) H&E stain at $\times 400$ magnification. Inflamed portal tract consists of lymphocytes, neutrophils, and eosinophils. These inflammatory cells spill out of the portal tract to the surrounding liver parenchyma. Some necrotic hepatocytes are seen. (D) H&E stain at $\times 600$ magnification. Eosinophils and neutrophils are more clearly seen. Lipofuscin pigmentation accumulates over time in aging cells.

literature have shown that early ALT response to corticosteroids may help distinguish idiosyncratic DILI from AIH.¹³ In addition, chronic DILI could have also persisted due to the hyperestrogenic state in her subsequent pregnancy.

Liver biopsies from labetalol hepatotoxicity generally show scattered lymphocytes with variable degrees of necrosis and apoptosis.¹¹ Patients with an infectious or autoimmune etiology show more significant lymphocytic infiltration with positive viral stains. A normal liver biopsy is shown in ►Fig. 2. Our patient's pathology showed a mix of acute and chronic inflammation with interface hepatitis and subsequent portal tract fibrosis (►Fig. 3). There was no evidence of cholestasis or steatohepatitis on pathology. Interestingly, the presence of eosinophils does provide some evidence of a component of immunoallergic etiology in addition to idiosyncratic predisposition. Overall, the lack of necrosis, significant fibrosis, ductular reaction, and presence of eosinophils is associated with a better outcome.¹⁴ A collaborative effort between the pathologist and medical team is critical.

This case highlights the importance and need for increased awareness of DILI from labetalol use in pregnancy. A comprehensive metabolic panel should be obtained for baseline evaluation prior to starting labetalol. A high index of suspicion is necessary as cases of ALF, liver cirrhosis, and emergency liver transplantation have been reported in pregnancy. This is the first reported case of chronic DILI from labetalol use.

Conclusion

DILI secondary to labetalol is a rare cause of liver disease in pregnancy and can lead to chronic DILI. DILI should be included on the differential diagnoses in the evaluation of liver injury in pregnancy.

Funding

None.

Conflict of Interest

None declared.

References

- 1 Mikolasevic I, Filipec-Kanizaj T, Jakopcic I, et al. Liver disease during pregnancy: a challenging clinical issue. *Med Sci Monit* 2018;24:4080–4090
- 2 Chalasani NP, Maddur H, Russo MW, Wong RJ, Reddy KR Practice Parameters Committee of the American College of Gastroenterology. ACG clinical guideline: diagnosis and management of idiosyncratic drug-induced liver injury. *Am J Gastroenterol* 2021;116(05):878–898
- 3 Lao TT. Drug-induced liver injury in pregnancy. *Best Pract Res Clin Obstet Gynaecol* 2020;68:32–43
- 4 Garcia-Cortes M, Robles-Diaz M, Stephens C, Ortega-Alonso A, Lucena MI, Andrade RJ. Drug induced liver injury: an update. *Arch Toxicol* 2020;94(10):3381–3407
- 5 Gestational hypertension and preeclampsia: ACOG Practice Bulletin, Number 222. *Obstet Gynecol* 2020;135(06):e237–e260
- 6 Adverse Drug Reaction Probability Scale (Naranjo) in Drug Induced Liver Injury. In: *LiverTox: Clinical and Research Information on Drug-Induced Liver Injury*. Bethesda (MD): National Institute of Diabetes and Digestive and Kidney Diseases; 2012
- 7 Labetalol. In: *LiverTox: Clinical and Research Information on Drug-Induced Liver Injury*. Bethesda (MD): National Institute of Diabetes and Digestive and Kidney Diseases; 2012
- 8 Roussel Uclaf Causality Assessment Method (RUCAM) in Drug Induced Liver Injury. In: *LiverTox: Clinical and Research Information on Drug-Induced Liver Injury*. Bethesda (MD): National Institute of Diabetes and Digestive and Kidney Diseases; 2012
- 9 Firoz T, Webber D, Rowe H. Drug-induced fulminant hepatic failure in pregnancy. *Obstet Med* 2015;8(04):190–192
- 10 Ginzburg R, Singleton R, Barr WB. Probable labetalol-induced hepatotoxicity. *J Pharm Pract* 2016;20(03):283–287
- 11 Whelan A, Izewski J, Berkelhammer C, Walloch J, Kay HH. Labetalol-induced hepatotoxicity during pregnancy: a case report. *AJP Rep* 2020;10(03):e210–e212
- 12 Zucker K, Fung BM, Haddad N, Mehta S. S2625 DILI leading to acute liver failure in a pregnant patient. *Am J Gastroenterol* 2021; 116(01):S1102–S1102
- 13 Weber S, Benesic A, Rotter I, Gerbes AL. Early ALT response to corticosteroid treatment distinguishes idiosyncratic drug-induced liver injury from autoimmune hepatitis. *Liver Int* 2019; 39(10):1906–1917
- 14 Kleiner DE, Chalasani NP, Lee WM, et al; Drug-Induced Liver Injury Network (DILIN). Hepatic histological findings in suspected drug-induced liver injury: systematic evaluation and clinical associations. *Hepatology* 2014;59(02):661–670