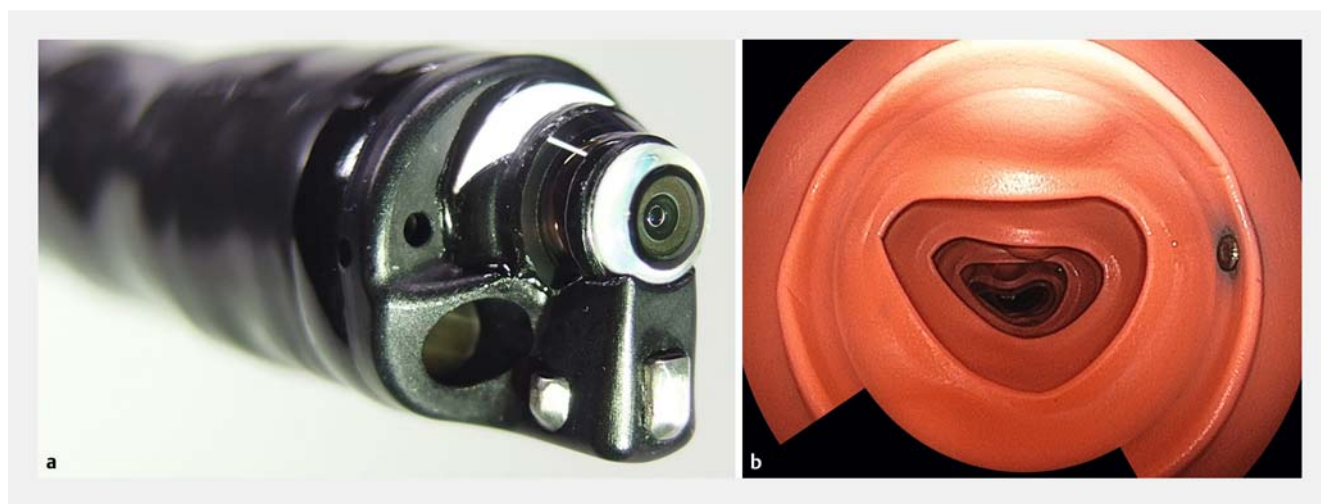


Computer-assisted detection of diminutive and small colon polyps by colonoscopy using an extra-wide-area-view colonoscope

Recently, artificial intelligence (AI), especially using deep learning such as convolutional neural networks, has made great improvements in image recognition. The application of AI to computer-aided diagnosis (CAD) and computer-assisted detection (CADE) in gastrointestinal endoscopic imaging is expected to assist the nonexpert colonoscopist. Moreover, in several reports high accuracy has been achieved for real-time detection and lo-

calization of colon polyps [1, 2]. However, previous reports have been limited to colonoscopes with the conventional angle of view, and the CADE system cannot detect polyps that are out of sight. A prototype extra-wide-area-view colonoscope (EWAVC) has two lenses, a 160°-to-240°-angle lateral-backward-view lens and a standard 160°-angle forward-view lens; views from both these lenses are simultaneously constructed and displayed on a

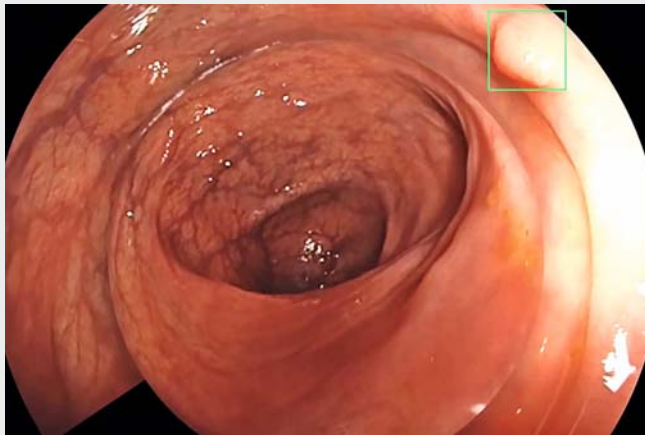
video monitor as a single image (Olympus Co., Tokyo, Japan) (► Fig. 1 a, b) [3, 4]. This novel endoscopic image is expected to assist in achieving a higher adenoma detection rate and a reduced polyp miss rate. Current drawbacks are that endoscopists are not familiar with the lateral-backward view, and the wider-view monitor has the potential to cause endoscopists to overlook polyps that are in view.



► **Fig. 1** **a** Tip of a prototype extra-wide-area-view colonoscope (EWAVC) showing lateral-backward-view and forward-view lenses. **b** Endoscopic image of a simulated polyp behind a fold in the lateral-backward field seen with this colonoscope using an anatomic colorectal model.



► **Fig. 2** **a** Computer-assisted detection of a diminutive polyp (rectangle) in the forward field seen with the EWAVC. **b** Computer-assisted detection of a 5-mm polyp (rectangle) in the forward field seen with the EWAVC. **c** Computer-assisted detection of a 4-mm polyp (rectangle) behind a fold in the lateral-backward field seen with the EWAVC.



Video 1 Computer-assisted detection of diminutive and small colon polyps by colonoscopy using a novel extra-wide-area-view colonoscope.

We have developed a prototype novel CAde system for colon polyp detection using an EWAVC. In the video, we show first detection of a diminutive polyp in the conventional viewing angle (► **Fig. 2 a, b**). Second, we show detection of a diminutive polyp in the extra-wide-area view angle (► **Fig. 2 c, d**). The lateral-backward view lens can identify a polyp that is behind a fold. After detecting this polyp, we can remove it using the cold polypectomy technique. The working channel in this novel colonoscope is at five o'clock. After a little experience, polypectomy can be done without any problem. CAde with AI using EWAVC may be helpful for improving the adenoma detection rate and reducing the polyp miss rate of endoscopists with varying levels of experience.

Endoscopy_UCTN_Code_TTT_1AQ_2AB

Competing interests

The authors declare that they have no conflict of interest.

The authors

Toshio Uraoka¹, Shinji Tanaka², Yutaka Saito³, Takayuki Matsumoto⁴, Shiko Kuribayashi¹, Keisuke Hori⁵, Hisao Tajiri⁶

- 1 Department of Gastroenterology and Hepatology, Gunma University Graduate School of Medicine, Maebashi, Japan
- 2 Department of Endoscopy, Hiroshima University Hospital, Hiroshima, Japan
- 3 Endoscopy Division, National Cancer Center Hospital, Tokyo, Japan
- 4 Division of Gastroenterology, Department of Medicine, Iwate Medical University, Morioka, Japan
- 5 Department of Internal Medicine, Tsuyama Central Hospital, Okayama, Japan
- 6 Department of Innovative Interventional Endoscopy Research, The Jikei University School of Medicine, Tokyo, Japan

Corresponding author

Toshio Uraoka, MD, PhD
Department of Gastroenterology and Hepatology, Gunma University Graduate School of Medicine, 3-39-22, Showa-machi, Maebashi, Gunma, 371-8514, Japan
Fax: +81-27-2208137
toshi_urao@yahoo.co.jp

References

- [1] Urban G, Tripathi P, Alkayali T et al. Deep learning localizes and identifies polyps in real time with 96% accuracy in screening colonoscopy. *Gastroenterology* 2018; 155: 1069–1078
- [2] Kudo SE, Mori Y, Misawa M et al. Artificial intelligence and colonoscopy: current status and future perspectives. *Dig Endosc* 2019; 31: 363–371
- [3] Uraoka T, Tanaka S, Matsumoto T et al. A novel extra-wide-angle-view colonoscope: a simulated pilot study using anatomic colorectal models. *Gastrointest Endosc* 2013; 77: 480–483
- [4] Uraoka T, Tanaka S, Oka S et al. Feasibility of a novel colonoscope with extra-wide angle of view: a clinical study. *Endoscopy* 2015; 47: 444–448

Bibliography

Endoscopy 2021; 53: E102–E103

DOI 10.1055/a-1202-1277

ISSN 0013-726X

published online 13.7.2020

© 2020, Thieme. All rights reserved.

Georg Thieme Verlag KG, Rüdigerstraße 14, 70469 Stuttgart, Germany

ENDOSCOPY E-VIDEOS

<https://eref.thieme.de/e-videos>



Endoscopy E-Videos is a free access online section, reporting on interesting cases and new

techniques in gastroenterological endoscopy. All papers include a high quality video and all contributions are freely accessible online.

This section has its own submission website at

<https://mc.manuscriptcentral.com/e-videos>