

Does a history of head and neck cancer affect outcome of endoscopic submucosal dissection for superficial esophageal squamous cell carcinoma?



Authors

Renata Nobre Moura¹, Vitor Nunes Arantes², Tarso Magno Leite Ribeiro², Roberto Gardone Guimarães², Joel Fernandez de Oliveira¹, Marco Aurélio Vamondes Kulcsar¹, Rubens Antonio Aissar Sallum¹, Ulysses Ribeiro-Junior¹, Fauze Maluf-Filho¹

Institutions

- 1 Department of Gastroenterology, Cancer Institute, Hospital das Clínicas of University of Sao Paulo, Sao Paulo, Brazil
- 2 Alfa Institute of Gastroenterology, Hospital de Clínicas, Federal University of Minas Gerais, Belo Horizonte, Brazil

submitted 3.9.2019

accepted after revision 17.2.2020

Bibliography

DOI <https://doi.org/10.1055/a-1147-8977> |
Endoscopy International Open 2020; 08: E900–E910
© Georg Thieme Verlag KG Stuttgart · New York
eISSN 2196-9736

Corresponding author

Renata Nobre Moura, Division of Gastroenterology, Sao Paulo Cancer Institute, Av. Dr. Arnaldo, 251, São Paulo-Brazil 01246-000, Brazil
Fax: +551138877593
renata.nobre@fm.usp.br

ABSTRACT

Background and study aims Esophageal squamous cell carcinoma (ESCC) is the most common secondary tumor in patients with head and neck squamous cell cancer

(HNSCC). Currently, endoscopic submucosal dissection (ESD) is the preferred approach to manage superficial ESCC, however, it remains to be elucidated whether patients with HNSCC and early ESCC managed by ESD have different outcomes.

Patients and methods We retrospectively analyzed esophageal ESD for early ESCC from September 2009 to September 2017 and the following variables: demographics, tumor and specimen size, Paris classification, location, en bloc and R0 resection rates, overall survival (OS) and adverse events (AEs). To reduce selection bias, propensity score matching was applied to compare the results.

Results Eighty-nine ESDs were performed in 81 consecutive patients (47 with HNSCC and 34 without HNSCC). Patients with HNSCC who developed superficial ESCC were found to be younger and to refer a more frequent history of alcohol ingestion and smoking. There was no difference in lesion size, number of lesions, procedure time, en bloc resection rate, R0 resection rate, local recurrence and adverse event rate between the two groups. The histological depth of invasion for patients with HNSCC was significantly shallower before ($P=0.016$) and after ($P=0.047$) matching. The overall survival rate was similar in both groups.

Conclusions Patients with HNSCC have earlier detection of ESCC, probably due to endoscopic screening. Previous history of chemoradiation and surgery for HNSCC does not affect procedure time, AEs and OS.

Introduction

Patients with head and neck squamous cell cancer (HNSCC) frequently develop a secondary tumor, which can occur in the upper gastrointestinal tract, head and neck or lungs, with incidences ranging from 16% to 36% [1, 2]. Esophageal squamous cell carcinoma (ESCC) is the most common secondary tumor in these patients with a reported mean incidence of 5% to 15% and poor prognosis due to a late diagnosis in 90% of cases [3] being the main cause of treatment failure and mortality,

responsible for more than one-third of deaths in patients with HNSCC [4]. When ESCC is diagnosed early, the expected 5-year survival rate is 85% to 100% [4, 5]. Hence, undertaking an esophageal cancer screening protocol in high-risk patients such as individuals with HNSCC may be justified and improve prognosis. At our Institutions, all patients with HNSCC (except those with Stage IV disease), despite the absence of esophageal symptoms, are invited to undertake an endoscopic screening examination. At both centers, a meticulous white-light examination (WLE) is followed by virtual chromoendoscopy and lugol

staining. This protocol has yielded a 7% to 12% finding of ESCC, and interestingly in over 70% of the patients, esophageal neoplastic lesions were superficial and, therefore, suitable for endoscopic resection [6, 7].

Endoscopic techniques have been developed for curative resection of superficial neoplasms of the esophagus, such as endoscopic mucosal resection (EMR) and endoscopic submucosal dissection (ESD). Currently, ESD is considered the preferred approach to manage superficial ESCC, enabling accurate en bloc resection with a lower recurrence rate and improved survival [8–11]. Until 2014, 15 studies had been published specifically on ESD for ESCC, totaling 970 lesions. The en bloc resection rate was 99% (83.3%–100%), R0 resection rate, 82.8% (78%–100%), and curative resection rate, 75.6% (69%–100%), with a local recurrence rate of 0.3% (0%–2.6%) and no mortality [8, 12].

It remains to be elucidated whether patients with HNSCC who develop ESCC and are managed by ESD have different clinical outcomes compared with patients without HNSCC. In patients with HNSCC, the so-called “field cancerization phenomena,” caused by exposure to environmental carcinogens, most notably alcohol and tobacco, would lead to genetic alterations and, subsequently, development of multiple and independent tumors. This association is related to poor survival rates for both primary and secondary tumors [13]. Furthermore, the effects of radiotherapy might hinder endoscopic resection due to scarring or fibrosis and potentially increase adverse event (AE) rate. However, to date, no comparative studies have been performed to evaluate the outcome of ESCC patients with HNSCC managed by ESD.

This study aimed to compare ESD outcomes of both sporadic and HNSCC-associated ESCC. Endpoints were en-bloc resection rate, R0 resection rate, curative resection rate, survival and AE rate.

Patients and methods

This was a retrospective analysis of patients who had undergone ESD for early ESCC from September 2009 to September 2017 at two academic tertiary centers in Brazil. Both centers are major referral Institutions to manage HNSCC patients in Brazil health care public system. Included criteria was superficial ESCC suitable for endoscopic resection by ESD.

Patients were divided into two groups: those with HNSCC (group 1) and those without a previous history of HNSCC (group 2). Clinical information was extracted from a prospectively collected database: demographics, tumor and specimen size, Paris classification, carcinoma location, en bloc resection rate, R0 and curative resection rate, overall survival (OS), local recurrence and AEs. Informed consent for both diagnostic screening EGD and ESD resection was obtained from all patients. Approval was obtained by the Local Ethic Committee of both hospitals. All procedural data on patients and their lesions were collected in a database. When necessary, contact by telephone call was made.

Patients with newly diagnosed HNSCC regardless of previous treatment (surgery or chemoradiation) were submitted to the

Screening Program, which comprises annually EGD with chromoscopy (Iugol iodine staining and NBI). Exclusion criteria for the Screening Protocol were previous ESCC, history of esophageal surgery or advanced HNSCC stage according the 7th AJCC TNM classification [14]. After finishing the HNSCC treatment, all patients were advised to continue on the Program to evaluate metachronous ESCC. Patients from the non-HNSCC group were not submitted to screening endoscopy. They were referred to EGD for the investigation of dyspeptic symptoms.

First, the patients were submitted to conventional WLE with evaluation of oropharynx and hypopharynx under conscious sedation. After washing the esophageal lumen, a meticulous WLE observation was carried out searching for slight color changes, loss of normal vascular pattern or surface irregularities. The second phase involved the use of virtual chromoendoscopy such as NBI to evaluate changes in the intraepithelial papillary capillary loops (IPCLs). In the third phase, Lugol’s staining was performed by spraying 20cc of a 1% Lugol’s solution at esophageal mucosa. Unstained lesions that presented a pink-color sign were considered neoplastic or suspicious and biopsies were taken for histological assessment.

Indication for endoscopic resection was based on Japanese Esophageal Society Guidelines as follows: superficial lesions limited to mucosal layer (T1a) or possible slight infiltration of superficial submucosa, regardless of size or circumferential involvement, were considered suitable for ESD.

Assessment for preoperative diagnosis of invasion and endoscopic resection feasibility was based on detailed endoscopic evaluation with virtual chromoendoscopy and magnifying endoscopy when available. In selected cases endoscopic ultrasound (EUS) was performed. Thorax computed tomography was part of the preoperative staging protocol. All patients had diagnosis confirmation with histological assessment of endoscopic biopsies.

ESD was performed by two experienced endoscopists (F.M.F and V.A) previously trained in Japan, utilizing a needle-type knife (Flush-Knife BT, Fujifilm Co., Japan), following the basic steps: marking, injection, incision, submucosal dissection, and revision of ESD site.

When ESD was considered curative, first EGD control with WLE examination was scheduled at 3 months aiming to check ESD site healing and any signs of residual tumor. Thereafter, annual EGD control with virtual chromoendoscopy and Iugol staining was recommended. After circumferential ESD or semi-circumferential resection producing a defect over 75% of the circumference, preventive stricture measures were undertaken with postoperative administration of oral or injected steroids. Those patients underwent first EGD control at the end of treatment (4 weeks) and endoscopic dilation was performed if dysphagia symptoms or post-ESD stricture were noted.

Tumor size, depth of invasion, lymphovascular invasion, grade of differentiation, and resection margins were histopathologically examined by expert gastrointestinal pathologists, according to the Vienna Classification [15].

Definitions

En bloc resection was achieved when the whole lesion (including the markings) was removed in one piece. R0 resection was defined histologically when margins were negative for neoplastic cells. Endoscopic resection was considered curative when the tumor was resected en bloc, with free vertical margin (R0), pathologically invasion depth was limited to muscularis mucosa (MM) and there was no lymphovascular involvement [16]. Patients with non-curative ESD were referred to additional treatments indicated within the scope of multidisciplinary decision (e.g., esophagectomy with lymph node dissection or radiation therapy with or without chemotherapy).

Procedure time, defined as the time from the marking of the lesion to the completion of lesion resection, was measured in minutes.

Perforation was recognized when mediastinal connective tissue or subcutaneous emphysema was observed during the procedure, or radiographic evidence of free air on chest x-ray after ESD. Chest x-ray was performed after ESD only when a patient was referred for thoracic pain or dyspnea. Perforation was further classified in patients treated endoscopically without clinical repercussion and those who required thoracic drainage or any other surgical approach.

Penetrating blood vessels were sealed using the knife itself or coagulation forceps. Delayed bleeding was defined as decreased blood hemoglobin level >2 g/dL accompanied by hematemesis or melena.

Postoperative stricture was defined as dysphagia and the inability to pass a standard endoscope, requiring treatment such as endoscopic dilation. Tumor recurrence was defined as a finding of neoplastic cells at the scar site in a follow-up EGD control. Metachronous tumor was defined as the occurrence of a novel neoplastic lesion in the esophagus >1 cm apart from the scar site occurring more than 1 year after the index endoscopic resection.

Statistical analysis

Patient characteristics were summarized using descriptive statistics. Categorical variables were presented as absolute and relative frequencies and quantitative data as means and SDs.

Potential differences between the experimental groups were assessed by using the Chi square test or, in case of small sample, the Fisher exact probability test. The Student's *t* test was used to compare means. This test presupposes a normal distribution, which was verified by the Kolmogorov-Smirnov test. When not normally distributed, the Mann-Whitney nonparametric test was used.

Because of differences between the two groups, propensity score matching (PSM) was applied to compare the results. This test aims to reduce or eliminate selection bias in observational studies, which is a useful strategy when random allocation is not possible. PSM employs a predicted probability of group membership based on observed predictors obtained from logistic regression. In this study, PSM was used to match the groups (patients without HNSCC who have similar characteristics to those with HNSCC). Selection of patients was done by

the nearest neighbor matching with caliper of 0.15 to prevent poor matching. Variables included in the matching model were alcohol consumption, smoking, age, and Paris Classification.

Kaplan-Meier curves were constructed to analyze rates of OS and cancer-related survival.

For all analyses, $P < 5\%$ was considered statistically significant.

Statistical analyses were conducted using SPSS software 20.0 and STATA 12.

Results

From September 2009 to September 2017, 848 esophageal cancers were diagnosed as shown in ► **Fig. 1**. From among them, 89 esophageal ESDs to resect superficial ESCC were carried out in 81 consecutive patients. Forty-seven of them (58%) had a previous history of HNSCC and had their tumor detected due to the endoscopic screening protocol. The remaining patients did not have dysphagia nor weight loss and were diagnosed during routine endoscopy motivated by dyspeptic symptoms. The male-to-female ratio was 3.5:1 and the average age was 62.2 years (range 41–84 years). HNSCC subjects who developed superficial ESCC were found to be significantly younger (mean age 58.8 ± 9.5 vs. 67 ± 9.2 ; $P < 0.001$) and more likely to consume alcohol and to smoke (91.5% vs. 58.8% $P < 0.001$ and 93.6% vs. 67.6% $P = 0.002$, respectively).

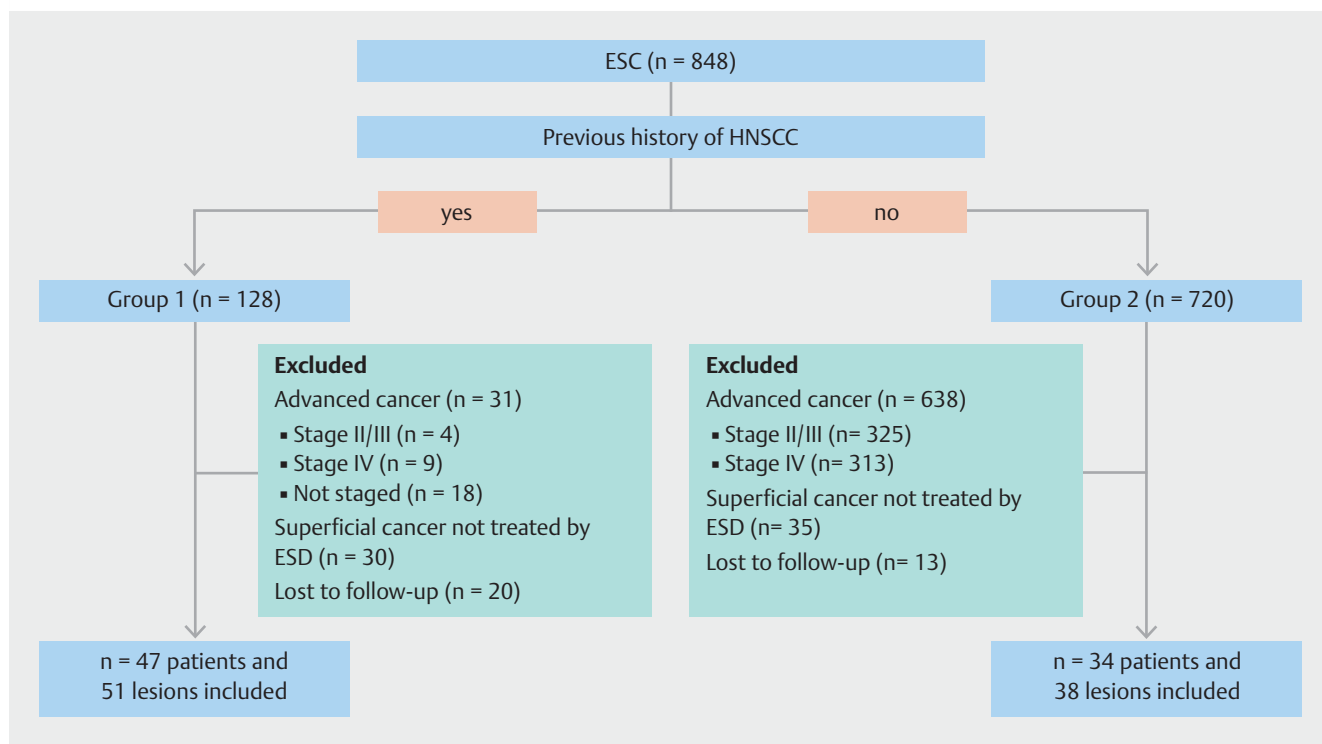
Median specimen size was 3.5 cm, with no statistical difference between the two groups. Most of the tumors were located in the middle esophagus (66%). In the HNSCC group, 84.3% of lesions was classified as flat type (Paris 0-IIB), which was statistically different than the other group ($P = 0.023$). Demographics and clinicopathological characteristics are shown in ► **Table 1**.

In the group with HNSCC, the location of the index tumor was oral cavity in 48.9%, oropharynx in 23.4%, larynx in 19.1%, and hypopharynx in 6.3% of the patients. As regards HNSCC stage, 25 patients (53.1%) had stage III disease (7th AJCC TNM classification). Forty-one patients (87.2%) had previously received chemoradiation and 28 had undergone surgery for the primary cancer.

During the Screening Program, 187 EGDs were performed in 81 patients (mean of 2.3 exams per patient). Esophageal cancer was synchronous to head and neck cancer in 12 patients (25.5%). In the cases of metachronous ESCC, the mean interval was 21 months.

Overall, the mean procedure time, resection and AE rates were 118 minutes, 97.7% and 10.1%, respectively, with no difference between the two groups. In the HNSCC group, esophageal cancer was more frequently found limited to the mucosal layer (88.2% vs. 65.8%, $P = 0.016$). ESD outcomes are shown in ► **Table 2**.

R0 resection was possible in 81 lesions (91%) in 74 patients (91.3%), with no difference between the patients with or without HNSCC (92.2% vs 89.5% respectively, $P = 0.719$). The curative resection rate was 78.4% in group 1 (HNSCC) and 57.8% in group 2 ($P = 0.037$). Reasons for non-curative resection lesions



► **Fig. 1** Flow diagram of selected patients.

► **Table 1** Baseline characteristics.

	Group 1 (HNSCC)	Group 2 (no-HNSCC)	P
Patients			
Gender – male, N(%)	40/47 (85.1)	23/34 (67.6)	0.062 ¹
Alcohol consumption, N(%)	43/47 (91.5)	20/34 (58.8)	<0.001 ²
Smoking, N(%)	44/47 (93.6)	23/34 (67.6)	0.002 ²
Age (years), mean ± SD	58.87 ± 9.57	67.03 ± 9.24	<0.001 ³
Lesions			
Resected specimen size (mm), mean ± SD	32.14 ± 17.12	31.74 ± 16.27	0.990 ¹
Classificação de Paris, N(%)			0.023 ⁴
0-IIA	5/51 (9.8)	4/38 (10.5)	
0-IIB	43/51 (84.3)	24/38 (63.2)	
0-IIC	3/43 (5.9)	10/24 (26.3)	
Location, N(%)			0.065 ³
Upper esophagus	4/51 (7.8)	2/38 (5.3)	
Middle esophagus	38/51 (74.5)	21/38 (55.3)	
Lower esophagus	9/38 (17.6)	15/21 (39.5)	

N = 47, N = 34 patients, groups 1 and 2, respectively.

N = 51, N = 38 lesions, groups 1 and 2, respectively

Kolmogorov-Smirnov normality test for resected specimen size ($P = 0.003$) and age ($P = 0.550$).

¹ Wilcoxon ranksum (Mann-Whitney).

² Chi square.

³ Fisher's exact test.

⁴ Student's *t* test.

► **Table 2** ESD outcomes.

	Group 1 (HNSCC)	Group 2 (no-HNSCC)	P
Lesions			
Resected specimen size (mm), mean ± SD	32.14 ± 17.12	31.74 ± 16.27	0.990 ¹
Circumference, N (%)			0.902 ²
<50 %	13/51 (25.5)	12/38 (31.6)	
50 %-75 %	21/51 (41.2)	13/38 (34.2)	
75 %-100 %	12/51 (23.5)	9/38 (23.7)	
100 %	5/51 (9.8)	4/38 (10.5)	
Procedure time (min), mean ± SD	107.42 ± 40.15	102.03 ± 36.08	0.531 ³
Histological depth of invasion, N(%)			0.016 ⁴
Intramucosa	45/51 (88.2)	25/38 (65.8)	
Superficial submucosa	5/51 (9.8)	7/38 (18.4)	
Deep submucosa	1/51 (2.0)	6/38 (15.8)	
En bloc resection	50/51 (98.0)	37/38 (97.4)	1.000 ¹
R0 resection	47/51 (92.2)	34/38 (89.5)	0.719 ¹
Curative resection	40/51 (78.4)	22/38 (57.9)	0.037 ³
Procedure-related complications			
Bleeding	0/47 (0.0)	0/38 (0.0)	–
Perforation	2/50 (4.0)	1/38 (2.6)	1.000 ⁴
Stricture (estenose)	17/51 (33.3)	8/38 (21.1)	0.202 ²
Tumor Local recurrence	1/51 (2.0)	1/38 (2.6)	1.000 ⁴
Metachronous tumor	10/51 (19.6)	7/38 (18.4)	0.888 ²
Synchronous tumor	4/51 (7.8)	2/38 (5.3)	1.000 ⁴
Patients			
Adjuvant therapy	7/46 (15.2)	9/34 (26.5)	0.214 ²
Mortality	17/47 (36.2)	9/34 (26.5)	0.356 ²

ESD, endoscopic submucosal dissection; HNSC, head and neck squamous cell carcinoma; SD, standard deviation.

N = 47, N = 34 patients, groups 1 and 2, respectively.

N = 51, N = 38 lesions, groups 1 and 2, respectively.

Kolmogorov-Smirnov normality test for resected specimen size ($P = 0.003$) and procedure time ($P = 0.086$).

¹ Wilcoxon ranksum (Mann-Whitney).

² Chi square.

³ Student's *t* test.

⁴ Fisher's exact test.

were as follows: SM invasion (19), positive vertical margins (3), lymphovascular invasion (4), piecemeal resection (1).

Of the 27 patients with non-curative endoscopic resection, 16 underwent adjuvant treatment (esophagectomy $n = 5$, chemoradiation $n = 11$). The remaining patients were placed under observation because of severe comorbidities, advanced age or patient refusal of additional treatment. Those who achieved curative resection underwent annual endoscopic surveillance.

AEs occurred in 28 cases (perforation = 3; stricture = 25), with no difference between the groups. In the group with HNSCC, one patient had a perforation during the procedure

and developed pneumothorax and pneumomediastinum. The patient was managed by clipping, pigtail thorax drainage, enteral feeding and antibiotics. Another patient had a delayed perforation and was successfully managed with enteral feeding and antibiotics. In the group of non-HNSCC, one patient developed subcutaneous emphysema after the procedure managed by enteral feeding and antibiotics. Clinically relevant bleeding was not observed in this cohort.

All 25 patients who developed stricture (group 1 = 17, group 2 = 8) were managed by endoscopic balloon dilation. Cases with mucosal defect over 75% of the circumference received oral

► **Table 3** ESD outcomes before and after PSM.

	Original cohort			Matched cohort		
	Group 1 (HNSCC)	Group 2 (no-HNSCC)	P	Group 1 (HNSCC)	Group 2 (no-HNSCC)	P
Lesions						
Resected specimen size (mm), mean ± SD	32.14 ± 17.12	31.74 ± 16.27	0.990 ¹	31.26 ± 16.89	23.04 ± 7.99	0.012 ¹
Circumference, N (%)			0.902 ²			0.147 ³
<50%	25.5%	31.6%		27.7%	29.8%	
50%–75%	41.2%	34.2%		40.4%	57.4%	
75%–100%	23.5%	23.7%		25.5%	10.6%	
100%	9.8%	10.5%		6.4%	2.1%	
Procedure time (min), mean ± SD	107.42 ± 40.15	102.03 ± 36.08	0.531 ⁴	106.34 ± 39.87	102.02 ± 41.85	0.610 ⁴
Histological depth of invasion, N(%)			0.016 ⁴			0.047 ⁴
Intramucosa	88.2%	65.8%		87.2%	66.0%	
Superficial submucosa	9.8%	18.4%		10.6%	23.4%	
Deep submucosa	2.0%	15.8%		2.1%	10.6%	
En bloc resection	98.0%	97.4%	1.000 ³	97.9%	100.0%	1.000 ³
R0 resection	92.2%	89.5%	0.719 ³	91.5%	95.7%	0.677 ³
Curative resection	78.4%	57.9%	0.037 ²	76.6%	66.0%	0.254 ²
Procedure related complications						
Bleeding	0.0%	0.0%	–	0.0%	0.0%	–
Perforation	4.0%	2.6%	1.000 ³	4.3%	0.0%	0.495 ³
Stricture	33.3%	21.1%	0.202 ²	29.8%	19.1%	0.203 ²
Tumor Local recurrence	2.0%	2.6%	1.000 ³	2.1%	0.0%	1.000 ³
Metachronous tumor	19.6%	18.4%	0.888 ²	19.1%	19.1%	1.000 ²
Synchronous tumor	7.8%	5.3%	1.000 ³	6.4%	17.0%	0.109 ²
Patients						
Adjuvant therapy	15.2%	26.5%	0.214 ²	15.2%	17.4%	0.778 ²
Mortality	36.2%	26.5%	0.356 ²	37.0%	21.7%	0.109 ²

ESD, endoscopic submucosal dissection; HNSCC, head and neck squamous cell carcinoma; SD, standard deviation; PSM, propensity score matching. Original cohort: N=47 and N=34 patients (group 1 and 2, respectively). N=51 e N=38 lesions (group 1 and 2, respectively).

Matched cohort: N=46 patients (groups 1 and 2). N=47 lesions (groups 1 and 2)

¹ Wilcoxon ranksum (Mann-Whitney).

² Chi square.

³ Fisher's exact test.

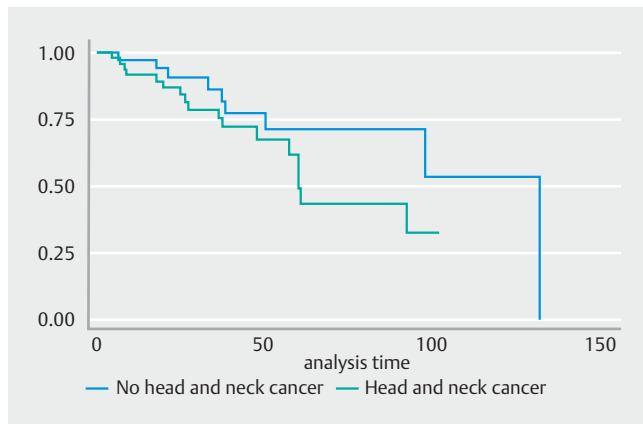
⁴ Student's t test.

corticoids for 4 weeks (starting at 30 mg/day oral prednisone tapered weekly to 20 mg/day, 10 mg/day and ending at 5 mg/day) or local steroid injection (triamcinolone 100 mg), according to an ongoing randomized controlled trial.

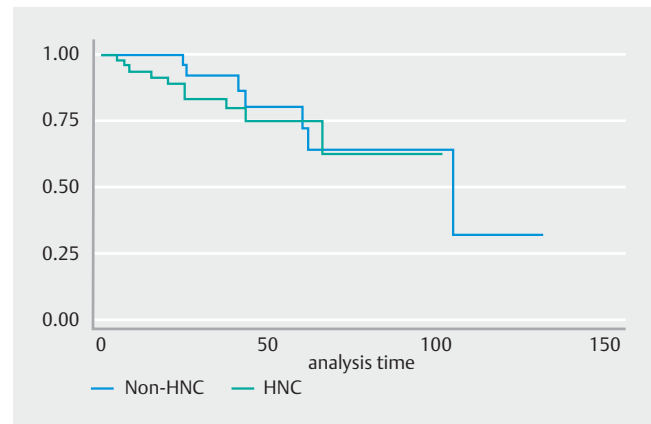
After propensity score matching (PSM) was performed, 46 patients and 47 lesions composed the matched cohort (► **Table 3**). Histological depth of invasion was significantly different before ($P=0.016$) and after ($P=0.047$) matching. Regarding curative resection, the distribution rate was not statistically different after matching ($P=0.254$). On the other hand, after pairing,

there were distinct means of lesion size between the two groups ($P=0.012$). Detailed PSM evaluation results are shown in ► **Appendix 1** and ► **Appendix 2**.

The median follow-up period for patients with HNSCC was 2.8 years and 3 years for patients without HNSCC. OS rates were similar in both groups (► **Fig. 2**). In the HNSCC group, 10 deaths (21.2%) were due to head and neck baseline cancer, on average 2 years after ESD. In the non-HNSCC, deaths were due to cardiovascular disease (2), 1 lung metastatic cancer (1), 1 liver hepatocellular carcinoma (1), progression of esophageal



► **Fig. 2** Overall survival rate. **P* (log rank) = 0.146



► **Fig. 3** Cancer-specific survival rate. **P* (log rank) = 0.507

cancer (2) and unknown cause (3). Cancer-specific survival rates are shown in ► **Fig. 3**.

Discussion

ESCC accounts for about 90% of esophageal cancers worldwide. Regions of high incidence include Eastern to Central Asia, East Africa and South America. In general, rates in men exceed those of women and is mainly associated with cigarette smoking and alcohol consumption. These risk factors in common probably reflect the correlation between HNSCC and ESCC, explained by the concept of field cancerization, in which exposure to these carcinogens results in the development of multiple dysplastic and malignant lesions. In our study, the non-HNSCC group had a high ratio of female patients and lower intake of alcohol and smoking. This finding might highlight others risk factors and incidence patterns that are not yet entirely understood, for example, poor nutritional status, low intake of fruits and vegetables, drinking beverages at high temperatures, and infection with human papillomavirus.

The goal of endoscopic oncological therapy by means of ESD is complete removal of early stage disease. Although ESD has been widely used in Japan for ESCC, in other countries, it is still considered a cumbersome and challenging procedure with a steep learning curve and high risk of complications. In our study, rates of overall curative resection, en bloc resection, R0 resection, and AEs were 71.9%, 97.7%, 92.1% and 10.1%, respectively, similar to other series of esophageal ESD [17–19]. Based on these results, esophageal ESD seems to be feasible in Western centers with a high success rate.

Apparently, this is the first study aimed to compare esophageal ESD in patients with and without primary HNSCC. Our results suggest that HNSCC background does not adversely affect the clinical outcome of patients with superficial ESCC managed by ESD. OS and complication rates were similar between the two groups and consistent with findings from previous studies [9, 17, 18, 20–31].

Patients with HNSCC had ESCC detected at a younger age and more frequently consumed alcohol and smoked. The majority of neoplastic lesions were flat (Paris classification 0-IIB),

which has a very low risk of deep SM invasion and is the most suitable morphological type to undergo endoscopic resection.

To reduce the impact of potential confounding factors and effects of selection bias, such as baseline clinicopathologic factors, PSM was applied to adjust the differences between the two groups. Results of histological invasion depth were consistent before and after PSM, which demonstrate that patients with HNSCC had ESCC detected at an earlier stage. However, the Paris classification was similar on the matched cohort (► **Appendix 2**), which can probably explain the similarity in curative resection rates after PSM. We speculated about possible reasons for the low curative resection rate (57.8%) found in the non-HNSCC group. It is possible that the more advanced stage of the resected lesions could partially explain this suboptimal result in this group of patients. In fact, in the non-HNSCC group, there were more lesions that invaded deeper in the submucosa (> 200 μ m), contributing to the lower curative resection rate observed in this group of patients.

Therefore, PSM indirectly supports that hypothesis that lesions detected in the high-risk group are more superficial and more likely to be cured with ESD. These findings may provide additional evidence that there is a beneficial effect of recommending screening endoscopy in this high-risk population and highlight the importance of systematic and carefully esophageal evaluation with virtual chromoendoscopy and lugol staining during endoscopy in patients with risk factors for esophageal neoplasms. Even though endoscopic resection indication criteria were the same between the two groups, in individuals HNSCC, esophageal lesions were more frequently shallow and confined into the mucosa layer. In our view, the lower curative resection rate observed in the non-HNSCC group can be partly explained by earlier diagnosis due to the effect of the screening program in patients with HNSCC.

The screening program might have prevented cancer-related mortality arising from the progress of ESCC in patients with HNSCC. Notwithstanding the above, there was no difference in OS. We hypothesize that the screening program may have affected ESCC-related mortality, but patients died mainly due to progression of head and neck disease.

Even though previous chemoradiation (CRT) in theory may jeopardize ESD results due to fibrosis, with increased risk of severe AEs, we found no difference in ESD outcomes between the two groups, which is in accord with some studies that have demonstrated that ESD was technically feasible and safe despite CRT-induced fibrotic changes [32–35].

The current study is not without limitations. Because it was retrospective study, significant biases may have affected patient selection and caused misclassification. Data were obtained from both units' databases and, although entered in a prospective fashion, some follow-up information from a few patients was missing. The study was performed in two tertiary centers that specialize in cancer treatment, particularly for HNSCC management, which may have resulted in both performance and selection bias and may compromise external validation of the results. To better compare the groups in terms of potential confounding factors and reduce biases, we performed the PSM. However, it should be noted that many other variables were not included in the current study, which may have led to certain biases. Another limitation of this study refers to the indication for EGD in the groups being compared. In patients with HNSCC, EGD was indicated as part of a surveillance program for esophageal squamous cell cancer, while most patients without HNSCC had some kind of symptoms, mostly dyspeptic ones. Finally, because not all patients underwent exactly the same pre-operative staging protocol, it is possible that this fact could partially explain the lower curative resection rate in the non-head-and-neck cancer group.

Conclusion

In conclusion, patients with HNSCC have earlier detection of ESCC compared with sporadic detection in non-HNSCC, probably due to the endoscopic screening. Previous history of chemoradiation and surgery for HNSCC does not affect procedure time, AEs and OS.

Competing interests

The authors declare that they have no conflict of interest.

References

- [1] Lim H, Kim DH, Jung HY et al. Clinical significance of early detection of esophageal cancer in patients with head and neck cancer. *Gut Liver* 2015; 9: 159–166
- [2] Kim JS, Kim BW, Shin IS. Efficacy and safety of endoscopic submucosal dissection for superficial squamous esophageal neoplasia: A meta-analysis. *Dig Dis Sci* 2014; 59: 1862–1869
- [3] Fukuhara T, Hiyama T, Tanaka S et al. Characteristics of Esophageal squamous cell carcinomas and Lugol-voiding lesions in patients with head and neck squamous cell carcinoma. *J Clin Gastroenterol* 2010; 44: e27–e33
- [4] Watanabe S, Ogino I, Inayama Y et al. Impact of the early detection of esophageal neoplasms in hypopharyngeal cancer patients treated with concurrent chemoradiotherapy. *Asia Pac J Clin Oncol* 2017; 13: e3–e10
- [5] Kandiah K, Chedgy FJQ, Subramaniam S et al. Early squamous neoplasia of the esophagus: The endoscopic approach to diagnosis and management. *Saudi J Gastroenterol* 2017; 23: 75–81
- [6] Arantes V, Albuquerque W, Salles JMP et al. Effectiveness of unsedated transnasal endoscopy with white-light, flexible spectral imaging color enhancement, and lugol staining for esophageal cancer screening in high-risk patients. *J Clin Gastroenterol* 2013; 47: 314–321
- [7] Ide E, Maluf-Filho F, Chaves DM et al. Narrow-band imaging without magnification for detecting early esophageal squamous cell carcinoma. *World J Gastroenterol* 2011; 17: 4408–4413
- [8] Pimentel-Nunes P, Ponchon T, Repici A et al. Endoscopic submucosal dissection: European Society of Gastrointestinal Endoscopy (ESGE) Guideline. *Endoscopy* 2015; 47: 829–854
- [9] Ono S, Fujishiro M, Niimi K et al. Long-term outcomes of endoscopic submucosal dissection for superficial esophageal squamous cell neoplasms. *Gastrointest Endosc* 2009; 70: 860–866
- [10] Rizvi Q, Ullah, Balachandran A, Koay D et al. Endoscopic management of early esophagogastric cancer. *Surg Oncol Clin N Am* 2017; 26: 179–191
- [11] Yamamoto H, Oyama T, Gotoda T. Endoscopic submucosal dissection. esophageal cancer and Barrett's esophagus 2015: 177–188
- [12] Arantes V, Albuquerque W, Freitas Dias CA et al. Standardized endoscopic submucosal tunnel dissection for management of early esophageal tumors (with video). *Gastrointest Endosc* 2013; 78: 946–952
- [13] Chow TL, Lee DTY, Choi CY et al. Prediction of simultaneous esophageal lesions in head and neck squamous cell carcinoma: A multivariate analysis. *Arch Otolaryngol – Head Neck Surg* 2009; 135: 882–885
- [14] Rice TW, Blackstone EH, Rusch VW. Editorial: 7th edition of the AJCC cancer staging manual: Esophagus and esophagogastric junction. *Ann Surg Oncol* 2010; 17: 1721–1724
- [15] Schlemper RJ, Riddell RH, Kato Y et al. The Vienna classification of gastrointestinal epithelial neoplasia. *Gut* 2000; 47: 251–255
- [16] Kuwano H, Nishimura Y, Oyama T et al. Guidelines for Diagnosis and Treatment of Carcinoma of the Esophagus April 2012 edited by the Japan Esophageal Society. *Esophagus* 2015; 12: 1–30
- [17] Chen Y, Zhao Y, Zhao X et al. Clinical outcomes of endoscopic submucosal dissection for early esophageal squamous cell neoplasms: a retrospective single-center study in China. *Gastroenterol Res Pract* 2016: 2016
- [18] Toyonaga T, Man-I M, East JE et al. 1,635 endoscopic submucosal dissection cases in the esophagus, stomach, and colorectum: Complication rates and long-term outcomes. *Surg Endosc* 2013; 27: 1000–1008
- [19] Fujinami H, Hosokawa A, Ogawa K et al. Endoscopic submucosal dissection for superficial esophageal neoplasms using the stag beetle knife. *Dis Esophagus* 2014; 27: 50–54
- [20] Mochizuki Y, Saito Y, Tsujikawa T et al. Combination of endoscopic submucosal dissection and chemoradiation therapy for superficial esophageal squamous cell carcinoma with submucosal invasion. *Exp Ther Med* 2011; 2: 1065–1068
- [21] Repici A, Hassan C, Carlino A et al. Endoscopic submucosal dissection in patients with early esophageal squamous cell carcinoma: results from a prospective Western series. *Gastrointest Endosc* 2010; 71: 715–721
- [22] Teoh A, Chiu P, Ngo D et al. Outcomes of endoscopic submucosal dissection versus endoscopic mucosal resection in management of superficial squamous esophageal neoplasms outside Japan. *J Clin Gastroenterol* 2010; 44: e190–e194
- [23] Yamashina T, Ishihara R, Uedo N et al. Safety and curative ability of endoscopic submucosal dissection for superficial esophageal cancers at least 50 mm in diameter. *Gastroenterol Endosc* 2014; 56: 515–521

- [24] Takahashi H, Arimura Y, Masao H et al. Endoscopic submucosal dissection is superior to conventional endoscopic resection as a curative treatment for early squamous cell carcinoma of the esophagus (with video). *Gastrointest Endosc* 2010; 72: 255–264
- [25] Choi JY, Park YS, Jung HY et al. Feasibility of endoscopic resection in superficial esophageal squamous carcinoma. *Gastrointest Endosc* 2011; 73: 881–889
- [26] Joo DC, Kim GH, Park DY et al. Long-term outcome after endoscopic submucosal dissection in patients with superficial esophageal squamous cell carcinoma: A single-center study. *Gut Liver* 2014; 8: 612–618
- [27] Park HC, Kim DH, Gong EJ et al. Ten-year experience of esophageal endoscopic submucosal dissection of superficial esophageal neoplasms in a single center. *Korean J Intern Med* 2016; 31: 1064–1072
- [28] Youn YH, Park J, Park JJ et al. Tu1580 clinical outcomes of endoscopic submucosal dissection for superficial esophageal squamous neoplasms. *Gastrointest Endosc* 2015; 81: AB517
- [29] Probst A, Aust D, Markl B et al. Early esophageal cancer in Europe: Endoscopic treatment by endoscopic submucosal dissection. *Endoscopy* 2015; 47: 113–121
- [30] Tsujii Y, Nishida T, Nishiyama O et al. Clinical outcomes of endoscopic submucosal dissection for superficial esophageal neoplasms: a multicenter retrospective cohort study. *Endoscopy* 2015; 47: 775–783
- [31] Lee CT, Chang CY, Tai CM et al. Endoscopic submucosal dissection for early esophageal neoplasia: A single center experience in South Taiwan. *J Formos Med Assoc* 2012; 111: 132–139
- [32] Nakahara T, Kushima R, Fujiyama Y et al. Chemoradiation therapy followed by endoscopic submucosal dissection for esophageal cancer. *Dig Dis Sci* 2008; 53: 3242–3245
- [33] Nakajo K, Yoda Y, Hori K et al. Technical feasibility of endoscopic submucosal dissection for local failure after chemoradiotherapy or radiotherapy for esophageal squamous cell carcinoma. *Gastrointest Endosc* 2018; 88: 637–646
- [34] Watanabe N, Jin M, Kimura Y et al. Salvage endoscopic submucosal dissection for the esophagus-localized recurrence of esophageal squamous cell cancer after definitive chemoradiotherapy. *Gastrointest Endosc* 2013; 79: 348–353
- [35] Victor CR, Fujiki FK, Takeda FR et al. Safety and effectiveness of chemotherapy for metastatic esophageal cancer in a community hospital in Brazil. *J Glob Oncol* 2019: 1–10

► **Appendix 1** Patients characteristics after matching.

	Group 1 (HNSCC)		Group 2 (no-HNSCC)		P
	N	%	N	%	
Alcohol consumption	46	100.0%	46	100.0%	1.000 ¹
No	4	8.7%	4	8.7%	
Yes	42	91.3%	42	91.3%	
Smoking	46	100.0%	46	100.0%	1.000 ¹
No	3	6.5%	4	8.7%	
Yes	43	93.5%	42	91.3%	
Adjuvant therapy	46	100.0%	46	100.0%	0.778
No	39	84.8%	38	82.6%	
Yes	7	15.2%	8	17.4%	
Mortality	46	100.0%	46	100.0%	0.109
No	29	63.0%	36	78.3%	
Yes	17	37.0%	10	21.7%	
	mean ± SD		mean ± SD		
Age (years)	59.2±9.41		58.74±9.82		0,820 ²

HNSCC, head and neck squamous cell carcinoma; SD, standard deviation.

P in the Chi-squared test

¹ Fisher's exact test.

² Student's t test.

► **Appendix 2** ESD outcomes after matching.

	Group 1 (HNSCC)		Group 2 (no-HNSCC)		P
	N	%	N	%	
Paris Classification	47	100.0%	47	100.0%	0.621 ¹
0-IIA	4	8.5%	2	4.3%	
0-IIB	40	85.1%	40	85.1%	
0-IIC	3	6.4%	5	10.6%	
Circumference	47	100.0%	47	100.0%	0.147 ¹
<50%	13	27.7%	14	29.8%	
50%-75%	19	40.4%	27	57.4%	
75%-100%	12	25.5%	5	10.6%	
100%	3	6.4%	1	2.1%	
Histological depth of invasion	47	100.0%	47	100.0%	0.047 ¹
Intramucosa	41	87.2%	31	66.0%	
Superficial submucosa	5	10.6%	11	23.4%	
Deep submucosa	1	2.1%	5	10.6%	
En bloc resection	47	100.0%	47	100.0%	1.000 ¹
No	1	2.1%	0	0.0%	
Yes	46	97.9%	47	100.0%	

► Appendix 2 (Continuation)

	Group 1 (HNSCC)		Group 2 (no-HNSCC)		P
	N	%	N	%	
R0 resection	47	100.0%	47	100.0%	0.677 ¹
No	4	8.5%	2	4.3%	
Yes	43	91.5%	45	95.7%	
Curative resection	47	100.0%	47	100.0%	0.254
No	11	23.4%	16	34.0%	
Yes	36	76.6%	31	66.0%	
Procedure-related complications					
Bleeding	46	100.0%	47	100.0%	-
No	46	100.0%	47	100.0%	
Perforation	47	100.0%	47	100.0%	0.495 ¹
No	45	95.7%	47	100.0%	
Yes	2	4.3%	0	0.0%	
Stricture	47	100.0%	47	100.0%	0.230
No	33	70.2%	38	80.9%	
Yes	14	29.8%	9	19.1%	
Local Recurrence	47	100.0%	47	100.0%	1.000 ¹
No	46	97.9%	47	100.0%	
Yes	1	2.1%	0	0.0%	
Metachronous tumor	47	100.0%	47	100.0%	1.000
No	38	80.9%	38	80.9%	
Yes	9	19.1%	9	19.1%	
Synchronous tumor	47	100.0%	47	100.0%	0.109
No	44	93.6%	39	83.0%	
Yes	3	6.4%	8	17.0%	
	mean ± SD		mean ± SD		
Resected specimen size (mm)	31.26 ± 16.89		23.04 ± 7.99		0.012 ²
Procedure time (min)	106.34 ± 39.87		102.02 ± 41.85		0.610 ³

ESD, endoscopic submucosal dissection; HNSCC, head and neck squamous cell carcinoma; SD, standard deviation

P in the chi-squared test

¹ Fisher's exact test.

² Mann-Whitney test.

³ Student's t test.