



# Conjoined Twins: A First-Trimester Diagnosis

Nikhil Gholkar<sup>1,2</sup> · Chanchal Singh<sup>1</sup> · Shweta Paliwal<sup>1</sup> · Anita Kaul<sup>1</sup>

Received: 6 September 2016 / Accepted: 29 September 2016 / Published online: 18 October 2016  
© Society of Fetal Medicine 2016

A 35-year-old G2P1L1 conceived on ovulation induction came to us for combined first trimester screening at 12 weeks. She had a viability scan at 8 weeks which had reported a single viable intrauterine pregnancy. On ultra-

sonography, two distinct fetuses who were joined to each other by the anterior chest and abdominal wall were seen (Fig. 1). On color Doppler, a single fetal heart was identified.

**Fig. 1** Two dimensional scan showing conjoined twins joined together by the chest and the anterior abdominal wall

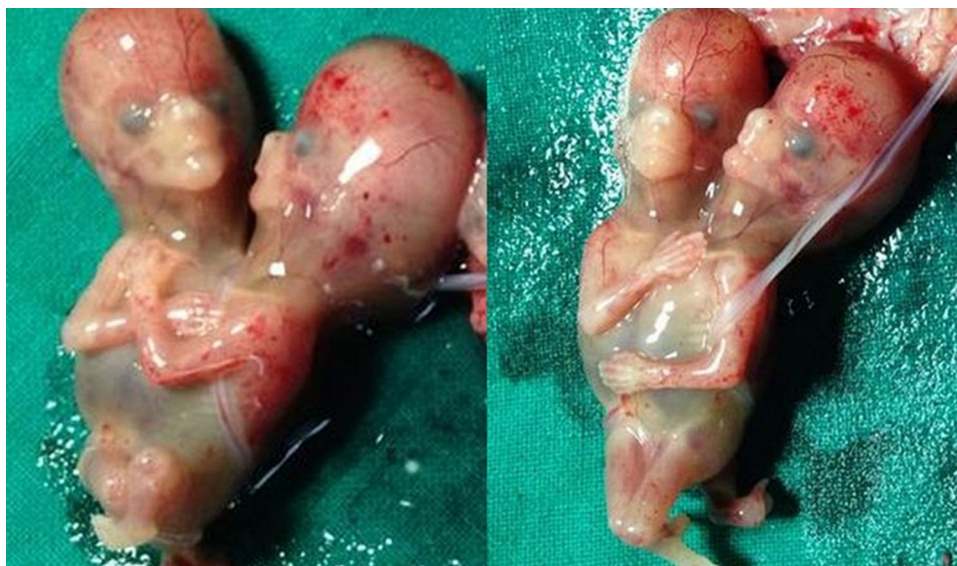


✉ Nikhil Gholkar  
drnikhilgholkar@gmail.com

<sup>1</sup> Apollo Centre for Fetal Medicine, Indraprastha Apollo Hospitals, New Delhi, India

<sup>2</sup> B 704, Parkland 1, Raheja Estate, Borivali East, Mumbai 400066, India

**Fig. 2** Post abortion examination of the fetuses confirmed the ultrasound diagnosis



## Discussion

Conjoined twinning is rare and occurs in about 1:50,000 gestations [1]. Thoracopagus including thoraco-omphalopagus (fused at the anterior chest and abdomen) and xiphopagus (fused at the anterior lower chest) are the most common types and account for about 75 % of cases [2]. The outcome in this type of conjoined twins is usually poor due to considerable sharing of major organs, particularly the heart and abnormal connections in the vasculature and gut [1, 3]. The couple opted for a termination of pregnancy after detailed counseling. Ultrasound findings were confirmed on examination of the fetuses post abortion (Fig. 2).

First trimester ultrasound diagnosis is possible at 12 weeks and helps in early counseling and provides a safe interval for decision making [4].

## Compliance with Ethical Standard

**Conflict of interest** None.

## References

1. Spitz L. Conjoined twins. *Prenat Diagn.* 2005;25(9):814–9.
2. Malone FD, D'Alton ME. Anomalies peculiar to multiple gestations. *Clin Perinatol.* 2000;27:1033–46.
3. Tannuri AC, Batatinha JA, Velhote MC, Tannuri U. Conjoined twins: twenty years' experience at a reference center in Brazil. *Clinics.* 2013;68(3):371–7.
4. Chen CP, Hsu CY, Su JW, Cindy Chen HE, Hwa-Ruey Hsieh A, Hwa-Jiun Hsieh A, et al. Conjoined twins detected in the first trimester: a review. *Taiwan J Obstet Gynecol.* 2011;50(4):424–31.