

Supporting Information
for DOI: 10.1055/s-0037-1611895

© 2019. Thieme. All rights reserved.

Georg Thieme Verlag KG, Rüdigerstraße 14, 70469 Stuttgart, Germany

Supporting Information

Aryl Ketone-Mediated Photoinduced Radical Coupling for the Alkylation of Benzazoles Employing Saturated Heterocyclic Compounds

Shin Kamijo*, Kaori Kamijo, and Toshihiro Murafuji

*Graduate School of Sciences and Technology for Innovation, Yamaguchi University, Yamaguchi
753-8512, Japan*

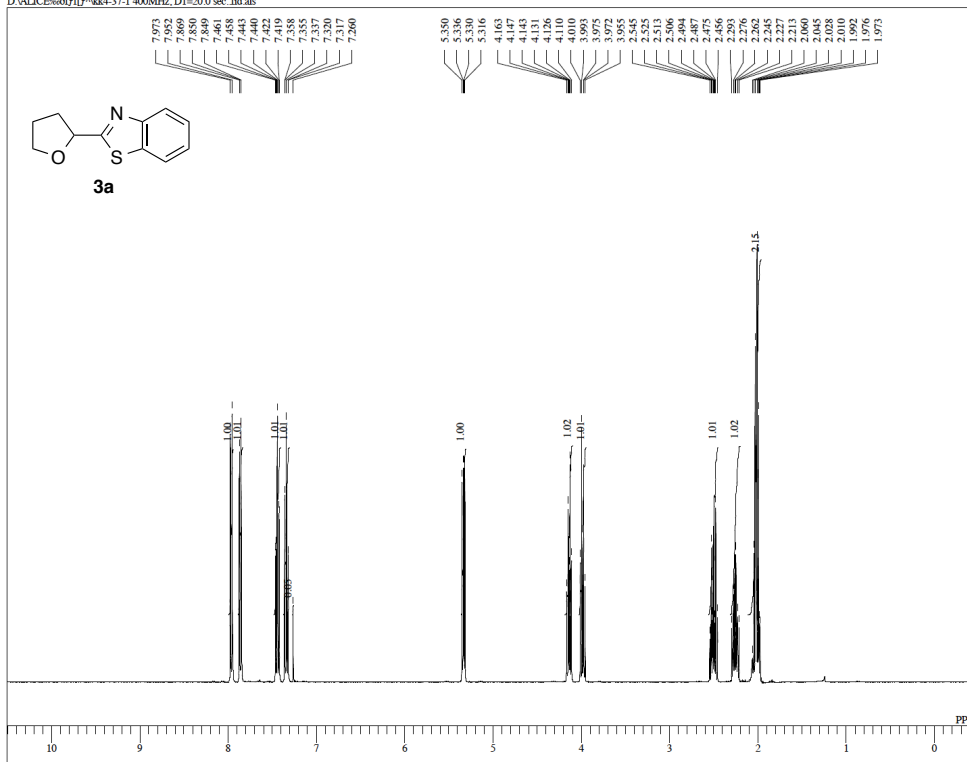
Contents

NMR Charts

2-(Tetrahydrofuran-2-yl)benzothiazole (3a)	S2
<i>N</i> -(<i>t</i> -Butoxycarbonyl)-2-(pyrrolidin-2-yl)benzothiazole (3b)	S3
<i>N</i> -(<i>t</i> -Butoxycarbonyl)-2-(piperidin-2-yl)benzothiazole (3c)	S4
<i>N</i> -(<i>t</i> -Butoxycarbonyl)-2-(azepan-2-yl)benzothiazole (3d)	S5
2-(2-Pyrrolidon-5-yl)benzothiazole (3e)	S6
2-(Tetrahydrothiophen-2-yl)benzothiazole (3f)	S7
2-(Tetrahydrofuran-2-yl)benzoxazole (5)	S8
2-(Tetrahydrofuran-2-yl)benzimidazole (7)	S9

KK4-37-1 (D1=20.0 sec)

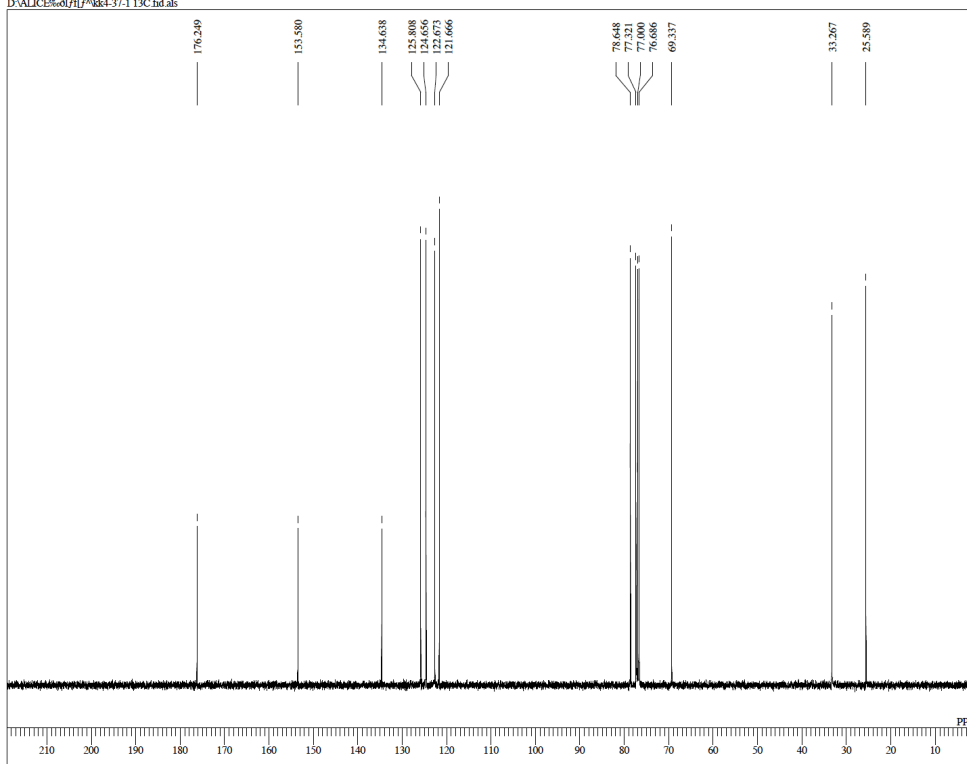
D:\ALICE\%of\ff\kk4-37-1 400MHz, D1=20.0 sec. f1d.als



DFILE kk4-37-1 400MHz, D1=20.0 sec. f1d.als
COMNT KK4-37-1 (D1=20.0 sec.)
DATIM 2016-04-11 16:05:27
OBNUC 1H
EXMOD zgpg30
OBFREQ 400.13 MHz
OBSET 2.47 KHz
OBFIN 0.97 Hz
POINT 32768
FREQU 822.68 Hz
SCANS 8
ACQTM 0.0000 sec
PD 0.0000 sec
PWL 10.00 usec
IRNUC
CTEMP 22.6 c
SLVNT CDCl3
XREF 7.26 ppm
BF 0.00 Hz
RGAIN 36

KK4-37-1 13C

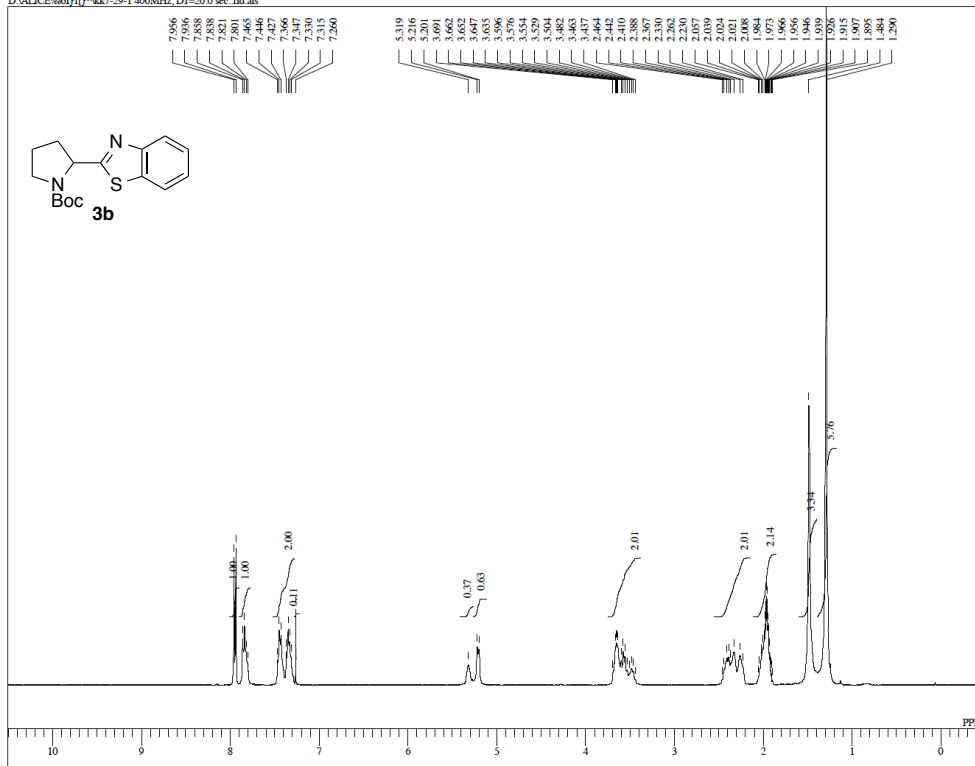
D:\ALICE\%of\ff\kk4-37-1 13C.f1d.als



DFILE kk4-37-1 13C.f1d.als
COMNT KK4-37-1 13C
DATIM 2016-04-11 16:15:04
OBNUC 13C
EXMOD zgpg30
OBFREQ 100.62 MHz
OBSET 3.83 KHz
OBFIN 6.40 Hz
POINT 32768
FREQU 24038.46 Hz
SCANS 121
ACQTM 0.0000 sec
PD 0.0000 sec
PWL 10.00 usec
IRNUC
CTEMP 23.4 c
SLVNT CDCl3
XREF 77.00 ppm
BF 1.00 Hz
RGAIN 203

KK7-29-1 (D1=20.0 sec.)

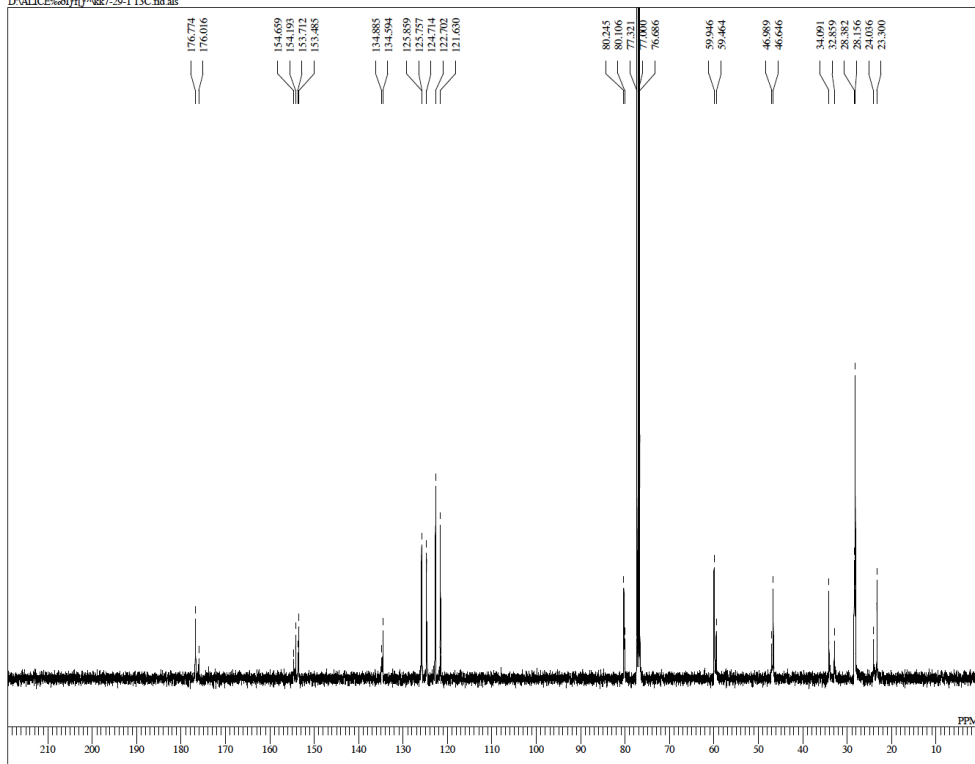
D:\ALICE\%of\ff\kk7-29-1 400MHz D1=20.0 sec. fid.als



DFILE kk7-29-1 400MHz D1=20.0 sec. fid.als
 COMNT KK7-29-1 (D1=20.0 sec.)
 DATIM 2016-12-14 12:26:29
 OBNUC 1H
 EXMOD zg30
 OBFRQ 400.13 MHz
 OBSET 2.47 KHz
 OBFIN 0.97 Hz
 POINT 32768
 FREQU 8233.68 Hz
 SCANS 8
 ACQTM 0.0000 sec
 PD 0.0000 sec
 PWI 10.00 usec
 IRNUC
 CTEMP 23.6 c
 SLVNT CDCl3
 EXREF 7.26 ppm
 BF 0.00 Hz
 RGAIN 36

KK7-29-1 13C

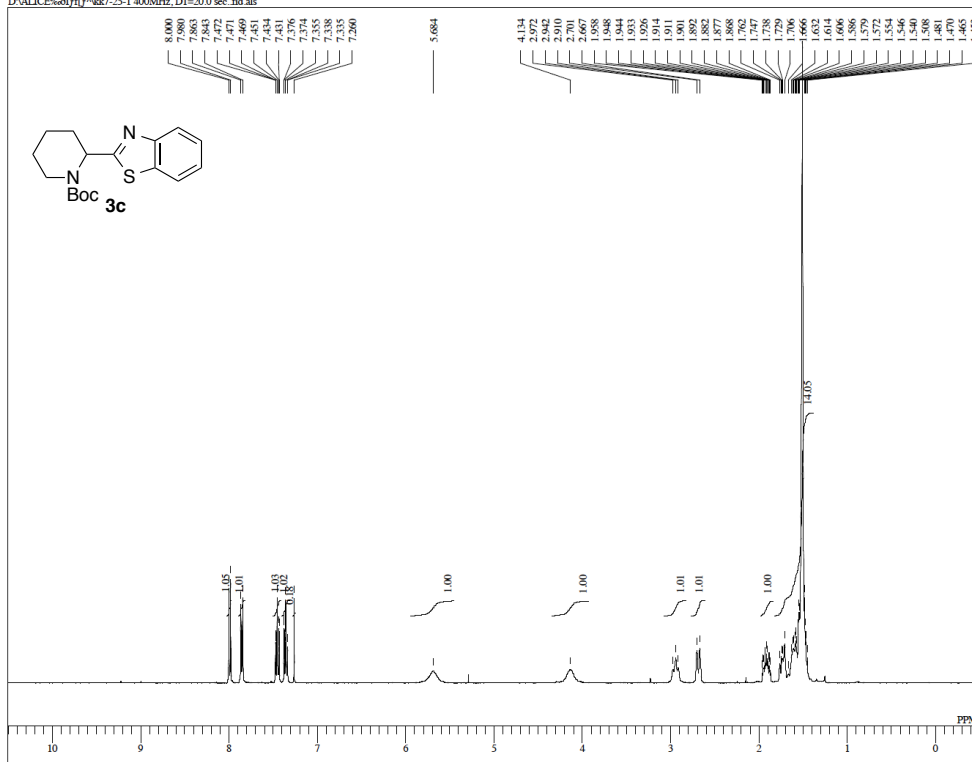
D:\ALICE\%of\ff\kk7-29-1 13C.fid.als



DFILE kk7-29-1 13C.fid.als
 COMNT KK7-29-1 13C
 DATIM 2016-12-14 12:59:21
 OBNUC 13C
 EXMOD zgpg30
 OBFRQ 100.62 MHz
 OBSET 3.83 KHz
 OBFIN 6.40 Hz
 POINT 32768
 FREQU 24038.46 Hz
 SCANS 560
 ACQTM 0.0000 sec
 PD 0.0000 sec
 PWI 10.00 usec
 IRNUC
 CTEMP 24.7 c
 SLVNT CDCl3
 EXREF 77.00 ppm
 BF 1.00 Hz
 RGAIN 203

KK7-25-1 (D1=20.0 sec.)

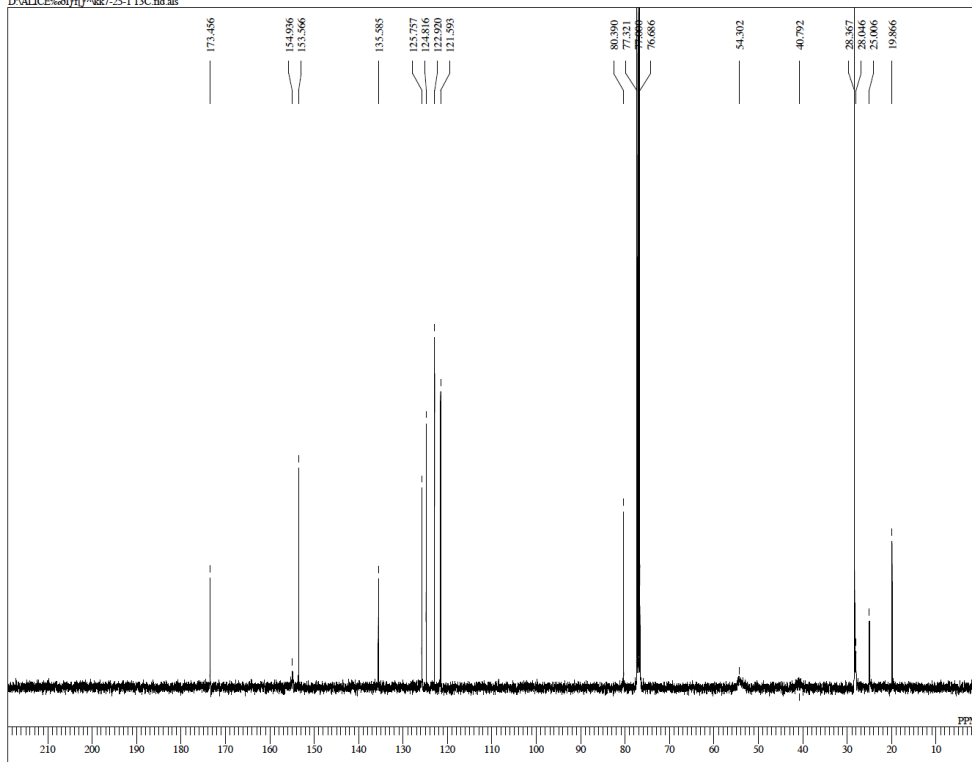
D:\ALICE\%of\ff\kk7-25-1 400MHz, D1=20.0 sec. fid.als



DFILE kk7-25-1 400MHz, D1=20.0 sec. fid.als
COMNT KK7-25-1 (D1=20.0 sec.)
DATIM 2016-12-06 11:15:49
OBNUC 1H
EXMOD zg30
OBFREQ 400.13 MHz
OBSET 2.47 KHz
OBFIN 0.97 Hz
POINT 32768
FREQU 823.68 Hz
SCANS 8
ACQTM 0.0000 sec
PD 0.0000 sec
PWI 10.00 usec
IRNUC
CTEMP 23.6 c
SLVNT CDCl3
XREF 7.26 ppm
BF 0.01 Hz
RGAIN 64

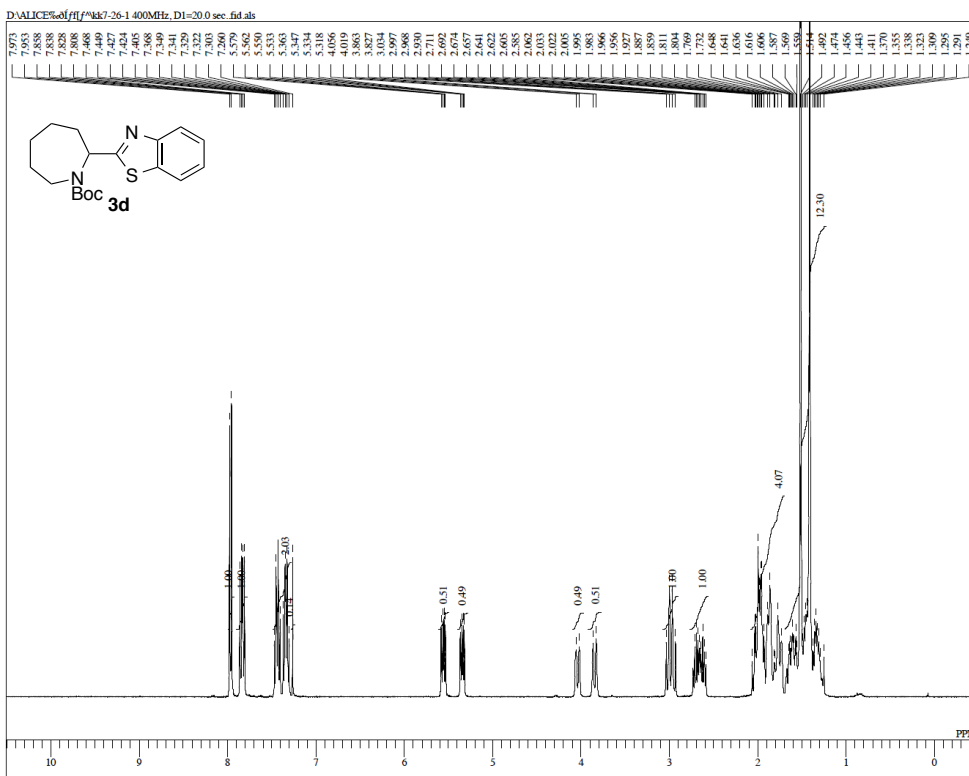
KK7-25-1 13C

D:\ALICE\%of\ff\kk7-25-1 13C.fid.als



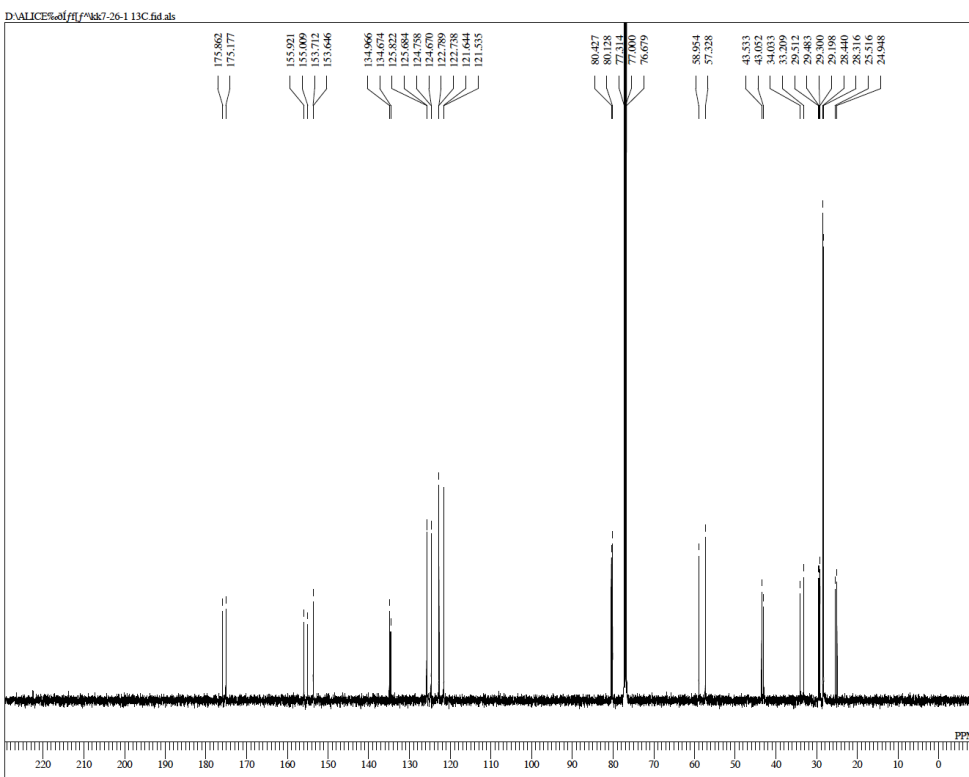
DFILE kk7-25-1 13C.fid.als
COMNT KK7-25-1 13C
DATIM 2016-12-06 11:58:05
OBNUC 13C
EXMOD zgpg30
OBFREQ 100.62 MHz
OBSET 3.83 KHz
OBFIN 6.40 Hz
POINT 32768
FREQU 24038.46 Hz
SCANS 680
ACQTM 0.0000 sec
PD 0.0000 sec
PWI 10.00 usec
IRNUC
CTEMP 24.6 c
SLVNT CDCl3
XREF 77.00 ppm
BF 1.01 Hz
RGAIN 203

KK7-26-1 (D1=20.0 sec)



DFILE kk7-26-1 400MHz.D1=20.0 sec.fid.als
COMNT KK7-26-1 (D1=20.0 sec.)
DATIM 2016-12-05 16:16:58
OBNUC 1H
EXMOD zg30
OBFRQ 400.13 MHz
OBSET 2.47 KHz
OBFIN 0.97 Hz
POINT 32768
FREQU 823.68 Hz
SCANS 8
ACQTM 0.0000 sec
PD 0.0000 sec
PWI 10.00 usec
IRNUC
CTEMP 23.9 c
SLVNT CDCl3
XREF 7.26 ppm
BF 0.01 Hz
RGAIN 64

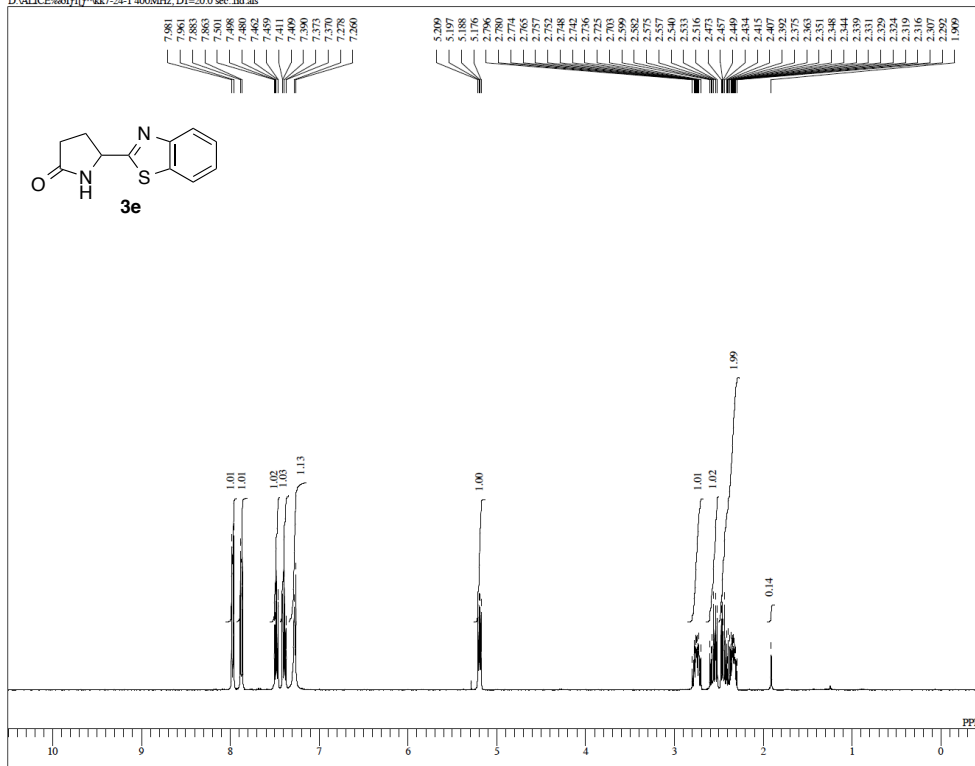
KK7-26-1 13C



DFILE kk7-26-1 13C.fid.als
COMNT KK7-26-1 13C
DATIM 2016-12-05 16:53:14
OBNUC 13C
EXMOD zgpg30
OBFRQ 100.62 MHz
OBSET 3.83 KHz
OBFIN 6.40 Hz
POINT 32768
FREQU 24038.46 Hz
SCANS 600
ACQTM 0.0000 sec
PD 0.0000 sec
PWI 10.00 usec
IRNUC
CTEMP 24.7 c
SLVNT CDCl3
XREF 77.00 ppm
BF 1.01 Hz
RGAIN 203

KK7-24-1 (D1=20.0 sec.)

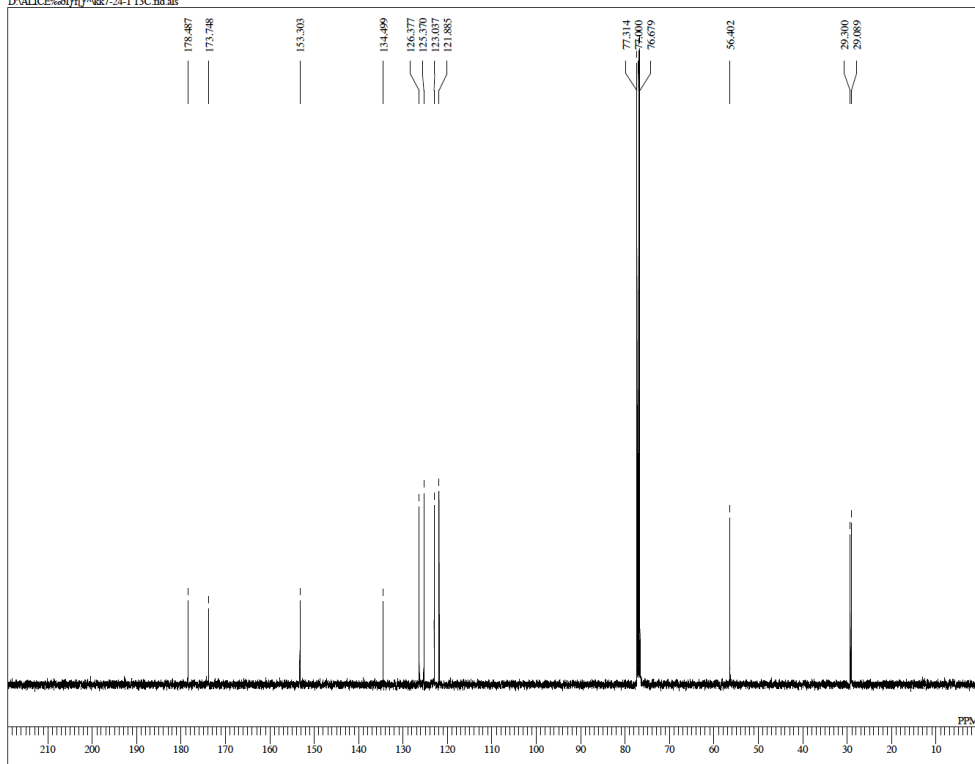
D:\ALICE\of\ff\kk7-24-1 400MHz.D1=20.0 sec.fid.als



D:\ALICE\of\ff\kk7-24-1 400MHz.D1=20.0 sec.fid.als
COMNT KK7-24-1 (D1=20.0 sec.)
DATIM 2016-12-02 12:05:20
OBNUC 1H
EXMOD zg30
OBFRQ 400.13 MHz
OBSET 2.47 KHz
OBFIN 0.97 Hz
POINT 32768
FREQU 8233.68 Hz
SCANS 8
ACQTM 0.0000 sec
PD 0.0000 sec
PWI 10.00 usec
IRNUC
CTEMP 23.6 c
SLVNT CDCl3
EXREF 7.26 ppm
BF 0.01 Hz
RGAIN 128

KK7-24-1 13C

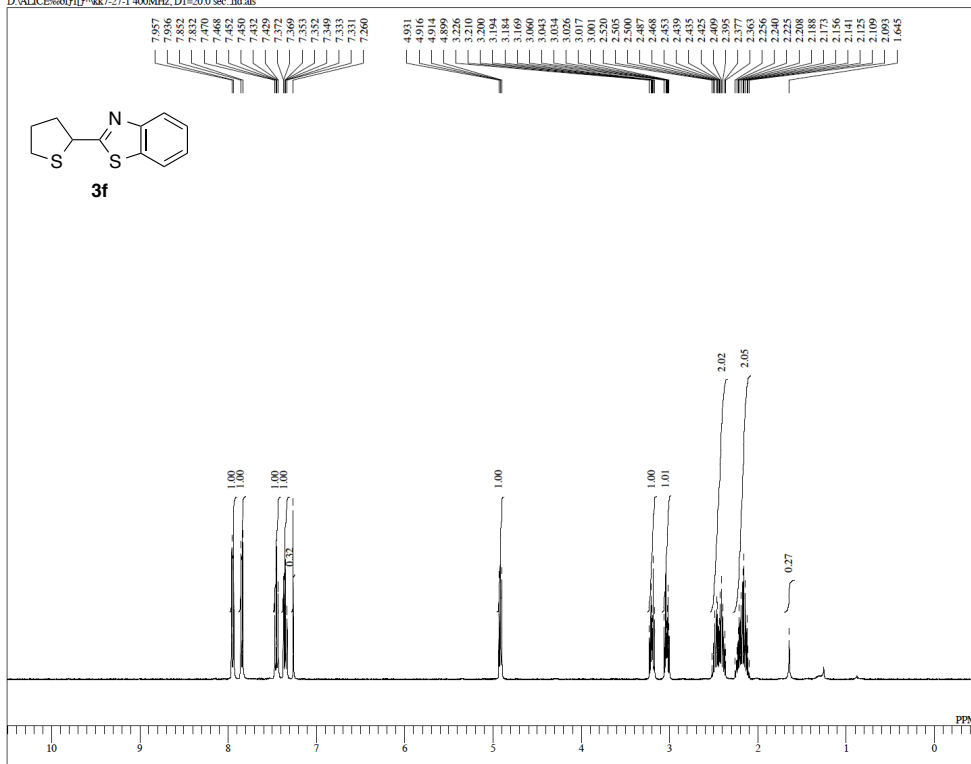
D:\ALICE\of\ff\kk7-24-1 13C.fid.als



D:\ALICE\of\ff\kk7-24-1 13C.fid.als
COMNT KK7-24-1 13C
DATIM 2016-12-02 12:28:46
OBNUC 13C
EXMOD zgpg30
OBFRQ 100.62 MHz
OBSET 3.83 KHz
OBFIN 6.40 Hz
POINT 32768
FREQU 24038.46 Hz
SCANS 313
ACQTM 0.0000 sec
PD 0.0000 sec
PWI 10.00 usec
IRNUC
CTEMP 24.6 c
SLVNT CDCl3
EXREF 77.00 ppm
BF 1.01 Hz
RGAIN 203

KK7-27-1 (D1=20.0 sec)

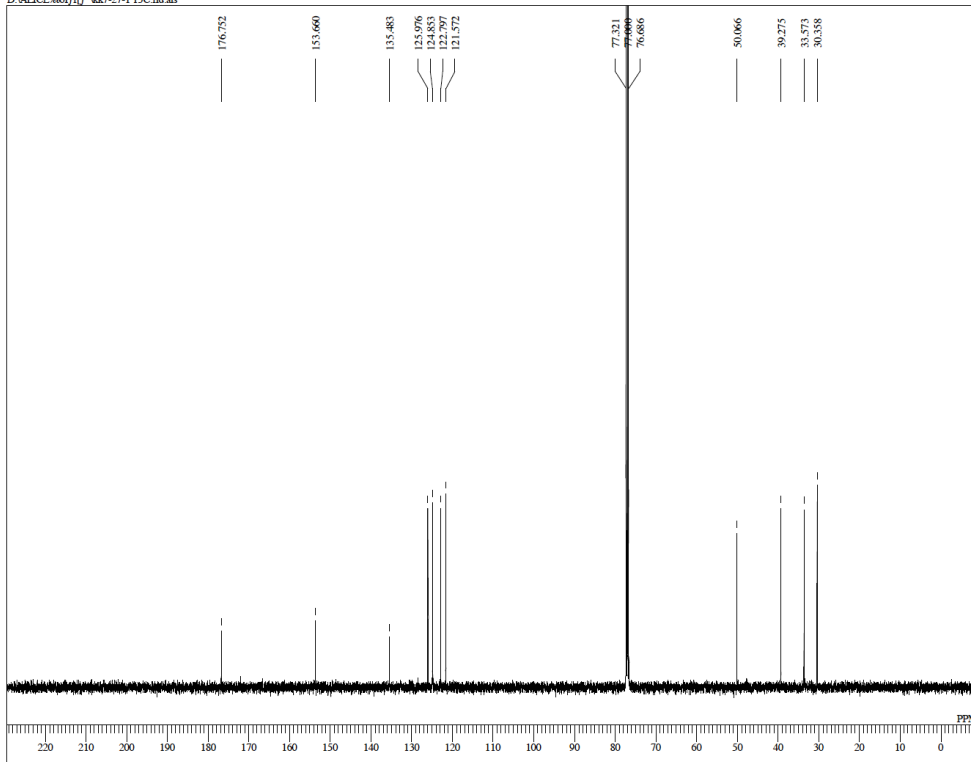
D:\ALICE\%of\ff\kk7-27-1 400MHz.D1=20.0 sec.fid.als



DFILE kk7-27-1 400MHz.D1=20.0 sec.fid.als
COMNT KK7-27-1 (D1=20.0 sec)
DATIM 2016-12-07 11:43:29
OBNUC 1H
EXMOD zgpg30
OBFREQ 400.13 MHz
OBSET 2.47 KHz
OBFIN 0.97 Hz
POINT 32768
FREQU 8223.68 Hz
SCANS 8
ACQTM 0.0000 sec
PD 0.0000 sec
PWI 10.00 usec
IRNUC
CTEMP 22.7 c
SLVNT CDCl3
XREF 7.26 ppm
BF 0.00 Hz
RGAIN 203

KK7-27-1 13C

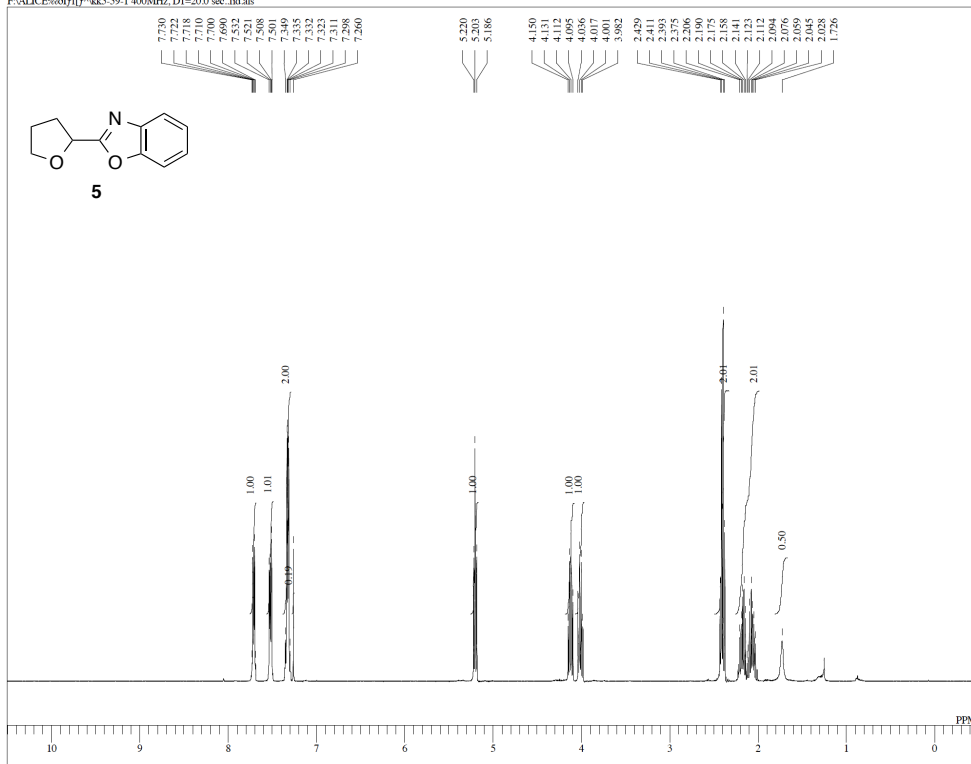
D:\ALICE\%of\ff\kk7-27-1 13C.fid.als



DFILE kk7-27-1 13C.fid.als
COMNT KK7-27-1 13C
DATIM 2016-12-07 12:07:32
OBNUC 13C
EXMOD zgpg30
OBFREQ 100.62 MHz
OBSET 3.83 KHz
OBFIN 6.40 Hz
POINT 32768
FREQU 24038.46 Hz
SCANS 400
ACQTM 0.0000 sec
PD 0.0000 sec
PWI 10.00 usec
IRNUC
CTEMP 23.8 c
SLVNT CDCl3
XREF 77.00 ppm
BF 1.00 Hz
RGAIN 203

KK5-59-1 (D1=20.0 sec.)

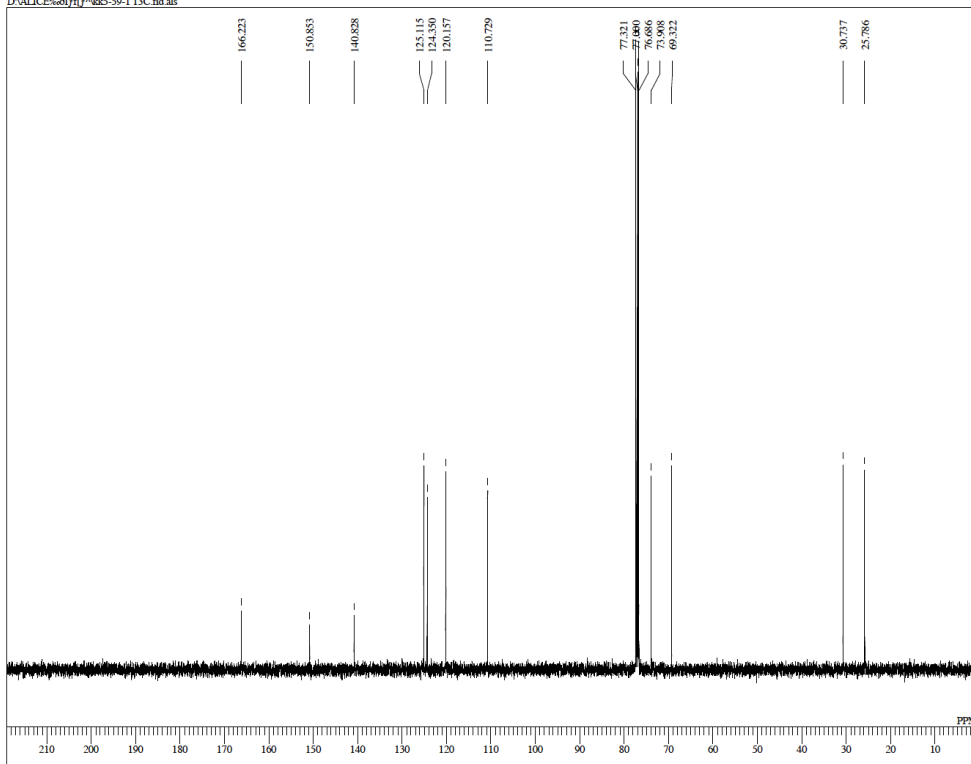
F:\ALICE\%of\ff\kk5-59-1 400MHz, D1=20.0 sec. fid.als



DFILE kk5-59-1 400MHz, D1=20.0 sec. fid.als
COMNT KK5-59-1 (D1=20.0 sec.)
DATIM 2016-07-04 17:16:21
OBNUC 1H
EXMOD zgpg30
OBFREQ 400.13 MHz
OBSET 2.47 KHz
OBFIN 0.97 Hz
POINT 32768
FREQU 823.68 Hz
SCANS 8
ACQTM 0.0000 sec
PD 0.0000 sec
PWI 10.00 usec
IRNUC
CTEMP 25.6 c
SLVNT CDCl3
EXREF 7.26 ppm
BF 0.00 Hz
RGAIN 144

KK5-59-1 13C

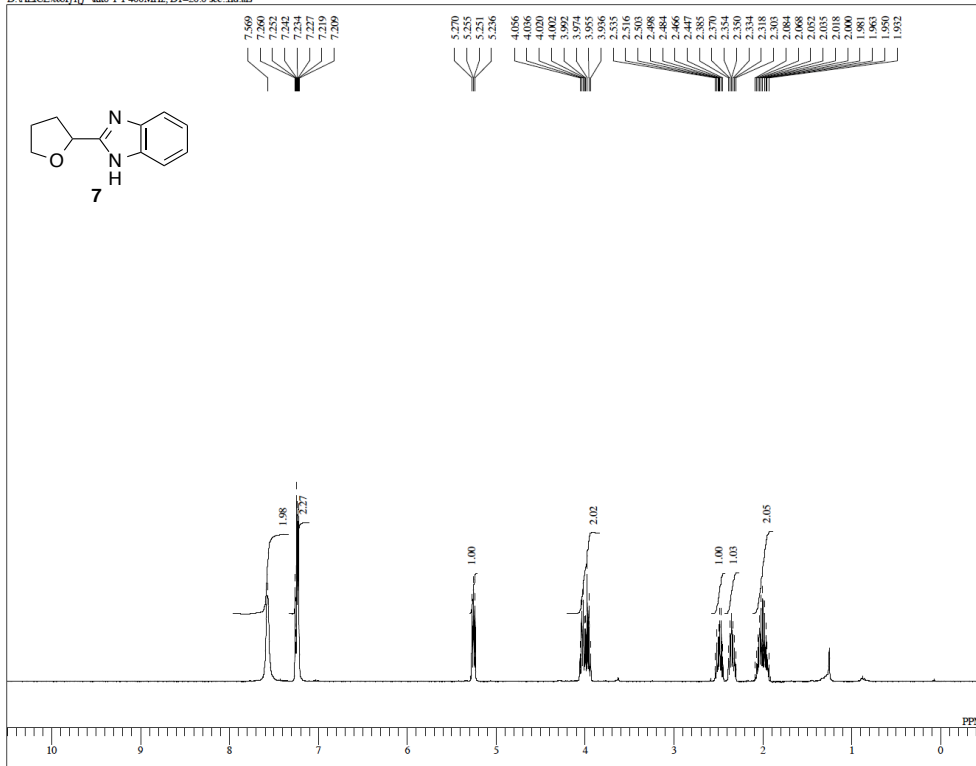
D:\ALICE\%of\ff\kk5-59-1 13C.fid.als



DFILE kk5-59-1 13C.fid.als
COMNT KK5-59-1 13C
DATIM 2016-07-04 17:23:38
OBNUC 13C
EXMOD zgpg30
OBFREQ 100.62 MHz
OBSET 3.83 KHz
OBFIN 6.40 Hz
POINT 32768
FREQU 24038.46 Hz
SCANS 101
ACQTM 0.0000 sec
PD 0.0000 sec
PWI 10.00 usec
IRNUC
CTEMP 26.2 c
SLVNT CDCl3
EXREF 77.00 ppm
BF 1.00 Hz
RGAIN 203

KK6-1-1 (D1=20.0 sec)

D:\ALICE\%of\ff\kk6-1-1 400MHz, D1=20.0 sec. fid.als

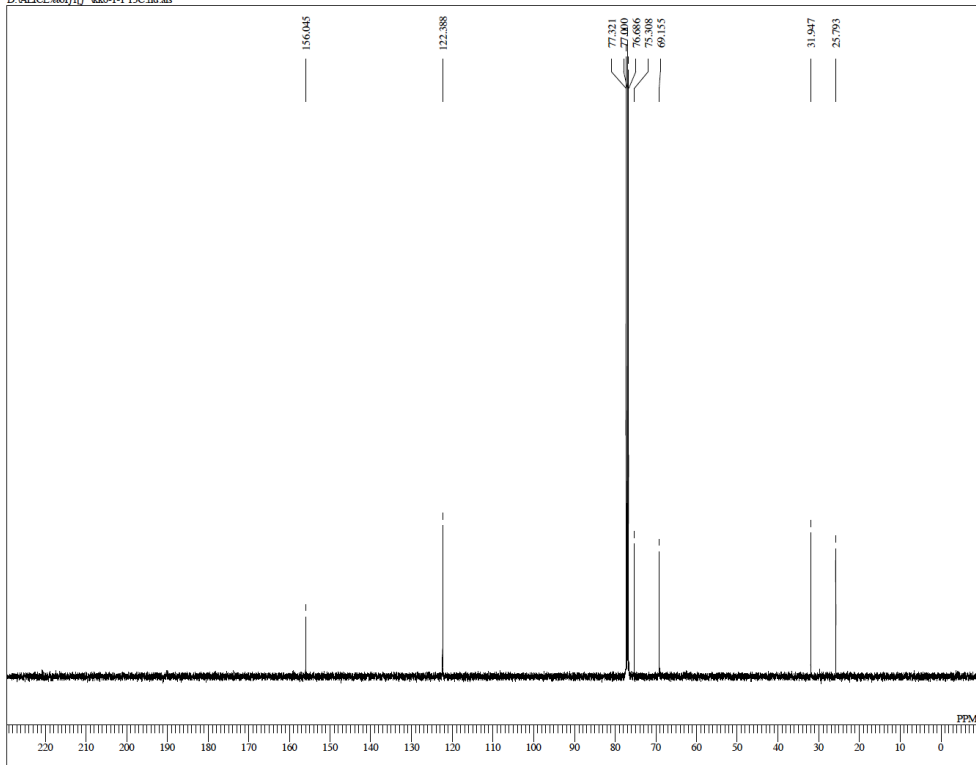


D:\ALICE\%of\ff\kk6-1-1 400MHz, D1=20.0 sec. fid.als

DFILE kk6-1-1 400MHz, D1=20.0 sec. fid.als
 COMNT KK6-1-1 (D1=20.0 sec.)
 DATIM 2016-07-07 18:02:29
 OBNUC 1H
 EXMOD zg30
 OBFREQ 400.13 MHz
 OBSET 2.47 KHz
 OBFN 0.97 Hz
 POINT 32768
 FREQU 8223.08 Hz
 SCANS 8
 ACQTM 0.0000 sec
 PD 0.0000 sec
 PWI 10.00 usec
 IRNUC
 CTEMP 25.2 e
 SLVNT CDCl3
 EXREF 77.26 ppm
 BF 0.00 Hz
 RGAIN 144

KK6-1-1 13C

D:\ALICE\%of\ff\kk6-1-1 13C fid.als



D:\ALICE\%of\ff\kk6-1-1 13C fid.als

DFILE kk6-1-1 13C
 COMNT KK6-1-1 13C
 DATIM 2016-07-07 18:20:16
 OBNUC 13C
 EXMOD zg30
 OBFREQ 100.62 MHz
 OBSET 3.83 KHz
 OBFN 6.40 Hz
 POINT 32768
 FREQU 24038.46 Hz
 SCANS 280
 ACQTM 0.0000 sec
 PD 0.0000 sec
 PWI 10.00 usec
 IRNUC
 CTEMP 25.9 e
 SLVNT CDCl3
 EXREF 77.00 ppm
 BF 1.00 Hz
 RGAIN 203