



# Outcomes of Cardiopulmonary Resuscitation in the Pediatric Intensive Care of a Tertiary Center

Ayman Al-Eyadhy<sup>1,2</sup> Mohammed Almazayad<sup>1,2</sup> Gamal Hasan<sup>2,3,4</sup> Nawaf AlKhudhayri<sup>5</sup>  
Abdullah F. ALSaeed<sup>5</sup> Mohammed Habib<sup>5</sup> Ali A. N. Alhaboob<sup>1,2</sup> Mohammed AlAyed<sup>5</sup>  
Yazeed AlSehibani<sup>5</sup> Fahad Alsohime<sup>1,2</sup> Majed Alabdulhafid<sup>1,2</sup> Mohamad-Hani Temsah<sup>1,2</sup>

<sup>1</sup> Department of Pediatrics, College of Medicine, King Saud University, Riyadh, Saudi Arabia

<sup>2</sup> Department of Pediatrics, Pediatric Intensive Care Unit, King Saud University Medical City, King Saud University, Riyadh, Saudi Arabia

<sup>3</sup> Department of Pediatrics, Assiut Faculty of Medicine, Assiut University, Assiut, Egypt

<sup>4</sup> Department of Pediatrics, Pediatric Critical Care Unit, Sheikh Shakhbout Medical City, Abu Dhabi, United Arab Emirates

<sup>5</sup> College of Medicine, King Saud University, Riyadh, Saudi Arabia

Address for correspondence Ayman Al-Eyadhy, MD, Department of Pediatrics, College of Medicine, Pediatric Intensive Care Unit, King Saud University, P.O. Box 2925, Riyadh 11461, Saudi Arabia (e-mail: aleyadhy@ksu.edu.sa).

J Pediatr Intensive Care 2023;12:303–311.

## Abstract

Understanding the factors affecting survival and modifying the preventable factors may improve patient outcomes following cardiopulmonary resuscitation (CPR). The aim of this study was to assess the prevalence and outcomes of cardiac arrest and CPR events in a tertiary pediatric intensive care unit (PICU). Outcomes of interest were the return of spontaneous circulation (ROSC) lasting more than 20 minutes, survival for 24 hours post-CPR, and survival to hospital discharge. We analyzed data from the PICU CPR registry from January 1, 2011 to January 1, 2018. All patients who underwent at least 2 minutes of CPR in the PICU were included. CPR was administered in 65 PICU instances, with a prevalence of 1.85%. The mean patient age was 32.7 months. ROSC occurred in 38 (58.5%) patients, 30 (46.2%) achieved 24-hour survival, and 21 (32.3%) survived to hospital discharge. Younger age ( $p < 0.018$ ), respiratory cause ( $p < 0.001$ ), bradycardia ( $p < 0.018$ ), and short duration of CPR ( $p < 0.001$ ) were associated with better outcomes, while sodium bicarbonate, norepinephrine, and vasopressin were associated with worse outcome ( $p < 0.009$ ). The off-hour CPR had no impact on the outcome. The patients' cumulative predicted survival declined by an average of 8.7% for an additional 1 minute duration of CPR ( $p = 0.001$ ). The study concludes that the duration of CPR, therefore, remains one of the crucial factors determining CPR outcomes and needs to be considered in parallel with the guideline emphasis on CPR quality. The lower survival rate post-ROSC needs careful consideration during parental counseling. Better anticipation and prevention of CPR remain ongoing challenges.

## Keywords

- ▶ cardiopulmonary resuscitation
- ▶ pediatric
- ▶ survival
- ▶ pediatric intensive care unit
- ▶ Saudi

received

May 4, 2021

accepted after revision

July 4, 2021

article published online

July 30, 2021

DOI <https://doi.org/>

10.1055/s-0041-1733855.

ISSN 2146-4618.

© 2021. The Author(s).

This is an open access article published by Thieme under the terms of the Creative Commons Attribution-NonDerivative-NonCommercial-License, permitting copying and reproduction so long as the original work is given appropriate credit. Contents may not be used for commercial purposes, or adapted, remixed, transformed or built upon. (<https://creativecommons.org/licenses/by-nc-nd/4.0/>)

Georg Thieme Verlag KG, Rüdigerstraße 14, 70469 Stuttgart, Germany

## Introduction

The prevalence of cardiopulmonary resuscitation (CPR) in hospitalized children in pediatric wards and pediatric intensive care units (PICU) varies from 2 to 6.<sup>1</sup> Alten et al reported a cardiac arrest prevalence of 3.1% among 15,908 cardiac PICU encounters.<sup>2</sup> Over the past decade, a significant increase in CPR events has occurred in the PICU compared with the wards.<sup>3</sup> Nevertheless, pediatric resuscitation represents an underappreciated subject, as reported by a recent systematic analysis.<sup>4</sup> Moreover, the outcomes of cardiac arrest in pediatric patients depend on multiple factors, including the quality of the CPR and postresuscitation care. Improvements in these factors are associated with improvements in the rates of return of spontaneous circulation (ROSC) by up to 75%.<sup>5,6</sup>

Survival to hospital discharge is an area of intense interest in the resuscitation literature. For example, Topjian et al, in their systematic review, reported a wide range of 25 to 50% survival and discharge from hospital in pediatric patients after CPR.<sup>7</sup> Higher rates of CPR survival to discharge have also been reported in pediatric cardiac ICUs. One report from a cardiac center showed a rate of survival to discharge as high as 50%.<sup>8</sup> A collective review of pediatric CPR cases reported better outcomes for respiratory cases, with 75% of these patients surviving to discharge compared with only 13% of cardiac cases.<sup>9,10</sup>

CPR duration is one key factor affecting the CPR outcome. The longer the CPR is performed, the less chance the patient has for survival. For instance, a CPR duration of more than 15 to 20 minutes was predicted to yield a poor outcome, while a CPR duration of less than 10 minutes was predicted to yield a better outcome.<sup>11,12</sup> However, performing CPR for more than 20 minutes is not always futile. Thus, other key factors, such as CPR quality and postresuscitation care, are of similar importance. Matos et al illustrated that 12% of patients undergoing CPR for more than 35 minutes survived.<sup>12</sup> Therefore, continuing CPR after the 20 minutes mark may yield a favorable neurological outcome for patients who would have died had CPR not been continued.<sup>12</sup> All these studies indicate that the duration of CPR is an important consideration. However, CPR duration is not independent of other factors that also affect outcomes, such as the CPR quality and the setting of the CPR events.

The observed differences in survival rates suggest that the outcome of CPR is a moving target, with various factors that require further exploration. In this study, we assessed the prevalence and outcomes of CPR in the PICU and explored the factors affecting CPR outcomes, including sex, age, causes of cardiac arrest, diagnoses, cardiac arrest rhythm, working hours, duration of the CPR time, and medications.

## Materials and Methods

### Patients and Data Collection

This retrospective cohort study was conducted in the PICU of King Khalid University Hospital. Inclusion criteria were patients ranging in age from 0 to 14 years old who were admitted to the PICU, underwent CPR after PICU admission,

and had CPR for at least 2 minutes.<sup>13</sup> Patients with incomplete data were excluded. We included all consecutive patients who met the inclusion criteria during the study period from January 1, 2011 to January 1, 2018. Outcomes of interest were a return of spontaneous circulation (ROSC) lasting more than 20 minutes, survival for 24-hour post-CPR, and survival to hospital discharge.

The data were retrospectively collected from the PICU CPR registry and electronic medical records. The collected data included demographic variables such as age, weight, and sex, and the clinical variables such as type of arrest, diagnosis, first documented rhythm, duration of CPR, time of arrest, and medications used during CPR. The working hours were defined as 07:00 A.M. to 16:00 P.M. during weekdays, while the remaining hours were considered on-call hours.

### Statistical Analysis

SPSS IBM v24 was used to statistically analyze the data. Means and standard deviations were used to describe continuous variables such as age and weight, while frequencies and percentages were employed to describe categorical variables such as sex and treatments. The Chi-square test was used to assess the association between categorical variables. The independent samples *t*-test was used to assess statistical differences in continuous variables across the patients' dichotomous survival levels. The Cochran's Q Chi-square test was also used to assess the association between children's repeated survival measures over time (immediate, at 24 hours, and at discharge).

Because of the repeated survival measures and the declining survival of children in the PICU after cardiopulmonary arrest over time, we analyzed the repeated binary survival measures using the generalized estimating equation (GEE) logistic regression analysis. The GEE logistic regression analysis is a repeated measures analysis of survival over time. We employed the GEE quasi-likelihood estimation method as a default. However, the model was further evaluated for goodness of fit by using the quasi-information criterion and Akaike's information criterion compared with an empty model with no predictors. The association between the analyzed predictors of children's survival over time was expressed as an exponential distribution ( $\beta$ ). Figures were created by using SPSS and Excel programs. The  $\alpha$  significance level was set to 0.05 throughout the analysis.

### Ethical Considerations

The study was initiated upon receiving approval from the institutional review board (IRB) of the College of Medicine at King Saud University, Kingdom of Saudi Arabia. Confidentiality of patient identifications was maintained by converting the medical record numbers to coded numbers with no identifiers. Therefore, patient consent was waived by the IRB.

## Results

► **Table 1** summarizes the demographic and other characteristics of the study cohort. A total of 70 cases that fit the inclusion criteria were found in the PICU CPR registry. We

**Table 1** Demographics and characteristics of children admitted to the pediatric intensive care unit and requiring cardiopulmonary resuscitation

Variable	Frequency	Percentage
Sex		
Male	37	56.9
Female	28	43.1
Age (mo)		
Mean ( $\pm$ SD)	32.7 (51.1)	
Median (Q25–Q75)	6 (3–35)	
< 6 mo	33	50.8
> 6–12 mo	7	10.8
13–48 mo	11	16.9
> 48 mo	14	21.5
Weight (kg), mean ( $\pm$ SD)	11.10 ( $\pm$ 13.7)	
Causes of cardiac arrest		
Cardiac	26	40
Respiratory	39	60
Diagnoses		
CVS	5	7.7
Respiratory	23	35.4
Sepsis	14	21.5
Others	23	35.4
Pre-arrest endotracheal tube	55	84.6
Pre-arrest noninvasive ventilation	2	3.1
Time of arrest		
Working hours	31	47.7
On-call hours	34	52.3

Abbreviations: CVS, cardiovascular system; SD, standard deviation.

excluded five cases that had missing data. Thus, a total of 65 cases were included in the analysis. Although the mean patient age was  $32.7 \pm 51.1$  months, 40 (61.6%) patients were younger than 12 months. The study cohort consisted of 37 (56.9%) males and 23 (43.1%) females. Most of the presenting illnesses were respiratory (23 cases, 35.4%), and a respiratory cause of arrest was attributed to 39 (60%) cases. Furthermore, 55 (84.6%) patients were intubated and mechanically ventilated before the cardiopulmonary arrest. The time of arrest was almost equally distributed, with 34 (52.3%) and 31 (47.7%) arrests occurring during working hours and on-call hours, respectively.

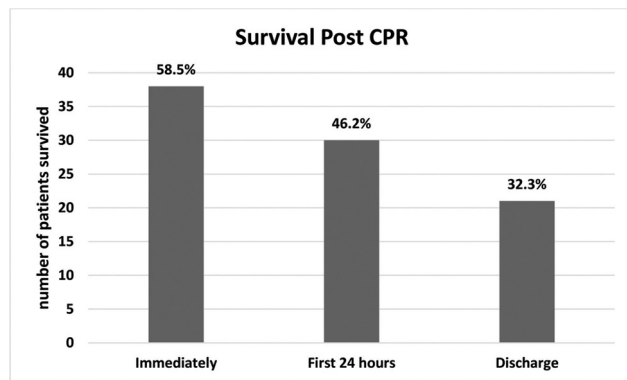
The CPR details, medications used, and outcomes are shown in **Table 2**. Bradycardia was the most common cardiac rhythm during the arrest, occurring in 58 (89.2%) cases. The mean duration of CPR was  $18.34 \pm 15.9$  minutes. While 38 (58.5%) patients achieved ROSC post-CPR, only 30 (46.2%) patients survived for more than 24 hours, and only 21 (32.3%) patients survived to discharge, as shown in **Fig. 1**.

**Table 2** Cardiopulmonary resuscitation events, medications, and outcomes of children who underwent cardiopulmonary resuscitation in the pediatric intensive care unit

Variables	Frequency	Percentage
Cardiac arrest rhythm		
Sinus bradycardia	58	89.2
Shockable tachyarrhythmia	3	4.6
Nonshockable dysrhythmias	4	6.2
Duration of the CPR time (min)		
Mean ( $\pm$ SD)	18.3 (15.9)	
Median (IQR)	12 (61)	
Immediate CPR outcome; ROSC	38	58.5
First 24 h outcome; survived	30	46.2
Discharge final outcome; survived	21	32.3
Medication (IV bolus)		
Epinephrine	59	90.8
Sodium bicarbonate	21	32.3
Atropine	17	26.2
Normal saline	16	24.6
Calcium	12	18.5
Lidocaine	3	4.6
Adenosine	2	3.1
Albumin 5%	2	3.1
Amiodarone	1	1.5
Magnesium sulfate	1	1.5
Medication (IV infusion)		
Epinephrine	38	58.5
Norepinephrine	20	30.8
Dopamine	18	27.7
Dobutamine	13	20
Vasopressin	6	9.2
Phenylephrine	6	9.2
Amiodarone	3	4.6
Sodium bicarbonate	1	1.5

Abbreviations: CPR, cardiopulmonary resuscitation; IQR, interquartile range; ROSC, return of spontaneous circulation; SD, standard deviation.

The bivariate analysis and comparison between patients with and without ROSC after CPR revealed that a younger age was significantly associated with a better ROSC outcome after CPR. By contrast, deceased children were significantly older ( $51.8 \pm 60.9$  months) than children who survived ( $19.1 \pm 38.1$  months) and successfully achieved ROSC ( $p = 0.018$ ). For further analysis, the patients were classified into different age intervals to account for outliers. This classification revealed that children older than 48 months



**Fig. 1** Survival after CPR, including immediate return of spontaneous circulation, survival for the first 24 hours after CPR, and survival at time of discharge (Chi-square = 25.5,  $p$ -value < 0.001).

were predicted to have worse outcomes after CPR than were children within younger age intervals ( $p = 0.015$ ).

► **Table 3** shows the detailed bivariate analysis and comparisons between patients with and without ROSC after CPR. ROSC outcomes were better for patients with a respiratory cause than with a cardiac cause of arrest; 30 (78.9%) patients who survived had a respiratory cause of the arrest ( $p < 0.001$ ). By contrast, those with sepsis were marginally less likely to survive CPR than children with cardiovascular diseases, respiratory diseases, and other diseases. The CPR duration was longer for deceased patients ( $31.2 \pm 15$  minutes) than for patients who reached ROSC ( $9.2 \pm 8.5$  minutes). Treatments with a sodium bicarbonate bolus or with norepinephrine or vasopressin infusions during CPR were significantly associated with higher mortality and less ROSC.

The GEE logistic regression analysis was conducted by setting the patients as subjects and the time as a repeated measure, after transposing the data into the long format yielding  $65 \times 3 = 195$  patient records. The analysis revealed that bradycardia, duration of CPR, and absence of norepinephrine infusion were significantly associated with higher accumulative survival until discharge (► **Table 4**). Moreover, the analysis model showed that CPR duration predicted significantly shorter survival: an increase in the CPR duration of 1 minute decreased the children's cumulative predicted survival by an average of 8.7% ( $p = 0.001$ ). The GEE analysis also showed that an increase in the CPR duration from 3 to 6 minutes resulted in a nearly steady predicted survival; however, survival declined for CPR durations of 7 to 9 minutes and plunged more rapidly for CPR durations of 10 minutes or more. This negative association between CPR duration and survival was statistically significant when considering the other factors in the model (► **Fig. 2**).

## Discussion

This retrospective study involved PICU patients and included 65 documented instances of at least 2 minutes of CPR. The purpose of the study was to assess the frequency, survival, and variables affecting CPR outcomes at a PICU. In our study, 38 (58.5%) patients achieved ROSC, which is consistent with

two previous studies.<sup>14,15</sup> Our examination of 24-hour survival also revealed that 30 (46.2%) patients reached 24-hour survival. This value was similar to the 58.4% 24-hour survival rate reported in a multicenter study investigating survival trends on weekends compared with weekdays, but it was slightly lower than the 64% survival in PICU patients 24 hours after CPR reported in another multicenter study conducted in the United States.<sup>12,13</sup> The contrasting results between the survivals to discharge in these studies may be due to multiple factors. One explanation might be the lack of reporting data related to CPR quality and postcardiac arrest care. Differences in the inclusion criteria could also contribute to these varying outcomes. For instance, we excluded patients who had undergone CPR for less than 2 minutes, and this exclusion might have lowered the survival to discharge reported by us and by Bhanji et al,<sup>13</sup> compared the rate reported by Matos et al.<sup>12</sup>

In our study, 21 (32.3%) patients survived to discharge. This rate was slightly below the rates reported in three previous studies, which showed survival to discharge rates of 45, 36.2, and 34.8% after CPR in PICUs.<sup>1,11,13</sup> Variations in survival rates to discharge are expected, as differences in diagnoses, severity, comorbidity, and age can influence the survival to discharge rates. Once again, the differences in inclusion criteria and the lack of consistent reporting of CPR quality could contribute to the discrepancy in results seen in the reported survival rates.<sup>16–18</sup> High-quality CPR is the first take-home message of the American Heart Association (AHA) in their 2020 Pediatric Basic and Advanced Life Support update.<sup>19</sup> The literature confirms that the key components of high-quality CPR are applying adequate chest compression rate and depth, minimizing CPR interruptions, allowing full chest recoil between compressions, and preventing excessive ventilation.<sup>19</sup>

We noticed that ROSC was higher among our patients who were less than 6 months of age, as 22 (57.9%) patients under 6 months of age achieved ROSC versus 16 (42.1%) patients older than 6 months. This is consistent with a significantly higher survival rate in infants and neonates (53.2 and 62%, respectively) compared with older children (29.8–41.2%) reported in a recent study conducted in the United States.<sup>20</sup> Another recently published study on CPR epidemiology in PICUs across England revealed similar results.<sup>21</sup> By contrast, worse outcomes were reported for infants than for older children following out-of-hospital CPR.<sup>22–24</sup> Infants have less respiratory reserve and are therefore likely to have a respiratory cause for CPR. Thus, any delay in recognizing or providing respiratory support during out-of-hospital CPR can be detrimental, whereas patients in the PICU are carefully monitored and are less likely to have a delay in respiratory support. Therefore, lower survival rates were correlated with the advancing age of patients who underwent CPR in the PICU setting compared with out-of-hospital CPR.

Our study showed that outcomes were significantly better when the cause of arrest was respiratory related. A majority of patients (78.9%) who underwent CPR and survived had a respiratory cause of arrest. This is compatible with results from another study showing a better survival outcome for

**Table 3** Bivariate analysis of clinical characteristics associated with an immediate revival after cardiopulmonary resuscitation in the pediatric intensive care unit

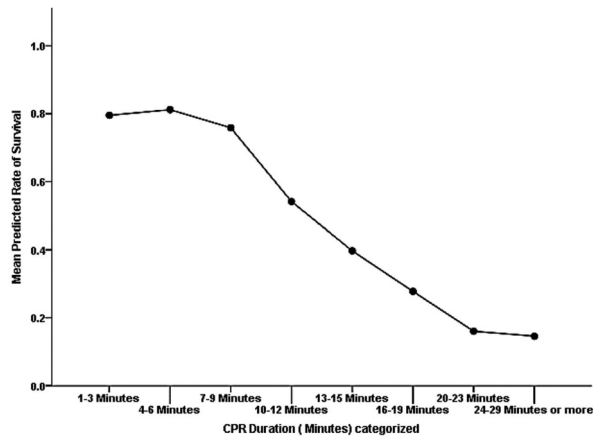
	(Outcome) ROSC		Test statistic	p-Value
	Deceased n = 27	Revived n = 38		
<b>Sex</b>				
Male	15 (55.6%)	22 (57.9%)	$\chi^2(1) = 0.04$	0.851
Female	12 (44.4%)	16 (42.1%)		
<b>Age (mo), mean (<math>\pm</math>SD)</b>				
$\leq 6$ mo	11 (40.7%)	22 (57.9%)	$\chi^2(3) = 10.41^*$	0.015
> 6–12 mo	2 (7.4%)	5 (13.2%)		
13–48 mo	3 (11.1%)	8 (21.1%)		
> 48 Months	11 (40.7%)	3 (7.9%)		
Weight (kg), mean ( $\pm$ SD)	16.5 (19)	7.3 (6.5)	$t(28.9) = 2.40$	0.025
<b>Causes of cardiac arrest</b>				
Cardiac	18 (66.7%)	8 (21.1%)	$\chi^2(1) = 13.7^*$	<0.001
Respiratory	9 (33.3%)	30 (78.9%)		
<b>Diagnoses</b>				
CVS	2 (7.4%)	3(7.9%)	$\chi^2(3) = 7.60^*$	0.056
Respiratory	6 (22.2%)	17 (44.7%)		
Sepsis	10 (37%)	4 (10.5%)		
Others	9 (33.3%)	14 (36.8%)		
<b>Cardiac arrest rhythm</b>				
Sinus bradycardia	22 (81.5%)	36 (94.7%)	$\chi^2(2) = 2.93^*$	0.231
Shockable tachyarrhythmia	2 (7.4%)	1 (2.6%)		
Nonshockable dysrhythmias	3 (11.1%)	1 (2.6%)		
Pre-arrest intubation	26 (96.3%)	29 (76.3%)	$\chi^2(1) = 3.43^{**}$	0.064
Pre-arrest noninvasive ventilation	1 (3.7%)	1 (2.6%)	$\chi^2(1) < 0.001^{**}$	1 = NS
<b>Time of arrest</b>				
Working hours	10 (3%)	21 (55.3%)	$\chi^2(1) = 2.10$	0.147
On-call hours	17 (63%)	17 (44%)		
Duration of the CPR time (min)	31.2 (15)	9.2 (8.5)	$t(37.9) = 6.9$	<0.001
<b>Medications</b>				
Epinephrine IV bolus	25 (92.6%)	34 (89.5%)	$\chi^2(1) < 0.001^{**}$	NS
Lidocaine IV bolus	1 (3.7%)	2 (5.3%)	$\chi^2(1) < 0.001^{**}$	NS
Sodium bicarbonate IV bolus	14 (51.9%)	7 (18.4%)	$\chi^2(1) = 8.1$	0.005
Calcium chloride/gluconate IV bolus	8 (29.6%)	4 (10.5%)	$\chi^2(1) = 2.70$	0.103
Bolus amiodarone	1 (3.7%)	0	$\chi^2(1) = 0.030^{**}$	0.862
Atropine IV bolus	7 (25.9%)	10 (26.3%)	$\chi^2(1) < 0.001^{**}$	NS
Adenosine bolus	1 (3.7%)	1 (2.6%)	$\chi^2(1) < 0.001$	NS
Magnesium sulfate IV bolus	1 (3.7%)	0	$\chi^2(1) = 0.030$	0.863
Norepinephrine infusion	15 (55.6%)	5 (13.2%)	$\chi^2(1) = 13.3$	<0.000
Dopamine infusion	10 (37%)	8 (21.1%)	$\chi^2(1) = 2.01$	0.156
Vasopressin infusion	6 (22.2%)	0	$\chi^2(1) = 6.004^{**}$	0.009

Abbreviations: CVS, cardiovascular system; CPR, cardiopulmonary resuscitation; ROSC, return of spontaneous circulation; SD, standard deviation.

\*Likelihood ratio adjusted Chi squared test.

\*\*Chi squared test with Yates correction.





**Fig. 2** The association between CPR duration (minutes) and the generalized estimating equation model predicted survival rate (probability) over time. CPR, cardiopulmonary resuscitation.

pediatric patients with respiratory arrest (64.9%) than with cardiac-related arrest.<sup>25</sup> The better outcomes in patients with respiratory-related arrest may be due to a shorter CPR duration or a better tolerance for hypoxia compared with a cessation of perfusion. Moreover, better survival may result from airway maneuvers that enhance oxygenation by recruiting functional alveolar segments.<sup>25</sup>

The use of medication during CPR was an important aspect of our study. Our aim was to identify the most frequently used medications and their effects on CPR outcomes. Only vasopressin, sodium bicarbonate, and norepinephrine were significantly associated with inferior outcomes, similar to the findings of other studies.<sup>15,26</sup> This was partially due to the use of these medications as a last attempt at saving a patient, as well as the ambiguous indications for these medications during CPR. However, the

use of epinephrine and atropine boluses was reported in an earlier study to improve the survival rate of patients.<sup>9</sup>

Our results demonstrated a mean CPR duration of 9.2 minutes for patients who achieved ROSC, while the mean CPR duration for patients that did not survive was 31.2 minutes. A previous study showed that the first 15 minutes of CPR had the best outcomes, with a 41% probability of survival. Alternatively, prolonged CPR that extended beyond 35 minutes had only a 12% probability of survival, indicating that survival decreased by 2.1% per 1 minute of CPR.<sup>12</sup> Thus, CPR duration is inversely related to favorable outcomes. Our study showed similar findings, as the CPR duration was independently associated with survival to discharge.

The GEE model suggests a downward trend in ROSC after a CPR duration of 7 to 9 minutes, which may reflect prolonged oxygen deprivation and low perfusion during the arrest. Another explanation for the inverse relationship between CPR duration and survival is the waning effect of epinephrine after three to five doses, as some preclinical models have suggested.<sup>27</sup> Furthermore, in contrast to adult and pediatric out-of-hospital studies, the time until defibrillation, when a shockable rhythm was detected, did not correlate with outcomes in the setting of in-hospital cardiac arrest.<sup>28</sup> CPR performed in a perioperative setting shares similar CPR contexts with the PICU setting.<sup>29</sup>

The diagnosis of pediatric patients also had a significant impact on the outcome of CPR. In our research, favorable CPR outcomes were significantly associated with respiratory diagnoses, as 17 (73.9%) patients with a respiratory diagnosis on PICU admission achieved ROSC. Cardiac diagnoses are usually due to congenital diseases and are more chronic in nature than respiratory diagnoses, which are commonly associated with infectious causes. Furthermore, our sample size for cardiac diagnosis was small, as only five (7.69%) patients had a cardiac diagnosis. Other studies have demonstrated better survival outcomes after CPR for pediatric

**Table 4** Generalized estimating equation model explaining repeated survival rate from immediate post-CPR until discharge time for pediatric intensive care unit patients who underwent CPR ( $n = 195$ )

Parameter	B	Standard error	Adjusted odds ratio	95% CI		p-Value
				Lower	Upper	
(Intercept)	-2.635	0.8718	0.072	0.013	0.396	0.003
Female (sex)	1.161	0.6213	3.192	0.945	10.788	0.062
Age (mo)	0.004	0.0065	1.004	0.991	1.017	0.552
Cause of arrest	-0.697	0.5135	0.498	0.182	1.363	0.175
Bradycardia rhythm	1.618	0.6859	5.045	1.315	19.353	0.018
Shockable tachycardia	-0.756	0.8912	0.470	0.082	2.693	0.396
Time working arrest	0.228	0.5591	1.256	0.420	3.758	0.684
Duration of CPR	-0.091	0.0282	0.913 <sup>a</sup>	0.864	0.965	0.001
No NaHCO <sub>3</sub> bolus	-0.367	0.6318	0.693	0.201	2.390	0.561
No norepinephrine infusion	2.955	0.5162	19.211	6.986	52.833	<0.001

Abbreviations: CI, confidence interval; CPR, cardiopulmonary resuscitation; ROSC, return of spontaneous circulation; SD, standard deviation.  
<sup>a</sup>(0.913 times less accumulated survival =  $(1 - 0.913) \times 100 = 8.7\%$  less; as the CPR duration increased by 1 minute, the children's cumulative predicted survival declined by an average of 8.7%.

patients with cardiac diagnoses. The difference between our study and others may reflect the larger sample sizes and higher numbers of cardiac arrest cases with cardiac diagnoses in the other studies.<sup>9,30</sup>

A recent study compared CPR survival rates after pediatric cardiac arrest during nights and weekends to CPR survival during day shifts and weekdays in a large database that included 12,404 children who received CPR in 354 hospitals. The survival rate for pediatric patients undergoing CPR was lower during the night shifts than in the day shifts, although no clear difference was noted between weekends and weekdays.<sup>13</sup> Other recent studies have also demonstrated a marked drop-off in immediate ROSC and survival to discharge in patients who underwent CPR on weekends and during night shifts compared with weekdays and day shifts.<sup>31,32</sup> However, our research found no statistically significant differences between patients who underwent CPR during regular working hours and patients who underwent CPR during on-call hours. The differences in our study and others may be due to each hospital's staff management, which includes adequate staff numbers during both shifts, and the 24-hour in-house presence of a senior PICU team member. However, the decline in CPR quality during the night, which is attributed to fatigue, has been an area of concern. Although reports evaluating children's blood pressure during chest compression suggested a decline in CPR quality at night, these findings were not consistent across reports.<sup>33-35</sup>

We found that the presence of an endotracheal tube and mechanical ventilation pre-arrest were marginally correlated with a lower chance of survival, in line with other published papers.<sup>12,31,36</sup> Patients who develop cardiac arrest despite receiving respiratory assistance may have a worse prognosis due to their underlying disease severity. Moreover, the concept of reperfusion injury due to free oxygen radicals with the application of 1.0 FiO<sub>2</sub> deserves further study.<sup>37,38</sup>

The decreased survival rate post-ROSC needs to be integrated into parental counseling. During a child's resuscitation, the parents may perceive overwhelming chaos, so having a more informative prognosis during this stressful period could improve the parental expectations.<sup>39</sup> While emotional support was appreciated by parents who witnessed their child's resuscitation, the most important factor was that they received real-time clinical information from their health care providers. Better expectations could help the parents make more realistic decisions and could even change their attitudes toward end-of-life from life support preferences.<sup>40</sup>

This study reflects the importance of continuous assessment of the progress and impact of changes in CPR practices and outcomes. More accumulation and sharing of reports would aid in the development of better guidelines that are generalizable to all international communities.

## Limitations

Studies on pediatric resuscitation are difficult to perform and frequently include small numbers of patients.<sup>29</sup> They are

mostly retrospective and based on registries or administrative data, rather than being prospective and well-designed studies, so they are vulnerable to the challenges of missing data and potential bias.<sup>11</sup> However, the pediatric CPR is relatively a rare event and the accumulation of more reports, despite aforementioned limitation, is important for further progress in pediatrics CPR studies. The results of our study should be interpreted with caution due to the limitations of the study, including its retrospective and single-center design. The multivariate analysis in our study revealed interesting findings; however, the fairly large number of comparisons relative to the sample size needs to be interpreted with precaution. The assessment of CPR quality components was difficult to retrieve retrospectively and was beyond the study scope, but it warrants validation in future research. Our PICU adheres to the AHA Guidelines for CPR for pediatric advanced life support (PALS), and it undergoes ongoing revisions to target key questions related to pediatric resuscitation. The PALS Guidelines, which were revised by the AHA in 2015, were published in the "American Heart Association Guidelines Update for Cardiopulmonary Resuscitation and Emergency Cardiovascular Care." These updates are usually applied in real-life settings within a year of their announcement and may affect CPR studies that overlap with these updates.<sup>1</sup> We also believe that additional prospective data regarding the neurological outcomes of surviving patients could have added more insights to the outcome. However, the neurological outcome was not considered in the study scope. Nevertheless, this study considered relevant and meaningful primary outcomes, with potential expansion to include neurological outcomes in future updates. Although the duration of a CPR event could be difficult to validate in the context of an emergency event, the documentation of CPR in a specifically designed form was quite helpful for tracking, in combination with monitoring the timeline print attached to the form.

## Conclusion

In the PICU setting, better CPR outcomes were associated with younger age, a respiratory cause of arrest, a bradycardia rhythm, and a shorter CPR duration. The duration of CPR remains one of the crucial factors for CPR outcomes and needs to be considered in parallel with the guidelines emphasizing CPR quality. The decreased survival rate post-ROSC needs to be carefully considered during parental counseling, while better anticipation and prevention of CPR remain ongoing challenges. A multicenter national registry of CPR outcomes would further improve and widen the research scope.

**Conflict of Interest**  
None declared.

## Acknowledgments

The authors thank the Deanship of Scientific Research and Researchers Support and Services Unit at King Saud University for their technical support.

## References

- 1 Girotra S, Spertus JA, Li Y, Berg RA, Nadkarni VM, Chan PS American Heart Association Get With the Guidelines-Resuscitation Investigators. Survival trends in pediatric in-hospital cardiac arrests: an analysis from get with the guidelines-resuscitation. *Circ Cardiovasc Qual Outcomes* 2013;6(01):42-49
- 2 Alten JA, Klugman D, Raymond TT, et al. Epidemiology and outcomes of cardiac arrest in pediatric cardiac ICUs. *Pediatr Crit Care Med* 2017;18(10):935-943
- 3 Berg RA, Sutton RM, Holubkov R, et al; Eunice Kennedy Shriver National Institute of Child Health and Human Development Collaborative Pediatric Critical Care Research Network and for the American Heart Association's Get With the Guidelines-Resuscitation (formerly the National Registry of Cardiopulmonary Resuscitation) Investigators. Ratio of PICU versus ward cardiopulmonary resuscitation events is increasing. *Crit Care Med* 2013;41(10):2292-2297
- 4 Scholz SS, Borgstedt R, Menzel LC, Rehberg S, Jansen G. Evolution and current state of global research on paediatric resuscitation: a systematic scientometric analysis. *Scand J Trauma Resusc Emerg Med* 2020;28(01):90
- 5 de Caen AR, Berg MD, Chameides L, et al. Part 12: pediatric advanced life support: 2015 American Heart Association Guidelines Update for Cardiopulmonary Resuscitation and Emergency Cardiovascular Care (reprint). *Pediatrics* 2015;136(Suppl 2):S176-S195 F
- 6 Morgan RW, Landis WP, Marquez A, et al. Hemodynamic effects of chest compression interruptions during pediatric in-hospital cardiopulmonary resuscitation. *Resuscitation* 2019;139:1-8
- 7 Topjian AA, Nadkarni VM, Berg RA. Cardiopulmonary resuscitation in children. *Curr Opin Crit Care* 2009;15(03):203-208
- 8 Nasser BA, Idris J, Mesned AR, Mohamad T, Kabbani MS, Alakfash A. Predictors of cardio pulmonary resuscitation outcome in postoperative cardiac children. *J Saudi Heart Assoc* 2016;28(04):244-248
- 9 Kaki AM, Alghalayini KW, Alama MN, et al. An audit of in-hospital cardiopulmonary resuscitation in a teaching hospital in Saudi Arabia: A retrospective study. *Saudi J Anaesth* 2017;11(04):415-420
- 10 Young KD, Seidel JS. Pediatric cardiopulmonary resuscitation: a collective review. *Ann Emerg Med* 1999;33(02):195-205
- 11 Berg RA, Nadkarni VM, Clark AE, et al; Eunice Kennedy Shriver National Institute of Child Health and Human Development Collaborative Pediatric Critical Care Research Network. Incidence and outcomes of cardiopulmonary resuscitation in PICUs. *Crit Care Med* 2016;44(04):798-808
- 12 Matos RI, Watson RS, Nadkarni VM, et al; American Heart Association's Get With The Guidelines-Resuscitation (Formerly the National Registry of Cardiopulmonary Resuscitation) Investigators. Duration of cardiopulmonary resuscitation and illness category impact survival and neurologic outcomes for in-hospital pediatric cardiac arrests. *Circulation* 2013;127(04):442-451
- 13 Bhanji F, Topjian AA, Nadkarni VM, et al; American Heart Association's Get With the Guidelines-Resuscitation Investigators. Survival rates following pediatric in-hospital cardiac arrests during nights and weekends. *JAMA Pediatr* 2017;171(01):39-45
- 14 Parra DA, Totapally BR, Zahn E, et al. Outcome of cardiopulmonary resuscitation in a pediatric cardiac intensive care unit. *Crit Care Med* 2000;28(09):3296-3300
- 15 Wu E-T, Li M-J, Huang S-C, et al. Survey of outcome of CPR in pediatric in-hospital cardiac arrest in a medical center in Taiwan. *Resuscitation* 2009;80(04):443-448
- 16 Genbrugge C, Eertmans W, Salcido DD. Monitor the quality of cardiopulmonary resuscitation in 2020. *Curr Opin Crit Care* 2020;26(03):219-227
- 17 Hunt EA, Jeffers J, McNamara L, et al. Improved cardiopulmonary resuscitation performance with CODE ACES2: a resuscitation quality bundle. *J Am Heart Assoc* 2018;7(24):e009860
- 18 Niles DE, Duval-Arnould J, Skellett S, et al; pediatric Resuscitation Quality (pediRES-Q) Collaborative Investigators. Characterization of pediatric in-hospital cardiopulmonary resuscitation quality metrics across an international resuscitation collaborative. *Pediatr Crit Care Med* 2018;19(05):421-432
- 19 Topjian AA, Raymond TT, Atkins D, et al; Pediatric Basic and Advanced Life Support Collaborators. Part 4: Pediatric Basic and Advanced Life Support: 2020 American Heart Association Guidelines for Cardiopulmonary Resuscitation and Emergency Cardiovascular Care. *Circulation* 2020;142(16\_suppl\_2):S469-S523
- 20 Martinez PA, Totapally BR. The epidemiology and outcomes of pediatric in-hospital cardiopulmonary arrest in the United States during 1997 to 2012. *Resuscitation* 2016;105:177-181
- 21 Mustafa K, Buckley H, Feltbower R, Kumar R, Scholefield BR. Epidemiology of cardiopulmonary resuscitation in critically ill children admitted to pediatric intensive care units across England: a multicenter retrospective cohort study. *J Am Heart Assoc* 2021;10(09):e018177
- 22 Tham LP, Wah W, Phillips R, et al. Epidemiology and outcome of paediatric out-of-hospital cardiac arrests: A paediatric sub-study of the Pan-Asian resuscitation outcomes study (PAROS). *Resuscitation* 2018;125:111-117
- 23 Tijssen JA, Prince DK, Morrison LJ, et al; Resuscitation Outcomes Consortium. Time on the scene and interventions are associated with improved survival in pediatric out-of-hospital cardiac arrest. *Resuscitation* 2015;94:1-7
- 24 Rajan S, Wissenberg M, Folke F, et al. Out-of-hospital cardiac arrests in children and adolescents: incidences, outcomes, and household socioeconomic status. *Resuscitation* 2015;88:12-19
- 25 Berens RJ, Cassidy LD, Matchey J, et al. Probability of survival based on etiology of cardiopulmonary arrest in pediatric patients. *Paediatr Anaesth* 2011;21(08):834-840
- 26 Andersen LW, Kurth T, Chase M, et al; American Heart Association's Get With The Guidelines-Resuscitation Investigators. Early administration of epinephrine (adrenaline) in patients with cardiac arrest with initial shockable rhythm in hospital: propensity score matched analysis. *BMJ* 2016;353:i1577-i1577
- 27 Mavroudis CD, Ko TS, Morgan RW, et al. Epinephrine's effects on cerebrovascular and systemic hemodynamics during cardiopulmonary resuscitation. *Crit Care* 2020;24(01):583
- 28 Hunt EA, Duval-Arnould JM, Bembea MM, et al; American Heart Association's Get With The Guidelines-Resuscitation Investigators. Association between time to defibrillation and survival in pediatric in-hospital cardiac arrest with a first documented shockable rhythm. *JAMA Netw Open* 2018;1(05):e182643-e182643
- 29 Jansen G, Borgstedt R, Irmischer L, et al. Incidence, mortality, and characteristics of 18 pediatric perioperative cardiac arrests: an observational trial from 22,650 pediatric anesthetics in a German tertiary care hospital. *Anesthes Analges* 2021;10:1213
- 30 Appiah J, Salie S, Argent A, et al. Characteristics, course and outcomes of children admitted to a paediatric intensive care unit after cardiac arrest. *South Afr J Crit Care* 2018;34:58-64
- 31 Assar S, Husseinzadeh M, Nikravesh AH, Davoodzadeh H. The success rate of pediatric in-hospital cardiopulmonary resuscitation in Ahvaz training hospitals. *Scientifica (Cairo)* 2016;2016:9648140-9648140
- 32 Esangbedo I, Yu P, Raymond T, et al; Pediatric Resuscitation Quality (pediRES-Q) Collaborative Investigators. Pediatric in-hospital CPR quality at night and on weekends. *Resuscitation* 2020;146:56-63
- 33 Berg RA, Sutton RM, Reeder RW, et al; Eunice Kennedy Shriver National Institute of Child Health and Human Development Collaborative Pediatric Critical Care Research Network (CPCCRN) PICqCPR (Pediatric Intensive Care Quality of Cardio-Pulmonary Resuscitation) Investigators. Association between diastolic blood pressure during pediatric in-hospital cardiopulmonary resuscitation and survival. *Circulation* 2018;137(17):1784-1795



- 34 Wolfe HA, Morgan RW, Sutton RM, et al; Eunice Kennedy Shriver National Institute of Child Health Human Development Collaborative Pediatric Critical Care Research Network Pediatric Intensive Care Quality of Cardiopulmonary Resuscitation (PICqCPR) investigators. Association between time of day and CPR quality as measured by CPR hemodynamics during pediatric in-hospital CPR. *Resuscitation* 2020;153:209–216
- 35 Wolfe HA, Sutton RM, Reeder RW, et al; Eunice Kennedy Shriver National Institute of Child Health Human Development Collaborative Pediatric Critical Care Research Network Pediatric Intensive Care Quality of Cardiopulmonary Resuscitation Investigators. Functional outcomes among survivors of pediatric in-hospital cardiac arrest are associated with baseline neurologic and functional status, but not with diastolic blood pressure during CPR. *Resuscitation* 2019;143:57–65
- 36 Lasa JJ, Rogers RS, Localio R, et al. Extracorporeal cardiopulmonary resuscitation (e-CPR) during pediatric in-hospital cardiopulmonary arrest is associated with improved survival to discharge: a report from the American Heart Association's Get With The Guidelines-Resuscitation (GWTG-R) Regi. *Circulation* 2016;133(02):165–176
- 37 Marquez AM, Morgan RW, Ko T, et al. Oxygen exposure during cardiopulmonary resuscitation is associated with cerebral oxidative injury in a randomized, blinded, controlled, preclinical trial. *J Am Heart Assoc* 2020;9(09):e015032
- 38 Nelskylä A, Nurmi J, Jousi M, et al. The effect of 50% compared to 100% inspired oxygen fraction on brain oxygenation and post cardiac arrest mitochondrial function in experimental cardiac arrest. *Resuscitation* 2017;116:1–7
- 39 Stewart SA. Parents' experience during a child's resuscitation: getting through it. *J Pediatr Nurs* 2019;47:58–67
- 40 Temsah M-H. Ethical considerations about changing parental attitude towards end-of-life care in twins with lethal disease. *Sudan J Paediatr* 2018;18(01):76–82