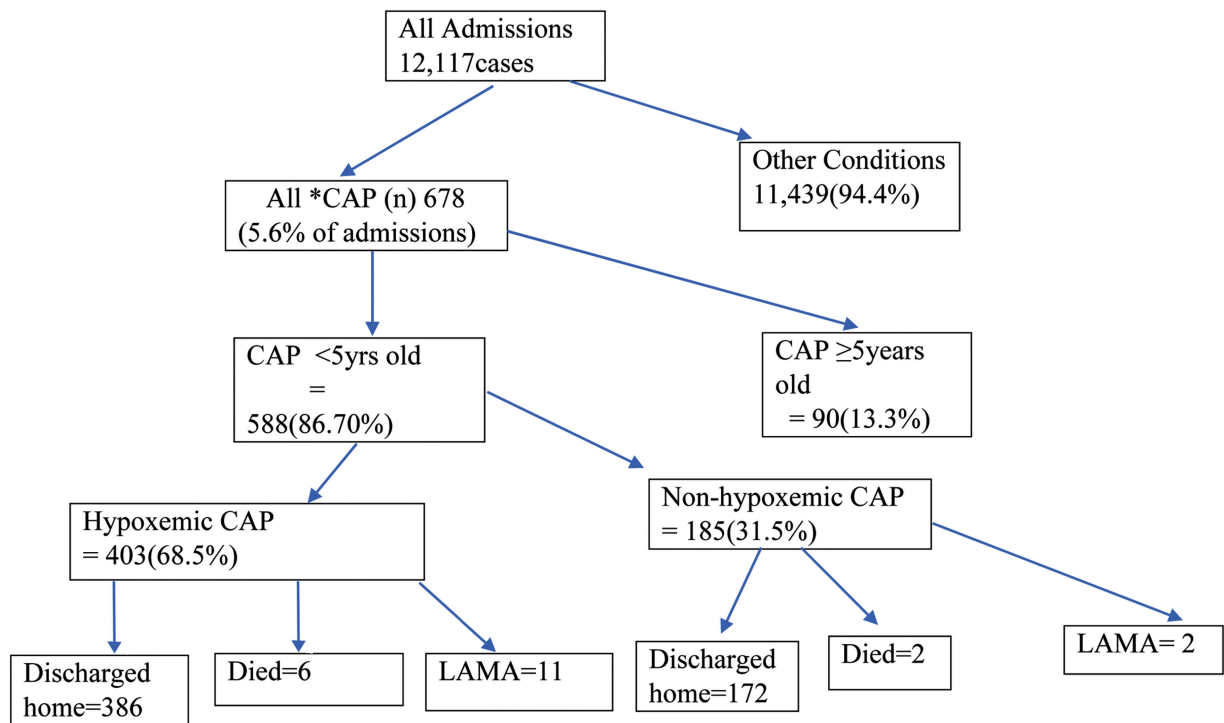


Supplementary Table S1 Pediatric association of Nigeria antibiotics protocol for CAP⁹

Categories of children	Outpatient		Inpatient	
	First line	Alternative	First line	Alternative
< 2 mo	Admit and treat like neonatal sepsis			
≥ 2 mo	High dose Oral amoxicillin (90mg/kg/day in 2 divided doses) for at least 5 day	Oral amoxicillin-clavulanic acid (amoxicillin component 90 mg/kg/d in two divided doses) OR oral cefpodoxime (10 mg/kg/d in two divided doses) OR oral cefuroxime (20–30 mg/kg/day in two divided doses) for at least 5 d	IV amoxicillin (150 mg/kg/d in three divided doses) AND IV/IM Gentamicin (5–7.5 mg/kg once daily) for at least 5 d	IV ceftriaxone (50–100 mg/kg/d every 12–24 h), OR IV cefotaxime (100–200 mg/kg/d in four divided doses), OR IV/IM Gentamicin (5–7.5 mg/kg once daily) AND IV cloxacillin (100–200 mg/kg in four divided doses) OR IV cefuroxime (150 mg/kg/d in three divided doses) AND IV/IM Gentamicin (5–7.5 mg/kg once daily) for at least 5 d.
HIV-infected children	High dose Oral amoxicillin (90mg/kg/day in 2 divided doses) for 10 days	Oral amoxicillin-clavulanic acid (amoxicillin component 90 mg/kg/day in two divided doses) OR oral cefpodoxime (10 mg/kg/d in 2 divided doses) OR oral cefuroxime (20–30 mg/kg/d in two divided doses) for at least 10 days	IV amoxicillin (150 mg/kg/d in three divided doses) AND IV/IM Gentamicin (5–7.5 mg/kg once daily) PLUS high dose co-trimoxazole (20 mg/kg/d of trimethoprim) for at least 10 days	IV ceftriaxone (50–100 mg/kg/d every 12–24 h), OR IV cefotaxime (100–200 mg/kg/d in four divided doses) OR IV cefuroxime (150mg/kg/day in 3 divided doses) AND IV/IM Gentamicin (5–7.5 mg/kg once daily) PLUS high-dose co-trimoxazole (20 mg/kg/d of trimethoprim in four divided doses) for at least 10 d
Children with sickle cell disease	High dose Oral amoxicillin (90 mg/kg/d in two divided doses) for at least 5 d	Oral amoxicillin-clavulanic acid (amoxicillin component 90 mg/kg/d in two divided doses) OR oral cefpodoxime (10 mg/kg/d in two divided doses) OR oral cefuroxime (20–30 mg/kg/d in two divided doses) for at least 5 d	IV amoxicillin (150 mg/kg/d in three divided doses) AND IV/IM Gentamicin (5–7.5 mg/kg once daily) PLUS Oral erythromycin (60–100 mg/kg/d in four divided doses) for at least 5 d	IV ceftriaxone (50–100 mg/kg/d every 12–24 h), OR IV cefotaxime (100–200 mg/kg/d in four divided doses) OR IV cefuroxime (150 mg/kg/d in three divided doses) AND IV/IM Gentamicin (5–7.5 mg/kg once daily) for at least 5 d PLUS oral azithromycin (10 mg/kg) daily dose for 3 d



Supplementary Fig. S1 Flow Chart For Childhood Community-Acquired Pneumonia In Ibadan. CAP, community acquired pneumonia; LAMA, left against medical advice.

Supplementary Table S2 Blood culture isolates

Blood culture	Frequency	%
Positive	37	8.14
Sterile	417	70.20
Not done	134	22.70
Isolates $n = 37$		
<i>Staphylococcus aureus</i> (SA)	21	56.74
Methicillin Resistant SA	2	5.41
<i>Klebsiella pneumoniae</i>	7	18.94
<i>Pseudomonas aeruginosa</i>	2	5.41
<i>Acinetobacter baumannii</i>	1	2.70
Salmonella species	1	2.70
Lactase fermenting	1	2.70
Enterobacteriaceae		
<i>Streptococcus pneumoniae</i>	1	2.70
<i>Listeria Monocytogenes</i>	1	2.70

Supplementary Table S3 Unadjusted and adjusted logistic regression of the factors associated with treatment outcome among 588 study participants

Variables	Outcome Death		uOR (95% CI)	aOR (95% CI)
	No (%)	Yes (%)		
Age group				
2–11 mo	380 (65.52)	3 (37.50)	0.3 (0.1–1.3)	
12–59 mo	200 (34.48)	5 (62.50)	1.0	
Gender				
Male	348 (60.00)	7 (87.50)	1.0	
Female	232 (40.00)	1 (12.50)	0.2 (0.03–1.8)	
Breastfeeding status				
Exclusive breastfed	353 (63.15)	5 (62.50)	1.0	
Not exclusive breastfed	206 (36.85)	3 (37.50)	1.0 (0.2–4.3)	
Immunization history				
Fully immunized for age	507 (87.41)	6 (75.00)	1.0	
Not fully immunized for age	73 (12.59)	2 (25.00)	2.3 (0.5–11.7)	
Immunization detail				
Hib but not PCV	220 (37.93)	4 (50.00)	2.7 (0.5–15.0)	
Hib and PCV	299 (51.55)	2 (25.00)	1.0	
None of Hib and PCV	61 (10.52)	2 (25.00)	4.9 (0.7–35.5)	
Birth weight				
Low birth weight(<2,500 g)	56 (9.66)	2 (25.00)	3.0 (0.6–15.0)	
Normal birth weight (2,500–3,999 g)	498 (85.86)	6 (75.00)	1.0	
Macrosomia (≥4,000 g)	26 (4.48)	0 (0.00)		
Nutritional status based on weight				
Normal	384 (66.21)	6 (75.00)	1.0	
Underweight	159 (27.41)	1 (12.50)	0.4 (0.05–3.4)	
Severely malnourished	37 (6.38)	1 (12.50)	1.7 (0.2–14.8)	
Antibiotic use before presentation				
No	349 (60.17)	6 (75.00)	1.0	
Yes	231 (39.83)	2 (25.00)	0.5 (0.1–2.5)	
First-line antibiotic(s) used				
Amoxicillin and gentamicin	340 (58.82)	8 (100.00)		
Cefuroxime and gentamicin	155 (26.82)	0 (0.0)		
Unasyn and amikacin	44 (7.61)	0 (0.0)		
Ceftriaxone	36 (6.23)	0 (0.0)		
Others	3 (0.52)	0 (0.0)		
Antibiotic change				
No	452 (77.93)	5 (62.50)	1.0	
Yes	128 (22.07)	3 (37.50)	2.1 (0.5–9.0)	
Comorbidity and complications				
None	143 (38.96)	1 (25.00)	0.4 (0.03–6.8)	
Malaria	13 (3.54)	1 (25.00)	4.6 (0.3–78.7)	
Heart disease	55 (14.99)	1 (25.00)	1.1 (0.1–17.9)	
Sickle cell disease	9 (2.45)	0 (0.00)		

Supplementary Table S3 (Continued)

Variables	Outcome Death		uOR (95% CI)	aOR (95% CI)
	No (%)	Yes (%)		
Sepsis	60 (16.35)	1 (25.00)	1.0	
Others	87 (23.71)	0 (0.00)		
Hypoxemia				
Yes	397 (69.53)	6 (75.00)	1.3 (0.3–6.6)	
No	183 (30.47)	2 (25.00)	1.0	

Abbreviations: aOR, adjusted odd ratio; Hib, *Haemophilus influenzae* type b; uOR, Unadjusted odds ratio; PCV, pneumococcal conjugate vaccine.